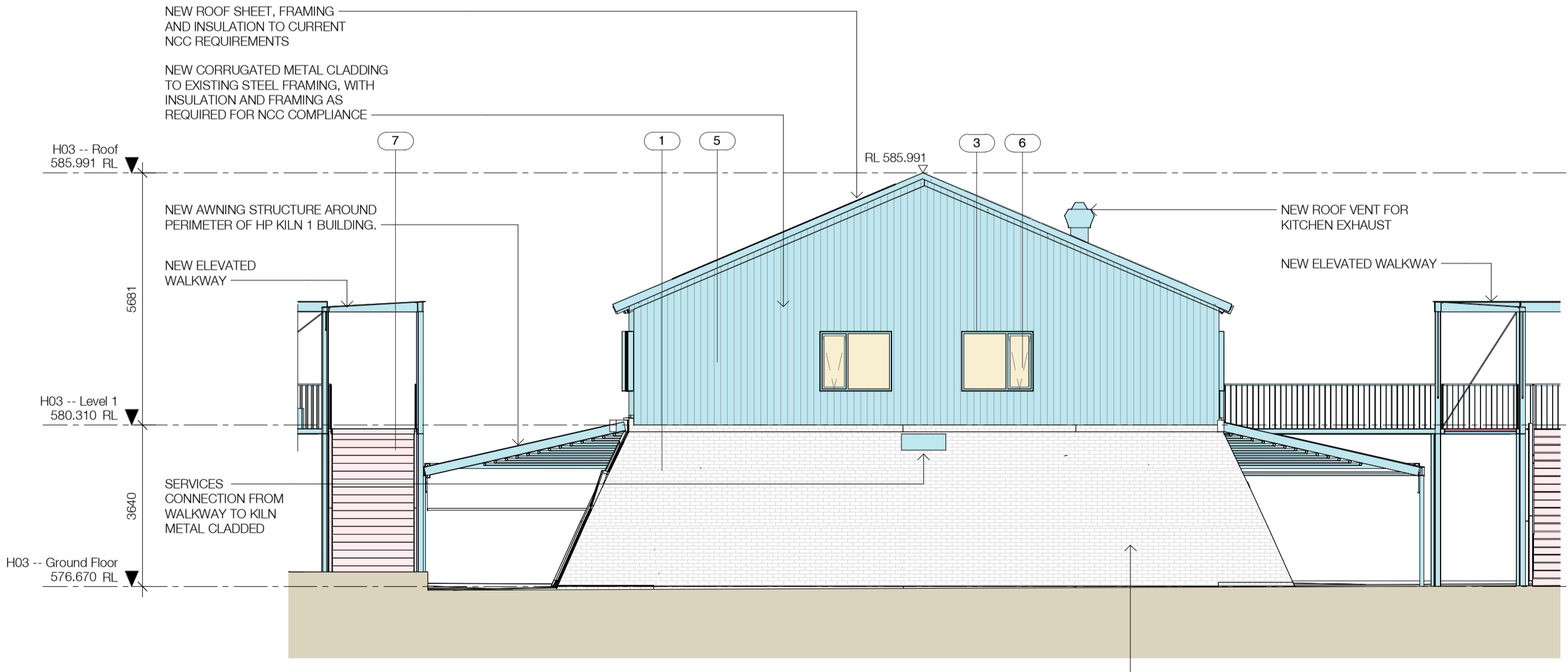


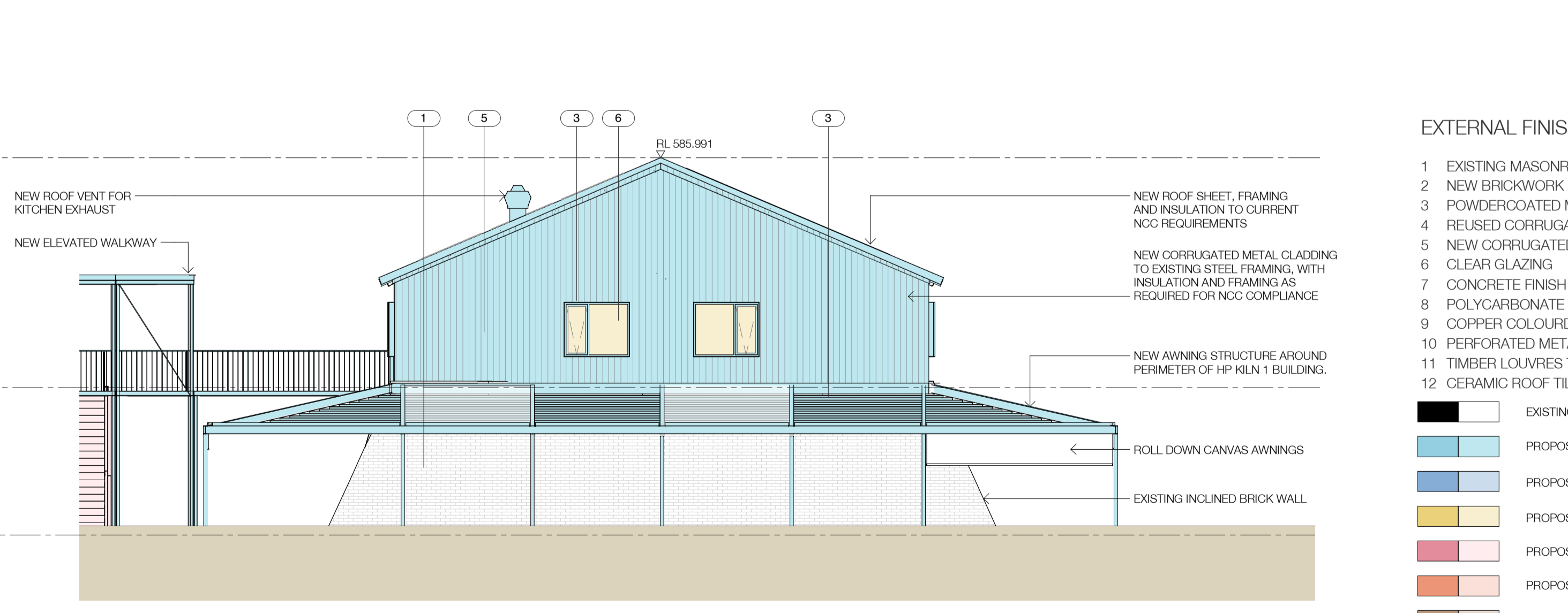
1 DA-H03 - Elevation North
1: 100@A1



2 DA-H03 - Elevation South
1: 100@A1



3 DA-H03 - Elevation East
1: 100@A1



4 DA-H03 - Elevation West
1: 100@A1

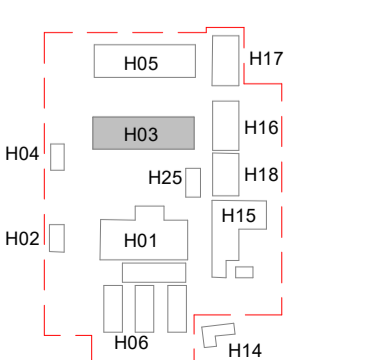
- EXTERNAL FINISHES**
- 1 EXISTING MASONRY
 - 2 NEW BRICKWORK | RED COLOUR
 - 3 POWDERCOATED METAL
 - 4 REUSED CORRUGATED METAL SHEETING
 - 5 NEW CORRUGATED METAL SHEETING
 - 6 CLEAR GLAZING
 - 7 CONCRETE FINISH
 - 8 POLYCARBONATE PANEL
 - 9 COPPER COLOURD METAL SHEETING
 - 10 PERFORATED METAL
 - 11 TIMBER LOUVRES TO MATCH EXISTING
 - 12 CERAMIC ROOF TILES (EXISTING REUSED)
- EXISTING
 - PROPOSED - METAL
 - PROPOSED - REUSED CORRUGATED
 - PROPOSED - GLAZED
 - PROPOSED - CONCRETE
 - PROPOSED - MASONRY
 - PROPOSED - TIMBER
 - PROPOSED - LIGHTWEIGHT

FOR DEVELOPMENT APPLICATION

Nominated Architects: Adam Haddow-7188 | John Pradel-7004

Rev	Date	Revision	By	Chk.
1	15.10.2021	For Information	DM	EW
2	08.07.2022	Draft DA Issue	DM	EW
3	15.08.2022	Issue for DA	DM	EW
4	19.07.2023	For Approval	DM	EW

Client
DOMA



Project
BRICKWORKS HERITAGE CORE - Yarralumla, ACT 2600

Building
H03 - HARDY PATENT KILN 1

Drawing Name
Elevations North, East, South, West

Date	Scale	Sheet Size	SJB Architects
19.07.2023	1 : 100	@ A1	
Drawn	Chk.		
DM	EW		
Job No.	Drawing No.	Revision	
5479	DA-H03-1401 / 4		

Level 2
490 Crown Street
Surry Hills NSW
2010 Australia
T 61 2 9380 9911
F 61 2 9380 9922
www.sjb.com.au