

File Name: P:\2019\191148_Yarralumla-Brickworks\04_CAD\4_2_Drawings\CIV\EDP\191148-drg-civ-28-02.dwg



Status **NOT FOR CONSTRUCTION**

DO NOT SCALE OFF DRAWINGS. VERIFY ALL DIMENSIONS ON SITE PRIOR TO WORK.
 COPYRIGHT: The contents and information contained in this document are copyright of Sellick Consultants. Use or copy of this document in whole or part without written permission constitutes an infringement of copyright.

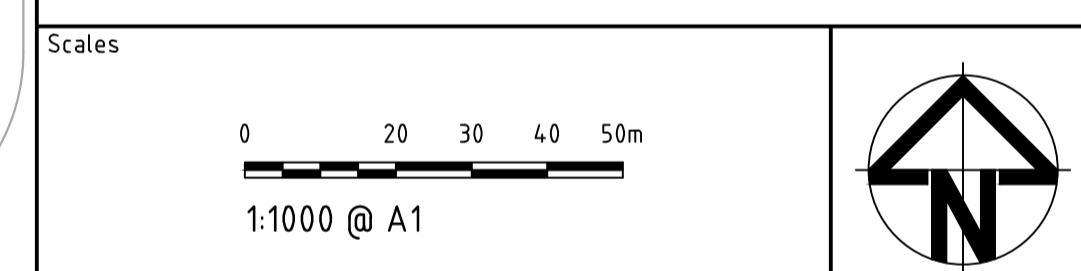
Rev	Description	Date	Drawn By
A	EDP SUBMISSION	31.07.2023	MN

LEGEND

	HOLDING LEASE BOUNDARY
	PROPOSED BLOCK BOUNDARY
	EXISTING TREE TO BE REMOVED
	EXISTING TREE TO BE RETAINED
	PROPOSED CONTOUR
	EXISTING CONTOUR
	SITE OFFICE / ABLUTIONS
	SEDIMENT CONTROL FENCE
	SEDIMENT CONTROL POND
	CUT OFF DRAIN
	STOCKPILE LOCATION OF EXCAVATED NATURAL MATERIAL. SEED AND STABILISE AS REQUIRED
	ACM BURIAL CELL.
	FILL MATERIAL CONTAINING ASBESTOS AS SHEET FRAGMENTS (APPROX. VOLUME= 1920m ² x 2m av. depth= 384.0m ³)

EARTHWORKS AND SITE GRADING TO CONFORM TO THE REQUIREMENTS OF THE FOLLOWING ACT GOVERNMENT STANDARDS AND SPECIFICATIONS AND THEIR REFERENCE STANDARDS.

- M1S02
- MITS00C
- MITS02A, MITS02B, MITS02C



Original Size	A1	Drawn By	DA	Drafting Check	DCA
Date Plotted	31-Jul-23	Designed By	AE	Design Check	
Coordinate System	STROMLO GRID	Approved	BC	Approved Date	
Height Datum	AHD	Approved Signature			

Project Name and Location

THE CANBERRA BRICKWORKS
 BLOCKS 1,7 & 20 SECTION 102

Drawing Title

EDP - ENVIRONMENTAL CONTAMINATED MATERIAL MANAGEMENT PLAN

Project Number	Type	Discipline	Drg No.	Sub-No.	Rev
191148	DRG	CIV	28	02	A