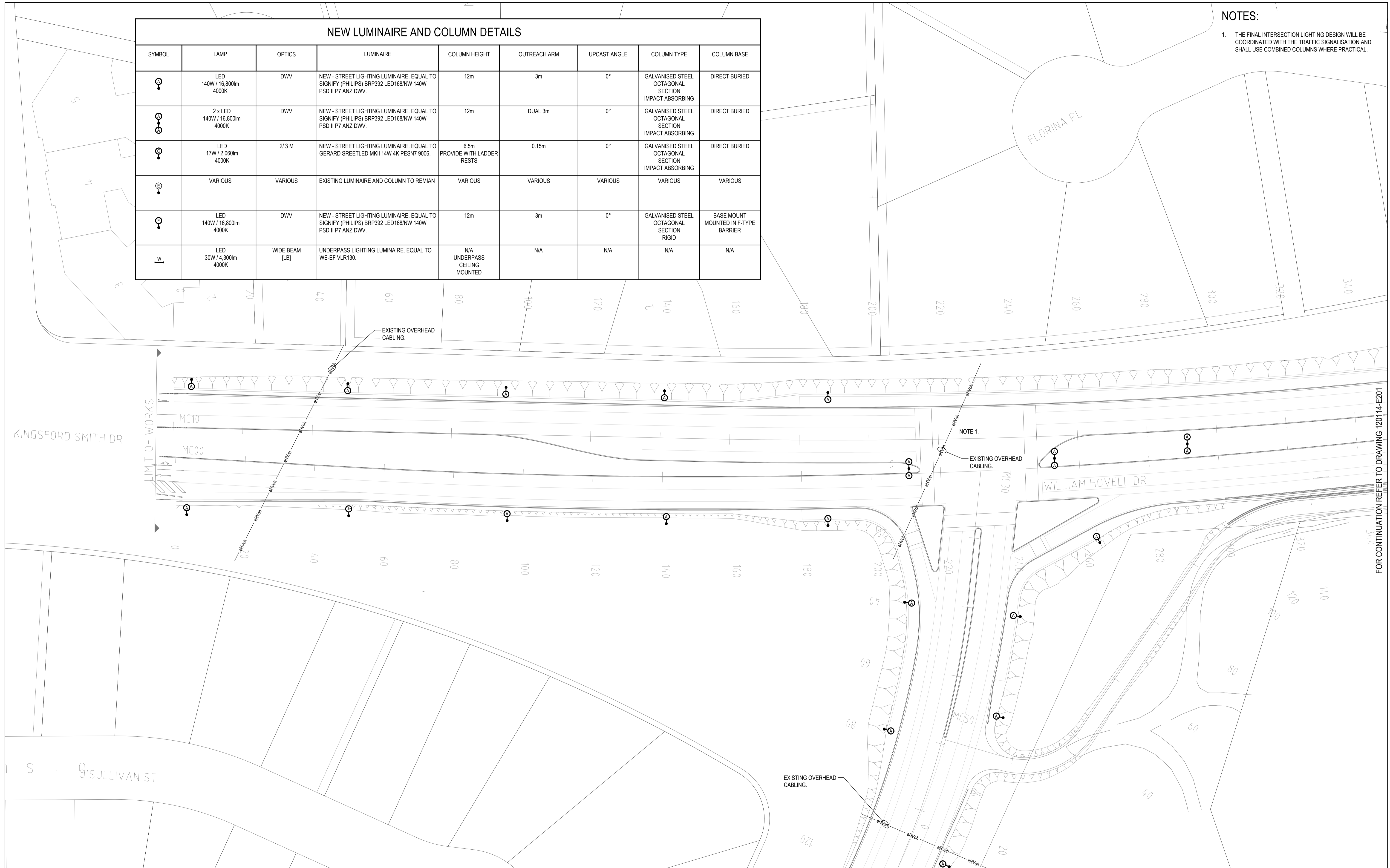


NOTES:

- THE FINAL INTERSECTION LIGHTING DESIGN WILL BE COORDINATED WITH THE TRAFFIC SIGNALISATION AND SHALL USE COMBINED COLUMNS WHERE PRACTICAL.

NEW LUMINAIRE AND COLUMN DETAILS								
SYMBOL	LAMP	OPTICS	LUMINAIRE	COLUMN HEIGHT	OUTREACH ARM	UPCAST ANGLE	COLUMN TYPE	COLUMN BASE
	LED 140W / 16,800lm 4000K	DWV	NEW - STREET LIGHTING LUMINAIRE. EQUAL TO SIGNIFY (PHILIPS) BRP392 LED168/NW 140W PSD II P7 ANZ DWV.	12m	3m	0°	GALVANISED STEEL OCTAGONAL SECTION IMPACT ABSORBING	DIRECT BURIED
	2 x LED 140W / 16,800lm 4000K	DWV	NEW - STREET LIGHTING LUMINAIRE. EQUAL TO SIGNIFY (PHILIPS) BRP392 LED168/NW 140W PSD II P7 ANZ DWV.	12m	DUAL 3m	0°	GALVANISED STEEL OCTAGONAL SECTION IMPACT ABSORBING	DIRECT BURIED
	LED 17W / 2,080lm 4000K	2/3 M	NEW - STREET LIGHTING LUMINAIRE. EQUAL TO GERARD SREETLED MKII 14W 4K PESN7 9006.	6.5m PROVIDE WITH LADDER RESTS	0.15m	0°	GALVANISED STEEL OCTAGONAL SECTION IMPACT ABSORBING	DIRECT BURIED
	VARIOUS	VARIOUS	EXISTING LUMINAIRE AND COLUMN TO REMIAN	VARIOUS	VARIOUS	VARIOUS	VARIOUS	VARIOUS
	LED 140W / 16,800lm 4000K	DWV	NEW - STREET LIGHTING LUMINAIRE. EQUAL TO SIGNIFY (PHILIPS) BRP392 LED168/NW 140W PSD II P7 ANZ DWV.	12m	3m	0°	GALVANISED STEEL OCTAGONAL SECTION RIGID	BASE MOUNT MOUNTED IN F-TYPE BARRIER
	LED 30W / 4,300lm 4000K	WIDE BEAM [LB]	UNDERPASS LIGHTING LUMINAIRE. EQUAL TO WE-EF VLR130.	N/A UNDERPASS CEILING MOUNTED	N/A	N/A	N/A	N/A



Rev.	Date	Details and Status	By	Rev.	Date	Details and Status	By
04	13.11.20	ISSUE FOR FINAL PSP	NF				
03	13.10.20	REISSUE FOR PSP (BACKGROUND UPDATE)	NF				
02	09.10.20	REISSUE FOR PSP (BACKGROUND UPDATE)	DO				
01	19.06.20	ISSUE FOR PSP	NF				

SCALEBAR FOR 1:500

NOT FOR TENDER

ACOR Rudds Consultants Pty Ltd
Unit 1, 5 Boddalla Place
Fyshwick ACT 2609
T +61 2 6240 2900

Designed: A. Bencke
Reviewed / Date: M. Vidler 13.11.20
Approved / Date: A. Bencke 13.11.20
Drawn: J. Thilakasi
AutoCAD Drawing
120114-E200 [04]

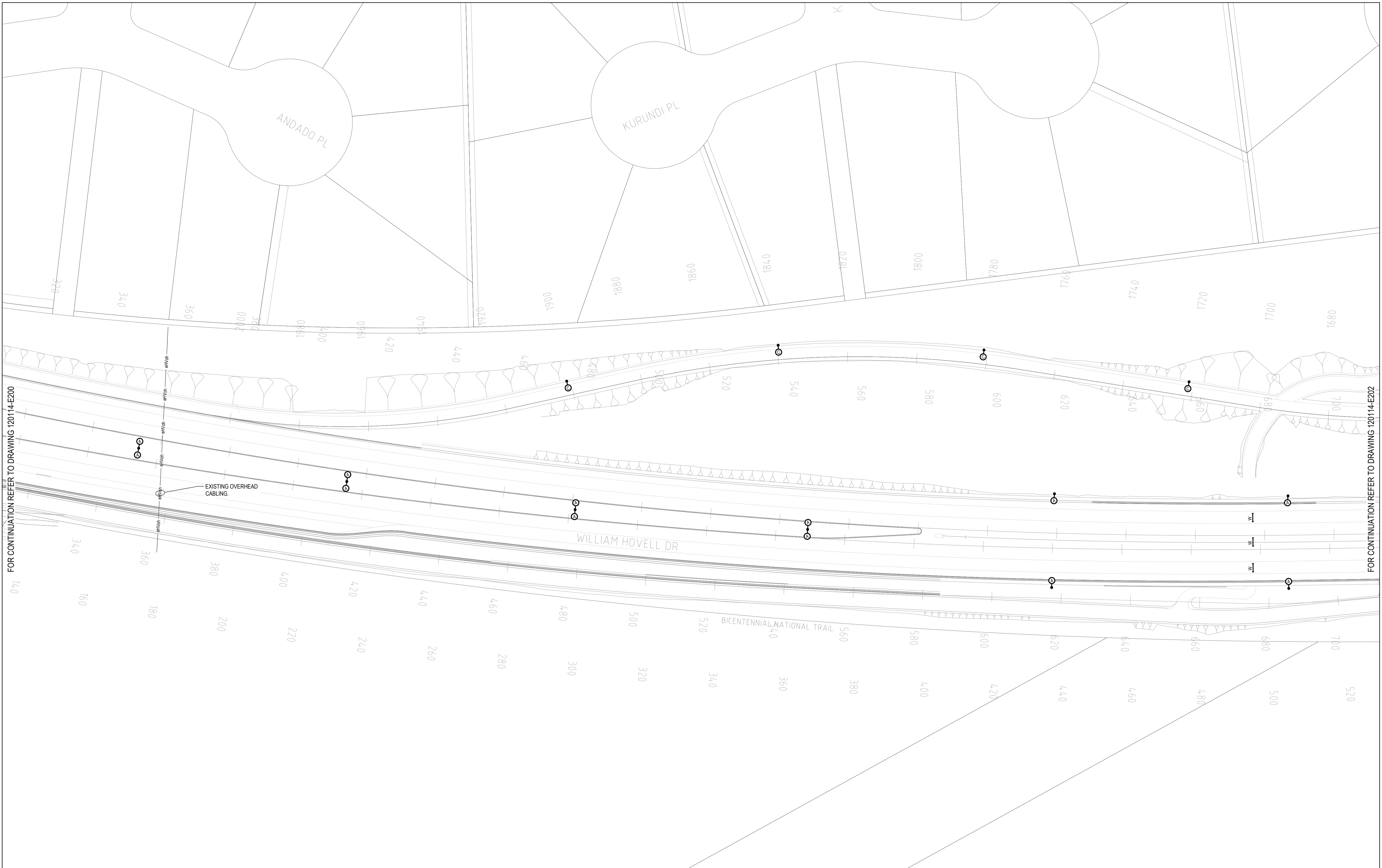
Client: SMEC AUSTRALIA PTY LTD

Project: WILLIAM HOVELL DRIVE DUPLICATION

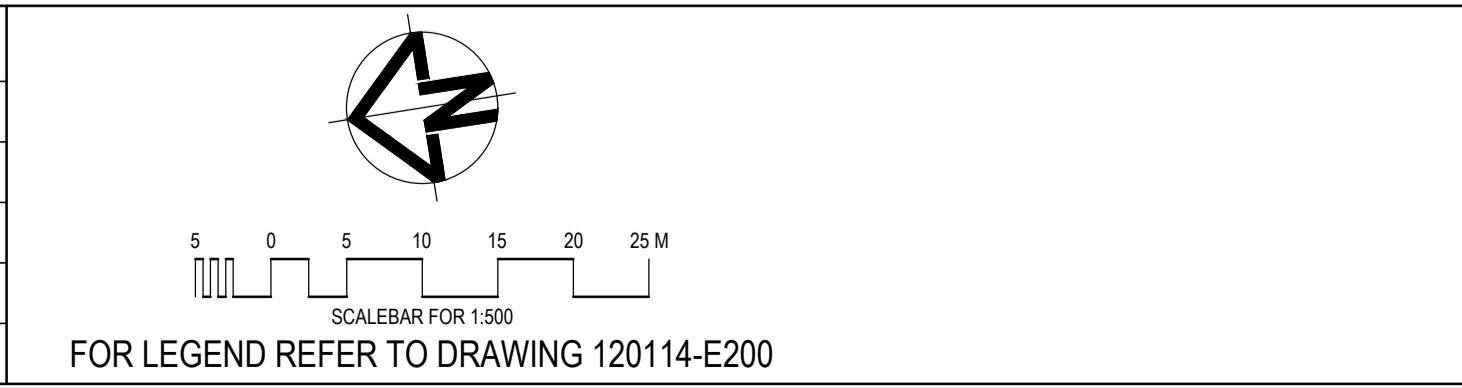
Drawing Title: NEW - STREET LIGHTING SHEET 1 ELECTRICAL SERVICES

Scale: 1:500
Sht Size: A1
Drawing No: 120114-E200
Rev: 04

FOR CONTINUATION REFER TO DRAWING 120114-E201

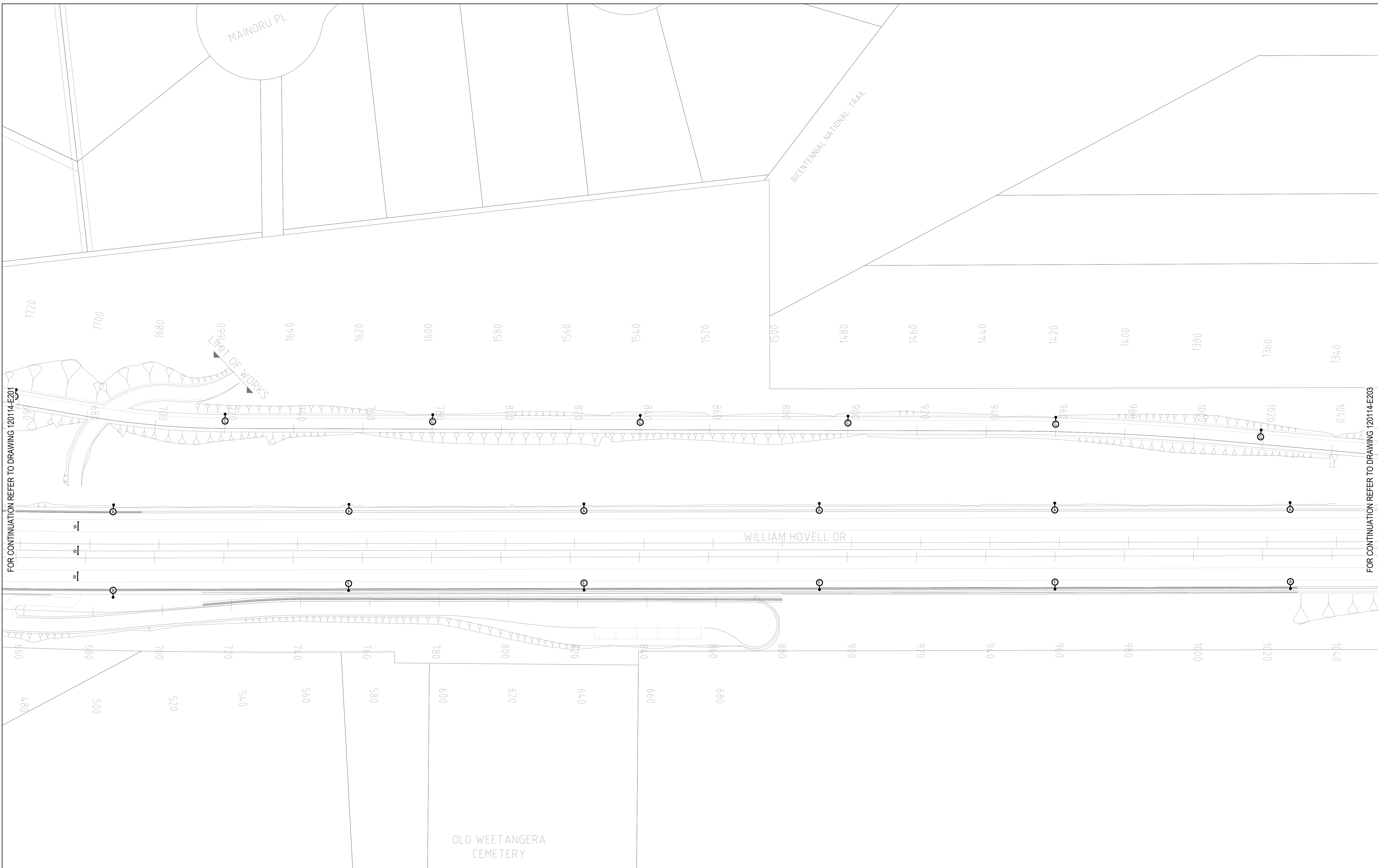


Rev.	Date	Details and Status	By	Rev.	Date	Details and Status	By
04	13.11.20	ISSUE FOR FINAL PSP	NF				
03	13.10.20	REISSUE FOR PSP (BACKGROUND UPDATE)	NF				
02	09.10.20	REISSUE FOR PSP (BACKGROUND UPDATE)	DO				
01	19.06.20	ISSUE FOR PSP	NF				



NOT FOR TENDER		<p>ACOR Rudds Consultants Pty Ltd Unit 1, 5 Bodalla Place Fyshwick ACT 2609 T +61 2 6240 2900</p>		Client SMEC AUSTRALIA PTY LTD		Drawing Title NEW - STREET LIGHTING SHEET 2 ELECTRICAL SERVICES	
Designed A. Bencke	Reviewed / Date M. Vidler 13.11.20	Approved / Date A. Bencke 13.11.20	Project WILLIAM HOVELL DRIVE DUPLICATION		Scale 1:500	Sht Size A1	Drawing No. 120114-E201
Drawn J. Thilakasi		AutoCAD Drawing 120114-E201 [04]		Rev. 04			

© COPYRIGHT of this design and plan is the property of ACOR Rudds Consultants Pty Ltd. ACN 054 221 162. All rights reserved. It must not be used, modified, reproduced or copied wholly or in part without written permission from ACOR Rudds Consultants Pty Ltd. ACOR Rudds Consultants is a trademark licensed to ACOR Rudds Consultants Pty Ltd by ACOR Consultants Pty Ltd.



FOR CONTINUATION REFER TO DRAWING 120114-E201

FOR CONTINUATION REFER TO DRAWING 120114-E203

Rev.	Date	Details and Status	By	Rev.	Date	Details and Status	By
04	13.11.20	ISSUE FOR FINAL PSP	NF				
03	13.10.20	REISSUE FOR PSP (BACKGROUND UPDATE)	NF				
02	09.10.20	REISSUE FOR PSP (BACKGROUND UPDATE)	DO				
01	19.06.20	ISSUE FOR PSP	NF				

FOR LEGEND REFER TO DRAWING 120114-E200

SCALE BAR FOR 1:500

NOT FOR TENDER

© COPYRIGHT of this design and plan is the property of ACOR Rudds Consultants Pty Ltd. ACN 054 221 162. All rights reserved. It must not be used, modified, reproduced or copied wholly or in part without written permission from ACOR Rudds Consultants Pty Ltd. ACOR Rudds Consultants is a trademark licensed to ACOR Rudds Consultants Pty Ltd by ACOR Consultants Pty Ltd.

ACOR Rudds Consultants Pty Ltd
 Unit 1, 5 Boddalla Place
 Fyshwick ACT 2609
 T +61 2 6240 2900

ENGINEERS | MANAGERS | INFRASTRUCTURE PLANNERS | DEVELOPMENT CONSULTANTS

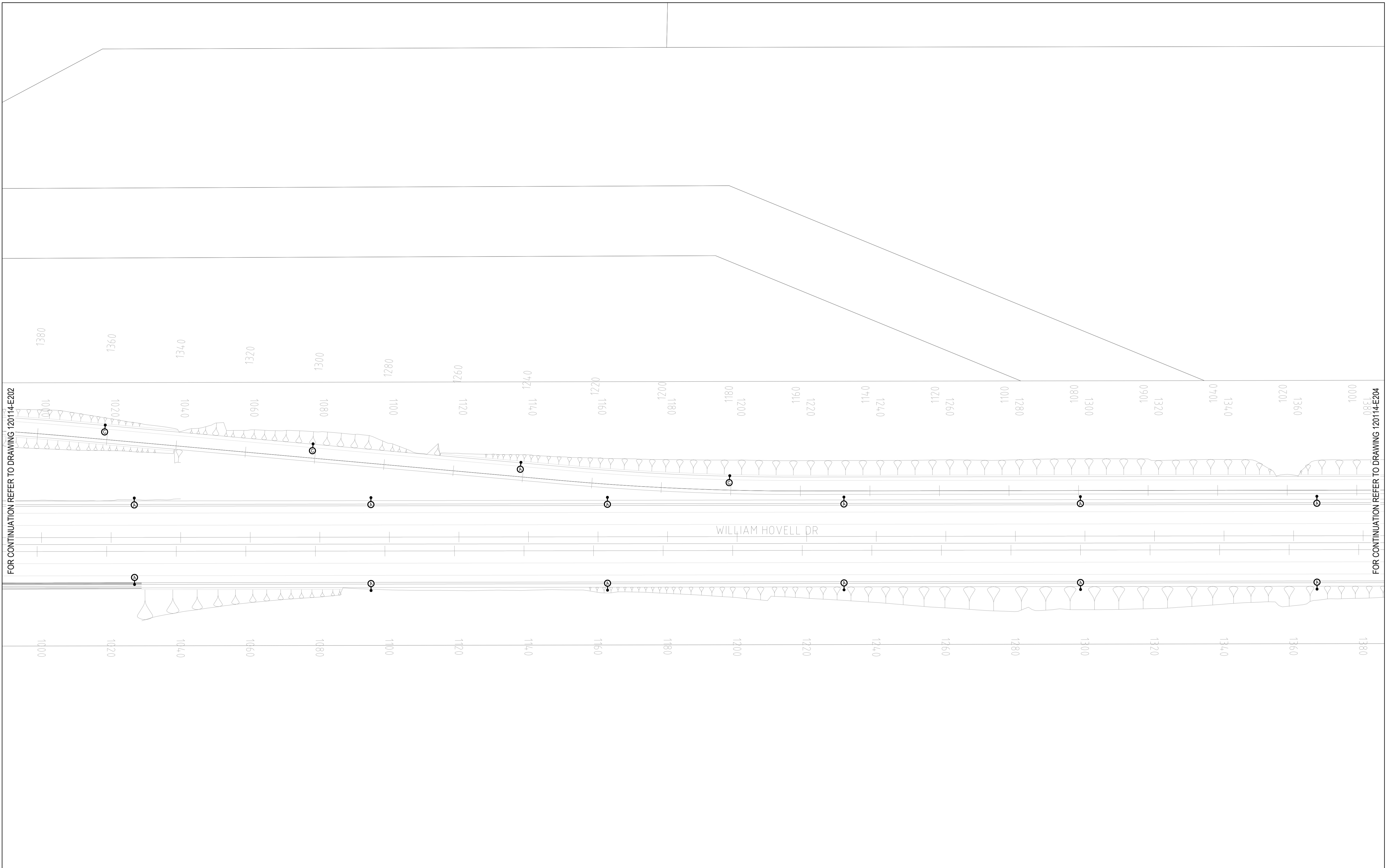
Designed A. Bencke	Reviewed / Date M. Vidler 13.11.20	Approved / Date A. Bencke 13.11.20
Drawn J. Thilakasiri	AutoCAD Drawing 120114-E202 [04]	

Client
SMEC AUSTRALIA PTY LTD

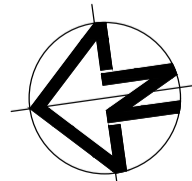
Project
**WILLIAM HOVELL DRIVE
DUPLICATION**

Drawing Title
**NEW - STREET LIGHTING
SHEET 3
ELECTRICAL SERVICES**

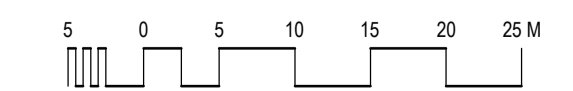
Scale 1:500	Sht Size A1	Drawing No. 120114-E202	Rev. 04
----------------	----------------	-----------------------------------	-------------------




Rev.	Date	Details and Status	By	Rev.	Date	Details and Status	By
04	13.11.20	ISSUE FOR FINAL PSP	NF				
03	13.10.20	REISSUE FOR PSP (BACKGROUND UPDATE)	NF				
02	09.10.20	REISSUE FOR PSP (BACKGROUND UPDATE)	DO				
01	19.06.20	ISSUE FOR PSP	NF				



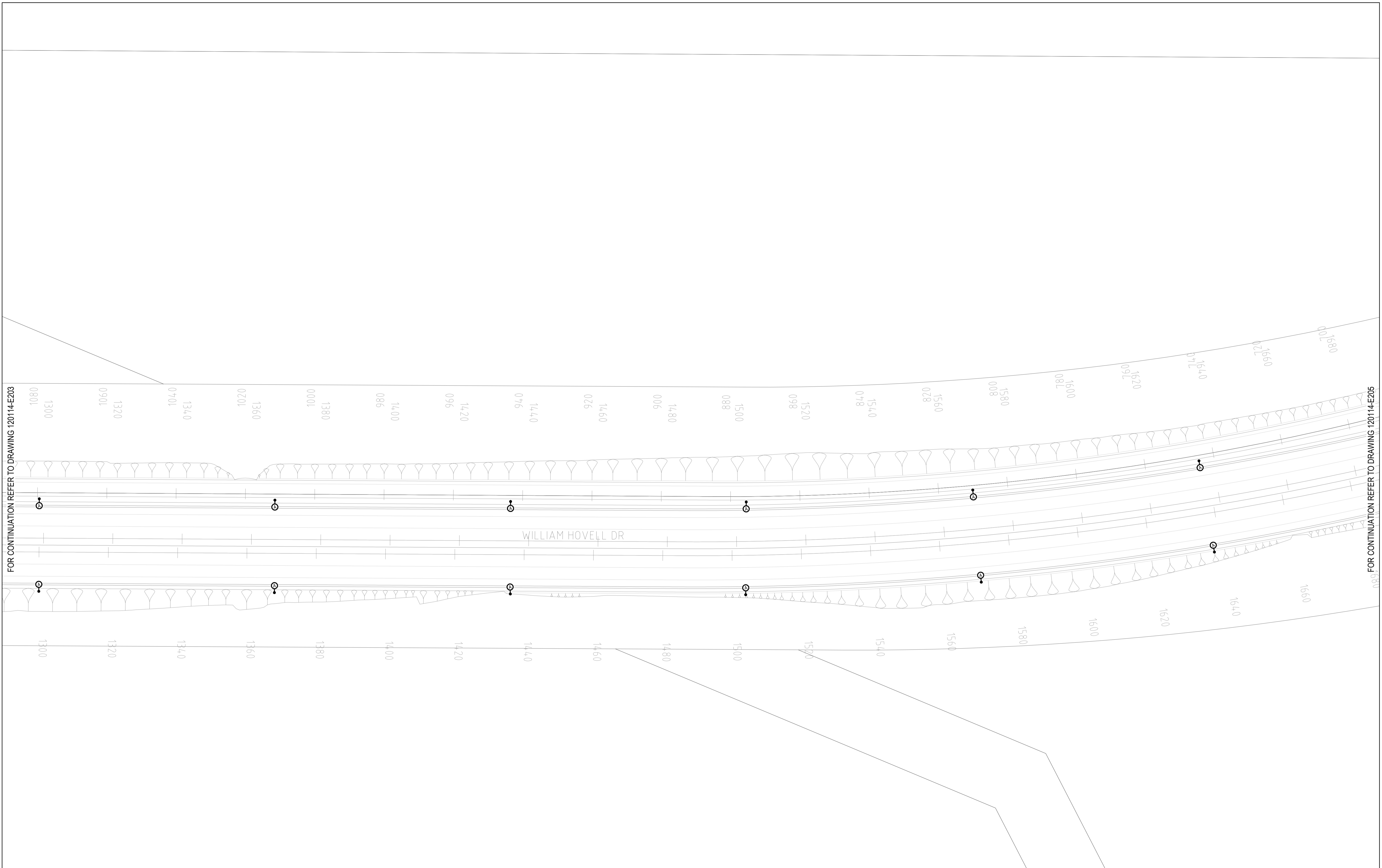
SCALEBAR FOR 1:500



FOR LEGEND REFER TO DRAWING 120114-E200

NOT FOR TENDER		 ACOR Rudds Consultants Pty Ltd <small>Unit 1, 5 Boddalla Place Fyshwick ACT 2609 T +61 2 6240 2900</small>		Client SMEC AUSTRALIA PTY LTD		Drawing Title NEW - STREET LIGHTING SHEET 4 ELECTRICAL SERVICES	
Designed A. Bencke		Reviewed / Date M. Vidler 13.11.20		Approved / Date A. Bencke 13.11.20		Project WILLIAM HOVELL DRIVE DUPLICATION	
Drawn J. Thilakasiri		AutoCAD Drawing 120114-E203 [04]		Scale 1:500		Sht Size A1	
				Drawing No. 120114-E203		Rev. 04	

© COPYRIGHT of this design and plan is the property of ACOR Rudds Consultants Pty Ltd. ACN 054 221 162, all rights reserved. It must not be used, modified, reproduced or copied wholly or in part without written permission from ACOR Rudds Consultants Pty Ltd. ACOR Rudds Consultants is a trademark licensed to ACOR Rudds Consultants Pty Ltd by ACOR Consultants Pty Ltd.



FOR CONTINUATION REFER TO DRAWING 120114-E203

FOR CONTINUATION REFER TO DRAWING 120114-E205

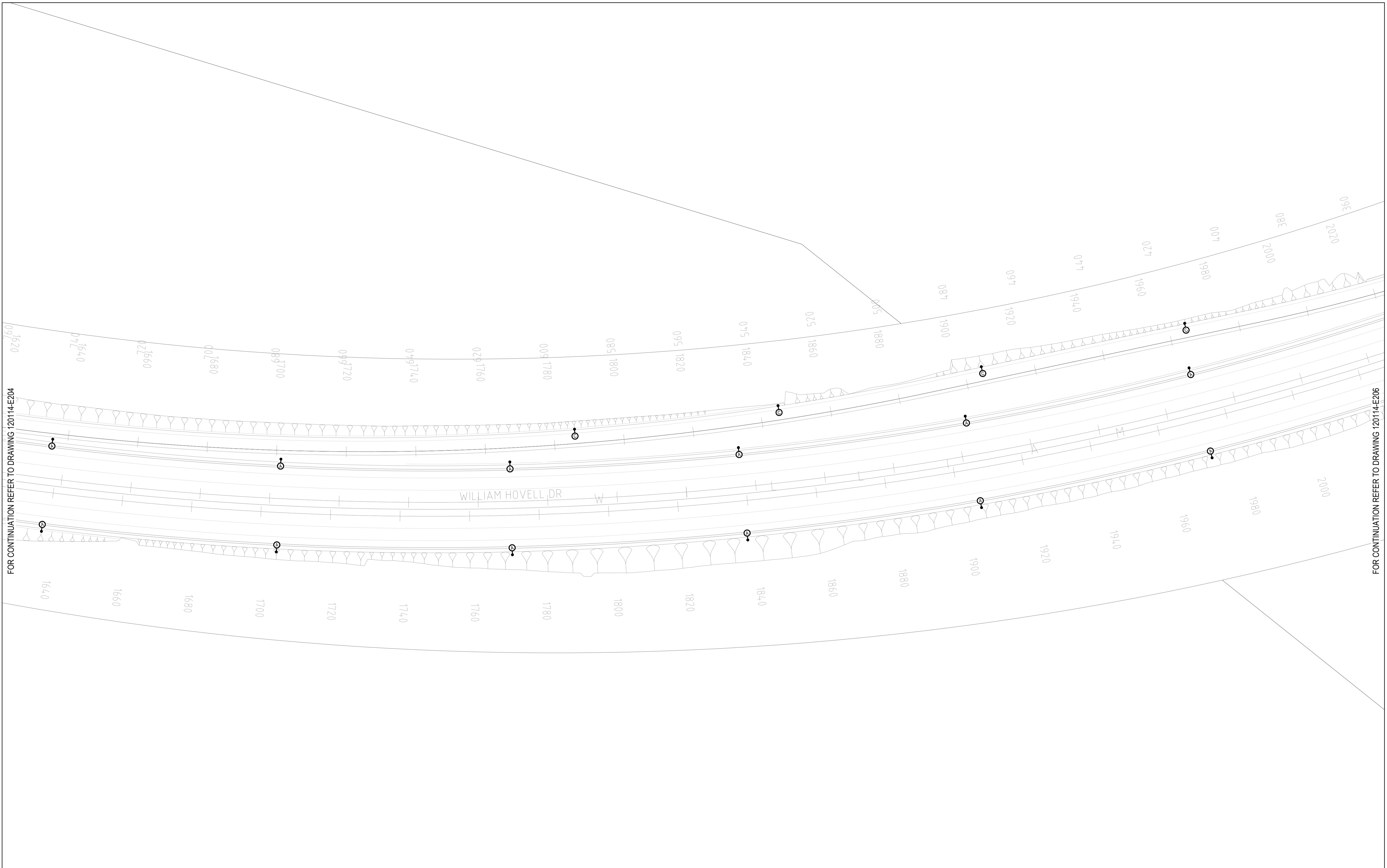
Rev.	Date	Details and Status	By	Rev.	Date	Details and Status	By
04	13.11.20	ISSUE FOR FINAL PSP	NF				
03	13.10.20	REISSUE FOR PSP (BACKGROUND UPDATE)	NF				
02	09.10.20	REISSUE FOR PSP (BACKGROUND UPDATE)	DO				
01	19.06.20	ISSUE FOR PSP	NF				

SCALEBAR FOR 1:500

FOR LEGEND REFER TO DRAWING 120114-E200

NOT FOR TENDER		 <small>ACOR Rudds Consultants Pty Ltd Unit 1, 5 Boddalla Place Fyshwick ACT 2609 T +61 2 6240 2900</small>		Client SMEC AUSTRALIA PTY LTD		Drawing Title NEW - STREET LIGHTING SHEET 5 ELECTRICAL SERVICES	
Designed A. Bencke		Reviewed / Date M. Vidler 13.11.20		Approved / Date A. Bencke 13.11.20		Project WILLIAM HOVELL DRIVE DUPLICATION	
Drawn J. Thilakasiri		AutoCAD Drawing 120114-E204 [04]		Scale 1:500		Sht Size A1	
				Drawing No. 120114-E204		Rev. 04	

© COPYRIGHT of this design and plan is the property of ACOR Rudds Consultants Pty Ltd. ACN 054 221 162, all rights reserved. It must not be used, modified, reproduced or copied wholly or in part without written permission from ACOR Rudds Consultants Pty Ltd. ACOR Rudds Consultants is a trademark licensed to ACOR Rudds Consultants Pty Ltd by ACOR Consultants Pty Ltd.



FOR CONTINUATION REFER TO DRAWING 120114-E204

FOR CONTINUATION REFER TO DRAWING 120114-E206

Rev.	Date	Details and Status	By	Rev.	Date	Details and Status	By
04	13.11.20	ISSUE FOR FINAL PSP	NF				
03	13.10.20	REISSUE FOR PSP (BACKGROUND UPDATE)	NF				
02	09.10.20	REISSUE FOR PSP (BACKGROUND UPDATE)	DO				
01	19.06.20	ISSUE FOR PSP	NF				

SCALE BAR FOR 1:500

FOR LEGEND REFER TO DRAWING 120114-E200

NOT FOR TENDER

© COPYRIGHT of this design and plan is the property of ACOR Rudds Consultants Pty Ltd. ACN 054 221 162, all rights reserved. It must not be used, modified, reproduced or copied wholly or in part without written permission from ACOR Rudds Consultants Pty Ltd. ACOR Rudds Consultants is a trademark licensed to ACOR Rudds Consultants Pty Ltd by ACOR Consultants Pty Ltd.

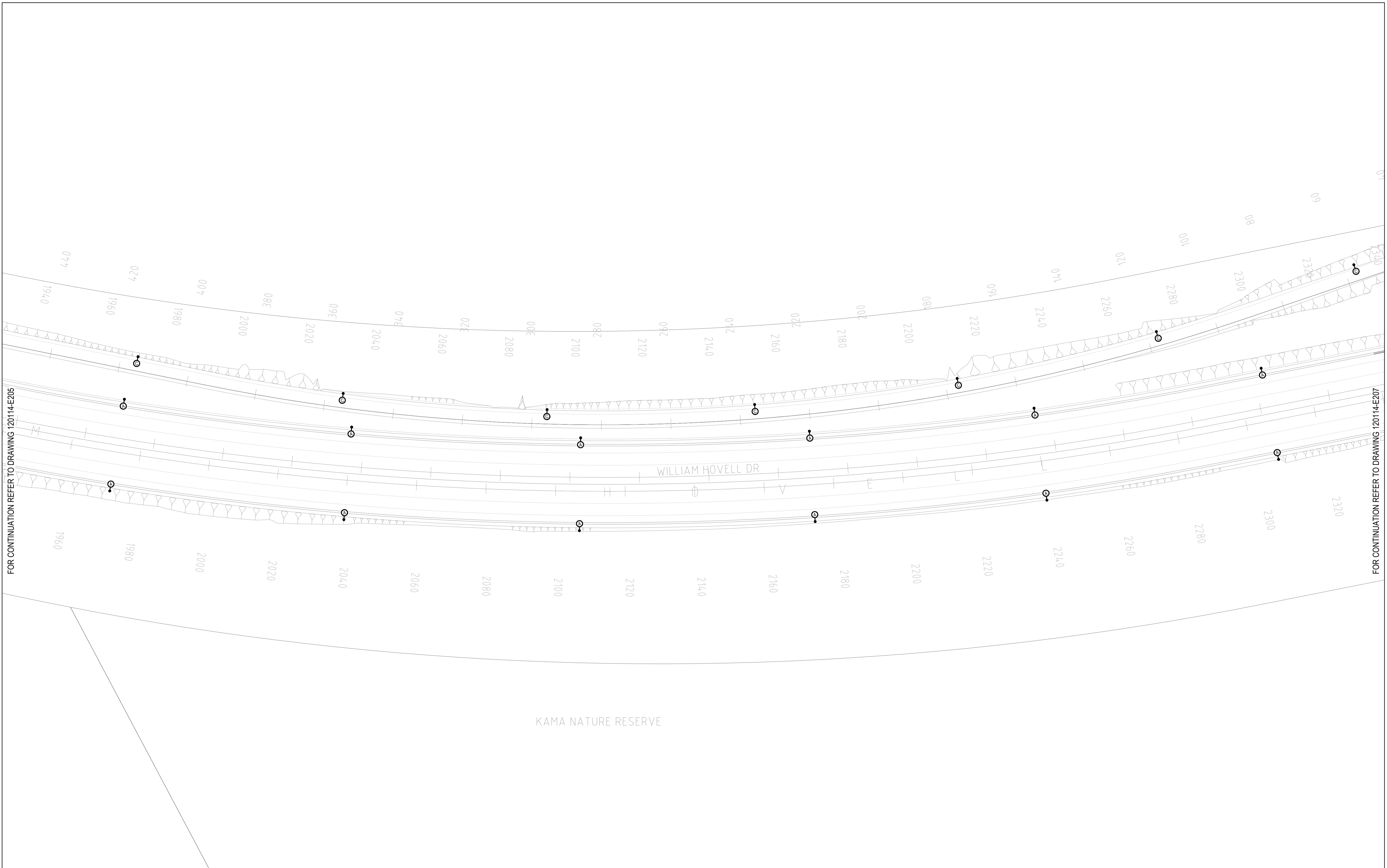
ACOR Rudds Consultants Pty Ltd
 Unit 1, 5 Boddalla Place
 Fishwick ACT 2609
 T +61 2 6240 2900

Designed A. Bencke	Reviewed / Date M. Vidler 13.11.20	Approved / Date A. Bencke 13.11.20
Drawn J. Thilakasiri	AutocAD Drawing 120114-E205 [04]	

Client
SMEC AUSTRALIA PTY LTD

Project
**WILLIAM HOVELL DRIVE
DUPLICATION**

Drawing Title NEW - STREET LIGHTING SHEET 6 ELECTRICAL SERVICES		Scale 1:500	Sht Size A1	Drawing No. 120114-E205	Rev. 04
---	--	-----------------------	-----------------------	-----------------------------------	-------------------



FOR CONTINUATION REFER TO DRAWING 120114-E205

FOR CONTINUATION REFER TO DRAWING 120114-E207

Rev.	Date	Details and Status	By	Rev.	Date	Details and Status	By
04	13.11.20	ISSUE FOR FINAL PSP	NF				
03	13.10.20	REISSUE FOR PSP (BACKGROUND UPDATE)	NF				
02	09.10.20	REISSUE FOR PSP (BACKGROUND UPDATE)	DO				
01	19.06.20	ISSUE FOR PSP	NF				

KAMA NATURE RESERVE

SCALEBAR FOR 1:500

5 0 5 10 15 20 25 M

FOR LEGEND REFER TO DRAWING 120114-E200

NOT FOR TENDER

© COPYRIGHT of this design and plan is the property of ACOR Rudds Consultants Pty Ltd. ACN 054 221 162. All rights reserved. It must not be used, modified, reproduced or copied wholly or in part without written permission from ACOR Rudds Consultants Pty Ltd. ACOR Rudds Consultants is a trademark licensed to ACOR Rudds Consultants Pty Ltd by ACOR Consultants Pty Ltd.

ACOR Rudds Consultants Pty Ltd
Unit 1, 5 Boddalla Place
Fyshwick ACT 2609
T +61 2 6240 2900

Designed A. Bencke	Reviewed / Date M. Vidler 13.11.20	Approved / Date A. Bencke 13.11.20
Drawn J. Thilakasiri	AutoCAD Drawing 120114-E206 [04]	

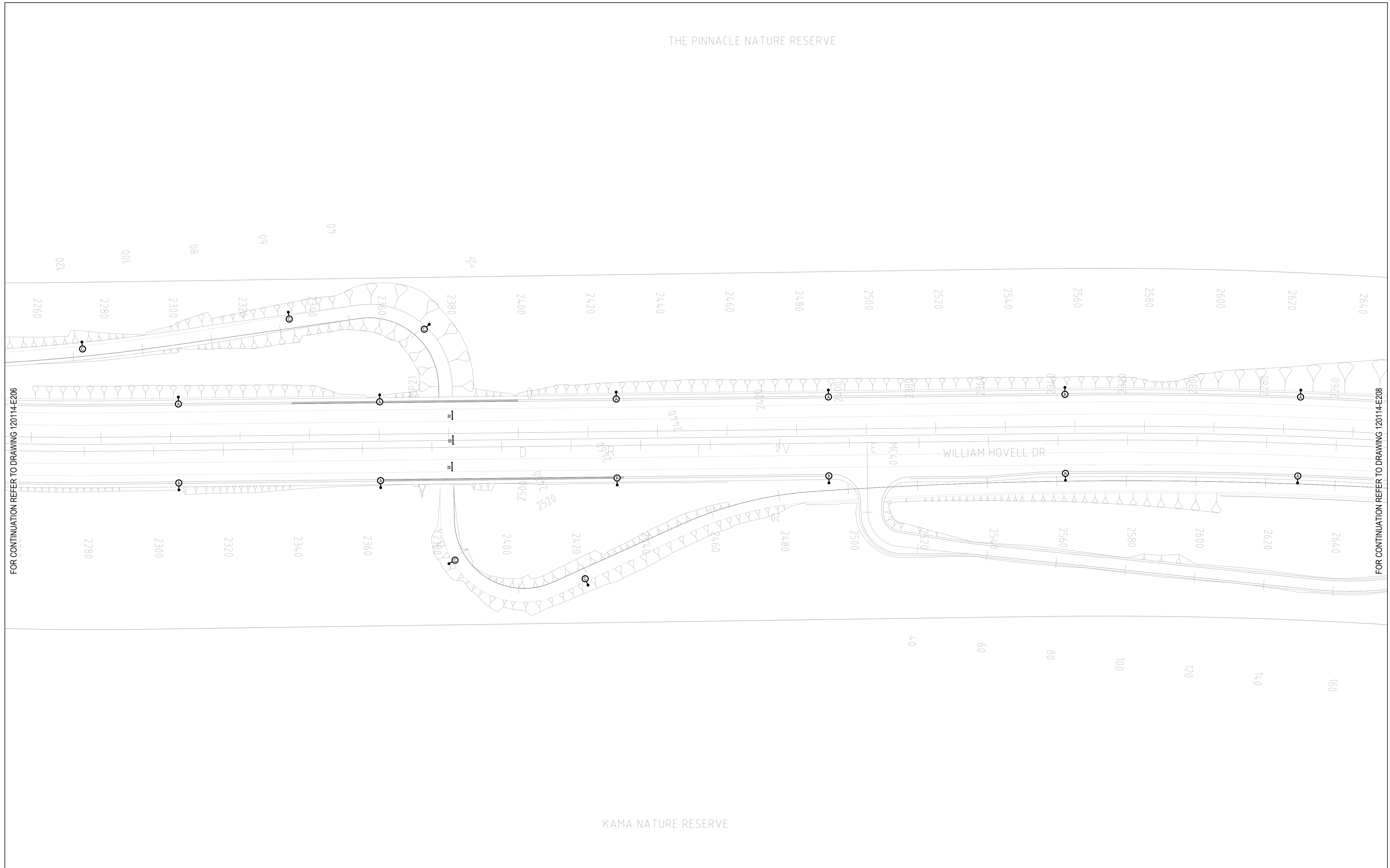
Client
SMEC AUSTRALIA PTY LTD

Project
**WILLIAM HOVELL DRIVE
DUPLICATION**

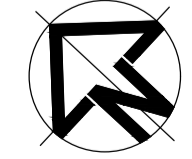
Drawing Title NEW - STREET LIGHTING SHEET 7 ELECTRICAL SERVICES		Scale 1:500	Sht Size A1	Drawing No. 120114-E206	Rev. 04
---	--	-----------------------	-----------------------	-----------------------------------	-------------------

THE PINNACLE NATURE RESERVE

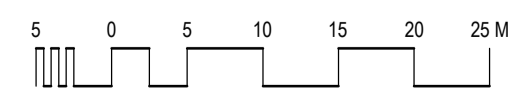
KAMA NATURE RESERVE



Rev.	Date	Details and Status	By	Rev.	Date	Details and Status	By
04	13.11.20	ISSUE FOR FINAL PSP	NF				
03	13.10.20	REISSUE FOR PSP (BACKGROUND UPDATE)	NF				
02	09.10.20	REISSUE FOR PSP (BACKGROUND UPDATE)	DO				
01	19.06.20	ISSUE FOR PSP	NF				




SCALEBAR FOR 1:500



FOR LEGEND REFER TO DRAWING 120114-E200

NOT FOR TENDER



ACOR Rudds Consultants Pty Ltd
Unit 1, 5 Boddalla Place
Fyshwick ACT 2609
T +61 2 6240 2900

Client
SMEC AUSTRALIA PTY LTD

Project
WILLIAM HOVELL DRIVE
DUPLICATION

Drawing Title
NEW - STREET LIGHTING
SHEET 8
ELECTRICAL SERVICES

Scale
1:500

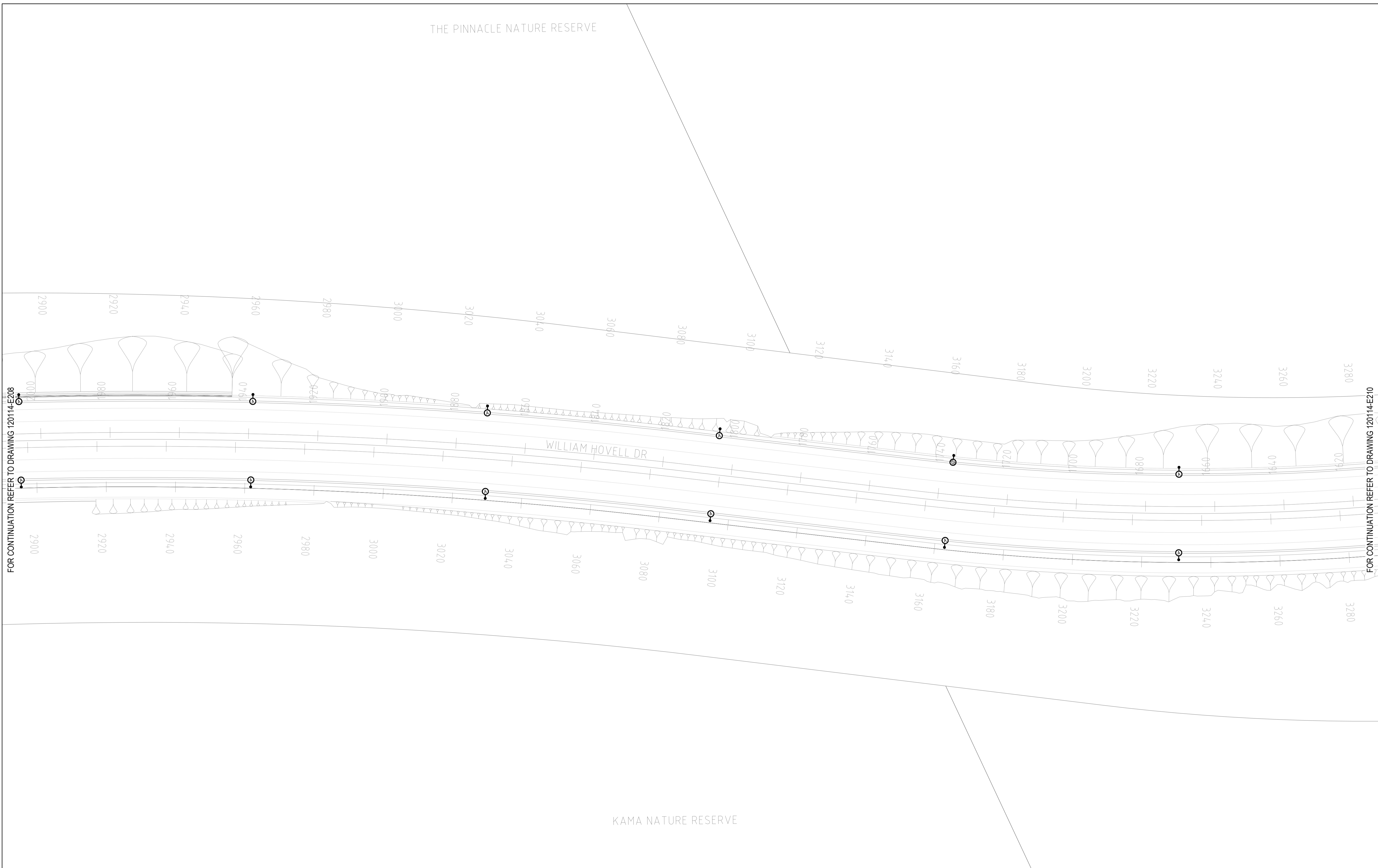
Sheet Size
A1

Drawing No.
120114-E207

Rev.
04

© COPYRIGHT of this design and plan is the property of ACOR Rudds Consultants Pty Ltd. ACN 054 221 162, all rights reserved. It must not be used, modified, reproduced or copied wholly or in part without written permission from ACOR Rudds Consultants Pty Ltd. ACOR Rudds Consultants is a trademark licensed to ACOR Rudds Consultants Pty Ltd by ACOR Consultants Pty Ltd.

Designed A. Bencke	Reviewed / Date M. Vidler 13.11.20	Approved / Date A. Bencke 13.11.20
Drawn J. Thilakasiri	AutoCAD Drawing 120114-E207 [04]	



Rev.	Date	Details and Status	By	Rev.	Date	Details and Status	By
04	13.11.20	ISSUE FOR FINAL PSP	NF				
03	13.10.20	REISSUE FOR PSP (BACKGROUND UPDATE)	NF				
02	09.10.20	REISSUE FOR PSP (BACKGROUND UPDATE)	DO				
01	19.06.20	ISSUE FOR PSP	NF				

SCALEBAR FOR 1:500

FOR LEGEND REFER TO DRAWING 120114-E200

NOT FOR TENDER

© COPYRIGHT of this design and plan is the property of ACOR Rudds Consultants Pty Ltd. ACN 054 221 162. All rights reserved. It must not be used, modified, reproduced or copied wholly or in part without written permission from ACOR Rudds Consultants Pty Ltd. ACOR Rudds Consultants is a trademark licensed to ACOR Rudds Consultants Pty Ltd by ACOR Consultants Pty Ltd.

ACOR Rudds Consultants Pty Ltd
 Unit 1, 5 Boddalla Place
 Fyshwick ACT 2609
 T +61 2 6240 2900

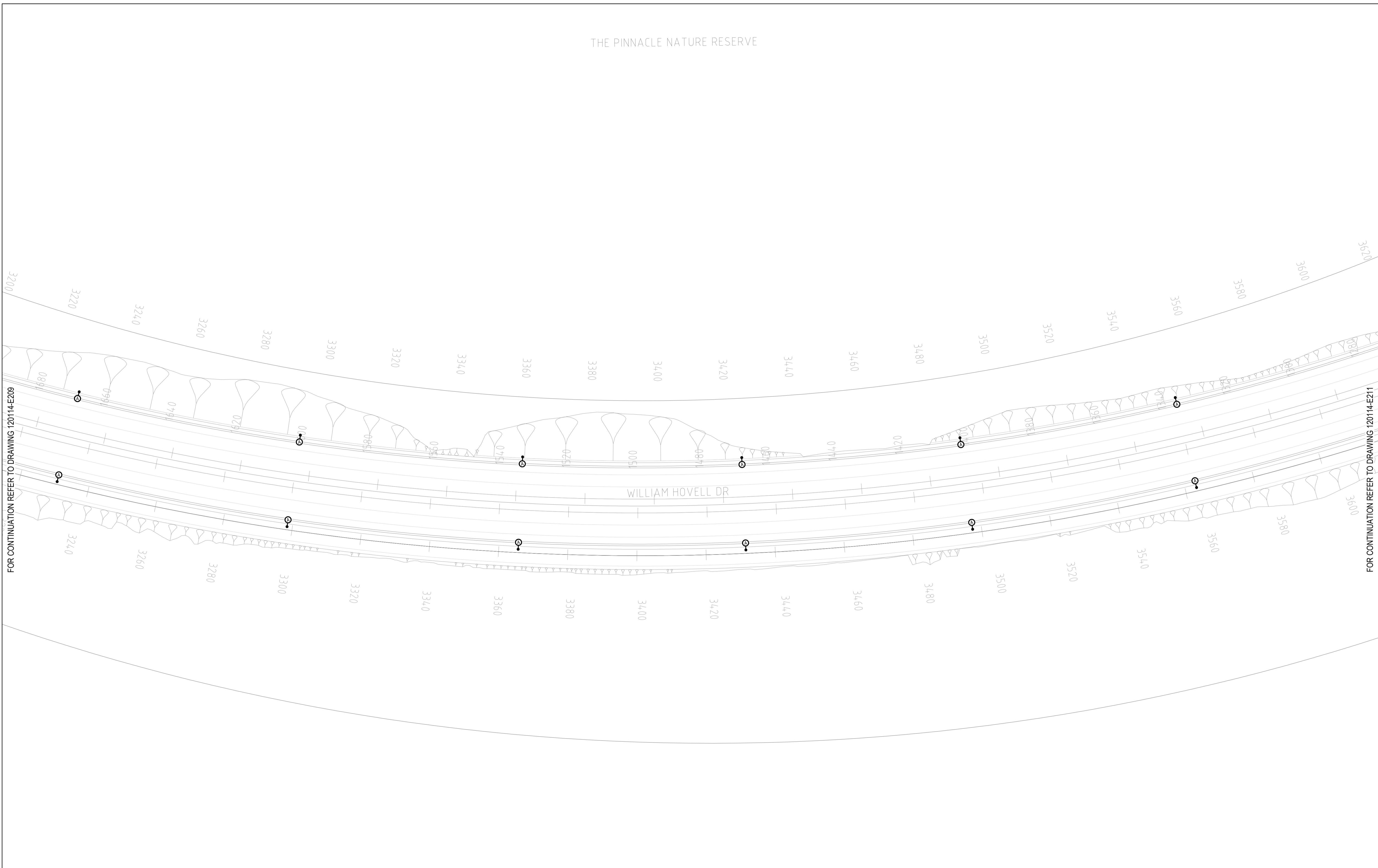
Designed A. Bencke	Reviewed / Date M. Vidler 13.11.20	Approved / Date A. Bencke 13.11.20
Drawn J. Thilakasiri	AutoCAD Drawing 120114-E209 [04]	

Client
SMEC AUSTRALIA PTY LTD

Project
**WILLIAM HOVELL DRIVE
DUPLICATION**

Drawing Title NEW - STREET LIGHTING SHEET 10 ELECTRICAL SERVICES		Scale 1:500	Sht Size A1	Drawing No. 120114-E209	Rev. 04
--	--	-----------------------	-----------------------	-----------------------------------	-------------------

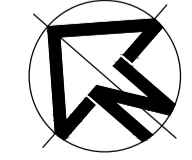
THE PINNACLE NATURE RESERVE



FOR CONTINUATION REFER TO DRAWING 120114-E209

FOR CONTINUATION REFER TO DRAWING 120114-E211

Rev.	Date	Details and Status	By	Rev.	Date	Details and Status	By
04	13.11.20	ISSUE FOR FINAL PSP	NF				
03	13.10.20	REISSUE FOR PSP (BACKGROUND UPDATE)	NF				
02	09.10.20	REISSUE FOR PSP (BACKGROUND UPDATE)	DO				
01	19.06.20	ISSUE FOR PSP	NF				




SCALEBAR FOR 1:500

5 0 5 10 15 20 25 M

FOR LEGEND REFER TO DRAWING 120114-E200

NOT FOR TENDER

© COPYRIGHT of this design and plan is the property of ACOR Rudds Consultants Pty Ltd. ACN 054 221 162. All rights reserved. It must not be used, modified, reproduced or copied wholly or in part without written permission from ACOR Rudds Consultants Pty Ltd. ACOR Rudds Consultants is a trademark licensed to ACOR Rudds Consultants Pty Ltd by ACOR Consultants Pty Ltd.



ACOR Rudds Consultants Pty Ltd
Unit 1, 5 Boddalla Place
 Fyshwick ACT 2609
 T +61 2 6240 2900

ENGINEERS MANAGERS INFRASTRUCTURE PLANNERS DEVELOPMENT CONSULTANTS

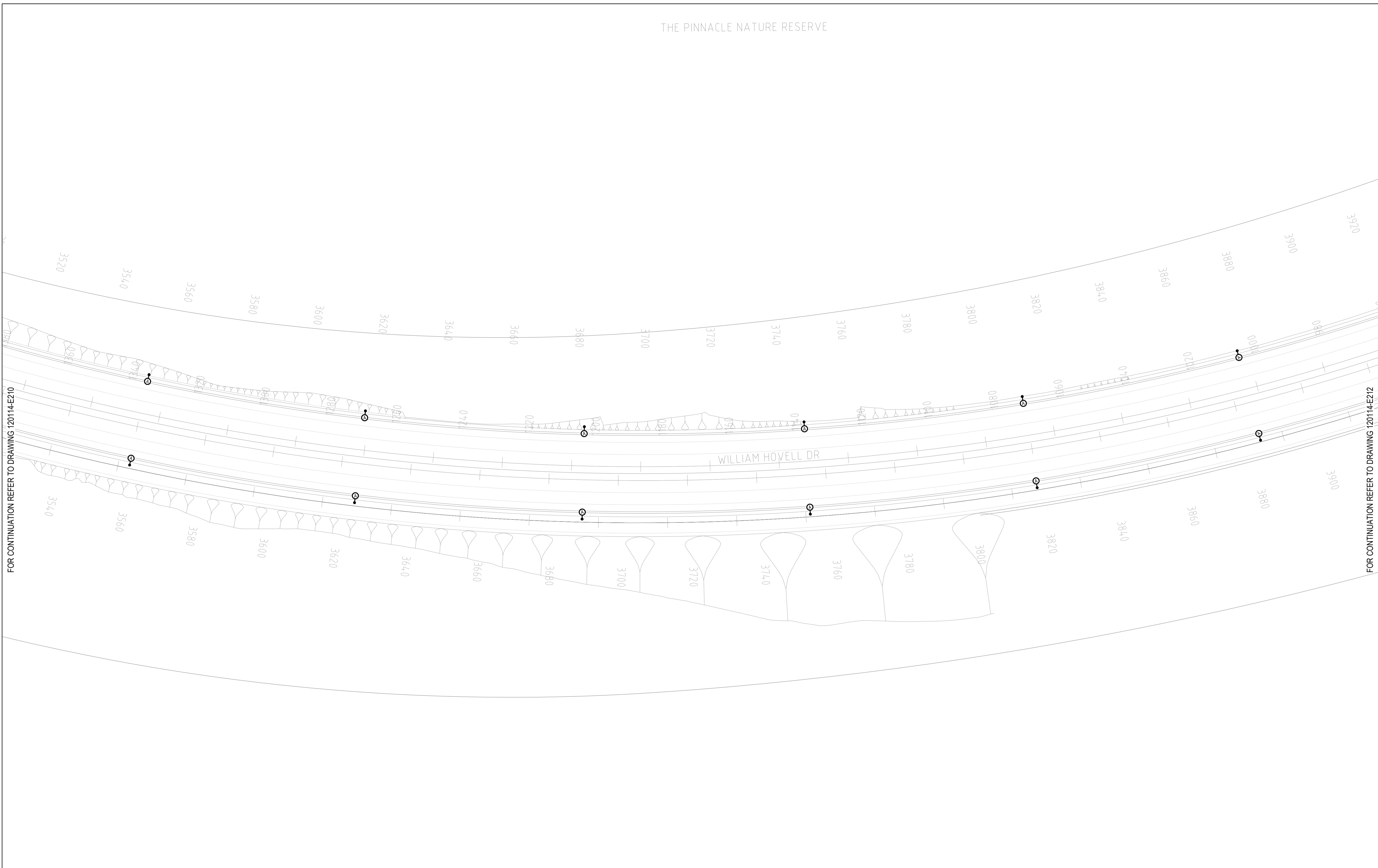
Designed A. Bencke	Reviewed / Date M. Vidler 13.11.20	Approved / Date A. Bencke 13.11.20
Drawn J. Thilakasiri	AutoCAD Drawing 120114-E210 [04]	

Client
SMEC AUSTRALIA PTY LTD

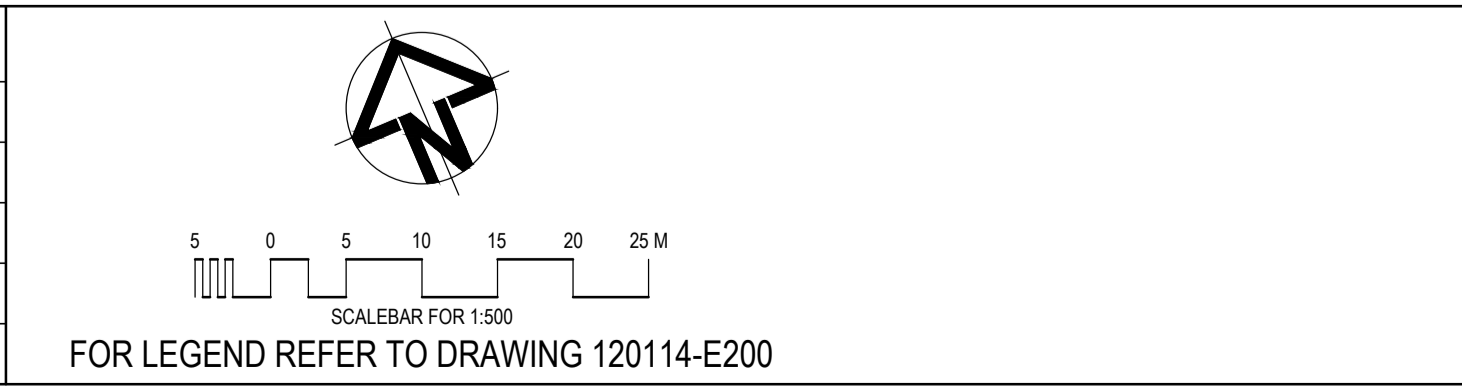
Project
**WILLIAM HOVELL DRIVE
DUPLICATION**

Drawing Title NEW - STREET LIGHTING SHEET 11 ELECTRICAL SERVICES			
Scale 1:500	Sht Size A1	Drawing No. 120114-E210	Rev. 04

THE PINNACLE NATURE RESERVE



Rev.	Date	Details and Status	By	Rev.	Date	Details and Status	By
04	13.11.20	ISSUE FOR FINAL PSP	NF				
03	13.10.20	REISSUE FOR PSP (BACKGROUND UPDATE)	NF				
02	09.10.20	REISSUE FOR PSP (BACKGROUND UPDATE)	DO				
01	19.06.20	ISSUE FOR PSP	NF				



NOT FOR TENDER

© COPYRIGHT of this design and plan is the property of ACOR Rudds Consultants Pty Ltd. ACN 054 221 162, all rights reserved. It must not be used, modified, reproduced or copied wholly or in part without written permission from ACOR Rudds Consultants Pty Ltd. ACOR Rudds Consultants is a trademark licensed to ACOR Rudds Consultants Pty Ltd by ACOR Consultants Pty Ltd.

ACOR Rudds Consultants Pty Ltd
 Unit 1, 5 Boddalla Place
 Fyshwick ACT 2609
 T +61 2 6240 2900

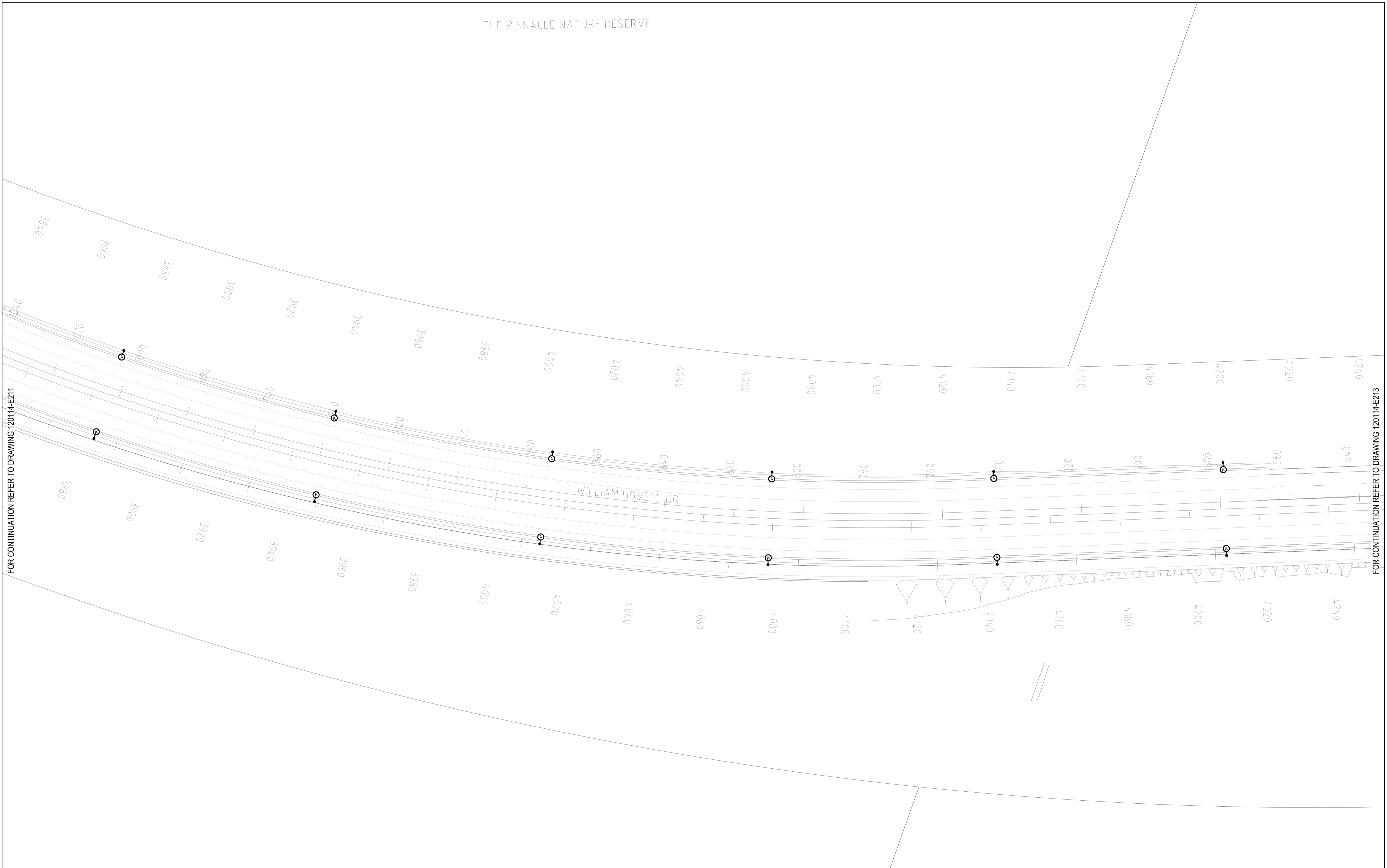
ACOR Rudds CONSULTANTS
 ENGINEERS MANAGERS INFRASTRUCTURE PLANNERS DEVELOPMENT CONSULTANTS

Designed A. Bencke	Reviewed / Date M. Vidler 13.11.20	Approved / Date A. Bencke 13.11.20
Drawn J. Thilakasiri	AutCAD Drawing 120114-E211 [04]	

Client
SMEC AUSTRALIA PTY LTD

Project
**WILLIAM HOVELL DRIVE
DUPLICATION**

Drawing Title NEW - STREET LIGHTING SHEET 12 ELECTRICAL SERVICES		Scale 1:500	Sht Size A1	Drawing No. 120114-E211	Rev. 04
--	--	-----------------------	-----------------------	-----------------------------------	-------------------



FOR CONTINUATION REFER TO DRAWING 120114-E211

FOR CONTINUATION REFER TO DRAWING 120114-E213

Rev.	Date	Details and Status	By	Rev.	Date	Details and Status	By
04	13.11.20	ISSUE FOR FINAL PSP	NF				
03	13.10.20	REISSUE FOR PSP (BACKGROUND UPDATE)	NF				
02	09.10.20	REISSUE FOR PSP (BACKGROUND UPDATE)	DO				
01	19.06.20	ISSUE FOR PSP	NF				

SCALEBAR FOR 1:500

FOR LEGEND REFER TO DRAWING 120114-E200

NOT FOR TENDER

© COPYRIGHT of this design and plan is the property of ACOR Rudds Consultants Pty Ltd. ACN 054 221 162. All rights reserved. It must not be used, modified, reproduced or copied wholly or in part without written permission from ACOR Rudds Consultants Pty Ltd. ACOR Rudds Consultants is a trademark licensed to ACOR Rudds Consultants Pty Ltd by ACOR Consultants Pty Ltd.

ACOR Rudds Consultants Pty Ltd
Unit 1, 5 Boddalla Place
 Fyshwick ACT 2609
 T +61 2 6240 2900

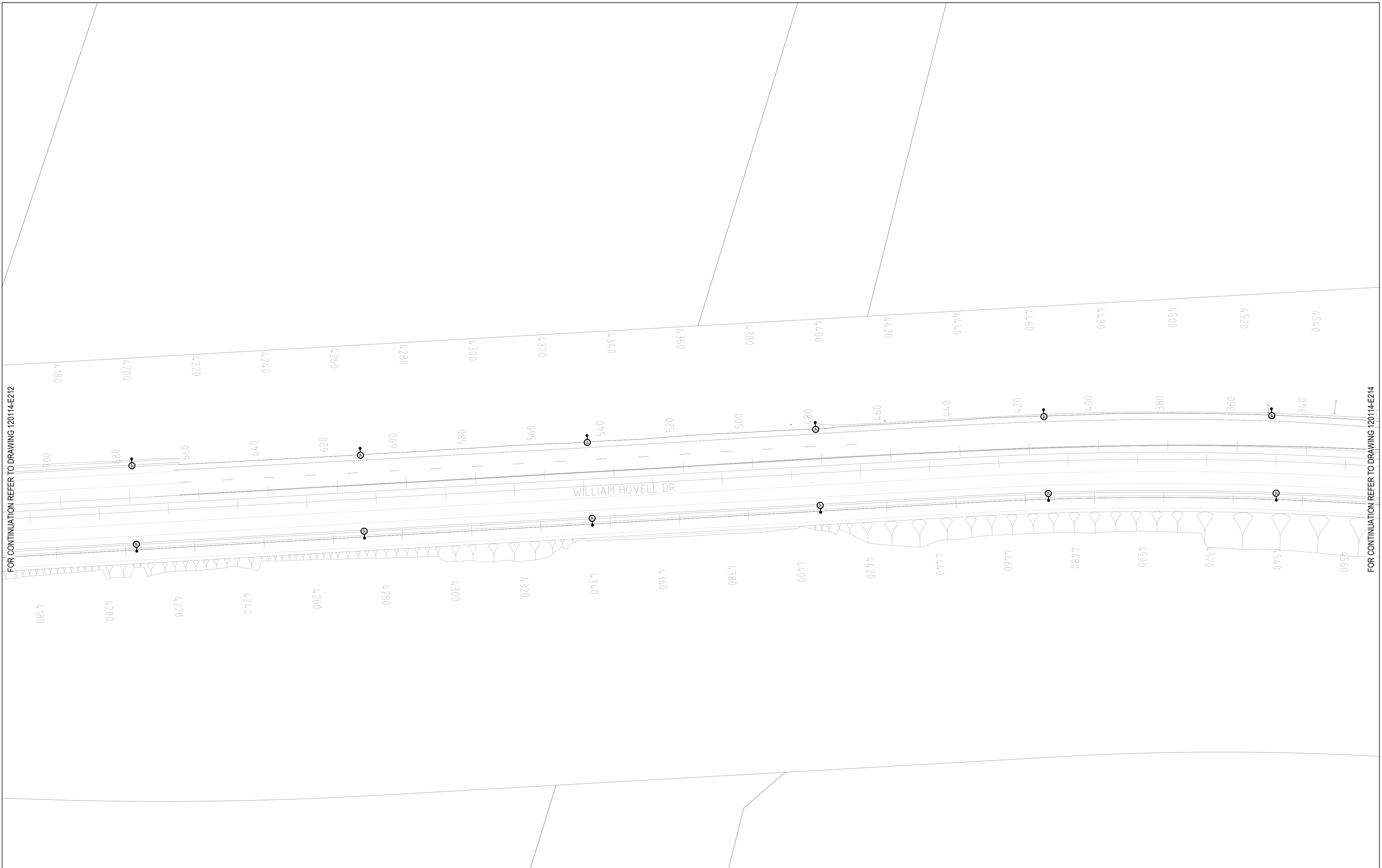
ENGINEERS | MANAGERS | INFRASTRUCTURE PLANNERS | DEVELOPMENT CONSULTANTS

Designed A. Bencke	Reviewed / Date M. Vidler 13.11.20	Approved / Date A. Bencke 13.11.20
Drawn J. Thilakasiri	AutocAD Drawing 120114-E212 [04]	

Client
SMEC AUSTRALIA PTY LTD

Project
**WILLIAM HOVELL DRIVE
DUPLICATION**

Drawing Title NEW - STREET LIGHTING SHEET 13 ELECTRICAL SERVICES		Scale 1:500	Sht Size A1	Drawing No. 120114-E212	Rev. 04
--	--	-----------------------	-----------------------	-----------------------------------	-------------------



Rev.	Date	Details and Status	By	Rev.	Date	Details and Status	By
04	13.11.20	ISSUE FOR FINAL PSP	NF				
03	13.10.20	REISSUE FOR PSP (BACKGROUND UPDATE)	NF				
02	09.10.20	REISSUE FOR PSP (BACKGROUND UPDATE)	DO				
01	19.06.20	ISSUE FOR PSP	NF				

SCALEBAR FOR 1:500

FOR LEGEND REFER TO DRAWING 120114-E200

NOT FOR TENDER

© COPYRIGHT of this design and plan is the property of ACOR Rudds Consultants Pty Ltd. ACN 054 221 162. All rights reserved. It must not be used, modified, reproduced or copied wholly or in part without written permission from ACOR Rudds Consultants Pty Ltd. ACOR Rudds Consultants is a trademark licensed to ACOR Rudds Consultants Pty Ltd by ACOR Consultants Pty Ltd.

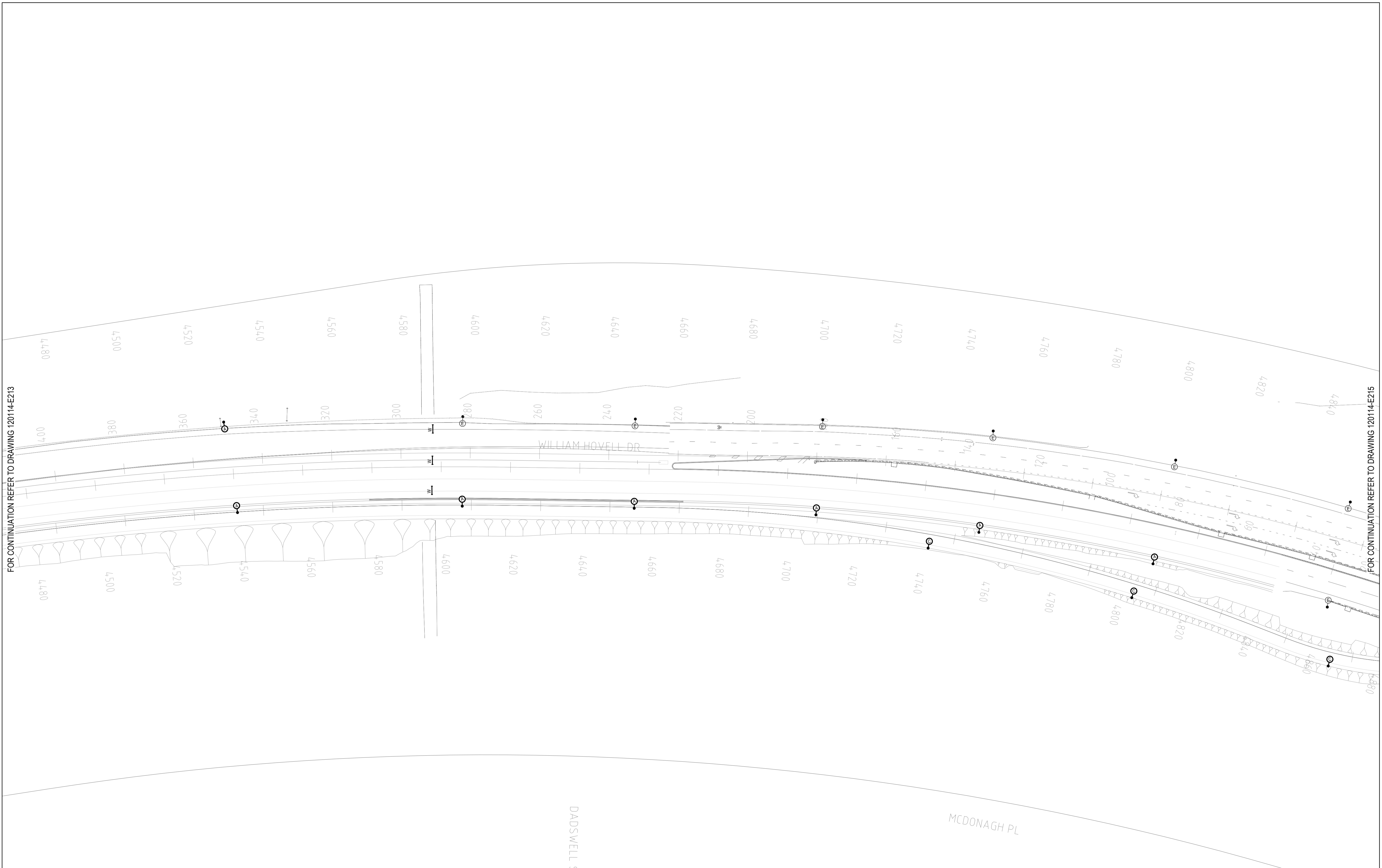
ACOR Rudds Consultants Pty Ltd
 Unit 1, 5 Boddalla Place
 Fyshwick ACT 2609
 T +61 2 6240 2900

Designed A. Bencke	Reviewed / Date M. Vidler 13.11.20	Approved / Date A. Bencke 13.11.20
Drawn J. Thilakasiri	AutocAD Drawing 120114-E213 [04]	

Client
SMEC AUSTRALIA PTY LTD

Project
**WILLIAM HOVELL DRIVE
DUPLICATION**

Drawing Title NEW - STREET LIGHTING SHEET 14 ELECTRICAL SERVICES			
Scale 1:500	Sht Size A1	Drawing No. 120114-E213	Rev. 04



FOR CONTINUATION REFER TO DRAWING 120114-E213

FOR CONTINUATION REFER TO DRAWING 120114-E215

Rev.	Date	Details and Status	By	Rev.	Date	Details and Status	By
04	13.11.20	ISSUE FOR FINAL PSP	NF				
03	13.10.20	REISSUE FOR PSP (BACKGROUND UPDATE)	NF				
02	09.10.20	REISSUE FOR PSP (BACKGROUND UPDATE)	DO				
01	19.06.20	ISSUE FOR PSP	NF				

SCALEBAR FOR 1:500

FOR LEGEND REFER TO DRAWING 120114-E200

NOT FOR TENDER

© COPYRIGHT of this design and plan is the property of ACOR Rudds Consultants Pty Ltd. ACN 054 221 162, all rights reserved. It must not be used, modified, reproduced or copied wholly or in part without written permission from ACOR Rudds Consultants Pty Ltd. ACOR Rudds Consultants is a trademark licensed to ACOR Rudds Consultants Pty Ltd by ACOR Consultants Pty Ltd.

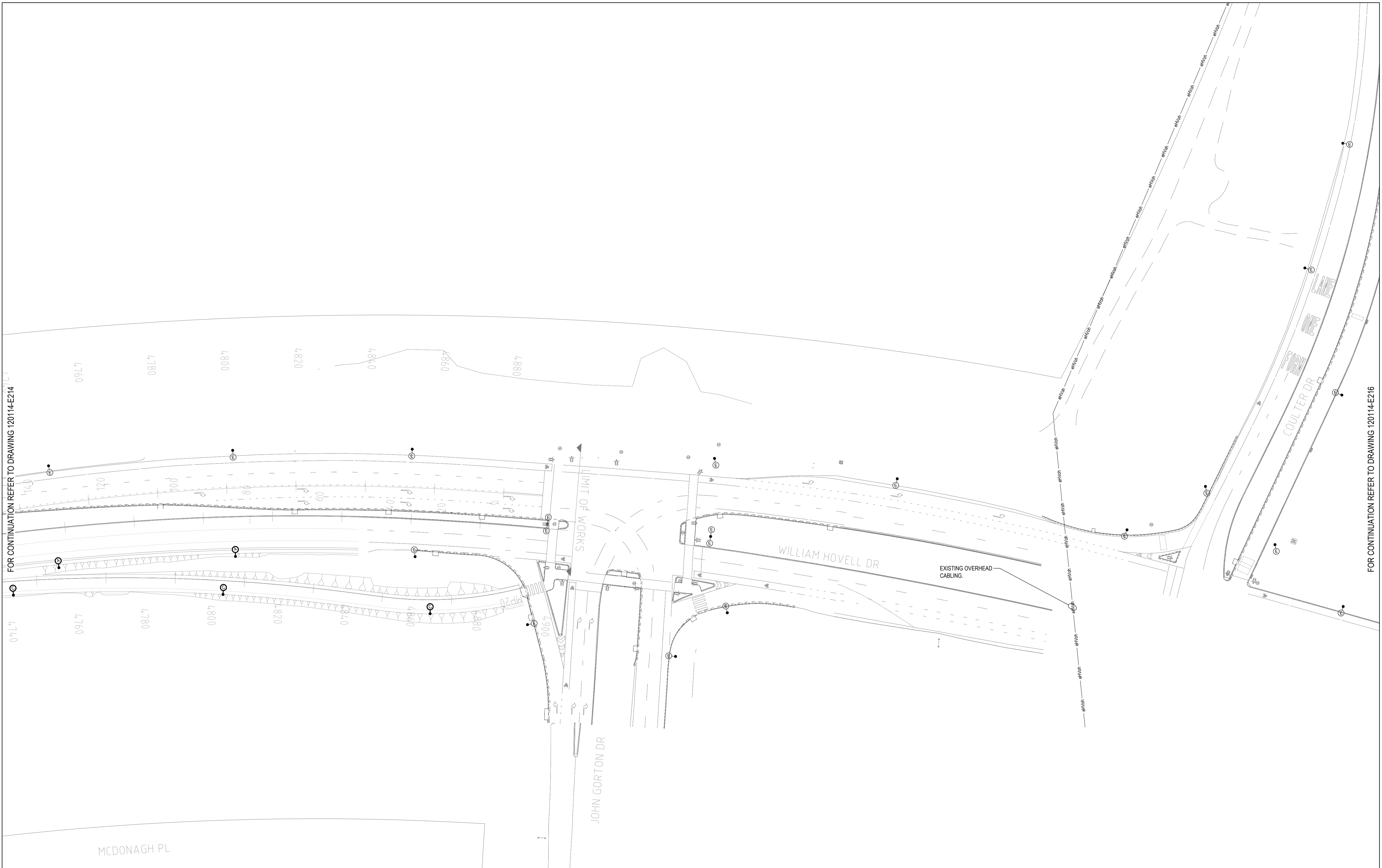
ACOR Rudds Consultants Pty Ltd
 Unit 1, 5 Boddalla Place
 Fyshwick ACT 2609
 T +61 2 6240 2900

Designed A. Bencke	Reviewed / Date M. Vidler 13.11.20	Approved / Date A. Bencke 13.11.20
Drawn J. Thilakasiri	AutocAD Drawing 120114-E214 [04]	

Client
SMEC AUSTRALIA PTY LTD

Project
**WILLIAM HOVELL DRIVE
DUPLICATION**

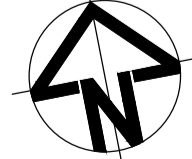
Drawing Title NEW - STREET LIGHTING SHEET 15 ELECTRICAL SERVICES			
Scale 1:500	Sht Size A1	Drawing No. 120114-E214	Rev. 04



FOR CONTINUATION REFER TO DRAWING 120114-E214

FOR CONTINUATION REFER TO DRAWING 120114-E216

Rev.	Date	Details and Status	By	Rev.	Date	Details and Status	By
04	13.11.20	ISSUE FOR FINAL PSP	NF				
03	13.10.20	REISSUE FOR PSP (BACKGROUND UPDATE)	NF				
02	09.10.20	REISSUE FOR PSP (BACKGROUND UPDATE)	DO				
01	19.06.20	ISSUE FOR PSP	NF				




SCALEBAR FOR 1:500

5 0 5 10 15 20 25 M

FOR LEGEND REFER TO DRAWING 120114-E200

NOT FOR TENDER

© COPYRIGHT of this design and plan is the property of ACOR Rudds Consultants Pty Ltd. ACN 054 221 162, all rights reserved. It must not be used, modified, reproduced or copied wholly or in part without written permission from ACOR Rudds Consultants Pty Ltd. ACOR Rudds Consultants is a trademark licensed to ACOR Rudds Consultants Pty Ltd by ACOR Consultants Pty Ltd.



ACOR Rudds Consultants Pty Ltd
Unit 1, 5 Bodalla Place
Fyshwick ACT 2609
T +61 2 6240 2900

ENGINEERS MANAGERS INFRASTRUCTURE PLANNERS DEVELOPMENT CONSULTANTS

Designed A. Bencke	Reviewed / Date M. Vidler 13.11.20	Approved / Date A. Bencke 13.11.20
Drawn J. Thilakasiri	AutoCAD Drawing 120114-E215 [04]	

Client
SMEC AUSTRALIA PTY LTD

Project
**WILLIAM HOVELL DRIVE
DUPLICATION**

Drawing Title NEW - STREET LIGHTING SHEET 16 ELECTRICAL SERVICES			
Scale 1:500	Sht Size A1	Drawing No. 120114-E215	Rev. 04



Rev.	Date	Details and Status	By	Rev.	Date	Details and Status	By
04	13.11.20	ISSUE FOR FINAL PSP	NF				
03	13.10.20	REISSUE FOR PSP (BACKGROUND UPDATE)	NF				
02	09.10.20	REISSUE FOR PSP (BACKGROUND UPDATE)	DO				
01	19.06.20	ISSUE FOR PSP	NF				

FOR LEGEND REFER TO DRAWING 120114-E200

SCALE BAR FOR 1:500

NOT FOR TENDER

© COPYRIGHT of this design and plan is the property of ACOR Rudds Consultants Pty Ltd. ACN 054 221 162, all rights reserved. It must not be used, modified, reproduced or copied wholly or in part without written permission from ACOR Rudds Consultants Pty Ltd. ACOR Rudds Consultants is a trademark licensed to ACOR Rudds Consultants Pty Ltd by ACOR Consultants Pty Ltd.

ACOR Rudds Consultants Pty Ltd
Unit 1, 5 Boddalla Place
Fyshwick ACT 2609
T +61 2 6240 2900

ENGINEERS | MANAGERS | INFRASTRUCTURE PLANNERS | DEVELOPMENT CONSULTANTS

Designed A. Bencke	Reviewed / Date M. Vidler 13.11.20	Approved / Date A. Bencke 13.11.20
Drawn J. Thilakasiri	AutocAD Drawing 120114-E216 [04]	

Client
SMEC AUSTRALIA PTY LTD

Project
**WILLIAM HOVELL DRIVE
DUPLICATION**

Drawing Title
**NEW - STREET LIGHTING
SHEET 17
ELECTRICAL SERVICES**

Scale 1:500	Sht Size A1	Drawing No. 120114-E216	Rev. 04
----------------	----------------	-----------------------------------	-------------------