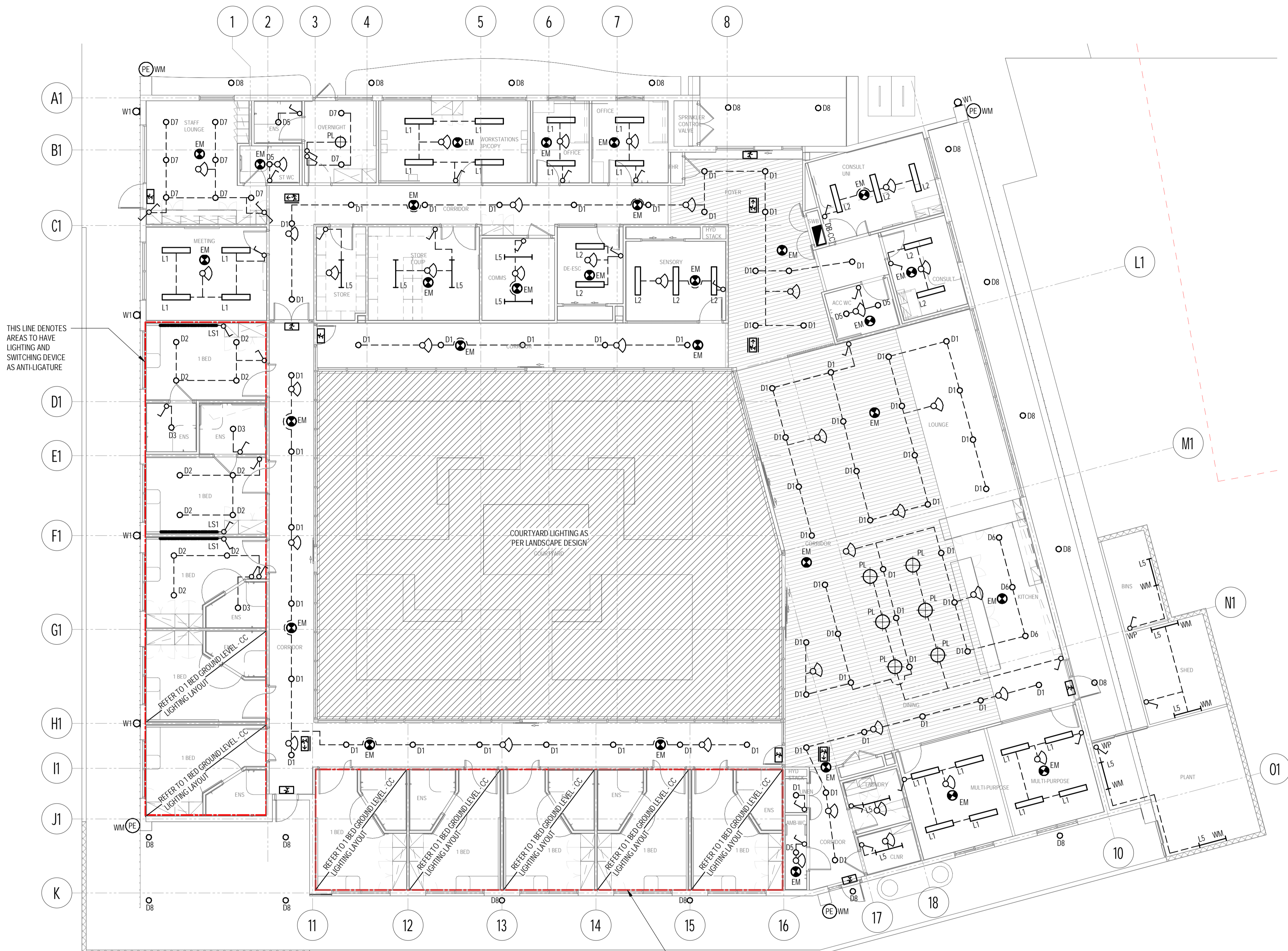


KEYPLAN

NOTES

- FOR LEGEND AND SYMBOLS REFER TO DRAWING E001.
- ALL WORKS TO BE DONE IN ACCORDANCE TO AS/NZS 3000.
- THIS DRAWING TO BE READ IN CONJUNCTION WITH ALL OTHER ELECTRICAL DRAWINGS AND THE SPECIFICATION.
- COORDINATE FINAL LOCATIONS OF ALL LUMINAIRES AND CONTROLS WITH OTHER SERVICES ON SITE TO MECHANICAL, FIRE, HYDRAULICS AND ARCHITECTURAL SERVICES DRAWINGS AS NECESSARY.
- PROVIDE LUMINAIRES AND ASSOCIATED FINAL SUB-CIRCUIT WIRING AS REQUIRED TO COMPLETE THE INSTALLATION.
- PROVIDE COMBINED MCB AND 30MA RCD IN DISTRIBUTION BOARD FOR LIGHTING SUB-CIRCUITS OF 20A OR LESS. BALANCE THE LOAD EQUALLY ACROSS ALL THREE PHASES.
- INTERNAL LUMINAIRES TO BE CONTROLLED BY LOCAL LIGHT SWITCHES, SENSORS AND TIME CLOCK IN ACCORDANCE WITH THE BCA.
- CONNECT ALL EMERGENCY FITTINGS TO THE MANUAL DISCHARGE TEST FACULTY AT EACH DISTRIBUTION BOARD.
- EXTERNAL LIGHTS TO BE CONTROLLED BY PE CELL AND TIMECLOCK C/W AUTOMANUAL SWITCH LOCATED IN THE RELEVANT DISTRIBUTION BOARD.



GROUND LEVEL - CATHOLIC CARE LIGHTING LAYOUT

1 : 100

THIS LINE DENOTES AREAS TO HAVE LIGHTING AND SWITCHING DEVICE AS ANTI-LIGATURE

DRAWING CREATED IN REVIT.

REV	DATE	BY	DESCRIPTION	CHK	APP
P4	07.07.2023	NM	100% PSP	JJ	HH
P3	28.04.2023	NM	80% PSP	JJ	HHKJE
P2	03.03.2023	NM	50% PSP	SG	HH
P1	03.02.2023	MAN	DRAFT 50% PSP	SG	HH
DRAWING STATUS: PRELIMINARY					



Level 2, 121 Marcus Clarke Street, Canberra ACT 2600  
Tel: +61 2 6201 9600 / GPO Box 1551  
<http://www.wsp.com>

CLIENT:



ARCHITECT:



PROJECT:

WATSON HEALTH HUB

TITLE:

ELECTRICAL SERVICES  
CATHOLIC CARE  
LIGHTING LAYOUT

SCALE @ A1:	1:100	CHECKED:	JJ	APPROVED:	HHKJE
PROJECT NUMBER:	PS132290	DRAWN:	MAN	DATE:	JANUARY 2023
DRAWING No:					REV:
E110					P4
© WSP Australia Pty Ltd					