

LEGEND

BOUNDARIES + FENCES

- SITE BOUNDARY
- 1800mm HIGH TREE PROTECTION FENCING

EXISTING VEGETATION

- ⊕ TREES PROPOSED FOR RETENTION
- ⊗ TREES PROPOSED FOR REMOVAL

LANDSCAPE ASSET PROTECTION NOTES

INSTALL 1800mm TALL CONTINUOUS CHAIN MESH FENCE SUPPORTED BY 2400mm TALL STAR STEEL POSTS TO ISOLATE CONSTRUCTION SITE WORKS AND VERGES AS SHOWN ON DRAWING.

ALL FENCING TO BE ERECTED ON COMMENCEMENT OF SITE WORK AND REMOVED AT COMPLETION OF CONSTRUCTION. THE FENCE IS TO REMAIN CONTINUOUS THROUGHOUT THE PROJECT, EXCEPT WHERE APPROVED SERVICE INSTALLATION OCCURS.

EXCAVATE WITH EXTREME CARE WITHIN TREE PROTECTION ZONES (CANOPY + 2m) EXPOSE ROOTS AND CUT ALL ROOTS >50mm DIA BY HAND SAW.

ALL EXPOSED ROOTS ARE TO BE KEPT DAMP (THROUGH WRAPPING IN WET HESSIAN OR SIMILAR) AND BACKFILLED AS SOON AS POSSIBLE.

ANY PRUNING TO REMOVE BRANCHES TO BE IN ACCORDANCE WITH AUSTRALIAN STANDARD 4373 'PRUNING OF AMENITY TREES'.

ALL WORK IS TO BE IN ACCORDANCE WITH ACT GOVERNMENT TCCS MUNICIPAL INFRASTRUCTURE STANDARDS, 2019.

MAKE GOOD ANY DAMAGE TO EXISTING VERGES REINSTATE AS PER THE STANDARD SPECIFICATION.

IT IS THE RESPONSIBILITY OF THE BUILDER TO ENSURE THAT ANY DISTURBANCES TO THE VERGE, TREES, PATHS, KERBS, ROADWAYS OR SERVICES OCCURRING FROM EITHER CONSTRUCTION WORKS OR STORAGE OF MACHINERY/MATERIALS DURING THE CONSTRUCTION.

WORKS ARE RECTIFIED TO THE SATISFACTION OF RELEVANT AUTHORITIES.

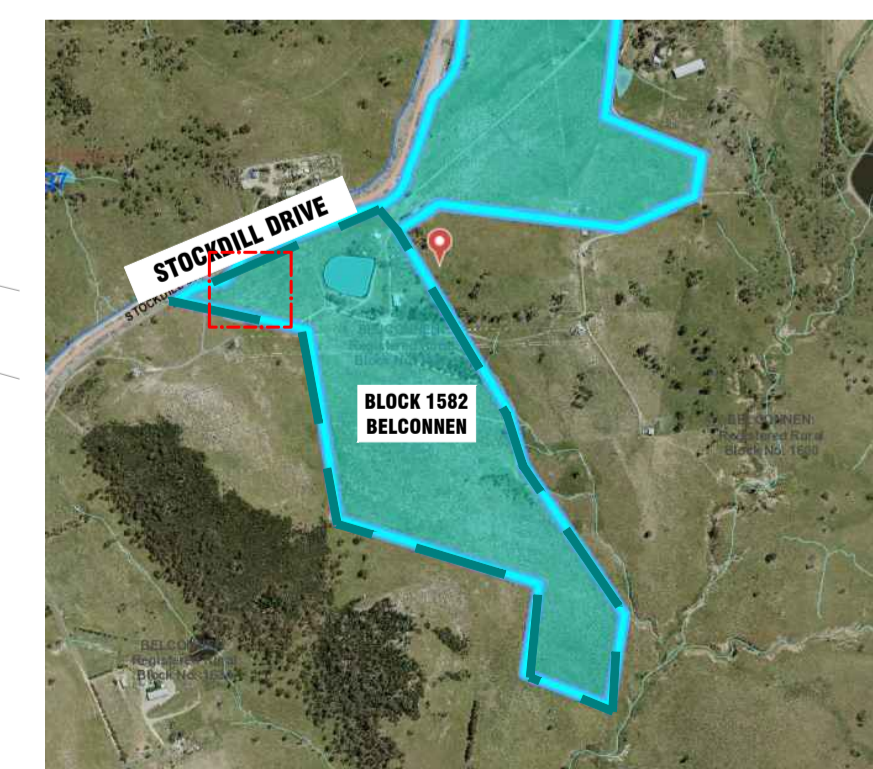
NO CARPARKING OR EQUIPMENT PARKING PERMITTED ON VERGES/OPEN SPACE.

NO SITE SHEDS, STORAGE SHEDS, SITE AMENITIES OR BILLBOARDS TO BE ERECTED ON VERGES.

NO CONSTRUCTION MATERIAL TO BE STORED ON VERGES.

NO WASH DOWN AREA WITHIN TREE PROTECTION ZONES.

KEY PLAN

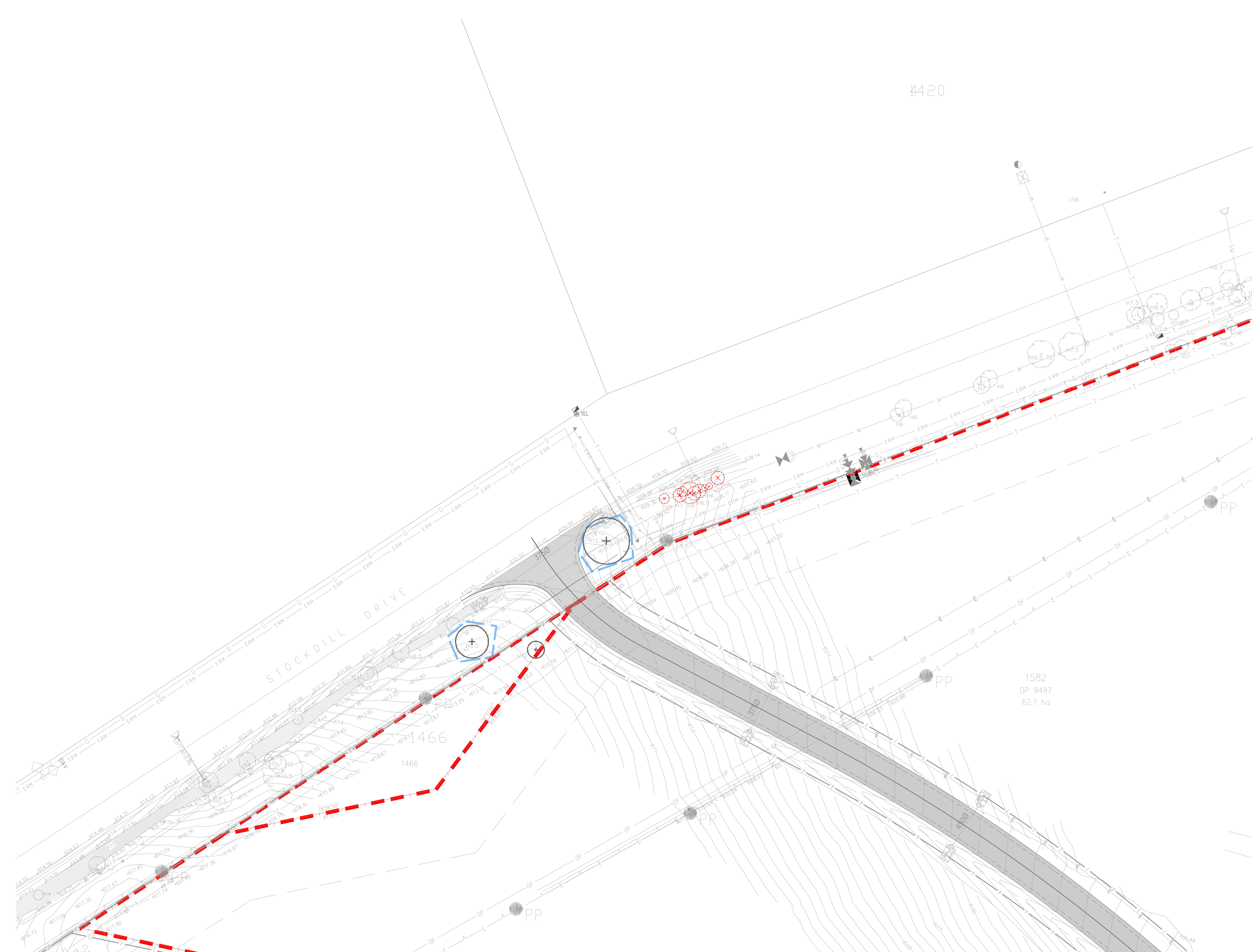


PROJECT
21-321 Canberra Sand & Gravel
Block 1582 Belconnen, ACT

ISSUE
DEVELOPMENT APPLICATION

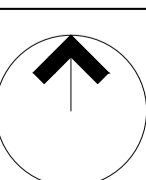
REV.
A

L102.1



4420

1582
DP 9497
62.1 ha



SCALE
1:500 @A1

Notes: Copyright and property of Place Logic Pty Ltd - may be used only for the stated project and issue status, and in accordance with terms of engagement for which it was commissioned. To be read in conjunction with all relevant contracts, specifications, reports, drawings and development approval conditions - obtain any outstanding statutory approvals prior to commencement of works. Use figured dimensions - do not scale from drawings. Dimensions are in metres unless noted otherwise.

REV	DESCRIPTION	DATE	DWN	CHK
A	FOR APPROVAL	08.04.22	MD	SK

CLIENT
Ginninderry

ENGINEER
calibre

CONSULTANT
Place Logic

Urban Design |
Landscape Architecture
www.placelogic.com.au |
ABN 25 619 179 743

LANDSCAPE MANAGEMENT PROTECTION PLAN

PROJECT
21-321 Canberra Sand & Gravel
Block 1582 Belconnen, ACT

ISSUE
DEVELOPMENT APPLICATION

REV.
A

L102.1