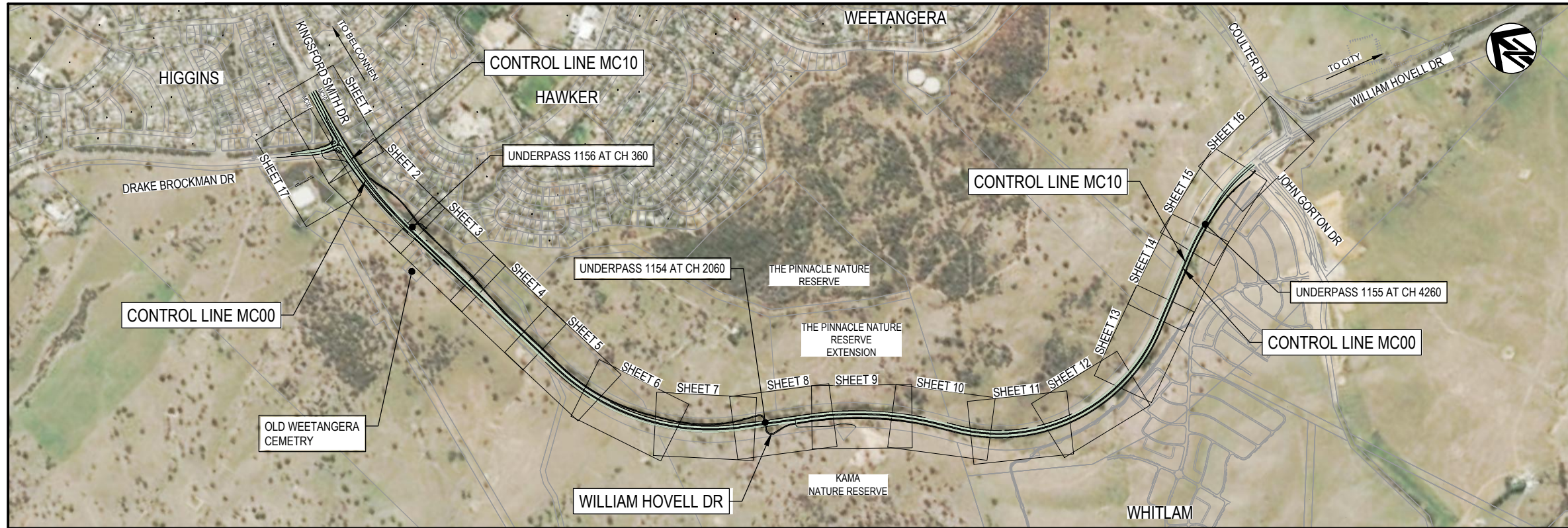
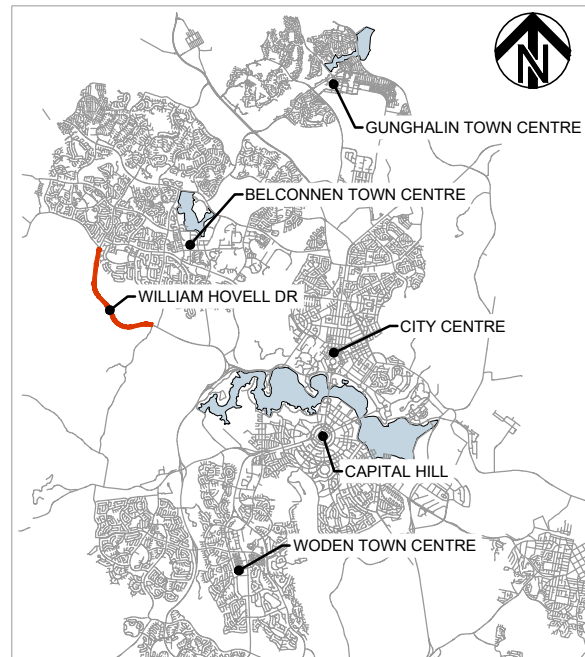


WILLIAM HOVELL DRIVE DUPLICATION PACKAGE 10 PAVEMENT



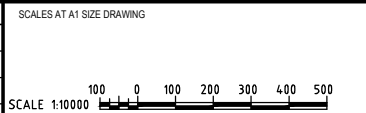
LOCALITY PLAN
SCALE 1:10000



PACKAGE REFERENCES		
PACKAGE 01	INDEX LOCALITY PLAN, GENERAL NOTES, TYPICAL DETAILS AND TYPICAL SECTIONS	GE
PACKAGE 03	GENERAL ARRANGEMENT PLAN	RD
PACKAGE 04	ROAD ALIGNMENT PLAN	RD
PACKAGE 05	LONGITUDINAL SECTIONS	LS
PACKAGE 06	CROSS SECTIONS	XS
PACKAGE 07	DRAINAGE	DD
PACKAGE 08	SEWER AND WATER	WS
PACKAGE 09	UTILITIES - TELECOMMUNICATIONS, ITS, ELECTRICAL	UT
PACKAGE 10	PAVEMENT PLAN , PAVEMENT DETAILS AND SUBSOIL DRAINAGE	PV
PACKAGE 15	LINES AND SIGNS, TCCS TRAFFIC SIGNALS	TC
PACKAGE 17	STRUCTURES	ST
PACKAGE 22	CONSTRUCTION STAGING	CS

150 mm ON ORIGINAL
A1

DRAWING FILE LOCATION / NAME V:_Vault\Projects\3002750\CAD\DWG\10_PV_Pavement\3002750-PV-1700.dwg		PLOT DATE 13 Nov 2020		TIME 10:15:58	
REV	DATE	AMENDMENT / REVISION DESCRIPTION	WVR No.	APPROVAL	TITLE
A	19.06.2020	PRELIMINARY SKETCH PLAN	0007	DK	DRAFTER <i>M.BABU</i>
B	08.10.2020	PRELIMINARY SKETCH PLAN	0014	DK	DRAFTING CHECK <i>R. GOOSEN</i>
C	13.11.2020	PRELIMINARY SKETCH PLAN SUBMISSION	0015	DK	DESIGNER <i>N. GALE</i>
					DESIGN CHECK <i>T. MEADOWS</i>
					PROJECT MANAGER <i>S.RAVEN</i>
					PROJECT DIRECTOR <i>D. KEEP</i>



DESIGNER

SMEC
Member of the Surlana Jurong Group
SMEC AUSTRALIA PTY LTD
© ABN 47 065 475 149
SUITE 2, LEVEL 1, 243 NORTHBOURNE AVENUE
LYNEHAM ACT 2602 AUSTRALIA
SMEC PROJECT No 3002750

CLIENT

ACT
Government
Transport Canberra & City Services

PROJECT TITLE WILLIAM HOVELL DRIVE DUPLICATION	
PAVEMENT COVER SHEET	
SCALE AS SHOWN	PHASE PSP
PROJECT / DRAWING No. 3002750-PV-1700	REVISION C

PRELIMINARY

PAVEMENT NOTES:

- PAVEMENT PROFILES ARE PROVIDED ON DRG 3002487-PD-0001.
- PAVEMENT INTERFACE JOINTS SHALL BE LOCATED OUTSIDE VEHICULAR WHEEL PATHS.
- THE NOMINATED THICKNESS OF A LAYER OF DENSE GRADED ASPHALT MUST BE WITHIN THE LIMITS SPECIFIED IN TCCS SPECIFICATION R116. LAYER THICKNESS SHOULD EXCEED THE MAXIMUM NOMINAL STONE SIZE BY AT LEAST 3.0 TIMES, BUT NO MORE THAN 5 TIMES. NOMINAL LAYER THICKNESS TO BE IN ACCORDANCE WITH TCCS SPECIFICATION R116

NOMINAL AGGREGATE SIZE (mm)	RECOMMENDED THICKNESS (mm)
7	20
10	30
14	45
20	75

- IF UNSUITABLE SUBGRADE MATERIALS IS ENCOUNTERED ONE OF THE FOLLOWING MEASURES ARE TO BE EMPLOYED, SUBJECT TO APPROVAL:

- DRAINAGE AND DRYING OF THE INSITU MATERIAL
- EXCAVATION AND REPLACEMENT OF SOFT MATERIAL WITH SELECT MATERIAL
- STABILISATION OF TOP 300mm SUBGRADE MATERIAL WITH QUICK LIME OR CEMENT
- PROVISION OF A WORKING PLATFORM OF CEMENT TREATED MATERIAL
- USE OF GEOTEXTILES
- ALL WORKS IN ACCORDANCE WITH TCCS SPECIFICATION R44.

- THE AGGREGATE SPREAD RATE AND BINDER APPLICATION RATE FOR SPRAYED SEALS ARE SUBJECT TO CONFIRMATION AT CONSTRUCTION.
- QUICK DRY PRIME (QDP) TO BE CONSTRUCTED TO MANUFACTURERS SPECIFICATIONS
- PRIME, AMC00, AMC4 AND AMC7 TO BE CONSTRUCTED IN ACCORDANCE WITH TCCS SPECIFICATION R106

LEGEND

EXISTING

- CADASTRAL BOUNDARY
- KERB / EDGE OF BITUMEN
- UTILITIES EASEMENT
- ACCESS ROAD BY OTHERS
- STORMWATER HEADWALL MANHOLE & PLANTATION SUMP
- BICENTENNIAL NATIONAL TRAIL

PROPOSED WORKS

- CONSTRUCTION BOUNDARY
- CONTROL LINE
- BARRIER KERB / BARRIER KERB & GUTTER
- BARRIER KERB / BARRIER KERB & GUTTER
- MOUNTABLE KERB / MOUNTABLE KERB & GUTTER
- OPEN CONCRETE INVERT
- ACT 1050 MANHOLE
- ACT TYPE R SUMP (SINGLE / DOUBLE) ACT PLANTATION SUMP (SINGLE / DOUBLE)
- CREEK REALIGNMENT

PROPOSED PAVEMENT

- PAVEMENT TYPE PT-01
- PAVEMENT TYPE PT-2A
- PAVEMENT TYPE PT-2B
- PAVEMENT TYPE PT-03
- PAVEMENT TYPE PT-04
- PAVEMENT TYPE PT-05
- PAVEMENT TYPE PT-6A
- PAVEMENT TYPE PT-6B
- PAVEMENT TYPE PT-7A
- PAVEMENT TYPE PT-7B
- PAVEMENT TYPE PT-7C
- PAVEMENT TYPE PT-08
- PAVEMENT TYPE PT-09

- PAVEMENT TYPE TAG
- INTERFACE DETAIL TAG
- EDGE DETAIL TAG

PROPOSED SUBSURFACE DRAINAGE

- TRENCH DRAIN
- PARALLEL DRAIN
- INTERFACE DRAIN
- START OF SUBSURFACE DRAINAGE (HIGH END/INTERMEDIATE RISER FLUSHING POINT)
- SUBSURFACE DRAINAGE HEADWALL OUTLET

150 mm ON ORIGINAL
A1

DRAWING FILE LOCATION / NAME V:_Vault\Projects\3002750\CAD\DWG\10_PV_Pavement\3002750-PV-1701.dwg	PLOT DATE 13 Nov 2020	TIME 10:16:29
---	--------------------------	------------------

REV	DATE	AMENDMENT / REVISION DESCRIPTION	WVR No.	APPROVAL	TITLE	NAME
A	19.06.2020	PRELIMINARY SKETCH PLAN	0007	DK	DRAFTER	M.BABU
B	08.10.2020	PRELIMINARY SKETCH PLAN	0014	DK	DRAFTING CHECK	R. GOOSEN
C	13.11.2020	PRELIMINARY SKETCH PLAN SUBMISSION	0015	DK	DESIGNER	N. GALE
					DESIGN CHECK	T. MEADOWS
					PROJECT MANAGER	S.RAVEN
					PROJECT DIRECTOR	D. KEEP

SCALES AT A1 SIZE DRAWING

DESIGNER



SMEC
Member of the Surbana Jurong Group
SMEC AUSTRALIA PTY LTD
© ABN 47 065 475 149
SUITE 2, LEVEL 1, 243 NORTHBOURNE AVENUE
LYNEHAM ACT 2602 AUSTRALIA
SMEC PROJECT No 3002750

CLIENT

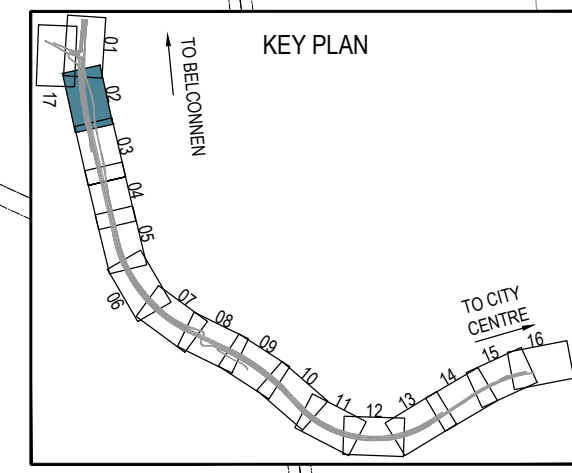
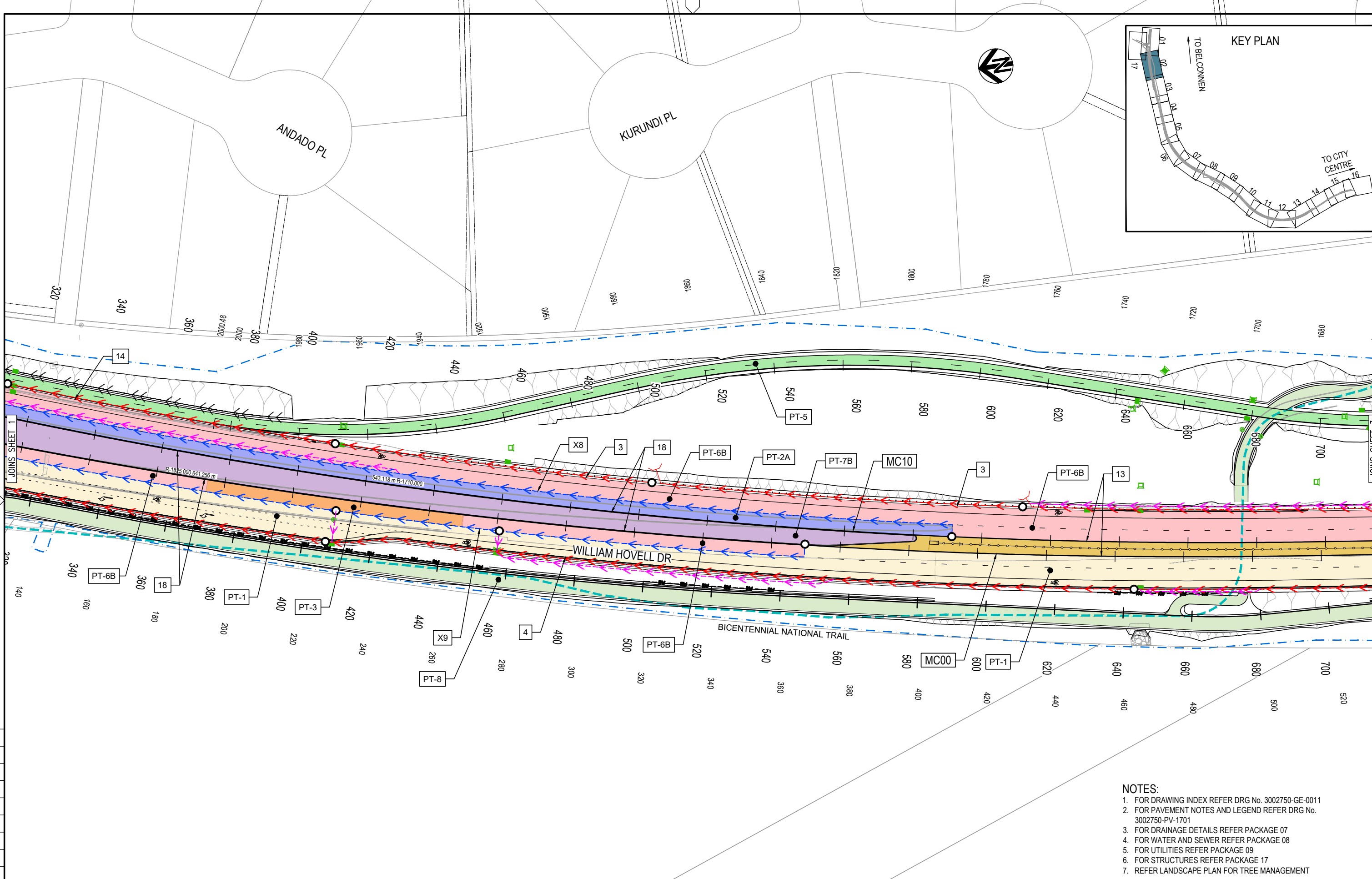


ACT
Government
Transport Canberra & City Services

PROJECT TITLE WILLIAM HOVELL DRIVE DUPLICATION	SCALE AS SHOWN	PHASE PSP	PROJECT / DRAWING No. 3002750-PV-1701	REVISION C
---	-------------------	--------------	--	---------------

PRELIMINARY

PAVEMENT NOTES AND LEGEND



- NOTES:**
1. FOR DRAWING INDEX REFER DRG No. 3002750-GE-0011
 2. FOR PAVEMENT NOTES AND LEGEND REFER DRG No. 3002750-PV-1701
 3. FOR DRAINAGE DETAILS REFER PACKAGE 07
 4. FOR WATER AND SEWER REFER PACKAGE 08
 5. FOR UTILITIES REFER PACKAGE 09
 6. FOR STRUCTURES REFER PACKAGE 17
 7. REFER LANDSCAPE PLAN FOR TREE MANAGEMENT

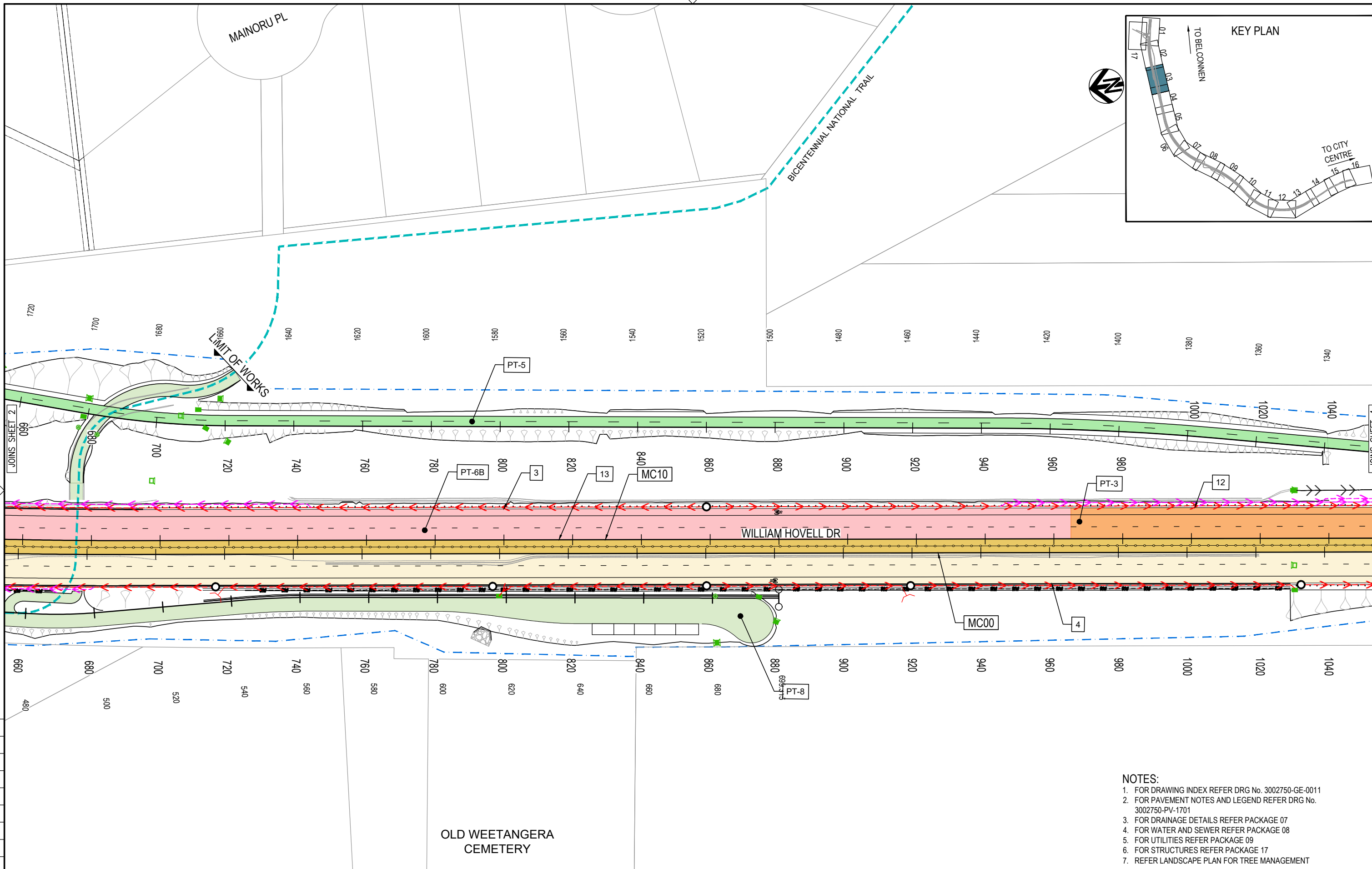
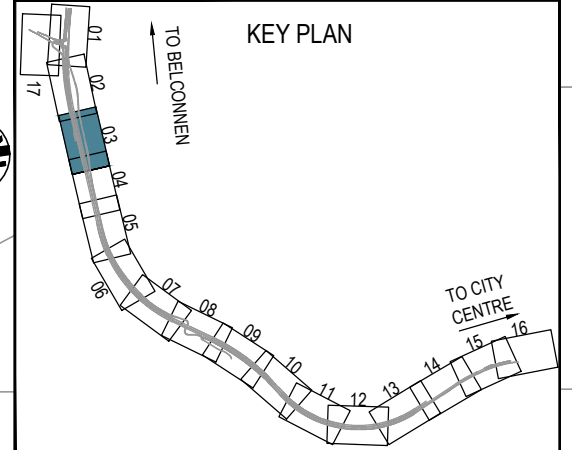
PRELIMINARY

150 mm ON ORIGINAL

DRAWING FILE LOCATION / NAME V:\Vault\Projects\3002750\CAD\DWG\10_PV_Pavement\3002750-PV-1711.dwg		PLOT DATE 13 Nov 2020		TIME 10:17:30				
EXTERNAL REFERENCE FILES		REV	DATE	AMENDMENT / REVISION DESCRIPTION	WVR No.	APPROVAL	TITLE	NAME
<ul style="list-style-type: none"> X:\WIND_FRAME_500 X:\3002750_SMEC_A1 X:\WIND_FRAME_500 X:\WIND_DES_CAD X:\WIND_DES_CTRL_500 X:\WIND_DES_PATH X:\WIND_DES_NAME X:\WIND_DES_WP X:\WIND_DES_BURY X:\WIND_DES_PV X:\WIND_DES_DRN X:\WIND_DES_PAV X:\WIND_DES_SWLX X:\WIND_DES_DB X:\WIND_DES_BRTX X:\WIND_DES_LV 		A	19.06.2020	PRELIMINARY SKETCH PLAN	0007	DK	DRAFTER	M.BABU
		B	08.10.2020	PRELIMINARY SKETCH PLAN	0014	DK	DRAFTING CHECK	R. GOOSEN
		C	13.11.2020	PRELIMINARY SKETCH PLAN SUBMISSION	0015	DK	DESIGNER	N. GALE
							DESIGN CHECK	T. MEADOWS
							PROJECT MANAGER	S. RAVEN
							PROJECT DIRECTOR	D. KEEP
		SCALES AT A1 SIZE DRAWING		SCALE 1:500				DESIGNER SMEC Member of the Surbana Jurong Group SMEC AUSTRALIA PTY LTD ABN 47 065 475 149 SUITE 2, LEVEL 1, 243 NORTHBOURNE AVENUE LYNEHAM ACT 2602 AUSTRALIA SMEC PROJECT No 3002750
		CLIENT		ACT Government Transport Canberra & City Services		PROJECT TITLE		WILLIAM HOVELL DRIVE DUPLICATION
		SCALE		AS SHOWN		PHASE		PSP
		PROJECT / DRAWING No.		3002750-PV-1711		REVISION		C

MAINORU PL

BICENTENNIAL NATIONAL TRAIL



- NOTES:**
1. FOR DRAWING INDEX REFER DRG No. 3002750-GE-0011
 2. FOR PAVEMENT NOTES AND LEGEND REFER DRG No. 3002750-PV-1701
 3. FOR DRAINAGE DETAILS REFER PACKAGE 07
 4. FOR WATER AND SEWER REFER PACKAGE 08
 5. FOR UTILITIES REFER PACKAGE 09
 6. FOR STRUCTURES REFER PACKAGE 17
 7. REFER LANDSCAPE PLAN FOR TREE MANAGEMENT

OLD WEETANGERA CEMETERY

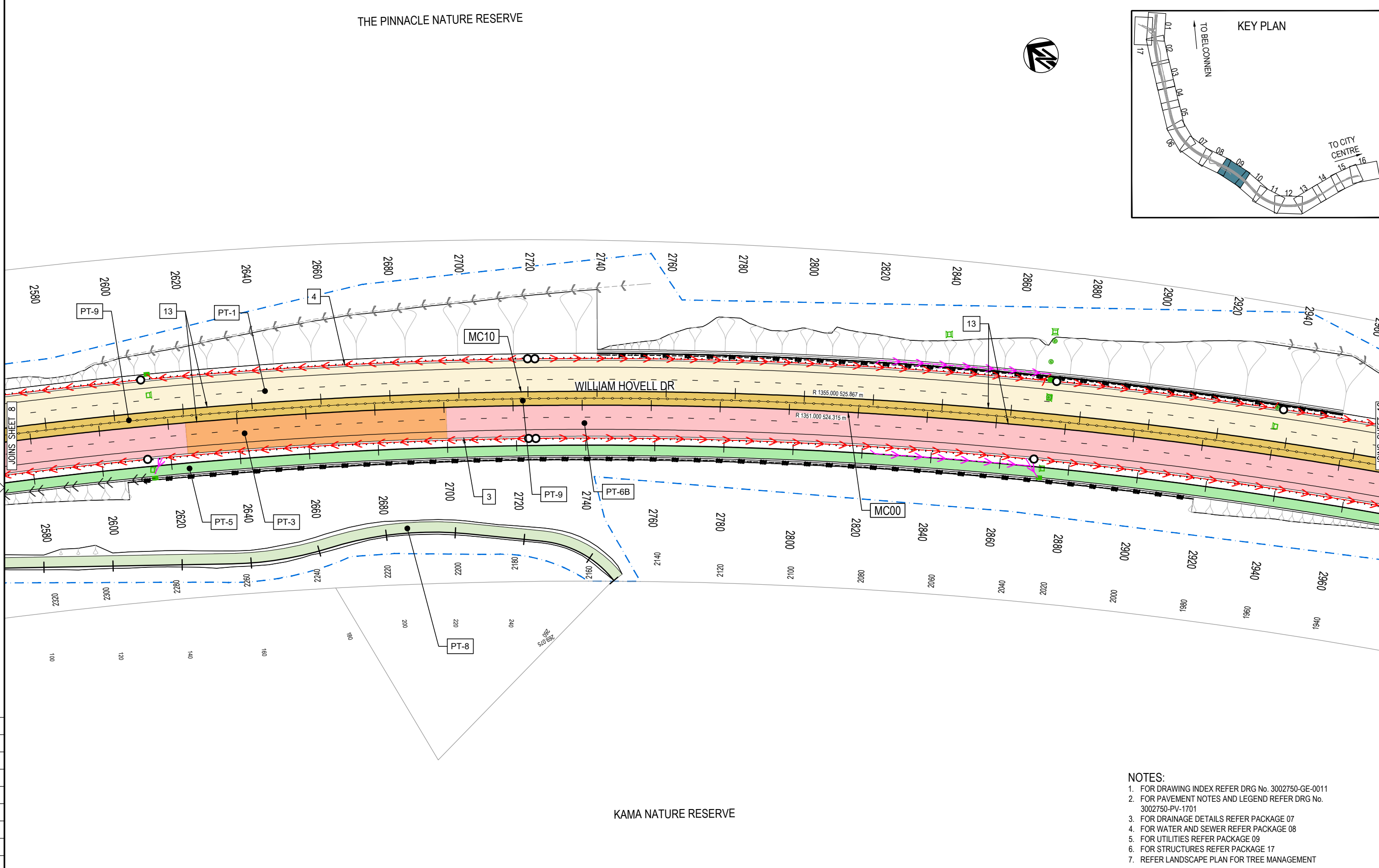
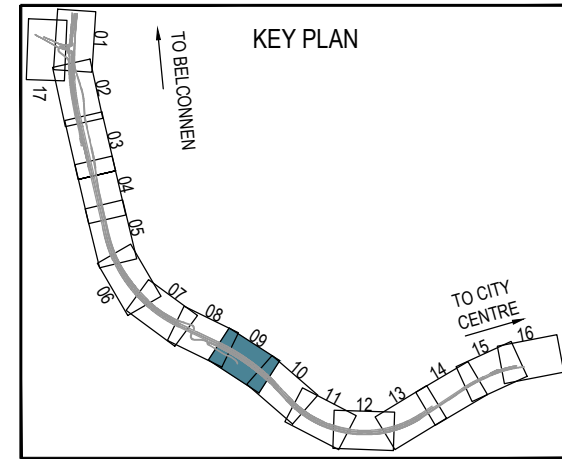
PRELIMINARY

DRAWING FILE LOCATION / NAME V:\Vault\Projects\3002750\CAD\DWG\10_PV_Pavement\3002750-PV-1712.dwg		PLOT DATE 13 Nov 2020		TIME 10:18:03	
EXTERNAL REFERENCE FILES		REV	DATE	AMENDMENT / REVISION DESCRIPTION	
<ul style="list-style-type: none"> X:\WIND_FRAME_500 X:\3002750_SMEC_A1 X:\WIND_DES_CAD X:\WIND_DES_CTRL_500 X:\WIND_DES_PATH X:\WIND_DES_NAME X:\WIND_WP X:\WIND_DES_BURY X:\WIND_DES_PAV X:\WIND_NOTE_PV X:\WIND_PAV X:\WIND_SHT_TXT_PV X:\WIND_SHT_EX X:\WIND_DS1B X:\WIND_DS1X X:\WIND_DS1Y X:\WIND_ENV 		A	19.06.2020	PRELIMINARY SKETCH PLAN	
		B	08.10.2020	PRELIMINARY SKETCH PLAN	
		C	13.11.2020	PRELIMINARY SKETCH PLAN SUBMISSION	
WVR No.		APPROVAL	TITLE	NAME	
0007		DK	DRAFTER	M. BABU	
0014		DK	DRAFTING CHECK	R. GOOSEN	
0015		DK	DESIGNER	N. GALE	
			DESIGN CHECK	T. MEADOWS	
			PROJECT MANAGER	S. RAVEN	
			PROJECT DIRECTOR	D. KEEP	
SCALES AT A1 SIZE DRAWING		DESIGNER		CLIENT	
SCALE 1:500		 SMEC Member of the Surlana Jurong Group SMEC AUSTRALIA PTY LTD © ABN 47 065 475 149 SUITE 2, LEVEL 1, 243 NORTHBOURNE AVENUE LYNEHAM ACT 2602 AUSTRALIA SMEC PROJECT No 3002750		 ACT Government Transport Canberra & City Services	
PROJECT TITLE		WILLIAM HOVELL DRIVE DUPLICATION			
PAVEMENT PLAN SHEET 3					
SCALE	PHASE	PROJECT / DRAWING No.		REVISION	
AS SHOWN	PSP	3002750-PV-1712		C	

150 mm ON ORIGINAL

A1

THE PINNACLE NATURE RESERVE



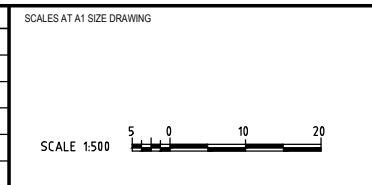
KAMA NATURE RESERVE

- NOTES:**
1. FOR DRAWING INDEX REFER DRG No. 3002750-GE-0011
 2. FOR PAVEMENT NOTES AND LEGEND REFER DRG No. 3002750-PV-1701
 3. FOR DRAINAGE DETAILS REFER PACKAGE 07
 4. FOR WATER AND SEWER REFER PACKAGE 08
 5. FOR UTILITIES REFER PACKAGE 09
 6. FOR STRUCTURES REFER PACKAGE 17
 7. REFER LANDSCAPE PLAN FOR TREE MANAGEMENT

PRELIMINARY

DRAWING FILE LOCATION / NAME V:\Vault\Projects\3002750\CAD\DWG\10_PV_Pavement\3002750-PV-1718.dwg		PLOT DATE 13 Nov 2020		TIME 10:21:12	
REV	DATE	AMENDMENT / REVISION DESCRIPTION	WVR No.	APPROVAL	TITLE
A	19.06.2020	PRELIMINARY SKETCH PLAN	0007	DK	DRAFTER <i>M.BABU</i>
B	08.10.2020	PRELIMINARY SKETCH PLAN	0014	DK	DRAFTING CHECK <i>R. GOOSEN</i>
C	13.11.2020	PRELIMINARY SKETCH PLAN SUBMISSION	0015	DK	DESIGNER <i>N. GALE</i>
					DESIGN CHECK <i>T. MEADOWS</i>
					PROJECT MANAGER <i>S.RAVEN</i>
					PROJECT DIRECTOR <i>D. KEEP</i>

EXTERNAL REFERENCE FILES	REV	DATE	AMENDMENT / REVISION DESCRIPTION	WVR No.	APPROVAL	TITLE	NAME
X:\WD_FRAME_500 X:\3002750_SMEC_A1 X:\WD_FRAME_500 X:\WD_DES_CAD X:\WD_DES_CTRL_500 X:\WD_DES_PATH X:\WD_DES_NAME X:\WD_DES_WP X:\WD_DES_BURY X:\WD_DES_PAV X:\WD_DES_PV X:\WD_SHT_TXT_PV X:\WD_SHT_TXT_PV X:\WD_SHT_EX X:\WD_SHT_EX X:\WD_BDRYX							



DESIGNER

SMEC
Member of the Surlana Jurong Group
SMEC AUSTRALIA PTY LTD
© ABN 47 065 475 149
SUITE 2, LEVEL 1, 243 NORTHBOURNE AVENUE
LYNEHAM ACT 2602 AUSTRALIA
SMEC PROJECT No 3002750

CLIENT

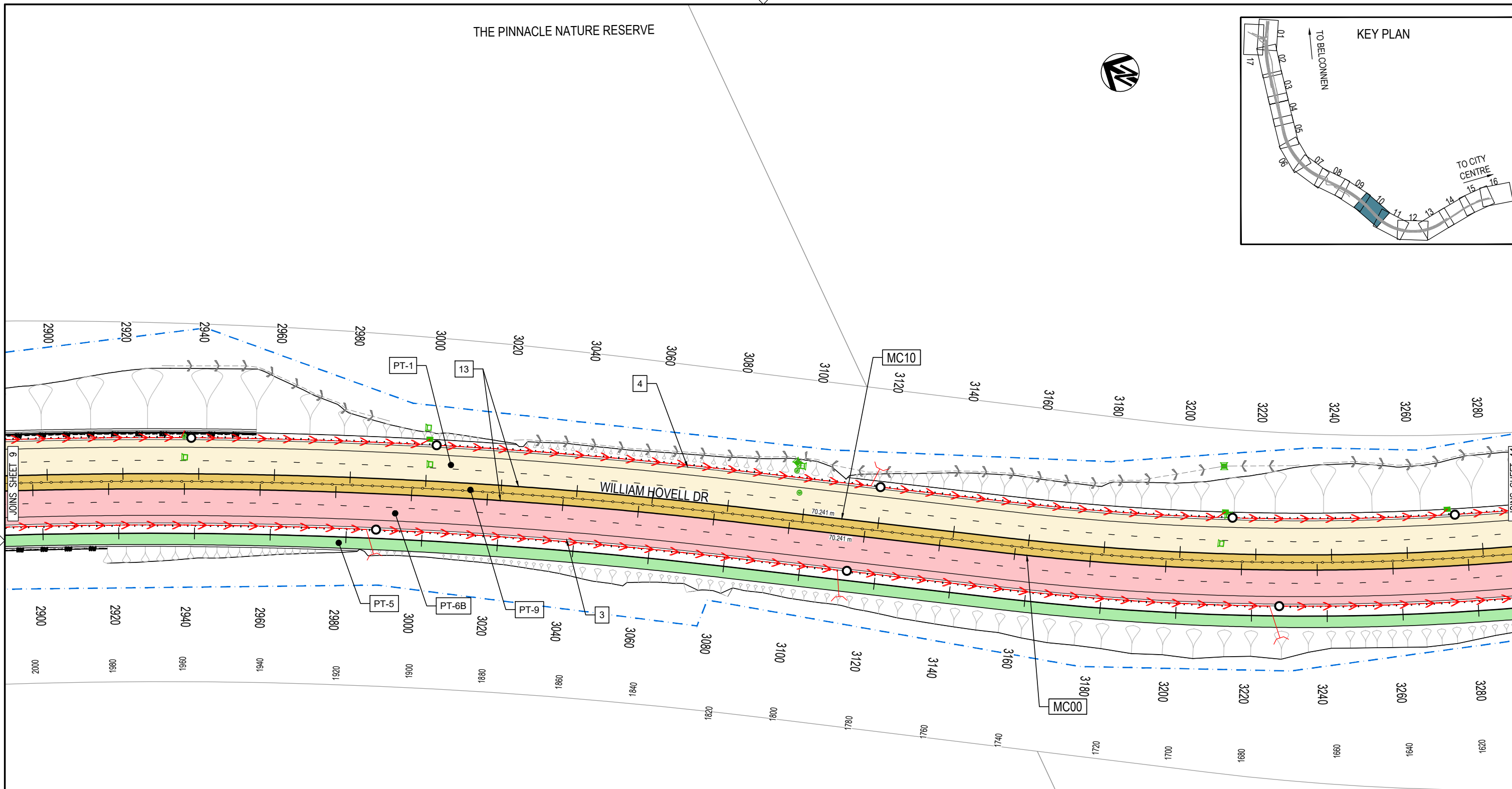
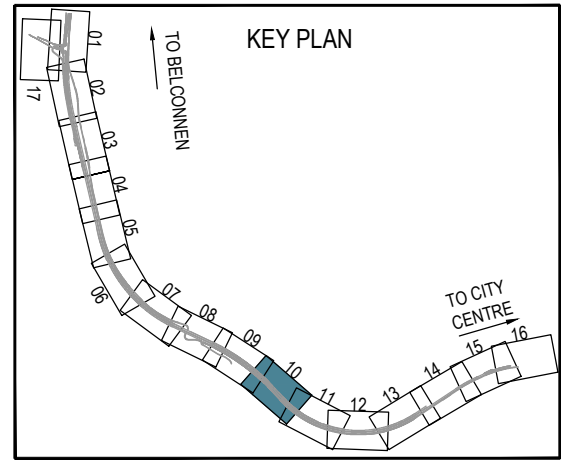
ACT
Government
Transport Canberra & City Services

PROJECT TITLE WILLIAM HOVELL DRIVE DUPLICATION		PROJECT / DRAWING No. 3002750-PV-1718		REVISION C
SCALE AS SHOWN	PHASE PSP			

150 mm ON ORIGINAL

A1

THE PINNACLE NATURE RESERVE



KAMA NATURE RESERVE

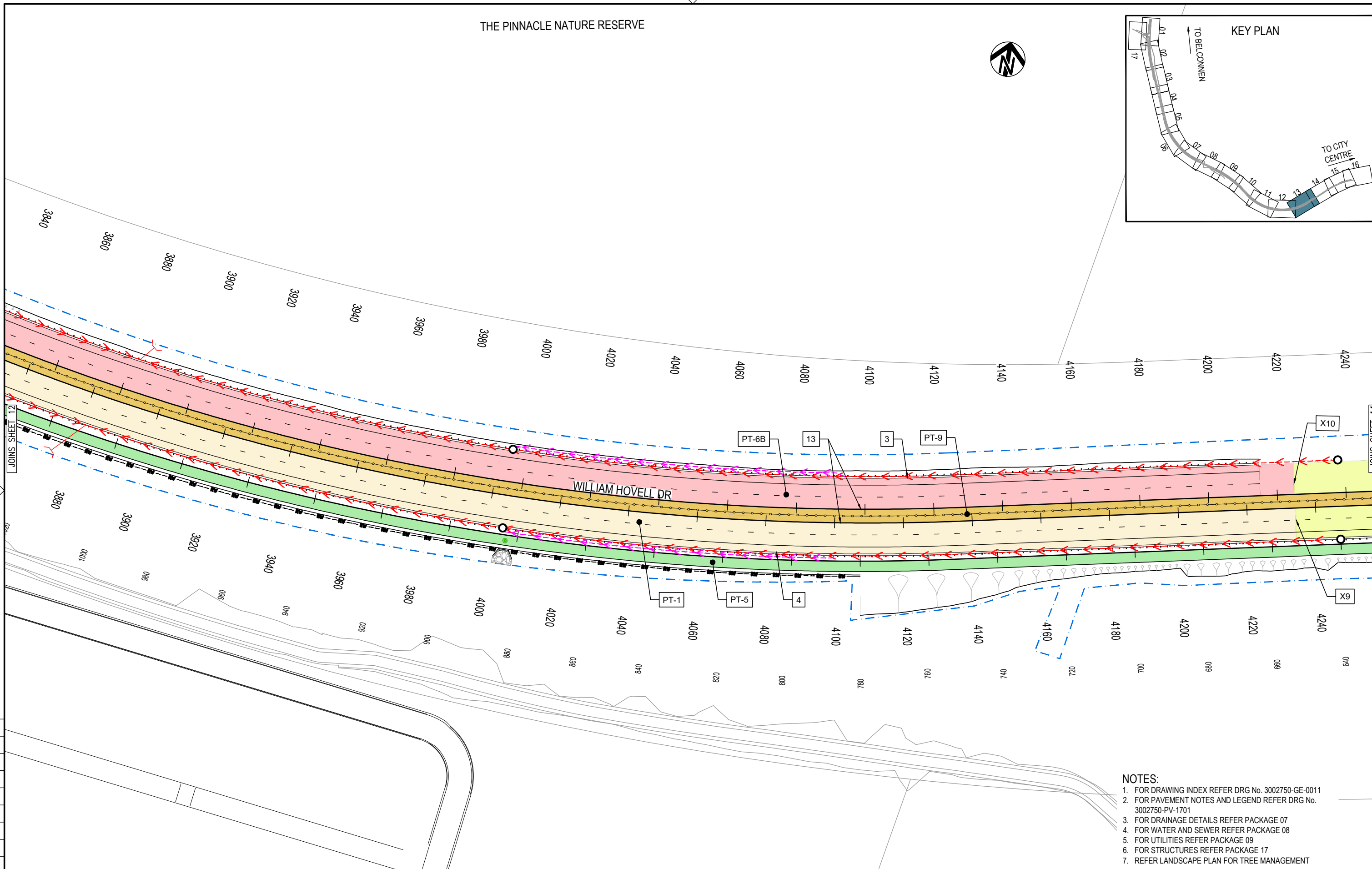
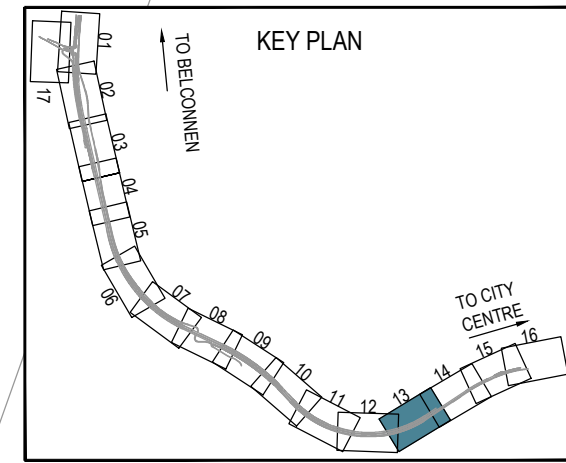
- NOTES:**
1. FOR DRAWING INDEX REFER DRG No. 3002750-GE-0011
 2. FOR PAVEMENT NOTES AND LEGEND REFER DRG No. 3002750-PV-1701
 3. FOR DRAINAGE DETAILS REFER PACKAGE 07
 4. FOR WATER AND SEWER REFER PACKAGE 08
 5. FOR UTILITIES REFER PACKAGE 09
 6. FOR STRUCTURES REFER PACKAGE 17
 7. REFER LANDSCAPE PLAN FOR TREE MANAGEMENT

PRELIMINARY

150 mm ON ORIGINAL

DRAWING FILE LOCATION / NAME V:\Vault\Projects\3002750\CAD\DWG\10_PV_Pavement\3002750-PV-1719.dwg		PLOT DATE 13 Nov 2020		TIME 10:21:43	
EXTERNAL REFERENCE FILES		REV	DATE	AMENDMENT / REVISION DESCRIPTION	WVR No.
<ul style="list-style-type: none"> X:\WIND_FRAME_500 X:\3002750_SMEC_A1 X:\WIND_DES_CAD X:\WIND_DES_CTRL_500 X:\WIND_DES_PATH X:\WIND_DES_NAME X:\WIND_DES_WP X:\WIND_DES_BURY X:\WIND_DES_BURY X:\WIND_SHT_TXT_PV X:\WIND_SHT_TXT_PV X:\WIND_DRN X:\WIND_SW_EX X:\WIND_SLSB X:\WIND_BDRYX 		A	19.06.2020	PRELIMINARY SKETCH PLAN	0007
		B	08.10.2020	PRELIMINARY SKETCH PLAN	0014
		C	13.11.2020	PRELIMINARY SKETCH PLAN SUBMISSION	0015
		APPROVAL	TITLE	NAME	
		DK	DRAFTER	M. BABU	
		DK	DRAFTING CHECK	R. GOOSEN	
		DK	DESIGNER	N. GALE	
			DESIGN CHECK	T. MEADOWS	
			PROJECT MANAGER	S. RAVEN	
			PROJECT DIRECTOR	D. KEEP	
SCALES AT A1 SIZE DRAWING		<p>SCALE 1:500</p>			
DESIGNER		<p>SMEC Member of the Surbana Jurong Group SMEC AUSTRALIA PTY LTD © ABN 47 065 475 149 SUITE 2, LEVEL 1, 243 NORTHBOURNE AVENUE LYNEHAM ACT 2602 AUSTRALIA SMEC PROJECT No 3002750</p>			
CLIENT		<p>ACT Government Transport Canberra & City Services</p>			
PROJECT TITLE		WILLIAM HOVELL DRIVE DUPLICATION			
		PAVEMENT PLAN SHEET 10			
SCALE	PHASE	PROJECT / DRAWING No.		REVISION	
AS SHOWN	PSP	3002750-PV-1719		C	

THE PINNACLE NATURE RESERVE

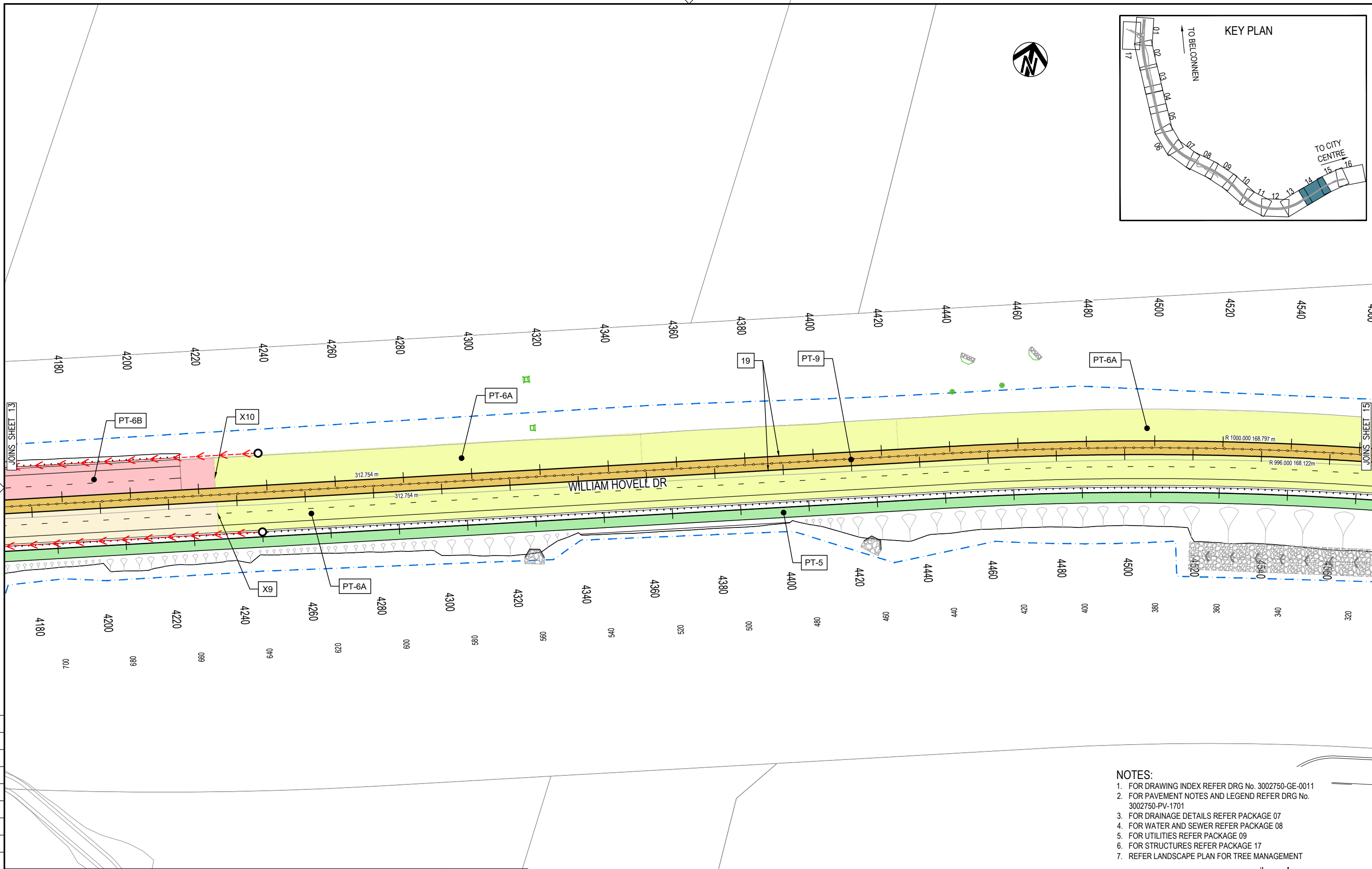
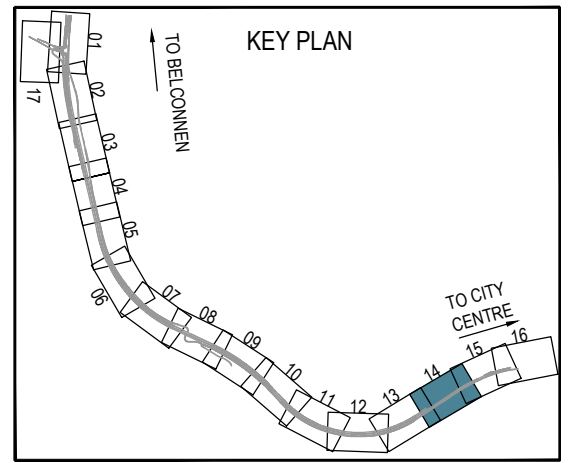


- NOTES:**
1. FOR DRAWING INDEX REFER DRG No. 3002750-GE-0011
 2. FOR PAVEMENT NOTES AND LEGEND REFER DRG No. 3002750-PV-1701
 3. FOR DRAINAGE DETAILS REFER PACKAGE 07
 4. FOR WATER AND SEWER REFER PACKAGE 08
 5. FOR UTILITIES REFER PACKAGE 09
 6. FOR STRUCTURES REFER PACKAGE 17
 7. REFER LANDSCAPE PLAN FOR TREE MANAGEMENT

PRELIMINARY

150 mm ON ORIGINAL

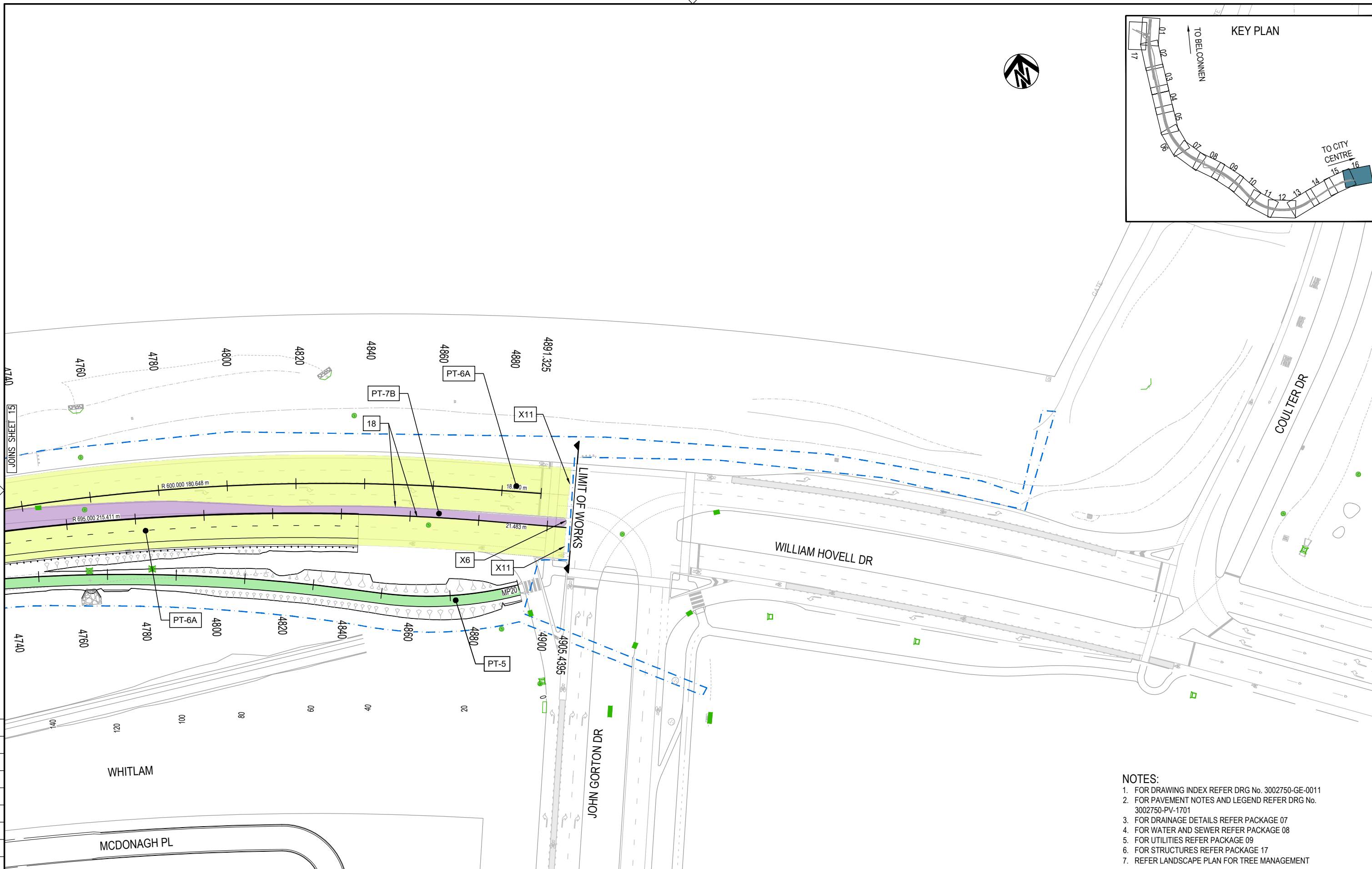
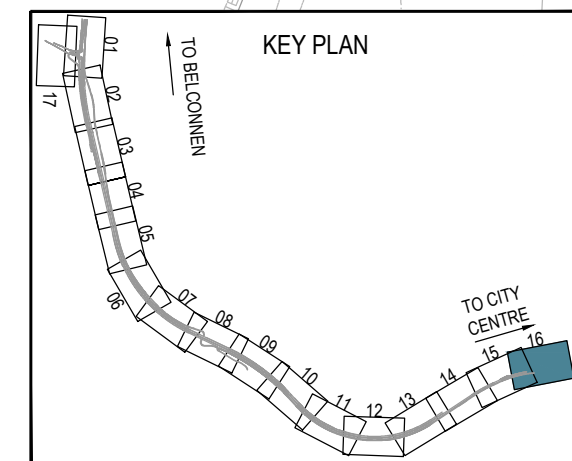
DRAWING FILE LOCATION / NAME V:_Vault\Projects\3002750\CAD\DWG\10_PV_Pavement\3002750-PV-1722.dwg		PLOT DATE 13 Nov 2020		TIME 10:23:19	
EXTERNAL REFERENCE FILES		REV	DATE	AMENDMENT / REVISION DESCRIPTION	
X:_FRAME_500 X:_3002750_SMEC_A1 X:_PLOT_SETUP X:_WIND_DES_CAD X:_WIND_DES_CTRL_500 X:_WIND_DES_PATH X:_WIND_DES_NAME X:_WIND_DES_WP X:_WIND_DES_BURY X:_WIND_DES_TKT_PV X:_WIND_SHT_TXT_PV X:_WIND_DRN X:_WIND_SW_EX X:_WIND_DSLSB X:_WIND_BDRYX		A	19.06.2020	PRELIMINARY SKETCH PLAN	
		B	08.10.2020	PRELIMINARY SKETCH PLAN	
		C	13.11.2020	PRELIMINARY SKETCH PLAN SUBMISSION	
WVR No. APPROVAL TITLE NAME 0007 DK DRAFTER M.BABU 0014 DK DRAFTING CHECK R. GOOSEN 0015 DK DESIGNER N. GALE DESIGN CHECK T. MEADOWS PROJECT MANAGER S.RAVEN PROJECT DIRECTOR D. KEEP		SCALES AT A1 SIZE DRAWING SCALE 1:500		DESIGNER SMEC Member of the Surbana Jurong Group SMEC AUSTRALIA PTY LTD © ABN 47 065 475 149 SUITE 2, LEVEL 1, 243 NORTHBOURNE AVENUE LYNEHAM ACT 2602 AUSTRALIA SMEC PROJECT No 3002750	
CLIENT ACT Government Transport Canberra & City Services		PROJECT TITLE WILLIAM HOVELL DRIVE DUPLICATION PAVEMENT PLAN SHEET 13		SCALE AS SHOWN PHASE PSP PROJECT / DRAWING No. 3002750-PV-1722 REVISION C	



- NOTES:**
1. FOR DRAWING INDEX REFER DRG No. 3002750-GE-0011
 2. FOR PAVEMENT NOTES AND LEGEND REFER DRG No. 3002750-PV-1701
 3. FOR DRAINAGE DETAILS REFER PACKAGE 07
 4. FOR WATER AND SEWER REFER PACKAGE 08
 5. FOR UTILITIES REFER PACKAGE 09
 6. FOR STRUCTURES REFER PACKAGE 17
 7. REFER LANDSCAPE PLAN FOR TREE MANAGEMENT

PRELIMINARY

DRAWING FILE LOCATION / NAME V:\Vault\Projects\3002750\CAD\DWG\10_PV_Pavement\3002750-PV-1723.dwg		PLOT DATE 13 Nov 2020		TIME 10:23:51									
EXTERNAL REFERENCE FILES		REV	DATE	AMENDMENT / REVISION DESCRIPTION		WVR No.	APPROVAL	TITLE	NAME	SCALES AT A1 SIZE DRAWING	DESIGNER	CLIENT	PROJECT TITLE
X:\FRAME_500 X:\3002750_SMEC_A1 X:\WIND_DES_CAD X:\WIND_DES_CTRL_500 X:\WIND_DES_PATH X:\WIND_DES_NAME X:\WIND_WP X:\WIND_DES_BURY X:\WIND_SHT_TXT_PV X:\WIND_DRN X:\WIND_SW_EX X:\WIND_DSLSB X:\WIND_BDRYX		A	19.06.2020	PRELIMINARY SKETCH PLAN		0007	DK	DRAFTER	M.BABU	SCALES AT A1 SIZE DRAWING SCALE 1:500	 SMEC Member of the Surbana Jurong Group SMEC AUSTRALIA PTY LTD ABN 47 065 475 149 SUITE 2, LEVEL 1, 243 NORTHBOURNE AVENUE LYNEHAM ACT 2602 AUSTRALIA SMEC PROJECT No 3002750	 ACT Government Transport Canberra & City Services	WILLIAM HOVELL DRIVE DUPLICATION PAVEMENT PLAN SHEET 14
		B	08.10.2020	PRELIMINARY SKETCH PLAN		0014	DK	DRAFTING CHECK	R. GOOSEN				
		C	13.11.2020	PRELIMINARY SKETCH PLAN SUBMISSION		0015	DK	DESIGNER	N. GALE				
								DESIGN CHECK	T. MEADOWS				
								PROJECT MANAGER	S. RAVEN				
								PROJECT DIRECTOR	D. KEEP	SCALE	PHASE	PROJECT / DRAWING No.	REVISION
										AS SHOWN	PSP	3002750-PV-1723	C

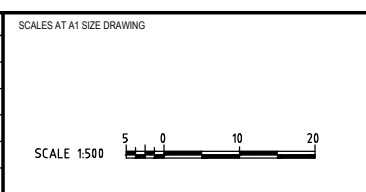


- NOTES:**
1. FOR DRAWING INDEX REFER DRG No. 3002750-GE-0011
 2. FOR PAVEMENT NOTES AND LEGEND REFER DRG No. 3002750-PV-1701
 3. FOR DRAINAGE DETAILS REFER PACKAGE 07
 4. FOR WATER AND SEWER REFER PACKAGE 08
 5. FOR UTILITIES REFER PACKAGE 09
 6. FOR STRUCTURES REFER PACKAGE 17
 7. REFER LANDSCAPE PLAN FOR TREE MANAGEMENT

PRELIMINARY

DRAWING FILE LOCATION / NAME V:\Vault\Projects\3002750\CAD\DWG\10_PV_Pavement\3002750-PV-1725.dwg		PLOT DATE 13 Nov 2020	TIME 10:24:54
EXTERNAL REFERENCE FILES	REV	DATE	AMENDMENT / REVISION DESCRIPTION
	A	19.06.2020	PRELIMINARY SKETCH PLAN
	B	08.10.2020	PRELIMINARY SKETCH PLAN
	C	13.11.2020	PRELIMINARY SKETCH PLAN SUBMISSION

WVR No.	APPROVAL	TITLE	NAME
0007	DK	DRAFTER	M. BABU
0014	DK	DRAFTING CHECK	R. GOOSEN
0015	DK	DESIGNER	N. GALE
		DESIGN CHECK	T. MEADOWS
		PROJECT MANAGER	S. RAVEN
		PROJECT DIRECTOR	D. KEEP



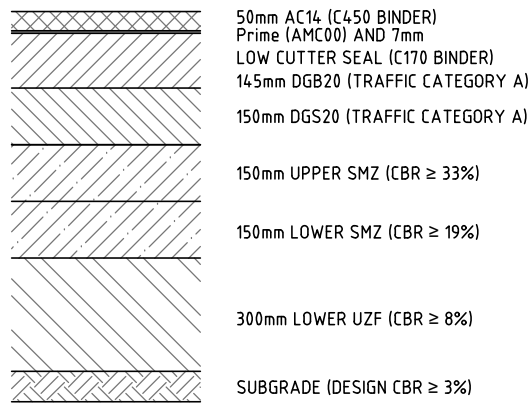
DESIGNER

SMEC
Member of the Surlana Jurong Group
SMEC AUSTRALIA PTY LTD
© ABN 47 065 475 149
SUITE 2, LEVEL 1, 243 NORTHBOURNE AVENUE
LYNEHAM ACT 2602 AUSTRALIA
SMEC PROJECT No 3002750

CLIENT

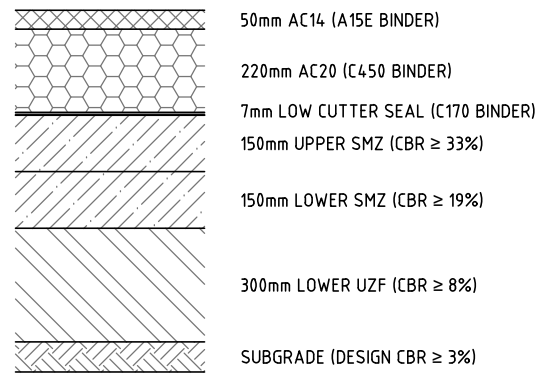
ACT
Government
Transport Canberra & City Services

PROJECT TITLE WILLIAM HOVELL DRIVE DUPLICATION		PROJECT / DRAWING No. 3002750-PV-1725	REVISION C
SCALE AS SHOWN	PHASE PSP		



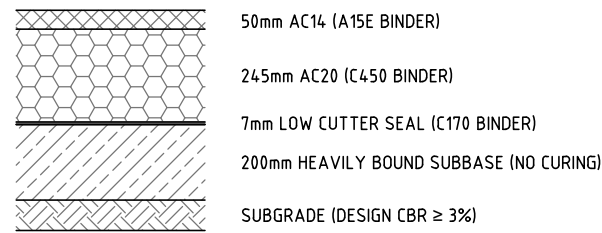
PT-1

**PAVEMENT TYPE 1
MAIN CARRIAGEWAY
WILLIAM HOVELL DRIVE**
THIN ASPHALT OVER
HEAVY-DUTY
GRANULAR MATERIAL



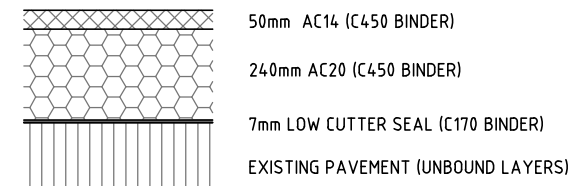
PT-2A

**PAVEMENT TYPE 2A
INTERSECTIONS
WILLIAM HOVELL DRIVE**
FULL DEPTH ASPHALT



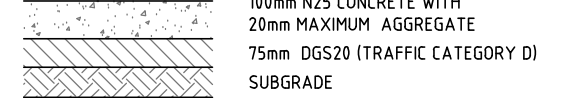
PT-2B

**PAVEMENT TYPE 2B
INTERSECTIONS
WILLIAM HOVELL DRIVE**
THICK ASPHALT OVER
HEAVILY BOUND SUBBASE
(NO CURING)



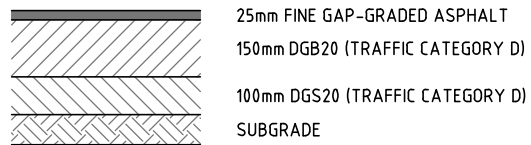
PT-3

**PAVEMENT TYPE 3
MAIN CARRIAGEWAY
WILLIAM HOVELL DRIVE**
ASPHALT INLAY
(HEAVY PATCHING)



PT-4

**PAVEMENT TYPE 4
PEDESTRIAN PATH**



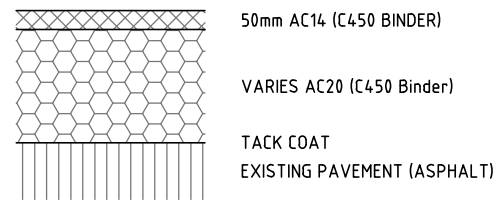
PT-5

**PAVEMENT TYPE 5
SHARED USER PATH**



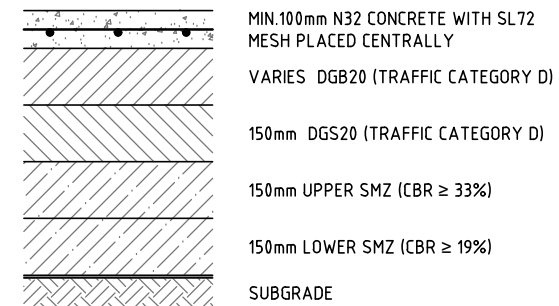
PT-6A

**PAVEMENT TYPE 6A
MILL AND RESHEET**



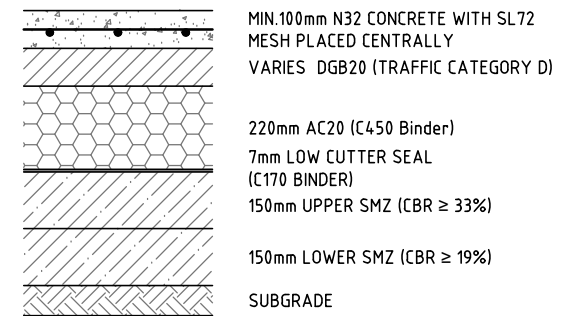
PT-6B

**PAVEMENT TYPE 6B
ASPHALT OVERLAY**



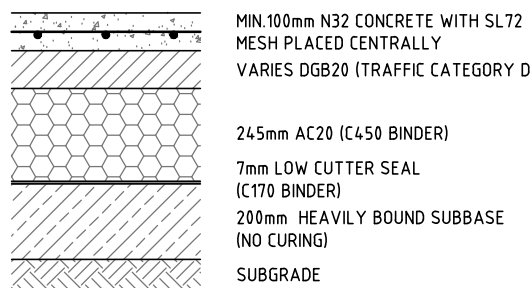
PT-7A

**PAVEMENT TYPE 7A
RAISED CONCRETE
MEDIAN / PT-1**



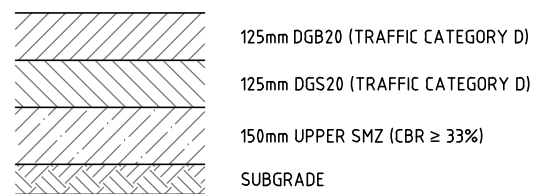
PT-7B

**PAVEMENT TYPE 7B
RAISED CONCRETE
MEDIAN / PT-2A**



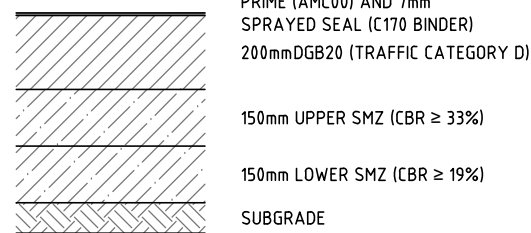
PT-7C

**PAVEMENT TYPE 7C
RAISED CONCRETE
MEDIAN / PT-2B**



PT-8

**PAVEMENT TYPE 8
GRANULAR MATERIAL
WEARING COURSE
CEMETERY ACCESS ROAD**



PT-9

**PAVEMENT TYPE 9
SPRAYED SEAL
MEDIAN / PT-1**

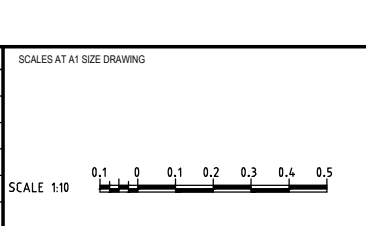
NOTES:

- POLYMER MODIFIED BINDER (A15E BINDER) MUST BE USED FOR RUT RESISTANCE AT APPROACHES TO SIGNALISED INTERSECTIONS.
- GRANULAR MATERIALS WEARING COURSE (PT-8) MUST HAVE A MINIMUM 4 DAY SOAKED CBR VALUE OF 40%. CLEGG IMPACT VALUE BETWEEN 30 AND 54. MAXIMUM PERMEABILITY OF 1x10-4M/S. MAXIMUM PLASTICITY INDEX OF 12%. MATERIAL GRADING AS PER TABLE 3.5 AUSTRROADS 2009 GUIDE PART 6 : UNSEALED PAVEMENTS.

150 mm ON ORIGINAL
A1

DRAWING FILE LOCATION / NAME V:_Vault\Projects\3002750\CAD\DWG\10_PV_Pavement\3002750-PV-1731.dwg		PLOT DATE 13 Nov 2020		TIME 10:25:49	
EXTERNAL REFERENCE FILES	REV	DATE	AMENDMENT / REVISION DESCRIPTION	WVR No.	APPROVAL
	A	19.06.2020	PRELIMINARY SKETCH PLAN	0007	DK
	B	08.10.2020	PRELIMINARY SKETCH PLAN	0014	DK
	C	13.11.2020	PRELIMINARY SKETCH PLAN SUBMISSION	0015	DK

TITLE	NAME
DRAFTER	M.BABU
DRAFTING CHECK	R. GOOSEN
DESIGNER	N. GALE
DESIGN CHECK	T. MEADOWS
PROJECT MANAGER	S.RAVEN
PROJECT DIRECTOR	D. KEEP



DESIGNER

SMEC
Member of the Surlana Jurong Group
SMEC AUSTRALIA PTY LTD
ABN 47 065 475 149
SUITE 2, LEVEL 1, 243 NORTHBOURNE AVENUE
LYNEHAM ACT 2602 AUSTRALIA
SMEC PROJECT No 3002750

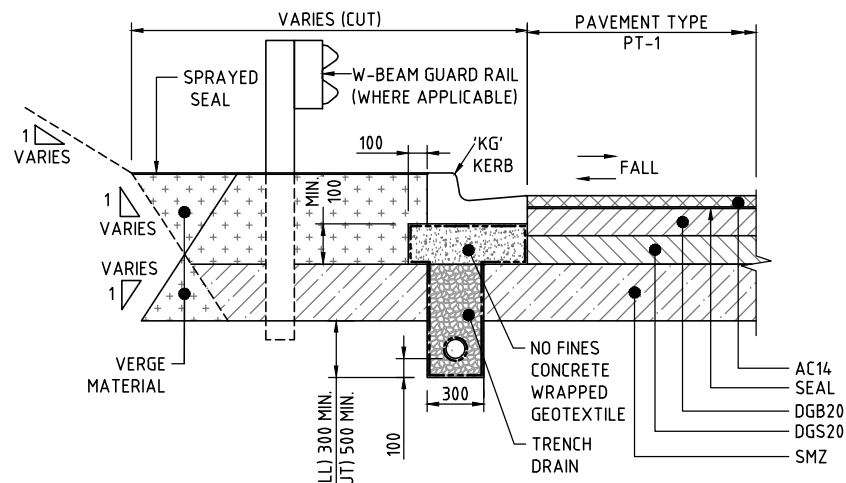
CLIENT

ACT
Government
Transport Canberra & City Services

PROJECT TITLE WILLIAM HOVELL DRIVE DUPLICATION		PROJECT / DRAWING No. 3002750-PV-1731		REVISION C
SCALE AS SHOWN	PHASE PSP			

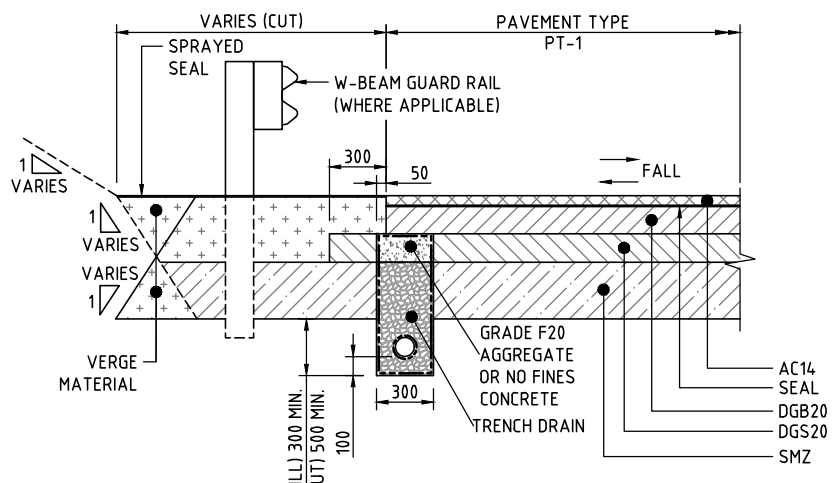
PRELIMINARY

**PAVEMENT DETAILS
SHEET 1**



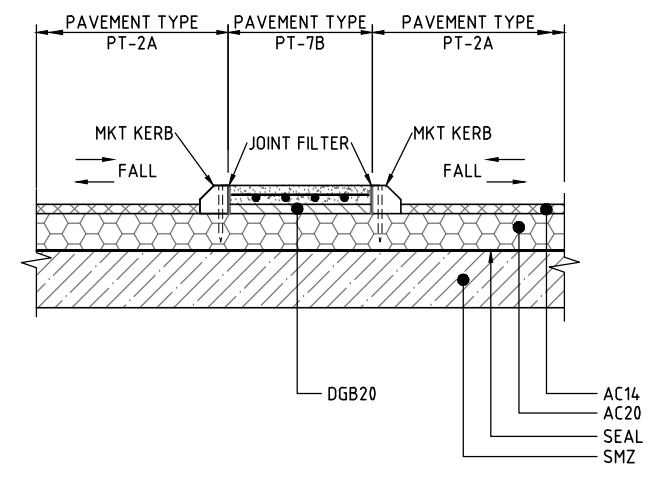
PAVEMENT EDGE DETAIL 1
LOW/HIGH SIDE OF PAVEMENT TYPE 1 WITH 'KG' KERB

DETAIL 01
SCALE 1:20



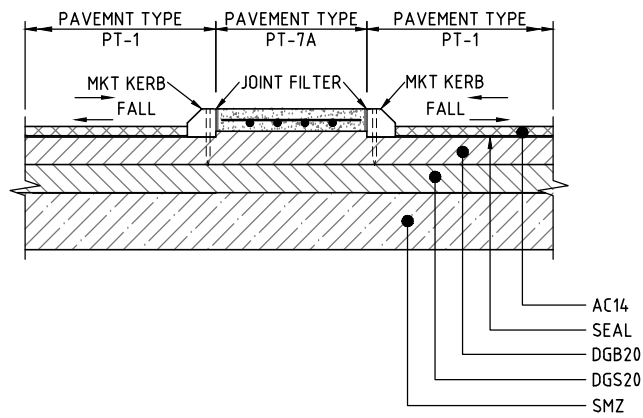
PAVEMENT EDGE DETAIL 4
LOW/HIGH SIDE OF PAVEMENT TYPE 1

DETAIL 04
SCALE 1:20



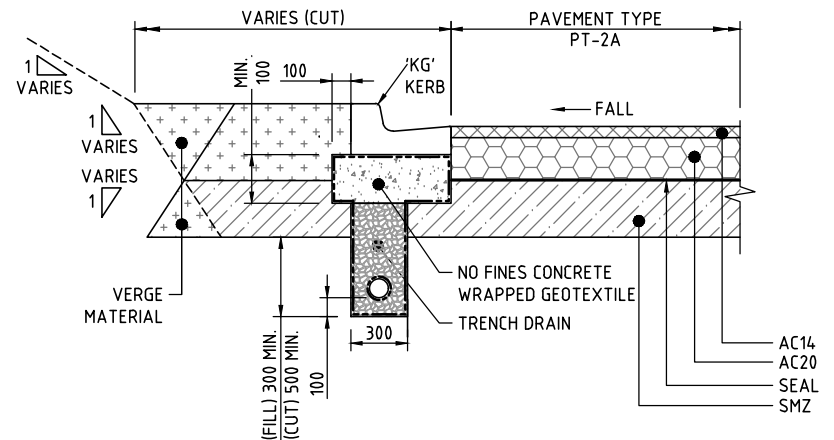
PAVEMENT EDGE DETAIL 7
LOW/HIGH SIDE OF PAVEMENT TYPE 2A WITH MKT KERB

DETAIL 07
SCALE 1:20



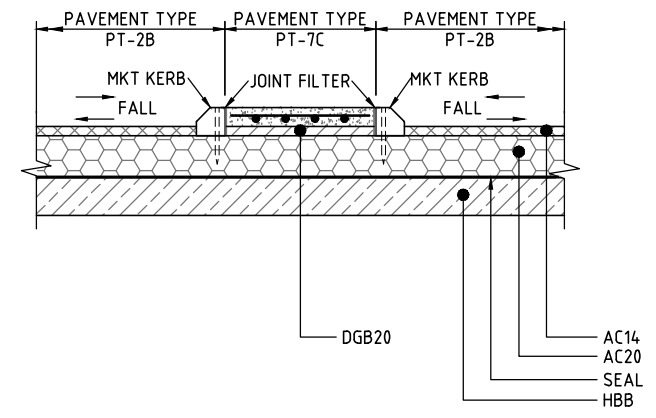
PAVEMENT EDGE DETAIL 2
LOW/HIGH SIDE OF PAVEMENT TYPE 1 WITH MKT KERB

DETAIL 02
SCALE 1:20



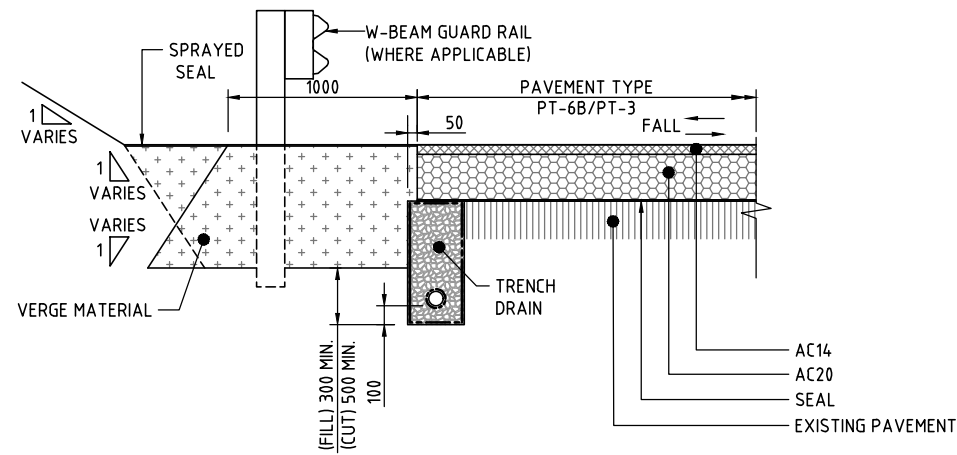
PAVEMENT EDGE DETAIL 5
LOW/HIGH SIDE OF PAVEMENT TYPE 2A WITH 'KG' KERB

DETAIL 05
SCALE 1:20



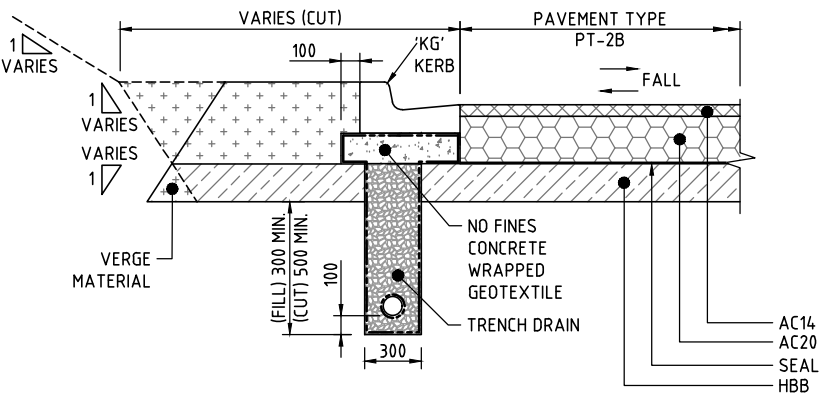
PAVEMENT EDGE DETAIL 8
LOW/HIGH SIDE OF PAVEMENT TYPE 2B WITH MKT KERB

DETAIL 08
SCALE 1:20



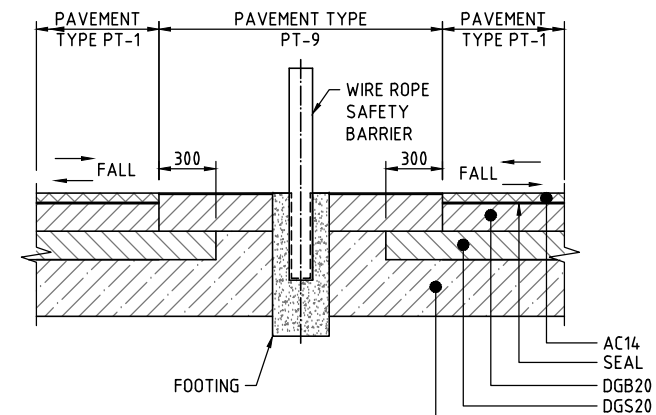
PAVEMENT EDGE DETAIL 3
LOW/HIGH SIDE OF PAVEMENT TYPE 6B/TYPE 3

DETAIL 03
SCALE 1:20



PAVEMENT EDGE DETAIL 6
LOW/HIGH SIDE OF PAVEMENT TYPE 2B WITH 'KG' KERB

DETAIL 06
SCALE 1:20



PAVEMENT EDGE DETAIL 9
LOW/HIGH SIDE OF PAVEMENT TYPE 1 WITH PAVEMENT TYPE 9

DETAIL 09
SCALE 1:20

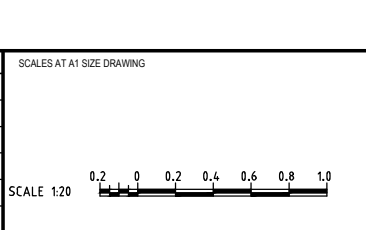
NOTES:
1. FOR PAVEMENT PROFILE DETAILS REFER DRG No. 3002750-PV-1731.

PRELIMINARY

150 mm ON ORIGINAL
A1
0 10 20 30 40 50 60 70 80 90 100 110 120 130 140 150

DRAWING FILE LOCATION / NAME V:\Vault\Projects\3002750\CAD\DWG\10_PV_Pavement\3002750-PV-1732.dwg		REV	DATE	AMENDMENT / REVISION DESCRIPTION	WVR No.	APPROVAL	TITLE	NAME
EXTERNAL REFERENCE FILES		A	19.06.2020	PRELIMINARY SKETCH PLAN	0007	DK	DRAFTER	M.BABU
		B	08.10.2020	PRELIMINARY SKETCH PLAN	0014	DK	DRAFTING CHECK	R. GOOSEN
		C	13.11.2020	PRELIMINARY SKETCH PLAN SUBMISSION	0015	DK	DESIGNER	N. GALE
							DESIGN CHECK	T. MEADOWS
							PROJECT MANAGER	S.RAVEN
							PROJECT DIRECTOR	D. KEEP

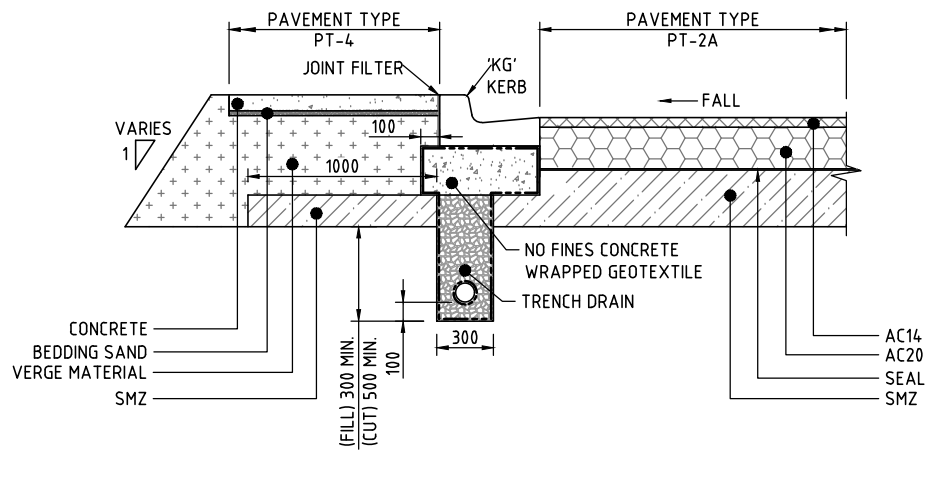
SCALE	AS SHOWN
PHASE	PSP
PROJECT / DRAWING No.	3002750-PV-1732
REVISION	C



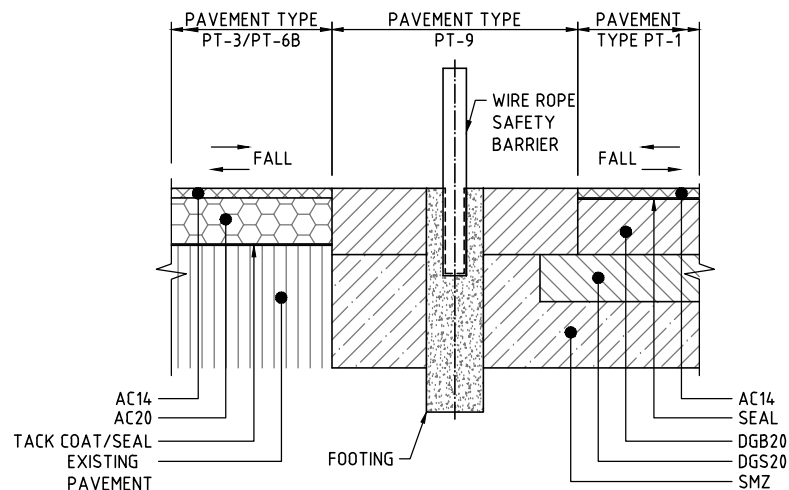
DESIGNER
SMEC
Member of the Surlana Jurong Group
SMEC AUSTRALIA PTY LTD
ABN 47 065 475 149
SUITE 2, LEVEL 1, 243 NORTHBOURNE AVENUE
LYNEHAM ACT 2602 AUSTRALIA
SMEC PROJECT No 3002750

CLIENT
ACT Government
Transport Canberra & City Services

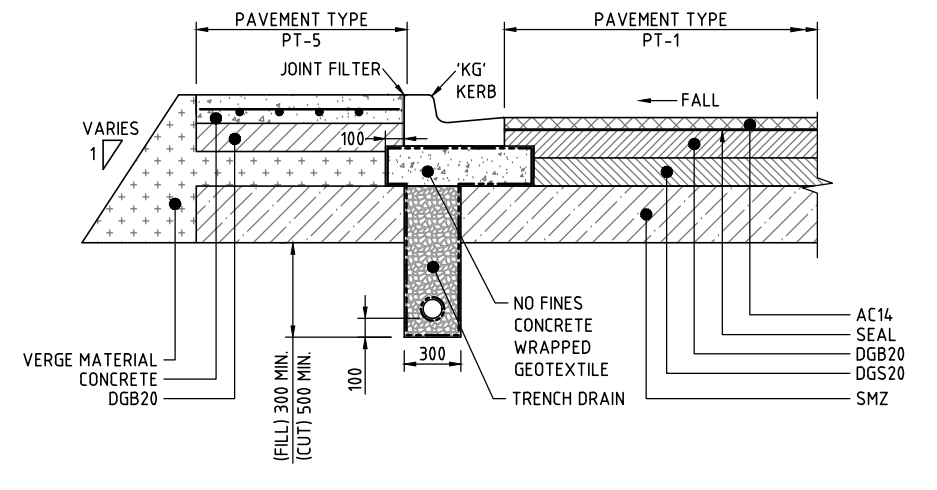
PROJECT TITLE
WILLIAM HOVELL DRIVE DUPLICATION
PAVEMENT DETAILS SHEET 2



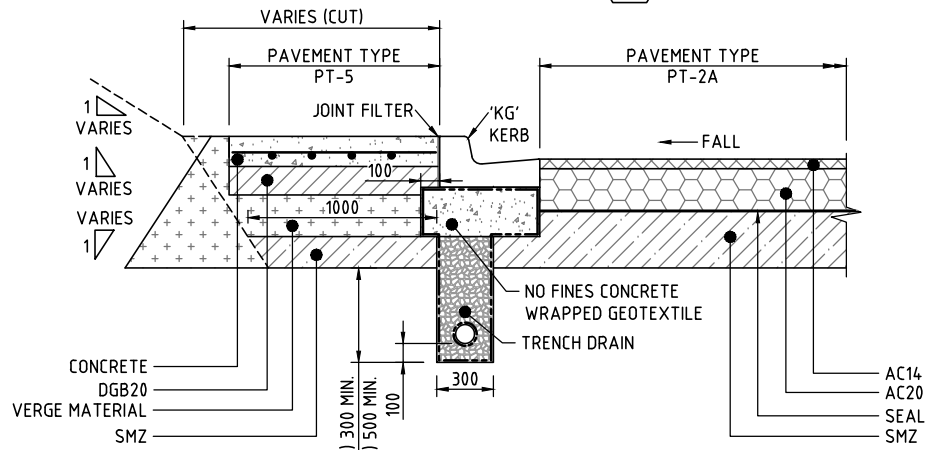
PAVEMENT EDGE DETAIL 10
 LOW SIDE OF PAVEMENT TYPE 2A
 WITH PAVEMENT TYPE 4
 DETAIL 10
 SCALE 1:20



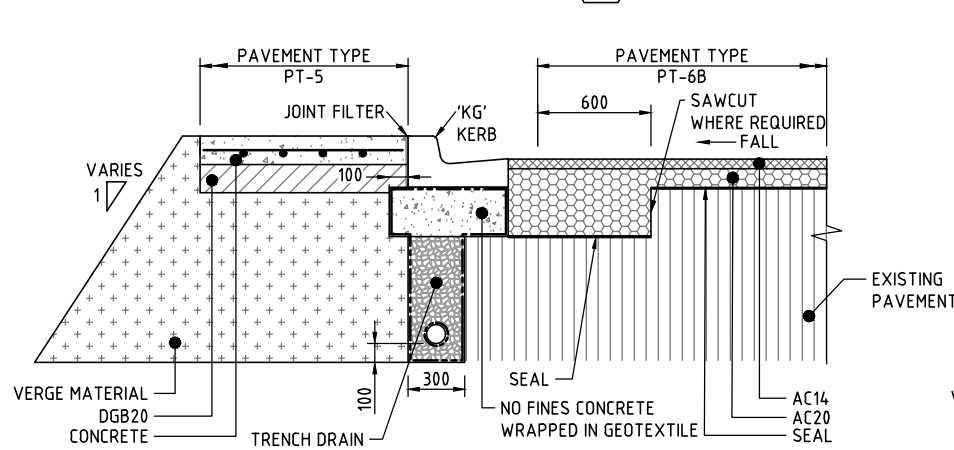
PAVEMENT EDGE DETAIL 13
 LOW/HIGH SIDE OF PAVEMENT TYPE 6B/TYPE 3
 AND PAVEMENT TYPE PT-1
 DETAIL 13
 SCALE 1:20



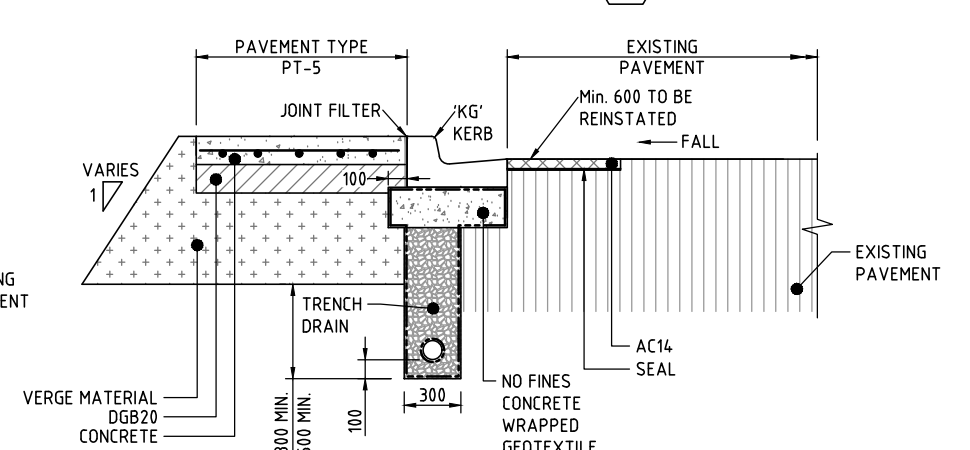
PAVEMENT EDGE DETAIL 16
 LOW SIDE OF PAVEMENT TYPE 6B
 WITH PAVEMENT TYPE 5
 DETAIL 16
 SCALE 1:20



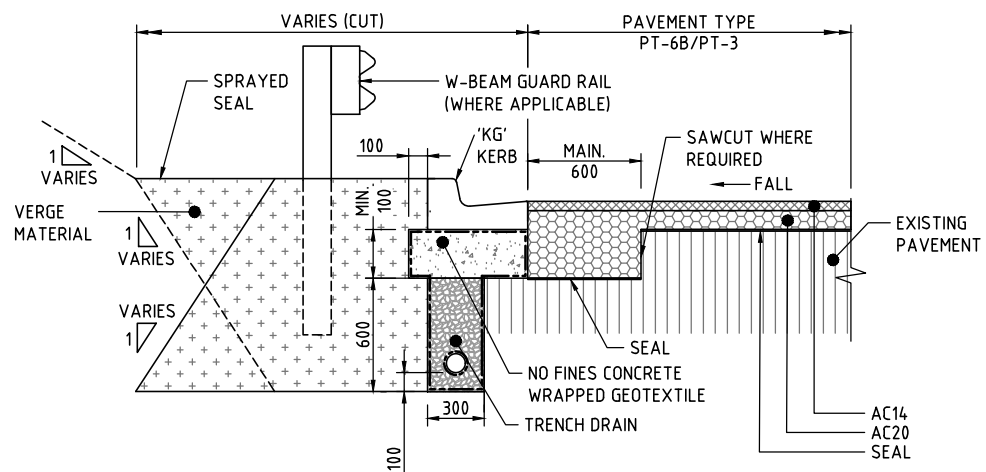
PAVEMENT EDGE DETAIL 11
 LOW SIDE OF PAVEMENT TYPE 2A
 WITH PAVEMENT TYPE 5
 DETAIL 11
 SCALE 1:20



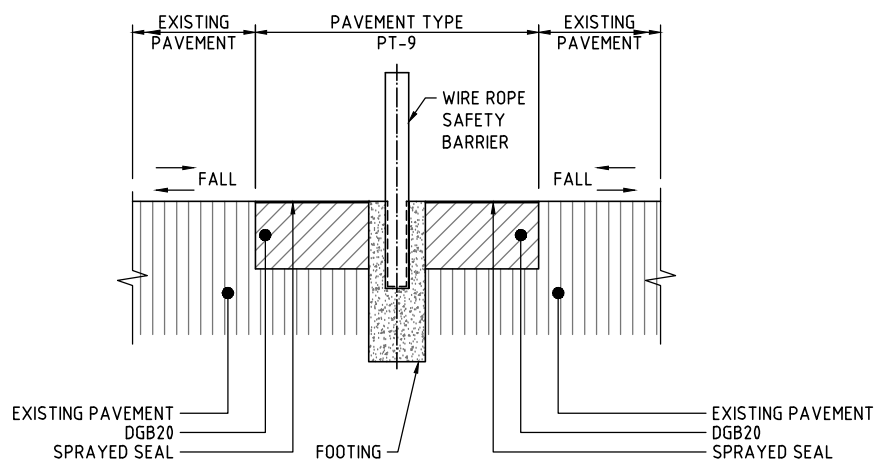
PAVEMENT EDGE DETAIL 14
 LOW SIDE OF PAVEMENT TYPE 6B
 WITH PAVEMENT TYPE 5
 DETAIL 14
 SCALE 1:20



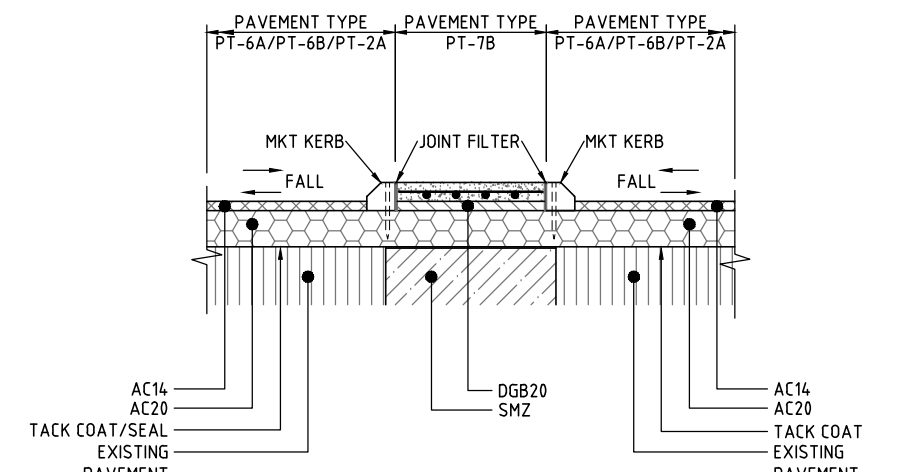
PAVEMENT EDGE DETAIL 17
 LOW SIDE OF EXISTING PAVEMENT
 WITH PAVEMENT TYPE 5
 DETAIL 17
 SCALE 1:20



PAVEMENT EDGE DETAIL 12
 LOW SIDE OF PAVEMENT TYPE 6B/TYPE 3
 DETAIL 12
 SCALE 1:20



PAVEMENT EDGE DETAIL 15
 LOW/HIGH SIDE OF EXISTING PAVEMENT WITH PAVEMENT TYPE 9
 DETAIL 15
 SCALE 1:20



PAVEMENT EDGE DETAIL 18
 LOW/HIGH SIDE OF PAVEMENT TYPE 7B
 WITH PAVEMENT TYPE 6A/TYPE 6B/TYPE 2A WITH MKT KERB
 DETAIL 18
 SCALE 1:20

NOTES:
 1. FOR PAVEMENT PROFILE DETAILS REFER DRG No. 3002750-PV-1731.

PRELIMINARY

150 mm ON ORIGINAL
 A1

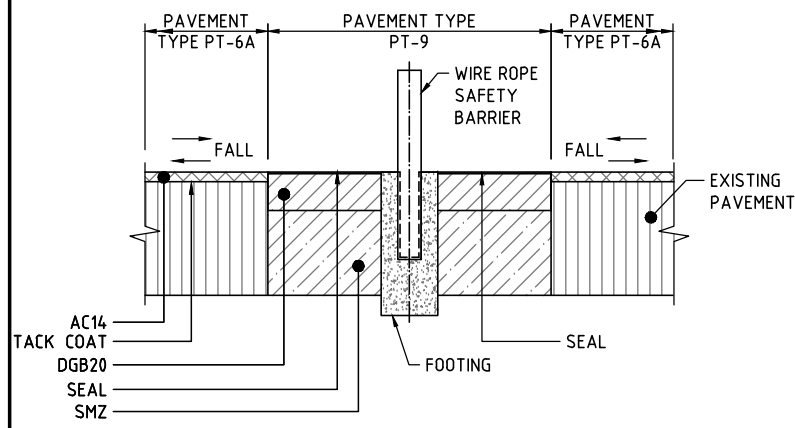
DRAWING FILE LOCATION / NAME V:\Vault\Projects\3002750\CAD\DWG\10_PV_Pavement\3002750-PV-1733.dwg		REV	DATE	AMENDMENT / REVISION DESCRIPTION	WVR No.	APPROVAL	TITLE	NAME
EXTERNAL REFERENCE FILES		A	19.06.2020	PRELIMINARY SKETCH PLAN	0007	DK	DRAFTER	M. BABU
		B	08.10.2020	PRELIMINARY SKETCH PLAN	0014	DK	DRAFTING CHECK	R. GOOSEN
		C	13.11.2020	PRELIMINARY SKETCH PLAN SUBMISSION	0015	DK	DESIGNER	N. GALE
							DESIGN CHECK	T. MEADOWS
							PROJECT MANAGER	S. RAVEN
							PROJECT DIRECTOR	D. KEEP

SCALE AT A1 SIZE DRAWING	SCALE 1:20
0.2 0 0.2 0.4 0.6 0.8 1.0	

DESIGNER **SMEC**
 Member of the Surlana Jurong Group
 SMEC AUSTRALIA PTY LTD
 ABN 47 065 475 149
 SUITE 2, LEVEL 1, 243 NORTHBOURNE AVENUE
 LYNEHAM ACT 2602 AUSTRALIA
 SMEC PROJECT No 3002750

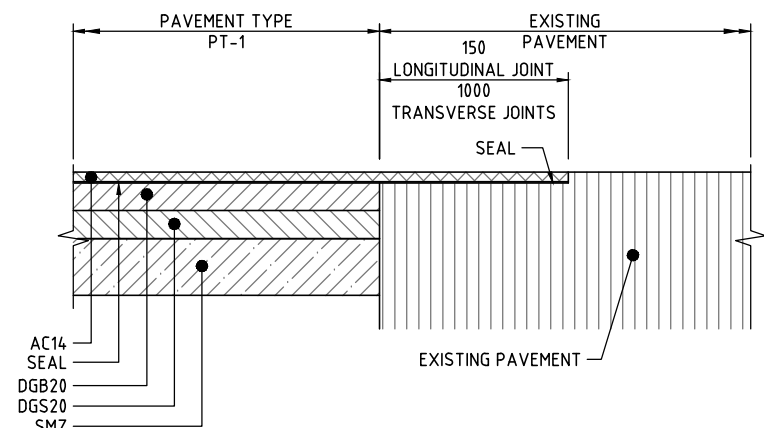
CLIENT **ACT Government**
 Transport Canberra & City Services

PROJECT TITLE	WILLIAM HOVELL DRIVE DUPLICATION		
	PAVEMENT DETAILS SHEET 3		
SCALE	PHASE	PROJECT / DRAWING No.	REVISION
AS SHOWN	PSP	3002750-PV-1733	C



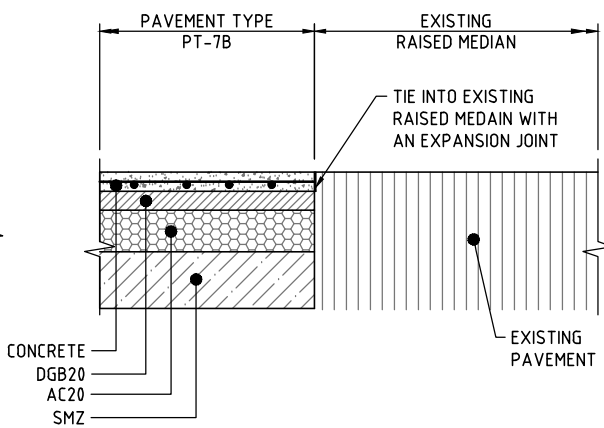
PAVEMENT EDGE DETAIL 19
LOW/HIGH SIDE OF PAVEMENT TYPE 1 WITH PAVEMENT TYPE 6A

DETAIL **19**
SCALE 1:20



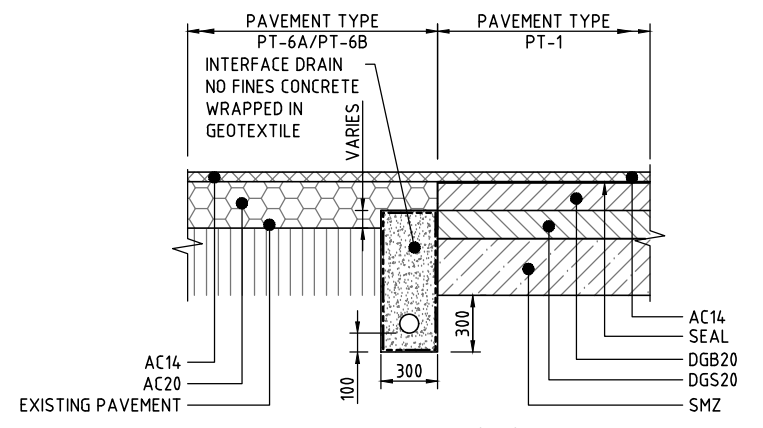
PAVEMENT INTERFACE DETAIL X3
PAVEMENT TYPE 1 TO EXISTING PAVEMENT

DETAIL **X3**
SCALE 1:20



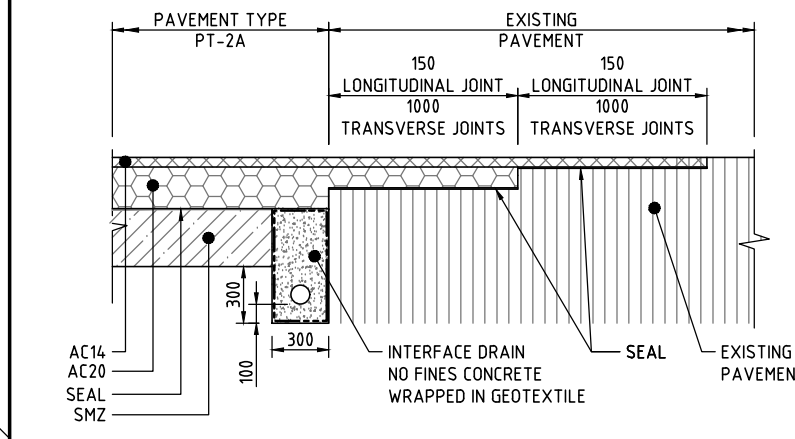
PAVEMENT EDGE DETAIL X6
PAYMENT TYPE PT-7B TO EXISTING PAVEMENT

DETAIL **X6**
SCALE 1:20



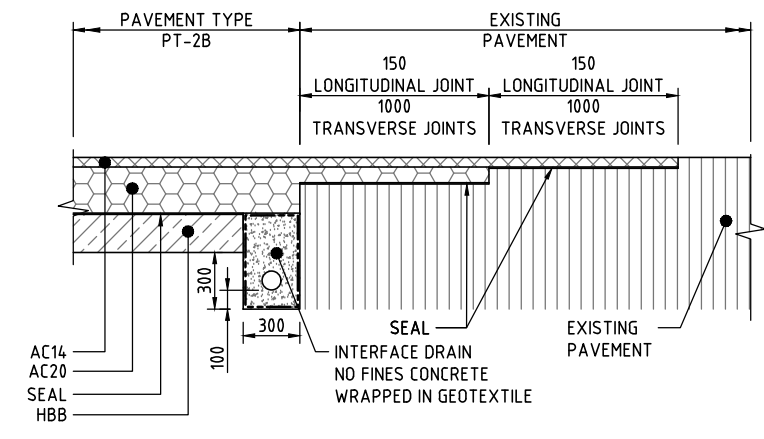
PAVEMENT INTERFACE DETAIL X9
PAVEMENT TYPE PT-6A/PT-6B TO PAVEMENT TYPE 1

DETAIL **X9**
SCALE 1:20



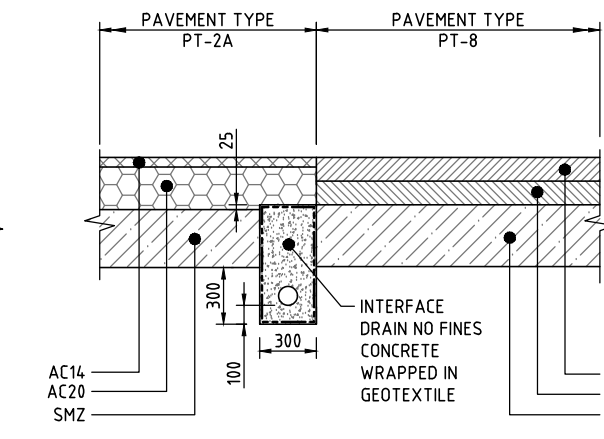
PAVEMENT INTERFACE DETAIL X1
PAVEMENT TYPE 2A TO EXISTING PAVEMENT

DETAIL **X1**
SCALE 1:20



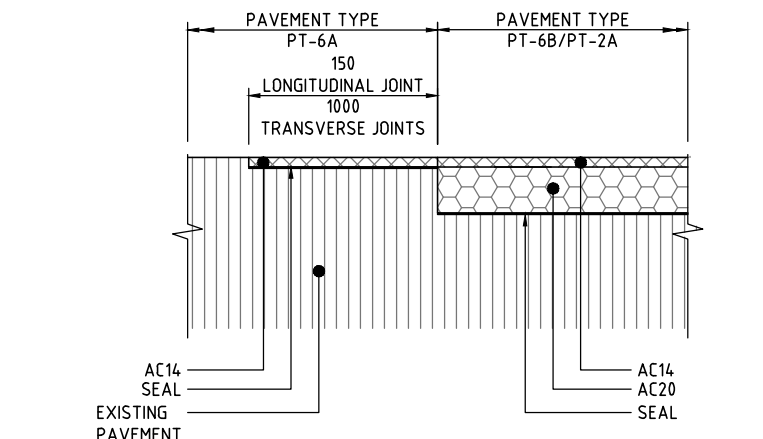
PAVEMENT INTERFACE DETAIL X4
PAVEMENT TYPE 2B TO EXISTING PAVEMENT

DETAIL **X4**
SCALE 1:20



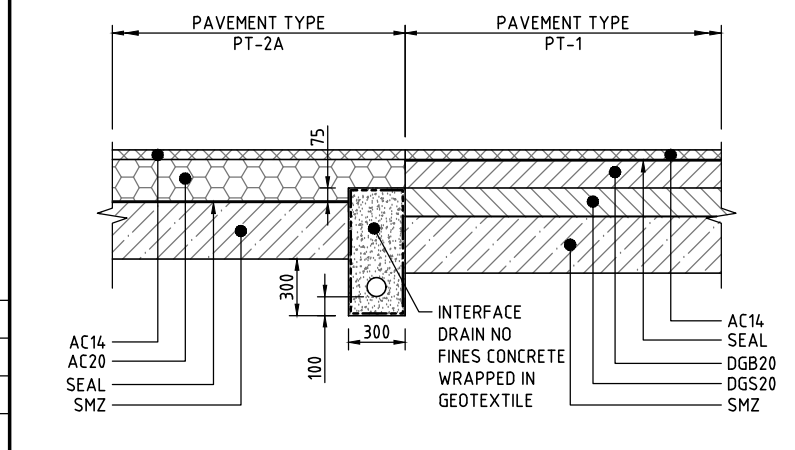
PAVEMENT EDGE DETAIL X7
PAYMENT TYPE PT-2A TO PAVEMENT TYPE PT-8

DETAIL **X7**
SCALE 1:20



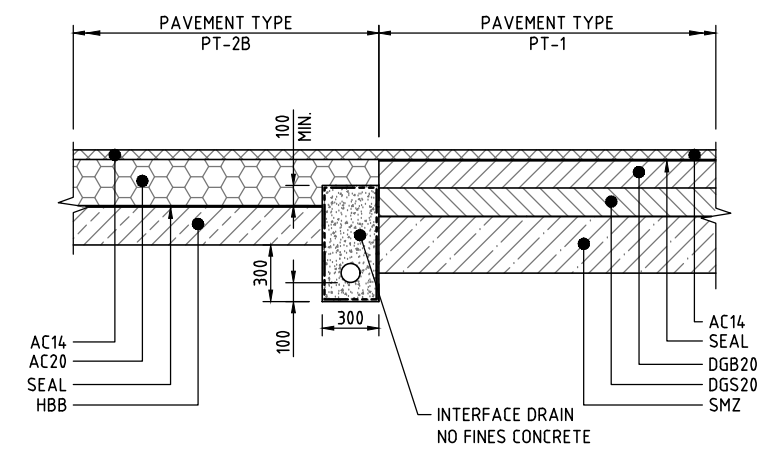
PAVEMENT INTERFACE DETAIL X10
PAVEMENT TYPE PT-6A TO PAVEMENT TYPE 6B/TYPE 2A

DETAIL **X10**
SCALE 1:20



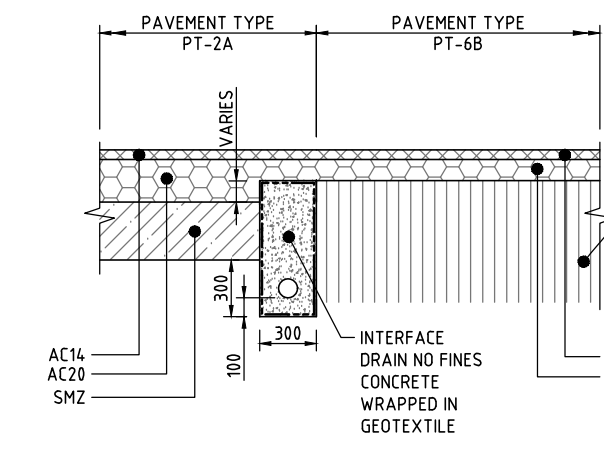
PAVEMENT INTERFACE DETAIL X2
PAVEMENT TYPE 2A TO EXISTING PAVEMENT

DETAIL **X2**
SCALE 1:20



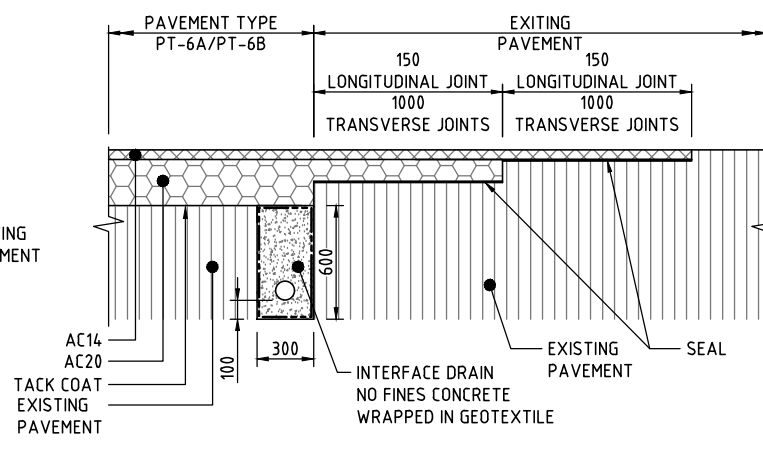
PAVEMENT INTERFACE DETAIL X5
PAVEMENT TYPE 2B TO PAVEENT TYPE PT 1

DETAIL **X5**
SCALE 1:20



PAVEMENT EDGE DETAIL X8
PAYMENT TYPE PT-2A TO PAVEMENT TYPE PT-6B

DETAIL **X8**
SCALE 1:20



PAVEMENT INTERFACE DETAIL X11
PAVEMENT TYPE 6A/TYPE 6B TO EXISTING PAVEMENT

DETAIL **X11**
SCALE 1:20

NOTES:
1. FOR PAVEMENT PROFILE DETAILS REFER DRG No. 3002750-PV-1731.

PRELIMINARY

150 mm ON ORIGINAL

DRAWING FILE LOCATION / NAME V:\Vault\Projects\3002750\CAD\DWG\10_PV_Pavement\3002750-PV-1734.dwg		REV	DATE	AMENDMENT / REVISION DESCRIPTION	WVR No.	APPROVAL	TITLE	NAME
EXTERNAL REFERENCE FILES		A	19.06.2020	PRELIMINARY SKETCH PLAN	0007	DK	DRAFTER	M. BABU
		B	08.10.2020	PRELIMINARY SKETCH PLAN	0014	DK	DRAFTING CHECK	R. GOOSEN
		C	13.11.2020	PRELIMINARY SKETCH PLAN SUBMISSION	0015	DK	DESIGNER	N. GALE
							DESIGN CHECK	T. MEADOWS
							PROJECT MANAGER	S. RAVEN
							PROJECT DIRECTOR	D. KEEP

SCALE AT A1 SIZE DRAWING	DESIGNER	CLIENT
SCALE 1:20	SMEC Member of the Surlana Jurong Group SMEC AUSTRALIA PTY LTD ABN 47 065 475 149 SUITE 2, LEVEL 1, 243 NORTHBOURNE AVENUE LYNEHAM ACT 2602 AUSTRALIA SMEC PROJECT No 3002750	ACT Government Transport Canberra & City Services

PROJECT TITLE	WILLIAM HOVELL DRIVE DUPLICATION
SCALE	AS SHOWN
PHASE	PSP
PROJECT / DRAWING No.	3002750-PV-1734
REVISION	C

PAVEMENT DETAILS SHEET 5	
--------------------------	--