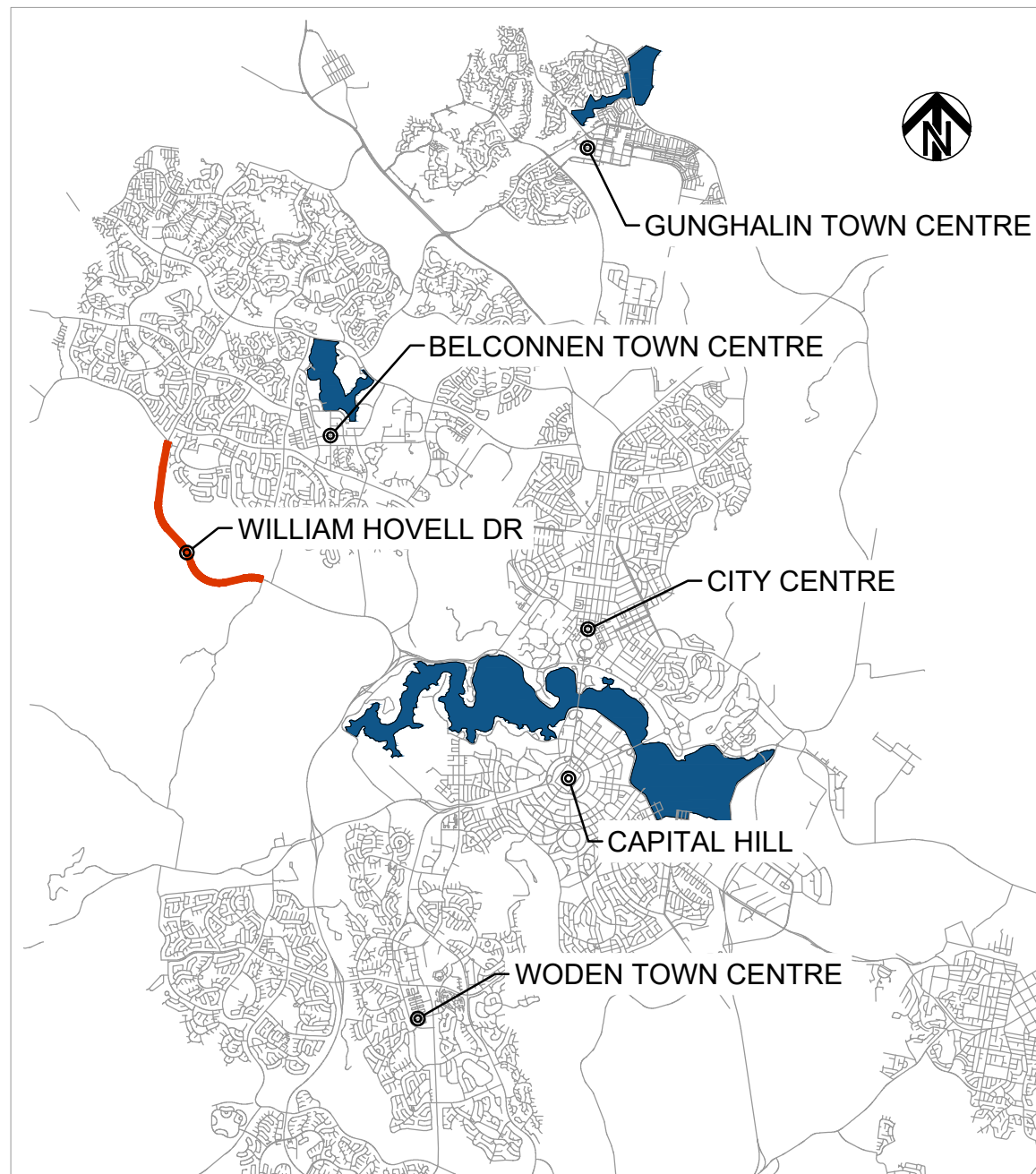


**ACT**  
Government

Transport Canberra & City Services



LOCALITY PLAN  
NTS

# WILLIAM HOVELL DRIVE DUPLICATION

## 3002750

### DRAFT DETAILED DESIGN

### APRIL 2022



Member of the Surbana Jurong Group

© ABN 47 065 475 149

LEVEL 9, 12 MOORE ST  
CANBERRA ACT 2601



DRAWING INDEX

DRAWING NUMBER	DRAWING TITLE
3002750-GE-0000	COVER SHEET AND LOCALITY PLAN
3002750-GE-0001	PROJECT SITE PLAN
3002750-GE-0010	INDEX SHEET 1
3002750-GE-0011	INDEX SHEET 2
3002750-GE-0012	INDEX SHEET 3
3002750-GE-0020	GENERAL NOTES SHEET 1
3002750-GE-0031	TYPICAL SECTIONS SHEET 1
3002750-GE-0032	TYPICAL SECTIONS SHEET 2
3002750-GE-0033	TYPICAL SECTIONS SHEET 3
3002750-GE-0034	TYPICAL SECTIONS SHEET 4
3002750-GE-0035	TYPICAL SECTIONS SHEET 5
3002750-GE-0041	TYPICAL DETAILS SHEET 1
3002750-GE-0042	TYPICAL DETAILS SHEET 2
3002750-GE-0043	TYPICAL DETAILS SHEET 3
3002750-GE-0044	TYPICAL DETAILS SHEET 4
3002750-GE-0101	MISCELLANEOUS DETAILS FAUNA UNDERPASS & ROPE BRIDGE LOCALITY PLAN
3002750-GE-0102	MISCELLANEOUS DETAILS FAUNA UNDERPASS & ROPE BRIDGE NOTES
3002750-GE-0110	MISCELLANEOUS DETAILS FAUNA CROSSING ROPE BRIDGE PLAN
3002750-GE-0111	MISCELLANEOUS DETAILS FAUNA CROSSING ROPE BRIDGE SHEET 1
3002750-GE-0112	MISCELLANEOUS DETAILS FAUNA CROSSING ROPE BRIDGE SHEET 2
3002750-GE-0113	MISCELLANEOUS DETAILS FAUNA CROSSING ROPE BRIDGE SHEET 3
3002750-GE-0120	MISCELLANEOUS DETAILS FAUNA UNDERPASS (RCBC) PLAN
3002750-GE-0121	MISCELLANEOUS DETAILS FAUNA UNDERPASS (RCBC) SHEET 1
3002750-GE-0122	MISCELLANEOUS DETAILS FAUNA UNDERPASS (RCBC) SHEET 2
3002750-GE-0123	MISCELLANEOUS DETAILS FAUNA UNDERPASS (RCBC) SHEET 3
3002750-GE-0131	MISCELLANEOUS DETAILS EXCLUSION FENCE SHEET 1
3002750-GE-0132	MISCELLANEOUS DETAILS EXCLUSION FENCE SHEET 2
<b>GENERAL ARRANGEMENT</b>	
3002750-RD-0100	GENERAL ARRANGEMENT COVER SHEET
3002750-RD-0101	GENERAL ARRANGEMENT NOTES
3002750-RD-0102	GENERAL ARRANGEMENT NOTES AND LEGEND
3002750-RD-0110	GENERAL ARRANGEMENT PLAN SHEET 1
3002750-RD-0111	GENERAL ARRANGEMENT PLAN SHEET 2
3002750-RD-0112	GENERAL ARRANGEMENT PLAN SHEET 3
3002750-RD-0113	GENERAL ARRANGEMENT PLAN SHEET 4
3002750-RD-0114	GENERAL ARRANGEMENT PLAN SHEET 5
3002750-RD-0115	GENERAL ARRANGEMENT PLAN SHEET 6
3002750-RD-0116	GENERAL ARRANGEMENT PLAN SHEET 7
3002750-RD-0117	GENERAL ARRANGEMENT PLAN SHEET 8
3002750-RD-0118	GENERAL ARRANGEMENT PLAN SHEET 9
3002750-RD-0119	GENERAL ARRANGEMENT PLAN SHEET 10
3002750-RD-0120	GENERAL ARRANGEMENT PLAN SHEET 11
3002750-RD-0121	GENERAL ARRANGEMENT PLAN SHEET 12
3002750-RD-0122	GENERAL ARRANGEMENT PLAN SHEET 13

DRAWING INDEX

DRAWING NUMBER	DRAWING TITLE
3002750-RD-0123	GENERAL ARRANGEMENT PLAN SHEET 14
3002750-RD-0124	GENERAL ARRANGEMENT PLAN SHEET 15
3002750-RD-0125	GENERAL ARRANGEMENT PLAN SHEET 16
3002750-RD-0129	GENERAL ARRANGEMENT PLAN SHEET 17
3002750-RD-0151	INTERSECTION DETAIL PLAN SHEET 1
3002750-RD-0152	INTERSECTION DETAIL PLAN SHEET 2
<b>ROAD ALIGNMENT</b>	
3002750-RD-1100	ROAD ALIGNMENT PLAN COVER SHEET
3002750-RD-1101	ROAD ALIGNMENT PLAN SHEET 1
3002750-RD-1102	ROAD ALIGNMENT PLAN SHEET 2
3002750-RD-1103	ROAD ALIGNMENT PLAN SHEET 3
3002750-RD-1104	ROAD ALIGNMENT PLAN SHEET 4
3002750-RD-1105	ROAD ALIGNMENT PLAN SHEET 5
3002750-RD-1106	ROAD ALIGNMENT PLAN SHEET 6
3002750-RD-1107	ROAD ALIGNMENT PLAN SHEET 7
3002750-RD-1108	ROAD ALIGNMENT PLAN SHEET 8
3002750-RD-1109	ROAD ALIGNMENT PLAN SHEET 9
3002750-RD-1110	ROAD ALIGNMENT PLAN SHEET 10
3002750-RD-1111	ROAD ALIGNMENT PLAN SHEET 11
3002750-RD-1112	ROAD ALIGNMENT PLAN SHEET 12
3002750-RD-1113	ROAD ALIGNMENT PLAN SHEET 13
3002750-RD-1114	ROAD ALIGNMENT PLAN SHEET 14
3002750-RD-1115	ROAD ALIGNMENT PLAN SHEET 15
3002750-RD-1116	ROAD ALIGNMENT PLAN SHEET 16
3002750-RD-1119	ROAD ALIGNMENT PLAN SHEET 17
<b>LONGITUDINAL SECTIONS</b>	
3002750-LS-1200	LONGITUDINAL SECTIONS COVER SHEET
3002750-LS-1201	LONGITUDINAL SECTIONS MC00 WESTBOUND SHEET 1
3002750-LS-1202	LONGITUDINAL SECTIONS MC00 WESTBOUND SHEET 2
3002750-LS-1203	LONGITUDINAL SECTIONS MC00 WESTBOUND SHEET 3
3002750-LS-1204	LONGITUDINAL SECTIONS MC00 WESTBOUND SHEET 4
3002750-LS-1205	LONGITUDINAL SECTIONS MC00 WESTBOUND SHEET 5
3002750-LS-1206	LONGITUDINAL SECTIONS MC00 WESTBOUND SHEET 6
3002750-LS-1207	LONGITUDINAL SECTIONS MC00 WESTBOUND SHEET 7
3002750-LS-1208	LONGITUDINAL SECTIONS MC00 WESTBOUND SHEET 8
3002750-LS-1209	LONGITUDINAL SECTIONS MC00 WESTBOUND SHEET 9
3002750-LS-1210	LONGITUDINAL SECTIONS MC00 WESTBOUND SHEET 10
3002750-LS-1221	LONGITUDINAL SECTIONS MC10 EASTBOUND SHEET 1
3002750-LS-1222	LONGITUDINAL SECTIONS MC10 EASTBOUND SHEET 2
3002750-LS-1223	LONGITUDINAL SECTIONS MC10 EASTBOUND SHEET 3
3002750-LS-1224	LONGITUDINAL SECTIONS MC10 EASTBOUND SHEET 4
3002750-LS-1225	LONGITUDINAL SECTIONS MC10 EASTBOUND SHEET 5
3002750-LS-1226	LONGITUDINAL SECTIONS MC10 EASTBOUND SHEET 6
3002750-LS-1227	LONGITUDINAL SECTIONS MC10 EASTBOUND SHEET 7
3002750-LS-1228	LONGITUDINAL SECTIONS MC10 EASTBOUND SHEET 8
3002750-LS-1229	LONGITUDINAL SECTIONS MC10 EASTBOUND SHEET 9
3002750-LS-1230	LONGITUDINAL SECTIONS MC10 EASTBOUND SHEET 10

DRAWING INDEX

DRAWING NUMBER	DRAWING TITLE
3002750-LS-1240	LONGITUDINAL SECTIONS MC30 EASTBOUND SHEET 1
3002750-LS-1241	LONGITUDINAL SECTIONS MC31 EASTBOUND SHEET 1
3002750-LS-1245	LONGITUDINAL SECTIONS MC40 EASTBOUND SHEET 1
3002750-LS-1250	LONGITUDINAL SECTIONS MC50 CEMETERY ACCESS SHEET 1
3002750-LS-1251	LONGITUDINAL SECTIONS MC50 CEMETERY ACCESS SHEET 2
3002750-LS-1260	LONGITUDINAL SECTIONS MP20 SHARED USER PATH SHEET 1
3002750-LS-1261	LONGITUDINAL SECTIONS MP20 SHARED USER PATH SHEET 2
3002750-LS-1262	LONGITUDINAL SECTIONS MP20 SHARED USER PATH SHEET 3
3002750-LS-1263	LONGITUDINAL SECTIONS MP20 SHARED USER PATH SHEET 4
3002750-LS-1264	LONGITUDINAL SECTIONS MP20 SHARED USER PATH SHEET 5
3002750-LS-1266	LONGITUDINAL SECTIONS MP21 SHARED USER PATH SHEET 1
3002750-LS-1267	LONGITUDINAL SECTIONS MP21 SHARED USER PATH SHEET 2
3002750-LS-1268	LONGITUDINAL SECTIONS MP21 SHARED USER PATH SHEET 3
3002750-LS-1269	LONGITUDINAL SECTIONS MP21 SHARED USER PATH SHEET 4
<b>CROSS SECTIONS</b>	
3002750-XS-1300	CROSS SECTIONS COVER SHEET
3002750-XS-1301	CROSS SECTION MC10 SHEET 1
3002750-XS-1302	CROSS SECTION MC10 SHEET 2
3002750-XS-1303	CROSS SECTION MC10 SHEET 3
3002750-XS-1304	CROSS SECTION MC10 SHEET 4
3002750-XS-1305	CROSS SECTION MC10 SHEET 5
3002750-XS-1306	CROSS SECTION MC10 SHEET 6
3002750-XS-1307	CROSS SECTION MC10 SHEET 7
3002750-XS-1308	CROSS SECTION MC10 SHEET 8
3002750-XS-1309	CROSS SECTION MC10 SHEET 9
3002750-XS-1310	CROSS SECTION MC10 SHEET 10
3002750-XS-1311	CROSS SECTION MC10 SHEET 11
3002750-XS-1312	CROSS SECTION MC10 SHEET 12
3002750-XS-1313	CROSS SECTION MC10 SHEET 13
3002750-XS-1314	CROSS SECTION MC10 SHEET 14
3002750-XS-1315	CROSS SECTION MC10 SHEET 15
3002750-XS-1316	CROSS SECTION MC10 SHEET 16
3002750-XS-1317	CROSS SECTION MC10 SHEET 17
3002750-XS-1318	CROSS SECTION MC10 SHEET 18
3002750-XS-1319	CROSS SECTION MC10 SHEET 19
3002750-XS-1320	CROSS SECTION MC10 SHEET 20
3002750-XS-1321	CROSS SECTION MC10 SHEET 21
3002750-XS-1322	CROSS SECTION MC10 SHEET 22
3002750-XS-1323	CROSS SECTION MC10 SHEET 23
3002750-XS-1324	CROSS SECTION MC10 SHEET 24
3002750-XS-1325	CROSS SECTION MC10 SHEET 25
3002750-XS-1326	CROSS SECTION MC10 SHEET 26
3002750-XS-1327	CROSS SECTION MC10 SHEET 27
3002750-XS-1328	CROSS SECTION MC10 SHEET 28
3002750-XS-1329	CROSS SECTION MC10 SHEET 29
3002750-XS-1330	CROSS SECTION MC10 SHEET 30
3002750-XS-1331	CROSS SECTION MC10 SHEET 31
3002750-XS-1332	CROSS SECTION MC10 SHEET 32
3002750-XS-1333	CROSS SECTION MC10 SHEET 33
3002750-XS-1334	CROSS SECTION MC10 SHEET 34
3002750-XS-1335	CROSS SECTION MC10 SHEET 35

150 mm ON ORIGINAL  
150  
140  
130  
120  
110  
100  
90  
80  
70  
60  
50  
40  
30  
20  
10  
0

DRAWING FILE LOCATION / NAME V:\Vault\Projects\3002750\CAD\DWG\01_GE_General\3002750-GE-0010.dwg		PLOT DATE 27 May 2022	TIME 09:19:14
EXTERNAL REFERENCE FILES	REV	DATE	AMENDMENT / REVISION DESCRIPTION
	A	19.06.2020	PRELIMINARY SKETCH PLAN
	B	08.10.2020	PRELIMINARY SKETCH PLAN
	C	13.11.2020	PRELIMINARY SKETCH PLAN SUBMISSION
	D	27.05.2022	DETAIL FOR DESIGN SPREADSHEET ALIGNMENT CHANGES

WVR No.	APPROVAL	TITLE	NAME
0007	DK	DRAFTER	L. HESLOP
0014	DK	DRAFTING CHECK	R. GOOSEN
0015	DK	DESIGNER	B. LEJANO
0	DK	DESIGN CHECK	T. MEADOWS
		PROJECT MANAGER	K. DECANHA
		PROJECT DIRECTOR	D. KEEP

DESIGNER



Member of the Surbana Jurong Group  
ABN 47 065 475 149

LEVEL 9, 12 MOORE STREET  
CANBERRA ACT 2601 AUSTRALIA  
SMC PROJECT No 3002750

<b>CHECK PRINT</b>		PRELIM <input type="checkbox"/>	FINAL <input type="checkbox"/>
DISCIPLINE		INITIAL	DATE
DISCIPLINE			
DISCIPLINE			
DISCIPLINE			
BACKDRAFTED/CORRECTED			
CONFIRMED			

PROJECT TITLE WILLIAM HOVELL DRIVE DUPLICATION		PROJECT / DRAWING No 3002750-GE-0010	REVISION C.1
SCALE AS SHOWN	PHASE PSP	INDEX SHEET 1	

**UNCONTROLLED COPY**  
**Check Print**  
**NOT FOR CONSTRUCTION**

DR

DRAWING INDEX

DRAWING NUMBER	DRAWING TITLE
3002750-XS-1336	CROSS SECTION MC10 SHEET 36
3002750-XS-1337	CROSS SECTION MC10 SHEET 37
3002750-XS-1338	CROSS SECTION MC10 SHEET 38
3002750-XS-1339	CROSS SECTION MC10 SHEET 39
3002750-XS-1340	CROSS SECTION MC10 SHEET 40
3002750-XS-1341	CROSS SECTION MC10 SHEET 41
3002750-XS-1342	CROSS SECTION MC10 SHEET 42
3002750-XS-1343	CROSS SECTION MC10 SHEET 43
3002750-XS-1344	CROSS SECTION MC10 SHEET 44
3002750-XS-1345	CROSS SECTION MC10 SHEET 45
3002750-XS-1346	CROSS SECTION MC10 SHEET 46
3002750-XS-1347	CROSS SECTION MC10 SHEET 47
3002750-XS-1348	CROSS SECTION MC10 SHEET 48
3002750-XS-1349	CROSS SECTION MC10 SHEET 49
3002750-XS-1350	CROSS SECTION MC10 SHEET 50
3002750-XS-1351	CROSS SECTION MC10 SHEET 51
3002750-XS-1352	CROSS SECTION MC10 SHEET 52
3002750-XS-1353	CROSS SECTION MC10 SHEET 53
3002750-XS-1354	CROSS SECTION MC10 SHEET 54
3002750-XS-1355	CROSS SECTION MC10 SHEET 55
3002750-XS-1356	CROSS SECTION MC10 SHEET 56
3002750-XS-1357	CROSS SECTION MC10 SHEET 57
3002750-XS-1358	CROSS SECTION MC10 SHEET 58
3002750-XS-1359	CROSS SECTION MC10 SHEET 59
3002750-XS-1360	CROSS SECTION MC10 SHEET 60
3002750-XS-1361	CROSS SECTION MC10 SHEET 61
3002750-XS-1362	CROSS SECTION MC10 SHEET 62
3002750-XS-1363	CROSS SECTION MC10 SHEET 63
3002750-XS-1364	CROSS SECTION MC10 SHEET 64
3002750-XS-1371	CROSS SECTION MC31 SHEET 1
3002750-XS-1372	CROSS SECTION MC31 SHEET 2
3002750-XS-1373	CROSS SECTION MC31 SHEET 3
<b>STORMWATER DRAINAGE</b>	
3002750-DD-1400	DRAINAGE COVER SHEET
3002750-DD-1401	DRAINAGE NOTES
3002750-DD-1402	DRAINAGE LEGEND
3002750-DD-1410	DRAINAGE SHEET 1
3002750-DD-1411	DRAINAGE SHEET 2
3002750-DD-1412	DRAINAGE SHEET 3
3002750-DD-1413	DRAINAGE SHEET 4
3002750-DD-1414	DRAINAGE SHEET 5
3002750-DD-1415	DRAINAGE SHEET 6
3002750-DD-1416	DRAINAGE SHEET 7
3002750-DD-1417	DRAINAGE SHEET 8
3002750-DD-1418	DRAINAGE SHEET 9
3002750-DD-1419	DRAINAGE SHEET 10
3002750-DD-1420	DRAINAGE SHEET 11
3002750-DD-1421	DRAINAGE SHEET 12
3002750-DD-1422	DRAINAGE SHEET 13
3002750-DD-1423	DRAINAGE SHEET 14
3002750-DD-1424	DRAINAGE SHEET 15
3002750-DD-1425	DRAINAGE SHEET 16
3002750-DD-1429	DRAINAGE SHEET 17
3002750-DD-1441	DRAINAGE DETAILS SHEET 1

DRAWING INDEX

DRAWING NUMBER	DRAWING TITLE
3002750-DD-1442	DRAINAGE DETAILS SHEET 2
3002750-DD-1443	DRAINAGE DETAILS SHEET 3
3002750-DD-1444	DRAINAGE DETAILS SHEET 4
3002750-DD-1445	DRAINAGE DETAILS SHEET 5
3002750-DD-1446	DRAINAGE DETAILS SHEET 6
3002750-DD-1451	DRAINAGE SCHEDULE SHEET 1
3002750-DD-1452	DRAINAGE SCHEDULE SHEET 2
3002750-DD-1453	DRAINAGE SCHEDULE SHEET 3
3002750-DD-1461	DRAINAGE SCOUR PROTECTION SCHEDULE
3002750-DD-1510	DRAINAGE LONGITUDINAL SECTION SHEET 1
3002750-DD-1511	DRAINAGE LONGITUDINAL SECTION SHEET 2
3002750-DD-1512	DRAINAGE LONGITUDINAL SECTION SHEET 3
3002750-DD-1513	DRAINAGE LONGITUDINAL SECTION SHEET 4
3002750-DD-1514	DRAINAGE LONGITUDINAL SECTION SHEET 5
3002750-DD-1515	DRAINAGE LONGITUDINAL SECTION SHEET 6
3002750-DD-1516	DRAINAGE LONGITUDINAL SECTION SHEET 7
3002750-DD-1517	DRAINAGE LONGITUDINAL SECTION SHEET 8
3002750-DD-1518	DRAINAGE LONGITUDINAL SECTION SHEET 9
3002750-DD-1519	DRAINAGE LONGITUDINAL SECTION SHEET 10
3002750-DD-1520	DRAINAGE LONGITUDINAL SECTION SHEET 11
3002750-DD-1521	DRAINAGE LONGITUDINAL SECTION SHEET 12
3002750-DD-1522	DRAINAGE LONGITUDINAL SECTION SHEET 13
3002750-DD-1523	DRAINAGE LONGITUDINAL SECTION SHEET 14
3002750-DD-1524	DRAINAGE LONGITUDINAL SECTION SHEET 15
3002750-DD-1525	DRAINAGE LONGITUDINAL SECTION SHEET 16
3002750-DD-1526	DRAINAGE LONGITUDINAL SECTION SHEET 17
3002750-DD-1527	DRAINAGE LONGITUDINAL SECTION SHEET 18
3002750-DD-1528	DRAINAGE LONGITUDINAL SECTION SHEET 19
3002750-DD-1529	DRAINAGE LONGITUDINAL SECTION SHEET 20
3002750-DD-1530	DRAINAGE LONGITUDINAL SECTION SHEET 21
3002750-DD-1531	DRAINAGE LONGITUDINAL SECTION SHEET 22
3002750-DD-1532	DRAINAGE LONGITUDINAL SECTION SHEET 23
3002750-DD-1533	DRAINAGE LONGITUDINAL SECTION SHEET 24
3002750-DD-1534	DRAINAGE LONGITUDINAL SECTION SHEET 25
3002750-DD-1535	DRAINAGE LONGITUDINAL SECTION SHEET 26
3002750-DD-1536	DRAINAGE LONGITUDINAL SECTION SHEET 27
3002750-DD-1537	DRAINAGE LONGITUDINAL SECTION SHEET 28
3002750-DD-1538	DRAINAGE LONGITUDINAL SECTION SHEET 29
3002750-DD-1539	DRAINAGE LONGITUDINAL SECTION SHEET 30
3002750-DD-1540	DRAINAGE LONGITUDINAL SECTION SHEET 31
3002750-DD-1541	DRAINAGE LONGITUDINAL SECTION SHEET 32
3002750-DD-1542	DRAINAGE LONGITUDINAL SECTION SHEET 33
3002750-DD-1543	DRAINAGE LONGITUDINAL SECTION SHEET 34
3002750-DD-1544	DRAINAGE LONGITUDINAL SECTION SHEET 35
<b>UTILITIES</b>	
3002750-UT-1600	UTILITIES COVER SHEET
3002750-UT-1601	UTILITIES NOTES AND LEGEND
3002750-UT-1610	UTILITIES SHEET 1
3002750-UT-1611	UTILITIES SHEET 2
3002750-UT-1612	UTILITIES SHEET 3
3002750-UT-1613	UTILITIES SHEET 4
3002750-UT-1614	UTILITIES SHEET 5
3002750-UT-1615	UTILITIES SHEET 6
3002750-UT-1616	UTILITIES SHEET 7

DRAWING INDEX

DRAWING NUMBER	DRAWING TITLE
3002750-UT-1617	UTILITIES SHEET 8
3002750-UT-1618	UTILITIES SHEET 9
3002750-UT-1619	UTILITIES SHEET 10
3002750-UT-1620	UTILITIES SHEET 11
3002750-UT-1621	UTILITIES SHEET 12
3002750-UT-1622	UTILITIES SHEET 13
3002750-UT-1623	UTILITIES SHEET 14
3002750-UT-1624	UTILITIES SHEET 15
3002750-UT-1625	UTILITIES SHEET 16
3002750-UT-1629	UTILITIES SHEET 17
<b>ITS</b>	
3002750-IT-1650	INTELLIGENT TRANSPORT SYSTEMS COVER SHEET
3002750-IT-1651	INTELLIGENT TRANSPORT SYSTEMS NOTES AND LEGEND
3002750-IT-1661	INTELLIGENT TRANSPORT SYSTEMS SHEET 1
3002750-IT-1662	INTELLIGENT TRANSPORT SYSTEMS SHEET 2
3002750-IT-1663	INTELLIGENT TRANSPORT SYSTEMS SHEET 3
3002750-IT-1664	INTELLIGENT TRANSPORT SYSTEMS SHEET 4
3002750-IT-1665	INTELLIGENT TRANSPORT SYSTEMS SHEET 5
3002750-IT-1666	INTELLIGENT TRANSPORT SYSTEMS SHEET 6
3002750-IT-1667	INTELLIGENT TRANSPORT SYSTEMS SHEET 7
3002750-IT-1668	INTELLIGENT TRANSPORT SYSTEMS SHEET 8
3002750-IT-1669	INTELLIGENT TRANSPORT SYSTEMS SHEET 9
3002750-IT-1670	INTELLIGENT TRANSPORT SYSTEMS SHEET 10
3002750-IT-1671	INTELLIGENT TRANSPORT SYSTEMS SHEET 11
3002750-IT-1672	INTELLIGENT TRANSPORT SYSTEMS SHEET 12
3002750-IT-1673	INTELLIGENT TRANSPORT SYSTEMS SHEET 13
3002750-IT-1674	INTELLIGENT TRANSPORT SYSTEMS SHEET 14
3002750-IT-1675	INTELLIGENT TRANSPORT SYSTEMS SHEET 15
3002750-IT-1676	INTELLIGENT TRANSPORT SYSTEMS SHEET 16
3002750-IT-1679	INTELLIGENT TRANSPORT SYSTEMS SHEET 17
<b>PAVEMENT</b>	
3002750-PV-1700	PAVEMENT COVER SHEET
3002750-PV-1701	PAVEMENT NOTES AND LEGEND
3002750-PV-1710	PAVEMENT PLAN SHEET 1
3002750-PV-1711	PAVEMENT PLAN SHEET 2
3002750-PV-1712	PAVEMENT PLAN SHEET 3
3002750-PV-1713	PAVEMENT PLAN SHEET 4
3002750-PV-1714	PAVEMENT PLAN SHEET 5
3002750-PV-1715	PAVEMENT PLAN SHEET 6
3002750-PV-1716	PAVEMENT PLAN SHEET 7
3002750-PV-1717	PAVEMENT PLAN SHEET 8
3002750-PV-1718	PAVEMENT PLAN SHEET 9
3002750-PV-1719	PAVEMENT PLAN SHEET 10
3002750-PV-1720	PAVEMENT PLAN SHEET 11
3002750-PV-1721	PAVEMENT PLAN SHEET 12
3002750-PV-1722	PAVEMENT PLAN SHEET 13
3002750-PV-1723	PAVEMENT PLAN SHEET 14
3002750-PV-1724	PAVEMENT PLAN SHEET 15
3002750-PV-1725	PAVEMENT PLAN SHEET 16

**UNCONTROLLED COPY**  
**Check Print**  
**NOT FOR CONSTRUCTION**

150 mm ON ORIGINAL

DRAWING FILE LOCATION / NAME V:\_Vault\Projects\3002750\CAD\DWG\01_GE_General\3002750-GE-0011.dwg		PLOT DATE 27 May 2022	TIME 09:19:36
EXTERNAL REFERENCE FILES	REV	DATE	AMENDMENT / REVISION DESCRIPTION
	A	19.06.2020	PRELIMINARY SKETCH PLAN
	B	08.10.2020	PRELIMINARY SKETCH PLAN
	C	13.11.2020	PRELIMINARY SKETCH PLAN SUBMISSION
	D	27.05.2022	DETAIL FOR DESIGN SPALLS AND PATH ALIGNMENT DRAWINGS

WVR No.	APPROVAL	TITLE	NAME
0007	DK	DRAFTER	L. HESLOP
0014	DK	DRAFTING CHECK	R. GOOSEN
0015	DK	DESIGNER	B. LEJANO
0	DK	DESIGN CHECK	T. MEADOWS
		PROJECT MANAGER	K. DECANHA
		PROJECT DIRECTOR	D. KEEP

SCALES AT A1 SIZE DRAWING

DESIGNER



Member of the Surbana Jurong Group  
ABN 47 065 475 149

LEVEL 9, 12 MOORE STREET  
CANBERRA ACT 2601 AUSTRALIA  
SMC PROJECT No 3002750

DR

<b>CHECK PRINT</b>		PRELIM <input type="checkbox"/>	FINAL <input type="checkbox"/>
DISCIPLINE		INITIAL	DATE
DISCIPLINE			
DISCIPLINE			
DISCIPLINE			
BACKDRAFTED/CORRECTED			
CONFIRMED			

PROJECT TITLE WILLIAM HOVELL DRIVE DUPLICATION		INDEX SHEET 2	
SCALE AS SHOWN	PHASE PSP	PROJECT / DRAWING No 3002750-GE-0011	REVISION C.1

DRAWING INDEX

DRAWING NUMBER	DRAWING TITLE
3002750-PV-1729	PAVEMENT PLAN SHEET 17
3002750-PV-1731	PAVEMENT DETAILS SHEET 1
3002750-PV-1732	PAVEMENT DETAILS SHEET 2
3002750-PV-1733	PAVEMENT DETAILS SHEET 3
3002750-PV-1733	PAVEMENT DETAILS SHEET 4
3002750-PV-1734	PAVEMENT DETAILS SHEET 5
3002750-PV-1735	PAVEMENT DETAILS SHEET 6
3002750-PV-1736	PAVEMENT DETAILS SHEET 7
TRAFFIC CONTROL DEVICES	
3002750-TCD-1800	TRAFFIC CONTROL DEVICES SIGNS & LINEMARKING KEY PLAN & DRAWING INDEX
3002750-TCD-1801	TRAFFIC CONTROL DEVICES SIGNS & LINEMARKING GENERAL NOTES & LEGEND
3002750-TCD-1811	TRAFFIC CONTROL DEVICES DEMOLITION PLAN SHEET 1
3002750-TCD-1812	TRAFFIC CONTROL DEVICES DEMOLITION PLAN SHEET 2
3002750-TCD-1813	TRAFFIC CONTROL DEVICES DEMOLITION PLAN SHEET 3
3002750-TCD-1814	TRAFFIC CONTROL DEVICES DEMOLITION PLAN SHEET 4
3002750-TCD-1815	TRAFFIC CONTROL DEVICES DEMOLITION PLAN SHEET 5
3002750-TCD-1816	TRAFFIC CONTROL DEVICES DEMOLITION PLAN SHEET 6
3002750-TCD-1817	TRAFFIC CONTROL DEVICES DEMOLITION PLAN SHEET 7
3002750-TCD-1818	TRAFFIC CONTROL DEVICES DEMOLITION PLAN SHEET 8
3002750-TCD-1819	TRAFFIC CONTROL DEVICES DEMOLITION PLAN SHEET 9
3002750-TCD-1820	TRAFFIC CONTROL DEVICES DEMOLITION PLAN SHEET 10
3002750-TCD-1821	TRAFFIC CONTROL DEVICES DEMOLITION PLAN SHEET 11
3002750-TCD-1822	TRAFFIC CONTROL DEVICES DEMOLITION PLAN SHEET 12
3002750-TCD-1823	TRAFFIC CONTROL DEVICES DEMOLITION PLAN SHEET 13
3002750-TCD-1824	TRAFFIC CONTROL DEVICES DEMOLITION PLAN SHEET 14
3002750-TCD-1825	TRAFFIC CONTROL DEVICES DEMOLITION PLAN SHEET 15
3002750-TCD-1826	TRAFFIC CONTROL DEVICES DEMOLITION PLAN SHEET 16
3002750-TCD-1827	TRAFFIC CONTROL DEVICES DEMOLITION PLAN SHEET 17
3002750-TCD-1828	TRAFFIC CONTROL DEVICES SIGN SCHEDULE TO BE REMOVED
3002750-TCD-1831	TRAFFIC CONTROL DEVICES SIGNS & LINEMARKING SHEET 1
3002750-TCD-1832	TRAFFIC CONTROL DEVICES SIGNS & LINEMARKING SHEET 2
3002750-TCD-1833	TRAFFIC CONTROL DEVICES SIGNS & LINEMARKING SHEET 3
3002750-TCD-1834	TRAFFIC CONTROL DEVICES SIGNS & LINEMARKING SHEET 4
3002750-TCD-1835	TRAFFIC CONTROL DEVICES SIGNS & LINEMARKING SHEET 5
3002750-TCD-1836	TRAFFIC CONTROL DEVICES SIGNS & LINEMARKING SHEET 6
3002750-TCD-1837	TRAFFIC CONTROL DEVICES SIGNS & LINEMARKING SHEET 7
3002750-TCD-1838	TRAFFIC CONTROL DEVICES SIGNS & LINEMARKING SHEET 8
3002750-TCD-1839	TRAFFIC CONTROL DEVICES SIGNS & LINEMARKING SHEET 9
3002750-TCD-1840	TRAFFIC CONTROL DEVICES SIGNS & LINEMARKING SHEET 10
3002750-TCD-1841	TRAFFIC CONTROL DEVICES SIGNS & LINEMARKING SHEET 11
3002750-TCD-1842	TRAFFIC CONTROL DEVICES SIGNS & LINEMARKING SHEET 12
3002750-TCD-1843	TRAFFIC CONTROL DEVICES SIGNS & LINEMARKING SHEET 13
3002750-TCD-1844	TRAFFIC CONTROL DEVICES SIGNS & LINEMARKING SHEET 14
3002750-TCD-1845	TRAFFIC CONTROL DEVICES SIGNS & LINEMARKING SHEET 15
3002750-TCD-1846	TRAFFIC CONTROL DEVICES SIGNS & LINEMARKING SHEET 16
3002750-TCD-1847	TRAFFIC CONTROL DEVICES SIGNS & LINEMARKING SHEET 17
3002750-TCD-1848	TRAFFIC CONTROL DEVICES SIGN SCHEDULE TO BE ERRECTED
3002750-TCS-1851	TRAFFIC CONTROL DEVICES DRAKE BROCKMAN / WILLIAM HOVELL CABLE & LOOP LAYOUT
3002750-TCS-1852	TRAFFIC CONTROL DEVICES DRAKE BROCKMAN / WILLIAM HOVELL HARDWARE LAYOUT
3002750-WS-023	PROPOSED DN300 AND DN100 WATER MAIN GENERAL ARRANGEMENT & LONGITUDINAL SECTION SHEET 4 of 6
3002750-WS-024	PROPOSED DN600 WATER MAIN GENERAL ARRANGEMENT, LONGITUDINAL SECTION & CROSS SECTION SHEET 5 of 6

DRAWING INDEX

DRAWING NUMBER	DRAWING TITLE
3002750-WS-025	PROPOSED DN900 WATER MAIN REPLACEMENT GENERAL ARRANGEMENT SHEET 6 of 6
TRAFFIC CONTROL DEVICES	
3002750-TCD-8100	TRAFFIC CONTROL DEVICES SIGNS & LINEMARKING KEY PLAN & DRAWING INDEX
3002750-TCD-8101	TRAFFIC CONTROL DEVICES SIGNS & LINEMARKING GENERAL NOTES & LEGEND
3002750-TCD-8111	TRAFFIC CONTROL DEVICES DEMOLITION PLAN SHEET 1
3002750-TCD-8112	TRAFFIC CONTROL DEVICES DEMOLITION PLAN SHEET 2
3002750-TCD-8113	TRAFFIC CONTROL DEVICES DEMOLITION PLAN SHEET 3
3002750-TCD-8114	TRAFFIC CONTROL DEVICES DEMOLITION PLAN SHEET 4
3002750-TCD-8115	TRAFFIC CONTROL DEVICES DEMOLITION PLAN SHEET 5
3002750-TCD-8116	TRAFFIC CONTROL DEVICES DEMOLITION PLAN SHEET 6
3002750-TCD-8117	TRAFFIC CONTROL DEVICES DEMOLITION PLAN SHEET 7
3002750-TCD-8118	TRAFFIC CONTROL DEVICES DEMOLITION PLAN SHEET 8
3002750-TCD-8131	TRAFFIC CONTROL DEVICES SIGNS & LINEMARKING SHEET 1
3002750-TCD-8132	TRAFFIC CONTROL DEVICES SIGNS & LINEMARKING SHEET 2
3002750-TCD-8133	TRAFFIC CONTROL DEVICES SIGNS & LINEMARKING SHEET 3
3002750-TCD-8134	TRAFFIC CONTROL DEVICES SIGNS & LINEMARKING SHEET 4

DRAWING INDEX

DRAWING NUMBER	DRAWING TITLE
3002750-TCD-8135	TRAFFIC CONTROL DEVICES SIGNS & LINEMARKING SHEET 5
3002750-TCD-8136	TRAFFIC CONTROL DEVICES SIGNS & LINEMARKING SHEET 6
3002750-TCD-8137	TRAFFIC CONTROL DEVICES SIGNS & LINEMARKING SHEET 7
3002750-TCD-8138	TRAFFIC CONTROL DEVICES SIGNS & LINEMARKING SHEET 8
3002750-TCS-8151	TRAFFIC CONTROL DEVICES JOHN GORTON DR/ WILLIAM HOVELL DR CABLE & LOOP LAYOUT
3002750-TCS-8152	TRAFFIC CONTROL DEVICES JOHN GORTON DR / WILLIAM HOVELL DR HARDWARE LAYOUT
3002750-TCS-8161	TRAFFIC CONTROL DEVICES COULTER DR / WILLIAM HOVELL DR CABLE & LOOP LAYOUT
3002750-TCS-8162	TRAFFIC CONTROL DEVICES COULTER DR / WILLIAM HOVELL DR HARDWARE LAYOUT
3002750-TCS-8171	TRAFFIC CONTROL DEVICES BINDUBI ST / WILLIAM HOVELL DR CABLE & LOOP LAYOUT
3002750-TCS-8172	TRAFFIC CONTROL DEVICES BINDUBI ST / WILLIAM HOVELL DR HARDWARE LAYOUT
STREET LIGHTING	
120114-E100	STREETLIGHTING SHEET 1 ELECTRICAL SERVICES
120114-E101	STREETLIGHTING SHEET 2 ELECTRICAL SERVICES
120114-E102	STREETLIGHTING SHEET 3 ELECTRICAL SERVICES
120114-E103	STREETLIGHTING SHEET 4 ELECTRICAL SERVICES
120114-E104	STREETLIGHTING SHEET 5 ELECTRICAL SERVICES
120114-E105	STREETLIGHTING SHEET 6 ELECTRICAL SERVICES
120114-E106	STREETLIGHTING SHEET 7 ELECTRICAL SERVICES
120114-E107	STREETLIGHTING SHEET 8 ELECTRICAL SERVICES
120114-E108	STREETLIGHTING SHEET 9 ELECTRICAL SERVICES
120114-E109	STREETLIGHTING SHEET 10 ELECTRICAL SERVICES
120114-E110	STREETLIGHTING SHEET 11 ELECTRICAL SERVICES
120114-E111	STREETLIGHTING SHEET 12 ELECTRICAL SERVICES
120114-E112	STREETLIGHTING SHEET 13 ELECTRICAL SERVICES
120114-E113	STREETLIGHTING SHEET 14 ELECTRICAL SERVICES
120114-E114	STREETLIGHTING SHEET 15 ELECTRICAL SERVICES
120114-E115	STREETLIGHTING SHEET 16 ELECTRICAL SERVICES
120114-E116	STREETLIGHTING SHEET 17 ELECTRICAL SERVICES
120114-E117	STREETLIGHTING SHEET 18 ELECTRICAL SERVICES
LANDSCAPING	
1847-LCO-00	LANDSCAPE COVER PAGE
1847-LCO-01	LANDSCAPE NOTES SCHEDULES
1847-TR01	TREE REMOVAL PLAN SHEET 1 OF 17
1847-TR02	TREE REMOVAL PLAN SHEET 2 OF 17
1847-TR03	TREE REMOVAL PLAN SHEET 3 OF 17
1847-TR04	TREE REMOVAL PLAN SHEET 4 OF 17
1847-TR05	TREE REMOVAL PLAN SHEET 5 OF 17
1847-TR06	TREE REMOVAL PLAN SHEET 6 OF 17
1847-TR07	TREE REMOVAL PLAN SHEET 7 OF 17
1847-TR08	TREE REMOVAL PLAN SHEET 8 OF 17
1847-TR09	TREE REMOVAL PLAN SHEET 9 OF 17
1847-TR10	TREE REMOVAL PLAN SHEET 10 OF 17
1847-TR11	TREE REMOVAL PLAN SHEET 11 OF 17
1847-TR12	TREE REMOVAL PLAN SHEET 12 OF 17
1847-TR13	TREE REMOVAL PLAN SHEET 13 OF 17
1847-TR14	TREE REMOVAL PLAN SHEET 14 OF 17
1847-TR15	TREE REMOVAL PLAN SHEET 15 OF 17
1847-TR16	TREE REMOVAL PLAN SHEET 16 OF 17
1847-TR17	TREE REMOVAL PLAN SHEET 17 OF 17
1847-LP01	LANDSCAPE PLAN SHEET 1 OF 17
1847-LP02	LANDSCAPE PLAN SHEET 2 OF 17
1847-LP03	LANDSCAPE PLAN SHEET 3 OF 17
1847-LP04	LANDSCAPE PLAN SHEET 4 OF 17

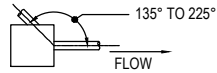
UNCONTROLLED COPY  
Check Print  
NOT FOR CONSTRUCTION

150 mm ON ORIGINAL  
A1

DRAWING FILE LOCATION / NAME V:\Vault\Projects\3002750\CAD\DWG\01_GE_General\3002750-GE-0012.dwg		PLOT DATE 27 May 2022		TIME 09:19:57																																								
EXTERNAL REFERENCE FILES		REV	DATE	AMENDMENT / REVISION DESCRIPTION	WVR No.	APPROVAL	TITLE	NAME	SCALES AT A1 SIZE DRAWING	DESIGNER	<div style="display: flex; align-items: center;"> <div> <p><b>SMEC</b></p> <p>Member of the Surlana Jurong Group</p> <p>ABN 47 065 475 149</p> <p>LEVEL 9, 12 MOORE STREET CANBERRA ACT 2601 AUSTRALIA SMEC PROJECT No 3002750</p> </div> </div>		<table border="1" style="width: 100%; border-collapse: collapse;"> <tr> <th colspan="2">CHECK PRINT</th> <th>PRELIM</th> <th>FINAL</th> </tr> <tr> <td>DISCIPLINE</td> <td></td> <td><input type="checkbox"/></td> <td><input type="checkbox"/></td> </tr> <tr> <td>DISCIPLINE</td> <td></td> <td><input type="checkbox"/></td> <td><input type="checkbox"/></td> </tr> <tr> <td>DISCIPLINE</td> <td></td> <td><input type="checkbox"/></td> <td><input type="checkbox"/></td> </tr> <tr> <td>DISCIPLINE</td> <td></td> <td><input type="checkbox"/></td> <td><input type="checkbox"/></td> </tr> <tr> <td>BACKDRAFTED/CORRECTED</td> <td></td> <td><input type="checkbox"/></td> <td><input type="checkbox"/></td> </tr> <tr> <td>CONFIRMED</td> <td></td> <td><input type="checkbox"/></td> <td><input type="checkbox"/></td> </tr> </table>		CHECK PRINT		PRELIM	FINAL	DISCIPLINE		<input type="checkbox"/>	<input type="checkbox"/>	DISCIPLINE		<input type="checkbox"/>	<input type="checkbox"/>	DISCIPLINE		<input type="checkbox"/>	<input type="checkbox"/>	DISCIPLINE		<input type="checkbox"/>	<input type="checkbox"/>	BACKDRAFTED/CORRECTED		<input type="checkbox"/>	<input type="checkbox"/>	CONFIRMED		<input type="checkbox"/>	<input type="checkbox"/>	PROJECT TITLE WILLIAM HOVELL DRIVE DUPLICATION	
CHECK PRINT		PRELIM	FINAL																																									
DISCIPLINE		<input type="checkbox"/>	<input type="checkbox"/>																																									
DISCIPLINE		<input type="checkbox"/>	<input type="checkbox"/>																																									
DISCIPLINE		<input type="checkbox"/>	<input type="checkbox"/>																																									
DISCIPLINE		<input type="checkbox"/>	<input type="checkbox"/>																																									
BACKDRAFTED/CORRECTED		<input type="checkbox"/>	<input type="checkbox"/>																																									
CONFIRMED		<input type="checkbox"/>	<input type="checkbox"/>																																									
<div style="display: flex; justify-content: space-between;"> <div> <p>REVISION IN PROGRESS</p> </div> <div style="text-align: center;"> <p>INDEX SHEET 3</p> </div> <div> <p>SCALE AS SHOWN</p> </div> <div> <p>PHASE PSP</p> </div> <div> <p>PROJECT / DRAWING No 3002750-GE-0012</p> </div> <div> <p>REVISION C.1</p> </div> </div>																																												

**GENERAL:**

- DIMENSIONS ARE IN MILLIMETRES UNLESS NOTED OTHERWISE.
- DIMENSIONS SHOWN FOR PIPES REFER TO THE NOMINAL PIPE DIAMETER IN MILLIMETRES
- DIMENSIONS SHOWN FOR BOX CULVERTS REFER TO THE BOX CULVERT'S NOMINAL INTERNAL HEIGHT x SPAN IN MILLIMETRES
- STATIONS AND REDUCED LEVELS ARE IN METRES.
- REDUCED LEVELS ARE RELATED TO THE AUSTRALIAN HEIGHT DATUM.
- THE CO-ORDINATE SYSTEM USED IN ALL DRAWINGS IS THE CANBERRA MAP GRID (STROMLO).
- ALL LOCATIONS, ORIENTATION AND LEVELS SHALL BE VERIFIED ON SITE BEFORE COMMENCING ANY WORK. DO NOT OBTAIN DIMENSIONS FROM SCALING. EXISTING SURFACE LEVELS ON THE DRAWINGS ARE INDICATIVE ONLY. REFER DISCREPANCIES TO THE PRINCIPAL AUTHORISED PERSON.
- THE DOCUMENTED DRAINAGE SYSTEM IS DETAILED ONLY FOR THE PERMANENT ROAD CONFIGURATION UNLESS NOTED OTHERWISE. CONSTRUCTION DRAINAGE SHALL BE THE CONTRACTOR'S RESPONSIBILITY.
- PIPES THROUGH PITS ARE TO BE ALIGNED WITH THE UPSTREAM PIPE CENTRELINE TO THE OUTLET PIPE CENTRELINE AT DOWNSTREAM PIT FACE AS SHOWN:



- ANY PERMITS FOR DIVERSION WORKS REQUIRED DURING CONSTRUCTION SHALL BE OBTAINED PRIOR TO CONSTRUCTION WORKS.
- EXISTING STORMWATER DRAINAGE PIPES, PITS AND MANHOLES WITHIN THE LIMIT OF WORKS SHALL BE REMOVED OR MODIFIED AS SPECIFIED. ANY EXPOSED EXISTING REINFORCEMENT TO BE PROTECTED IN ACCORDANCE WITH REQUIREMENTS FOR NEW CONSTRUCTION.

**SERVICES:**

- ALL EXISTING SERVICE LOCATIONS SHOWN ON DRAWINGS ARE INDICATIVE ONLY AND ARE TO BE VERIFIED BY THE CONTRACTOR PRIOR TO ANY CONSTRUCTION.
- THE CONTRACTOR SHALL BE RESPONSIBLE FOR THE PROTECTION OF EXISTING SERVICES DURING CONSTRUCTION.
- THE CONTRACTOR SHALL SET OUT THE WORKS PRIOR TO EXCAVATION. WHERE A CONFLICT OR INCONSISTENCY BECOMES APPARENT THE CONTRACTOR SHALL NOTIFY THE PRINCIPAL AUTHORISED PERSON IMMEDIATELY.
- ALL DISTURBED SURFACES FOR TEMPORARY WORKS ARE TO BE RE-INSTATED TO ORIGINAL CONDITION, UNLESS NOTED OTHERWISE.
- ALL SERVICES TRENCHES IN EXISTING PAVEMENT OR IN AREAS WITHIN 1m OF THE UNDERSIDE OF PAVEMENT FORMATION WHERE NEW PAVEMENT IS TO BE CONSTRUCTED SHALL BE BACKFILLED WITH DGS20 COMPACTED TO 95% MMDD.
- LOCATION AND LEVEL OF ALL SERVICES CROSSINGS OF PROPOSED WORKS MUST BE CHECKED FOR CONFLICT WITH EXISTING SERVICES. ANY CONFLICTS TO BE RESOLVED WITH THE PRINCIPAL AUTHORISED PERSON.
- WORK BENEATH OVERHEAD AND OVER UNDERGROUND POWERLINES TO BE UNDERTAKEN WITH RELEVANT AUTHORITY REQUIREMENTS AND IN ACCORDANCE WITH THE "WORKING IN THE VICINITY OF OVERHEAD AND UNDERGROUND ELECTRICAL LINES" CODE OF PRACTICE FROM WORKSAFE AUSTRALIA.

**SAFETY BARRIERS AND KERBS**

- NON-FRANGIBLE ROAD FURNITURE IS TO BE PLACED OUTSIDE THE CLEAR ZONE OR PROTECTED BY SAFETY BARRIER.
- STEEL WIRE ROPE SAFETY BARRIER SHALL BE SUITABLE FOR IMPACT FROM BOTH SIDES WHERE THE CLEAR MEDIAN WIDTH IS LESS THAN 12m.
- FOR STANDARD TYPE 'F' BARRIER AND 'SO' KERB SHAPES REFER RMS MODEL DRAWING R0300-01.
- FOR ALL OTHER STANDARD KERB SHAPES REFER TCCS STANDARD DRG No. DS3-01.
- FOR TYPE 'F' SS (SINGLE SIDED) BARRIER DETAILS REFER RMS MODEL DRAWING R0720-05.
- FOR TYPE 'F' SLOPED END TERMINAL REFER RMS MODEL DRAWING MD.R132.G04.B FOR PRE-CAST BARRIER REFER RMS MODEL DRAWING MD.R132.G06.A.1 FOR CAST IN-SITU INSTALLATIONS.
- FOR G4 GUARDRAIL MELT AND TT TERMINAL TYPES REFER RMS MODEL DRAWING MD.R132.G01.B AND MDR132.G03.A.2

**PAVEMENT NOTES:**

- PAVEMENT PROFILES ARE PROVIDED ON DRG 3002750-PV-1731.
- PAVEMENT INTERFACE JOINTS SHALL BE LOCATED OUTSIDE VEHICULAR WHEEL PATHS.
- THE NOMINATED THICKNESS OF A LAYER OF DENSE GRADED ASPHALT MUST BE WITHIN THE LIMITS SPECIFIED IN TCCS SPECIFICATION. LAYER THICKNESS SHOULD EXCEED THE MAXIMUM NOMINAL STONE SIZE BY AT LEAST 3.0 TIMES, BUT NO MORE THAN 5 TIMES. NOMINAL LAYER THICKNESS TO BE IN ACCORDANCE WITH TCCS SPECIFICATIONS

NOMINAL AGGREGATE SIZE (mm)	RECOMMENDED THICKNESS (mm)
7	20
10	30
14	45
20	75

- IF UNSUITABLE SUBGRADE MATERIALS IS ENCOUNTERED ONE OF THE FOLLOWING MEASURES ARE TO BE EMPLOYED, SUBJECT TO APPROVAL:

- DRAINAGE AND DRYING OF THE INSITU MATERIAL
- EXCAVATION AND REPLACEMENT OF SOFT MATERIAL WITH SELECT MATERIAL
- STABILISATION OF TOP 300mm SUBGRADE MATERIAL WITH QUICK LIME OR CEMENT
- PROVISION OF A WORKING PLATFORM OF CEMENT TREATED MATERIAL
- USE OF GEOTEXTILES
- ALL WORKS IN ACCORDANCE WITH RMS SPECIFICATION R44.

- THE AGGREGATE SPREAD RATE AND BINDER APPLICATION RATE FOR SPRAYED SEALS ARE SUBJECT TO APPROVAL BY PRINCIPAL AUTHORITY PERSON.
- QUICK DRY PRIME (QDP) TO BE CONSTRUCTED TO MANUFACTURERS SPECIFICATIONS
- PRIME, AMC00, AMC4 AND AMC7 TO BE CONSTRUCTED IN ACCORDANCE WITH RMS SPECIFICATION R106

**FENCING**

- WHERE PROPOSED FENCING OVERLAPS WITH EXISTING, THE EXISTING FENCE CAN BE RETAINED IF THE FENCE MEETS THE FOLLOWING CRITERIA:
  - PROVIDES CLEAR PHYSICAL BOUNDARY FOR PEOPLE.
  - PERFORMS INTENDED CATTLE PROOF FUNCTION.
- REMOVE ALL EXISTING FENCES WITHIN THE PERMANENT FENCE BOUNDARY UNLESS OTHERWISE STATED.
- CONSTRUCT GATES IN ACCORDANCE WITH STD DWG R0800-04.

**EROSION AND SEDIMENT CONTROL**

- ALL EROSION AND SEDIMENT CONTROLS ARE TO BE CONSTRUCTED ACCORDING TO THE BEST PRACTICE REQUIREMENTS OF "MANAGING URBAN STORMWATER: SOILS AND CONSTRUCTION - BLUE BOOK" LANDCOM 4TH ED MARCH 2004 AND VOLUME 2 - MAIN ROAD CONSTRUCTION
- EXAMPLE EROSION AND SEDIMENT CONTROL MEASURES FOR CONSTRUCTION ARE PROVIDED. THESE ARE PRINCIPLE EXAMPLES FOR REFERENCE AND REQUIRE FURTHER DETAIL FOR CONSTRUCTION ACTIVITIES.
- PROGRESSIVE EROSION AND SEDIMENT CONTROL PLANS (PESCP'S) FOR ALL STAGES OF THE PROJECT ARE TO BE PREPARED AND IMPLEMENTED PRIOR TO COMMENCEMENT OF CONSTRUCTION.
- THE PESCP'S SHOULD DETAIL CONTROLS SUCH AS SEDIMENT FENCES, DIVERSION DRAINS, DRAIN LINES, SAND BAGS AND GRAVEL BAGS.
- REDUCE THE AREA OF SOIL DISTURBANCE BY RETAINING VEGETATION, STAGING WORKS AND BY MINIMISING THE CONSTRUCTION FOOTPRINT.
- PROGRESSIVELY REVEGETATE OR STABILISE DISTURBED AREAS SUCH AS TEMPORARY TOPSOIL STOCKPILES, VERGES AND BATTERS.
- STOCKPILES ARE TO BE STABILISED IF LEFT FOR 2 WEEKS OR MORE.
- PRIOR TO ANY WORKS, INSTALL DIVERSION DRAINS, SEDIMENTATION PONDS AND OTHER SURFACE RUNOFF CONTROL MEASURES TO CONTROL RUNOFF ONTO, ACROSS AND FROM THE SITE; AND TO TRAP SEDIMENT.
- PROVIDE FOR RAINFALL EVENTS BY ENSURING THE FUNCTIONALITY AND CAPACITY OF EROSION AND SEDIMENT CONTROL, PROVIDING ADDITIONAL CONTROLS WHERE REQUIRED, STABILISING BARE GROUND AND TEMPORARY STOCKPILES AND AVOIDING GROUND DISTURBANCE.
- INSPECT AND MAINTAIN ALL EROSION AND SEDIMENT CONTROLS DAILY AND WITHIN 24 HOURS OF RAINFALL EVENTS.
- INTERCEPT OFFSITE SURFACE FLOW AND DIVERT OR ALLOW THROUGH CROSS DRAINAGE PIPES/CULVERTS WITHOUT MIXING WITH CONSTRUCTION RUNOFF.
- IN AREAS OF HIGH VELOCITY RUNOFF, REDUCE FLOW VELOCITIES USING APPROPRIATE MEASURES SUCH AS CHECK DAMS AND DIVERT TO STABLE LOCATIONS OR CONTROLS.
- ENSURE CONSTRUCTION RUNOFF DOES NOT DIRECTLY DISCHARGE FROM SITE. USE SEDIMENT CONTROLS TO FILTER RUNOFF BEFORE DISCHARGING.
- ALL OPEN DRAINAGE CHANNELS ARE TO BE LINED WITH MATERIAL SUCH AS GEO-FABRIC JUTE MESH OR SOIL STABILISING AGENT.
- CHECK DAMS ARE TO BE INSTALLED AT APPROPRIATE INTERVALS ALONG LINED DRAINAGE CHANNELS TO REDUCE EROSION POTENTIAL OF THE FLOW.
- ENSURE THAT THE SOIL AND WATER MANAGEMENT PLAN DESCRIBES THE MANAGEMENT OF TEMPORARY CONSTRUCTION PONDS, INCLUDING ACCEPTED WATER QUALITY PRACTICES AND STANDARDS SUCH AS FLOCCULATION AND SETTLING, TESTING FOR TSS, TURBIDITY, PH, OIL AND GREASE, DEWATERING AND DOCUMENTATION OF RESULTS.
- DURING ALL STAGES OF CONSTRUCTION. IN CATCHMENTS WHERE SEDIMENT PONDS ARE LOCATED, CONSTRUCTION RUNOFF IS TO BE DIVERTED TO SEDIMENT PONDS VIA DIVERSION DRAINS, TEMPORARY CATCH DRAINS, AND PERMANENT OR TEMPORARY DRAINAGE PIPES OR SIMILAR.
- LOCATION AND DESIGN OF SEDIMENT PONDS TO BE CONFIRMED ON SITE AND MODIFIED AS REQUIRED.

**EARTHWORKS NOTES**

- SOFT GROUND ENCOUNTERED IN ACCESS ROADS PLATFORMS SHALL BE STABILISED USING ROCKFILL/ EARTHFILL OR OTHER APPROVED TREATMENTS.
- TEMPORARY BATTER SLOPES SHALL NOT BE STEEPER THAN 1V:2H.
- IN ADDITION TO TEMPORARY SITE DRAINAGE THE CONTRACTOR SHALL BE RESPONSIBLE FOR DEWATERING IF REQUIRED DURING REMOVAL AND REPLACEMENT OF INSITU MATERIAL.

**FOUNDATION AND EARTHWORKS NOTES**

- PRIOR TO THE PLACEMENT OF ANY FILL ALL FOUNDATIONS FOR EARTHWORKS SHALL BE INSPECTED AND APPROVED BY THE SITE GEOTECHNICAL REPRESENTATIVE.

150 mm ON ORIGINAL  
A1  
3002750\_SMEC.dwg  
V:\Vault\Projects\3002750\CAD\DWG\01\_GE\_General\3002750-GE-0020.dwg

REV	DATE	AMENDMENT / REVISION DESCRIPTION	WVR No.	APPROVAL	TITLE	NAME
A	19.06.2020	PRELIMINARY SKETCH PLAN	0007	DK	DRAFTER	L. HESLOP
B	08.10.2020	PRELIMINARY SKETCH PLAN	0014	DK	DRAFTING CHECK	R. GOOSEN
C	13.11.2020	PRELIMINARY SKETCH PLAN	0015	DK	DESIGNER	B. LEJANO
D	27.05.2022	DETAIL FOR DESIGN SHOWN ON PATH ALIGNMENT DRAWINGS	0	DK	DESIGN CHECK	T. MEADOWS
					PROJECT MANAGER	K. DECANHA
					PROJECT DIRECTOR	D. KEEP

DESIGNER	SCALES AT A1 SIZE DRAWING
<p>Member of the Surbana Jurong Group ABN 47 065 475 149</p> <p>LEVEL 9, 12 MOORE STREET CANBERRA ACT 2601 AUSTRALIA SMEC PROJECT No 3002750</p>	

PROJECT	PRELIM	FINAL	PROJECT TITLE
CHECK PRINT	<input type="checkbox"/>	<input type="checkbox"/>	WILLIAM HOVELL DRIVE DUPLICATION
DISCIPLINE	INITIAL	DATE	
DISCIPLINE			
DISCIPLINE			
DISCIPLINE			
BACKDRAFTED/CORRECTED			
CONFIRMED			

SCALE	PHASE	PROJECT / DRAWING No.	REVISION
AS SHOWN	PSP	3002750-GE-0020	C.1

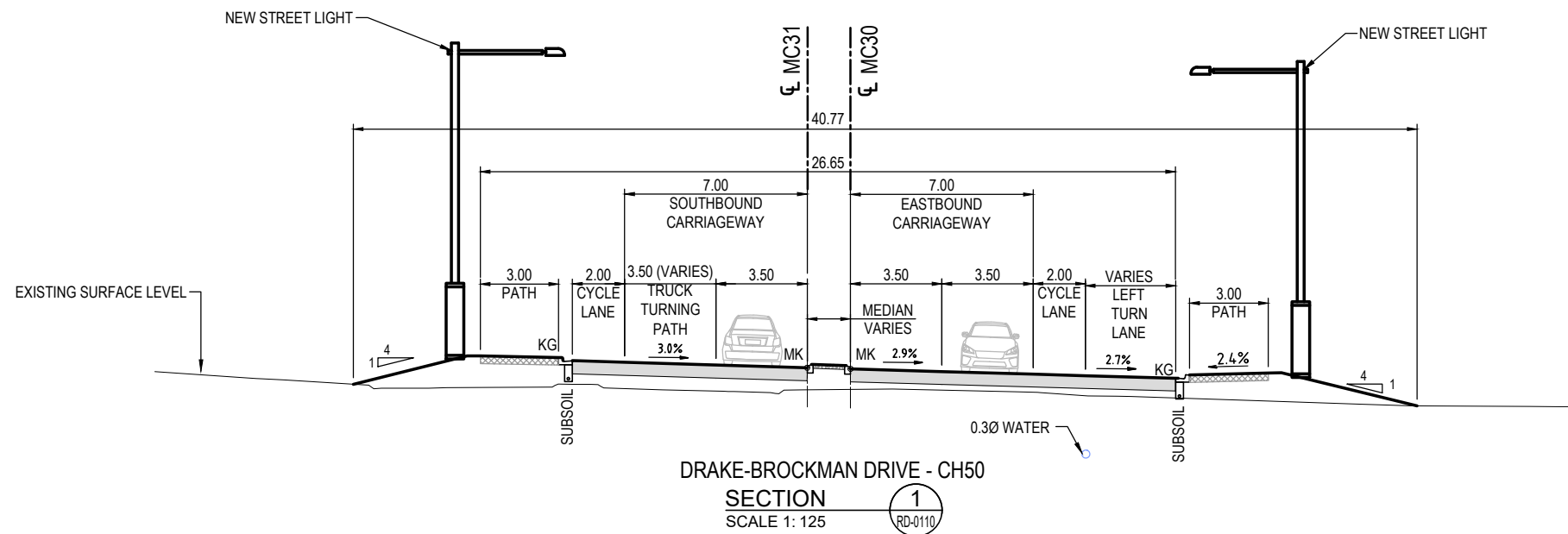
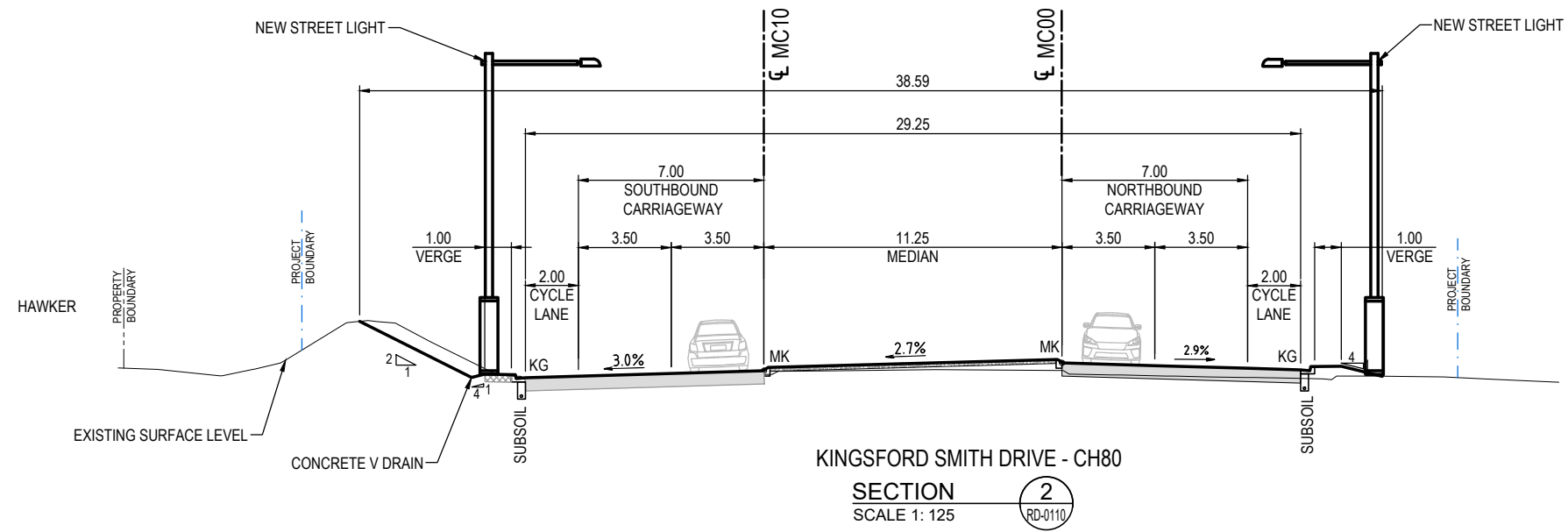
SCALE	PHASE	PROJECT / DRAWING No.	REVISION
AS SHOWN	PSP	3002750-GE-0020	C.1

UNCONTROLLED COPY  
Check Print  
NOT FOR CONSTRUCTION

DR

GENERAL NOTES SHEET 1

NOTE:  
DIMENSIONS ARE IN METRES

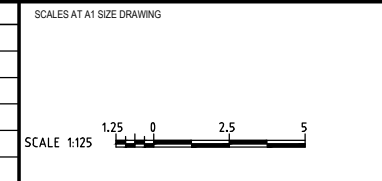


**UNCONTROLLED COPY**  
**Check Print**  
**NOT FOR CONSTRUCTION**

150 mm ON ORIGINAL  
A1

DRAWING FILE LOCATION / NAME V:\Vault\Projects\3002750\CAD\DWG\01_GE_General\3002750-GE-0031.dwg		PLOT DATE 27 May 2022		TIME 09:20:40	
REV	DATE	AMENDMENT / REVISION DESCRIPTION	WVR No.	APPROVAL	TITLE
A	19.06.2020	PRELIMINARY SKETCH PLAN	0007	DK	DRAFTER <i>L. HESLOP</i>
B	08.10.2020	PRELIMINARY SKETCH PLAN	0014	DK	DRAFTING CHECK <i>R. GOOSEN</i>
C	13.11.2020	PRELIMINARY SKETCH PLAN SUBMISSION	0015	DK	DESIGNER <i>B. LEJANO</i>
D	27.05.2022	DETAIL DESIGN STAGE PATH ALIGNMENT CHANGES	0	DK	DESIGN CHECK <i>T. MEADOWS</i>
					PROJECT MANAGER <i>K. DECANHA</i>
					PROJECT DIRECTOR <i>D. KEEP</i>

**REVISION IN PROGRESS**



DESIGNER

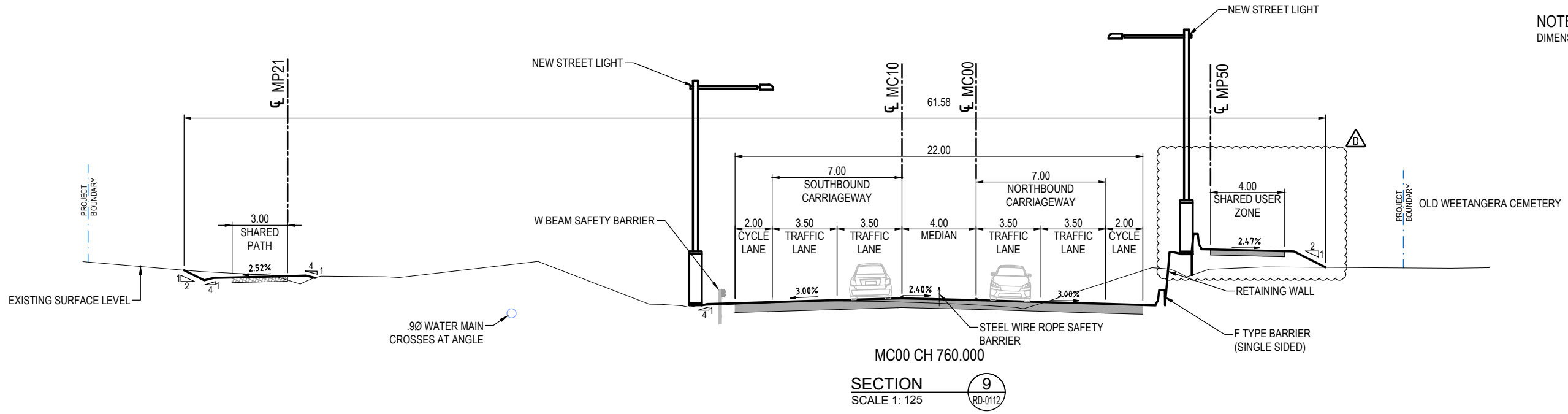
Member of the Surbana Jurong Group  
ABN 47 065 475 149  
LEVEL 9, 12 MOORE STREET  
CANBERRA ACT 2601 AUSTRALIA  
SMEC PROJECT No 3002750

DR

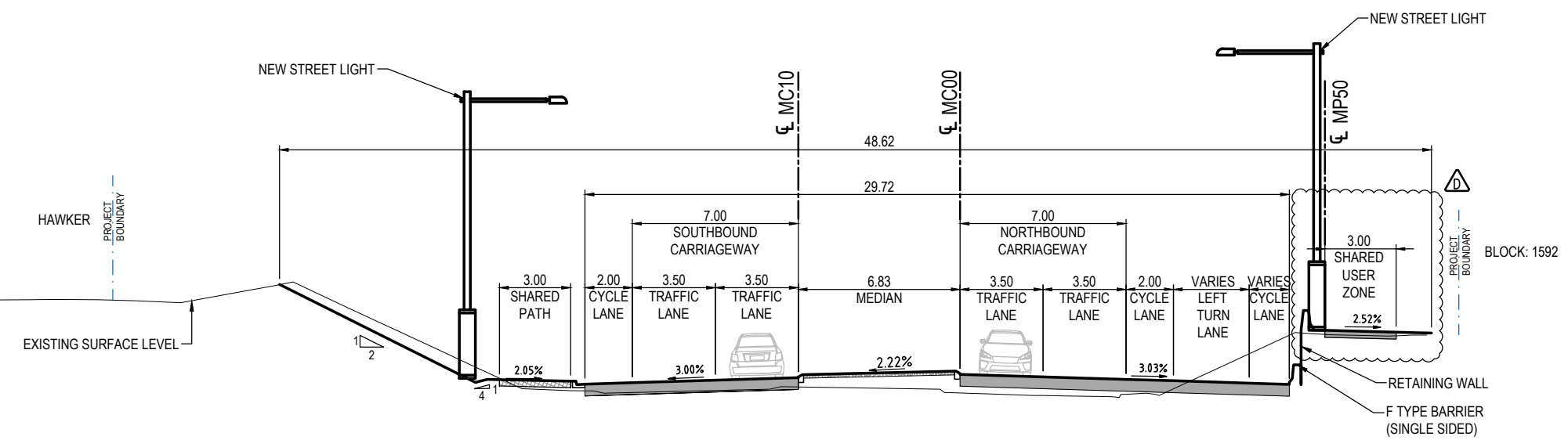
<b>CHECK PRINT</b>		PRELIM <input type="checkbox"/>	FINAL <input type="checkbox"/>
DISCIPLINE		INITIAL	DATE
DISCIPLINE			
DISCIPLINE			
DISCIPLINE			
BACKDRAFTED/CORRECTED			
CONFIRMED			

PROJECT TITLE WILLIAM HOVELL DRIVE DUPLICATION		REVISION C.1	
TYPICAL SECTIONS SHEET 1		SCALE AS SHOWN	PHASE PSP
PROJECT / DRAWING No. 3002750-GE-0031			

NOTE:  
DIMENSIONS ARE IN METRES



SECTION 9  
SCALE 1: 125  
RD-0112



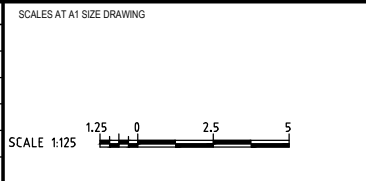
SECTION 8  
SCALE 1: 125  
RD-0111

**UNCONTROLLED COPY**  
**Check Print**  
**NOT FOR CONSTRUCTION**

150 mm ON ORIGINAL  
150  
140  
130  
120  
110  
100  
90  
80  
70  
60  
50  
40  
30  
20  
10  
0

DRAWING FILE LOCATION / NAME V:\_Vault\Projects\3002750\CAD\DWG\01_GE_General\3002750-GE-0032.dwg		PLOT DATE 27 May 2022		TIME 09:21:01	
REV	DATE	AMENDMENT / REVISION DESCRIPTION	WVR No.	APPROVAL	TITLE
A	19.06.2020	PRELIMINARY SKETCH PLAN	0007	DK	DRAFTER <i>L. HESLOP</i>
B	08.10.2020	PRELIMINARY SKETCH PLAN	0014	DK	DRAFTING CHECK <i>R. GOOSEN</i>
C	13.11.2020	PRELIMINARY SKETCH PLAN SUBMISSION	0015	DK	DESIGNER <i>B. LEJANO</i>
D	27.05.2022	DETAIL FOR DESIGN SHARED PATH ALIGNMENT CHANGES	0	DK	DESIGN CHECK <i>T. MEADOWS</i>
					PROJECT MANAGER <i>K. DECANHA</i>
					PROJECT DIRECTOR <i>D. KEEP</i>

**REVISION IN PROGRESS**



DESIGNER

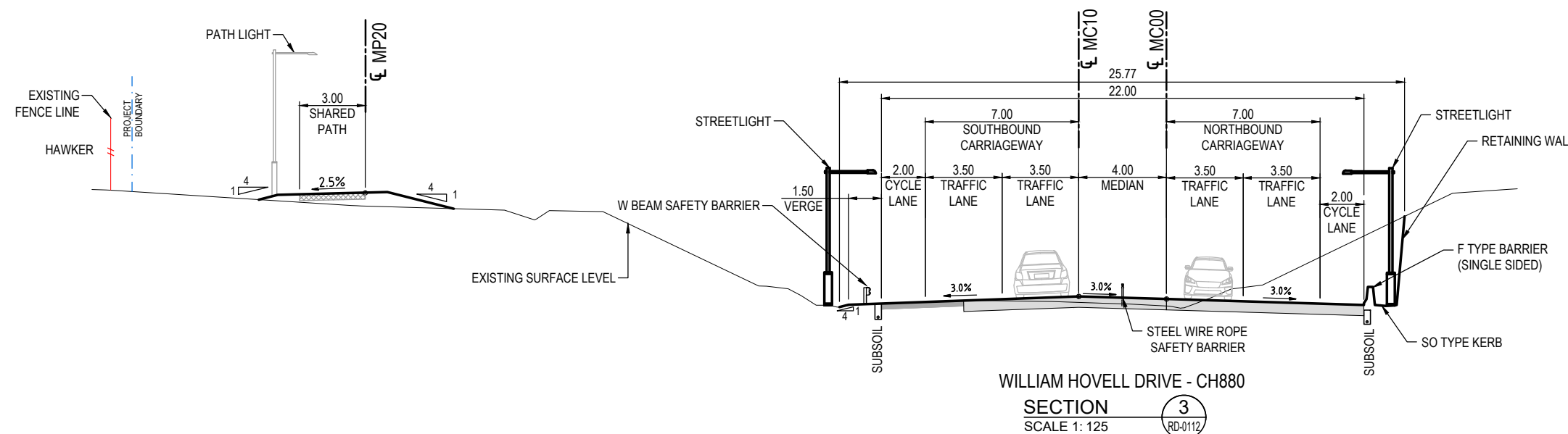
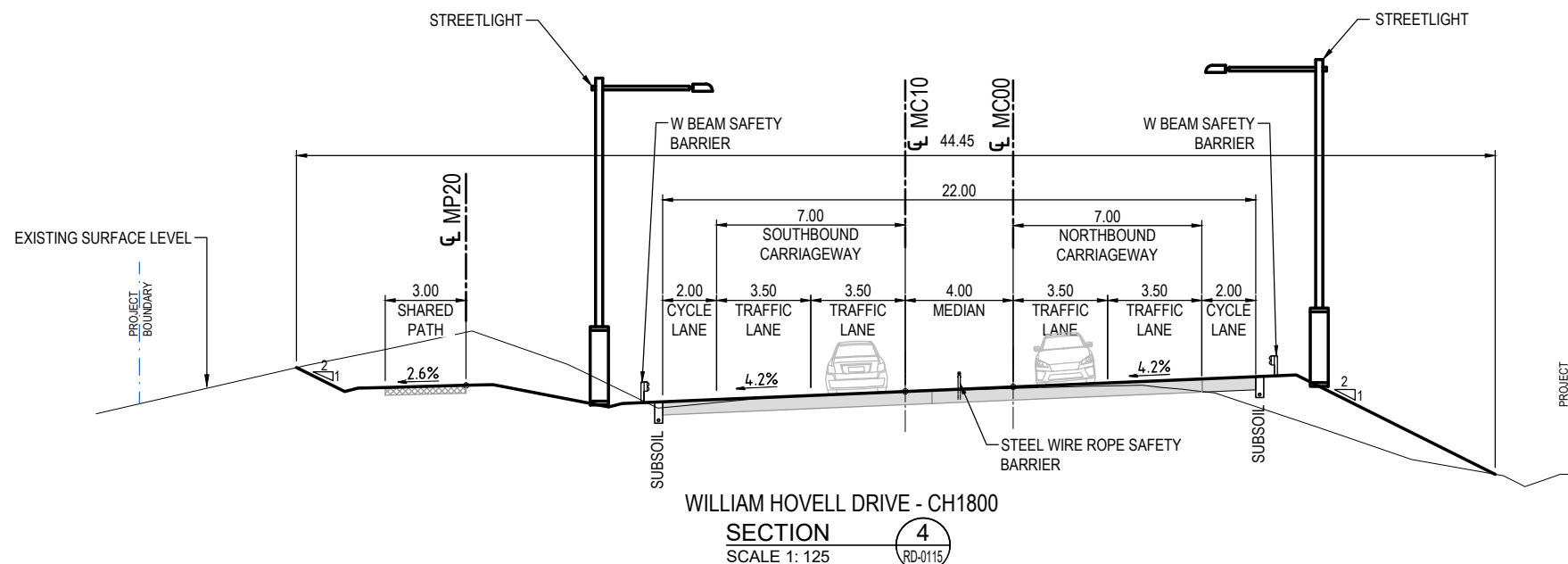
Member of the Surbana Jurong Group  
ABN 47 065 475 149  
LEVEL 9, 12 MOORE STREET  
CANBERRA ACT 2601 AUSTRALIA  
SMEC PROJECT No 3002750

DR

<b>CHECK PRINT</b>		PRELIM <input type="checkbox"/>	FINAL <input type="checkbox"/>
DISCIPLINE		INITIAL	DATE
DISCIPLINE			
DISCIPLINE			
DISCIPLINE			
BACKDRAFTED/CORRECTED			
CONFIRMED			

PROJECT TITLE WILLIAM HOVELL DRIVE DUPLICATION		REVISION C.1	
TYPICAL SECTIONS SHEET 2		SCALE AS SHOWN	PHASE PSP
PROJECT / DRAWING No 3002750-GE-0032		REVISION C.1	

NOTE:  
DIMENSIONS ARE IN METRES

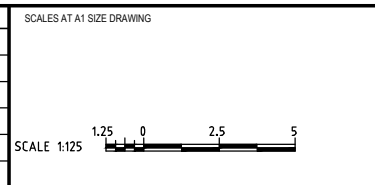


**UNCONTROLLED COPY**  
**Check Print**  
**NOT FOR CONSTRUCTION**

150 mm ON ORIGINAL  
A1

DRAWING FILE LOCATION / NAME V:\Vault\Projects\3002750\CAD\DWG\01_GE_General\3002750-GE-0033.dwg		PLOT DATE 27 May 2022		TIME 09:21:23	
REV	DATE	AMENDMENT / REVISION DESCRIPTION	WVR No.	APPROVAL	TITLE
A	19.06.2020	PRELIMINARY SKETCH PLAN	0007	DK	DRAFTER <i>L. HESLOP</i>
B	08.10.2020	PRELIMINARY SKETCH PLAN	0014	DK	DRAFTING CHECK <i>R. GOOSEN</i>
C	13.11.2020	PRELIMINARY SKETCH PLAN SUBMISSION	0015	DK	DESIGNER <i>B. LEJANO</i>
D	27.05.2022	DETAIL DESIGN SKETCH PLAN ALIGNMENT CHANGES	0	DK	DESIGN CHECK <i>T. MEADOWS</i>
					PROJECT MANAGER <i>K. DECANHA</i>
					PROJECT DIRECTOR <i>D. KEEP</i>

**REVISION IN PROGRESS**



DESIGNER

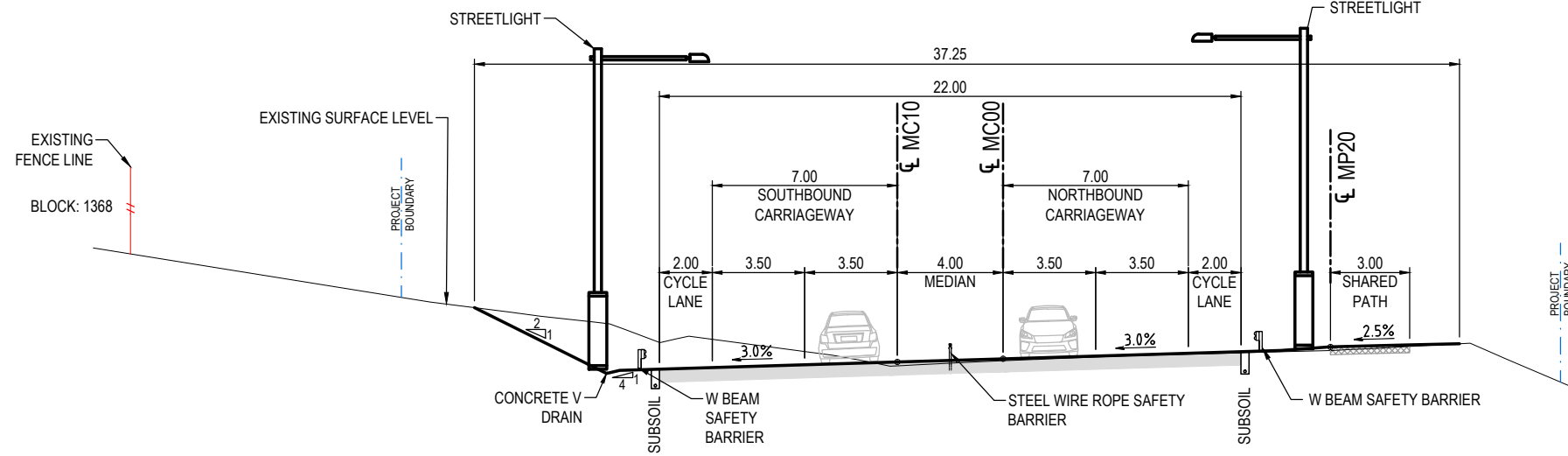
Member of the Surbana Jurong Group  
ABN 47 065 475 149  
LEVEL 9, 12 MOORE STREET  
CANBERRA ACT 2601 AUSTRALIA  
SMEC PROJECT No 3002750

DR

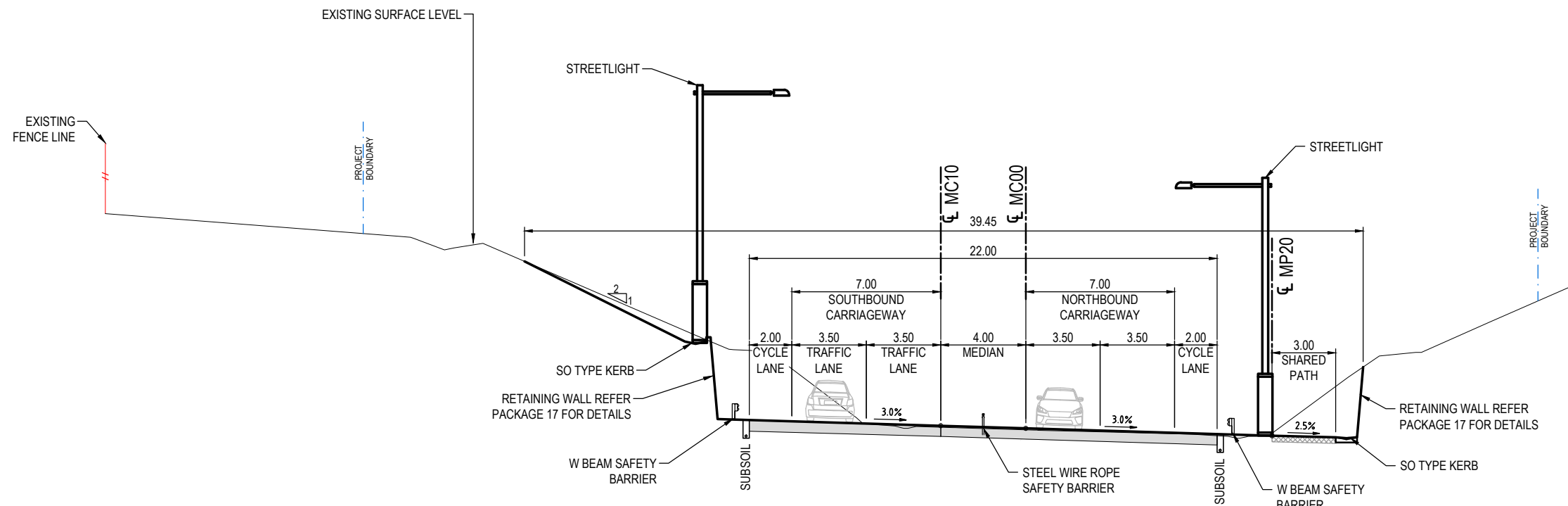
<b>CHECK PRINT</b>		PRELIM <input type="checkbox"/>	FINAL <input type="checkbox"/>
DISCIPLINE		INITIAL	DATE
DISCIPLINE			
DISCIPLINE			
DISCIPLINE			
BACKDRAFTED/CORRECTED			
CONFIRMED			

PROJECT TITLE WILLIAM HOVELL DRIVE DUPLICATION		REVISION C.1	
TYPICAL SECTIONS SHEET 3		SCALE AS SHOWN	PHASE PSP
PROJECT / DRAWING No. 3002750-GE-0033		REVISION C.1	

NOTE:  
DIMENSIONS ARE IN METRES



WILLIAM HOVELL DRIVE - CH3500  
SECTION 6  
SCALE 1: 125



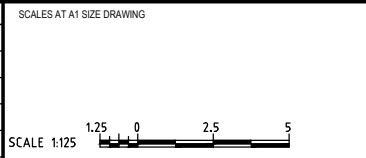
WILLIAM HOVELL DRIVE - CH2800  
SECTION 5  
SCALE 1: 125

**UNCONTROLLED COPY**  
**Check Print**  
**NOT FOR CONSTRUCTION**

150 mm ON ORIGINAL  
A1

DRAWING FILE LOCATION / NAME V:\_Vault\Projects\3002750\CAD\DWG\01_GE_General\3002750-GE-0034.dwg		PLOT DATE 27 May 2022		TIME 09:21:45	
REV	DATE	AMENDMENT / REVISION DESCRIPTION	WVR No.	APPROVAL	TITLE
A	19.06.2020	PRELIMINARY SKETCH PLAN	0007	DK	DRAFTER <i>L. HESLOP</i>
B	08.10.2020	PRELIMINARY SKETCH PLAN	0014	DK	DRAFTING CHECK <i>R. GOOSEN</i>
C	13.11.2020	PRELIMINARY SKETCH PLAN SUBMISSION	0015	DK	DESIGNER <i>B. LEJANO</i>
D	27.05.2022	DETAIL DESIGN - SHARED PATH ALIGNMENT CHANGES	0	DK	DESIGN CHECK <i>T. MEADOWS</i>
					PROJECT MANAGER <i>K. DECANHA</i>
					PROJECT DIRECTOR <i>D. KEEP</i>

**REVISION IN PROGRESS**



DESIGNER

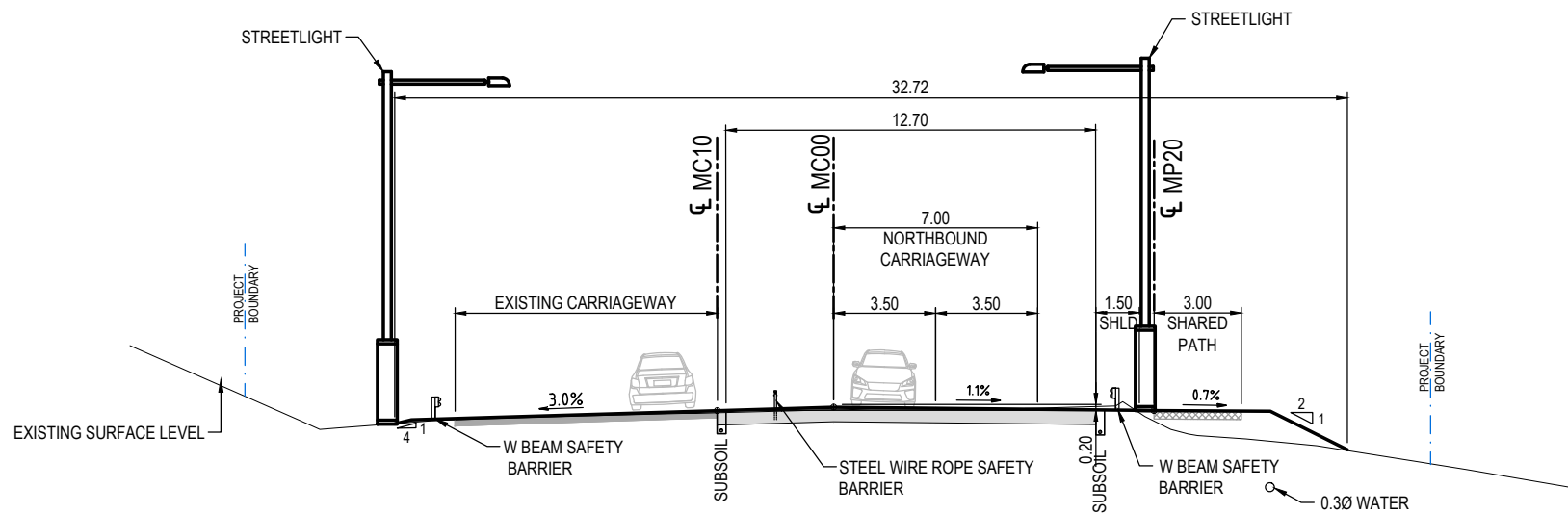
Member of the Surlana Jurong Group  
ABN 47 065 475 149  
LEVEL 9, 12 MOORE STREET  
CANBERRA ACT 2601 AUSTRALIA  
SMEC PROJECT No 3002750

DR

**CHECK PRINT**

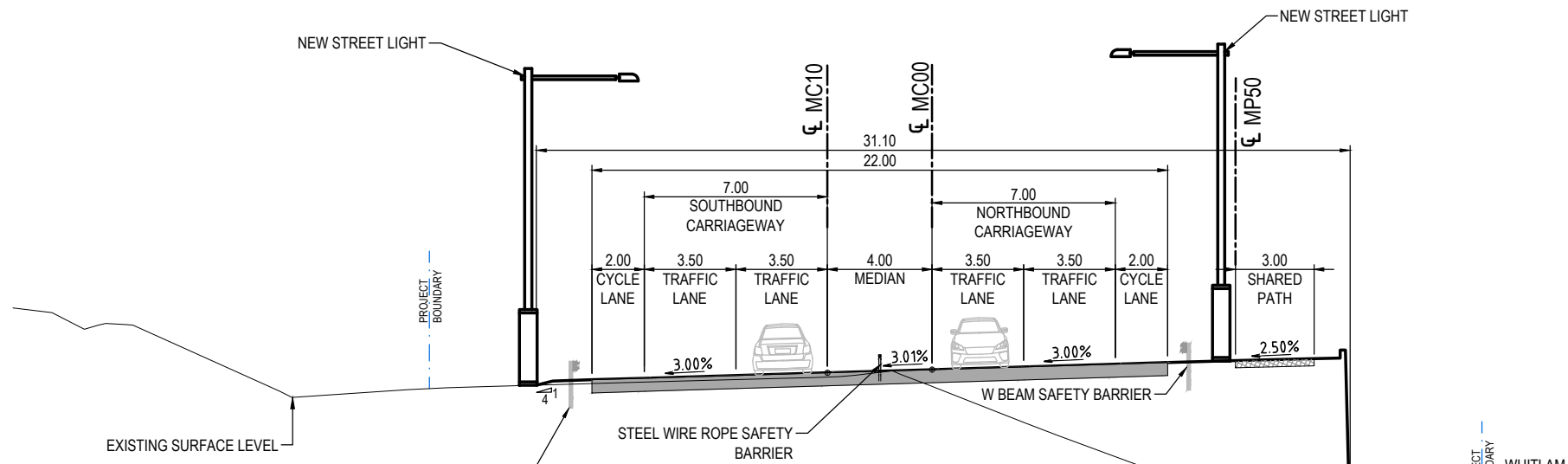
DISCIPLINE	PRELIM <input type="checkbox"/>	FINAL <input type="checkbox"/>
DISCIPLINE	INITIAL	DATE
DISCIPLINE		
DISCIPLINE		
DISCIPLINE		
BACKDRAFTED/CORRECTED		
CONFIRMED		

PROJECT TITLE WILLIAM HOVELL DRIVE DUPLICATION		REVISION 0	
TYPICAL SECTIONS SHEET 4		PROJECT / DRAWING No 3002750-GE-0034	
SCALE AS SHOWN	PHASE PSP	REVISION 0	



WILLIAM HOVELL DRIVE - CH4160

SECTION 7  
SCALE 1:125



MC00 CH 3960.000

SECTION 10  
SCALE 1:125

**UNCONTROLLED COPY**  
**Check Print**  
**NOT FOR CONSTRUCTION**

150 mm ON ORIGINAL  
150  
140  
130  
120  
110  
100  
90  
80  
70  
60  
50  
40  
30  
20  
10  
0

DRAWING FILE LOCATION / NAME V:\_Vault\Projects\3002750\CAD\DWG\01_GE_General\3002750-GE-0035.dwg		PLOT DATE 27 May 2022		TIME 09:22:07	
REV	DATE	AMENDMENT / REVISION DESCRIPTION	WVR No.	APPROVAL	TITLE
A	19.06.2020	PRELIMINARY SKETCH PLAN	0007	DK	DRAFTER <i>L. HESLOP</i>
B	08.10.2020	PRELIMINARY SKETCH PLAN	0014	DK	DRAFTING CHECK <i>R. GOOSEN</i>
C	13.11.2020	PRELIMINARY SKETCH PLAN SUBMISSION	0015	DK	DESIGNER <i>B. LEJANO</i>
D	27.05.2022	DETAIL DESIGN - SHARED PATH ALIGNMENT & DIMENSIONS	0	DK	DESIGN CHECK <i>T. MEADOWS</i>
					PROJECT MANAGER <i>K. DECANHA</i>
					PROJECT DIRECTOR <i>D. KEEP</i>

**REVISION IN PROGRESS**

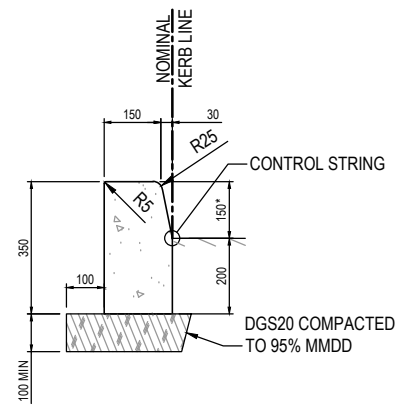
SCALES AT A1 SIZE DRAWING	
SCALE 1:125	

DESIGNER **SMEC**  
Member of the Surbana Jurong Group  
ABN 47 065 475 149  
LEVEL 9, 12 MOORE STREET  
CANBERRA ACT 2601 AUSTRALIA  
SMEC PROJECT No 3002750

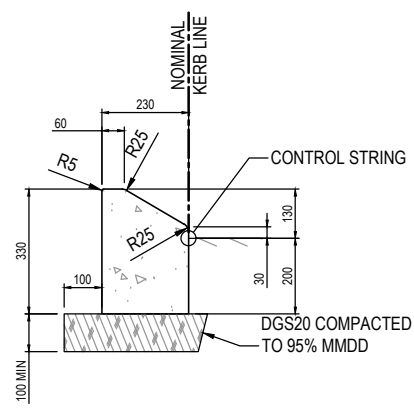
<b>CHECK PRINT</b>		PRELIM <input type="checkbox"/>	FINAL <input type="checkbox"/>
DISCIPLINE		INITIAL	DATE
DISCIPLINE			
DISCIPLINE			
DISCIPLINE			
BACKDRAFTED/CORRECTED			
CONFIRMED			

PROJECT TITLE WILLIAM HOVELL DRIVE DUPLICATION		REVISION 0	
TYPICAL SECTIONS SHEET 5		PROJECT / DRAWING No 3002750-GE-0035	
SCALE AS SHOWN	PHASE PSP	REVISION 0	

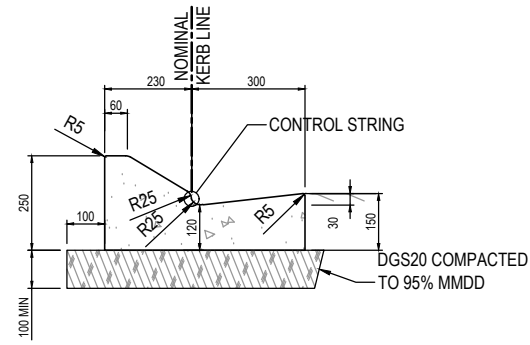
DR



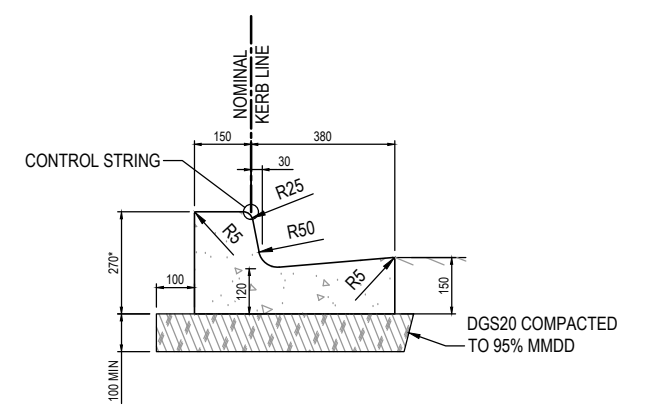
**KERB ONLY (KO)**  
SCALE 1:10  
\* 200 FOR BARRIER KERB ONLY (BKO)



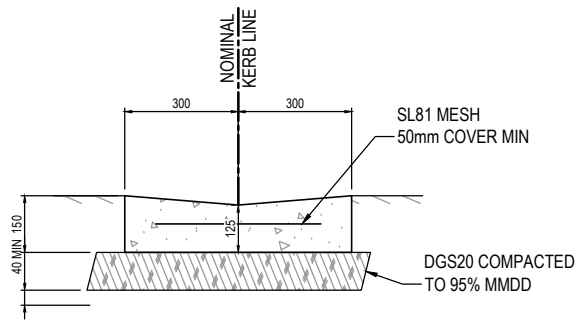
**MOUNTABLE KERB (MK)**  
SCALE 1:10



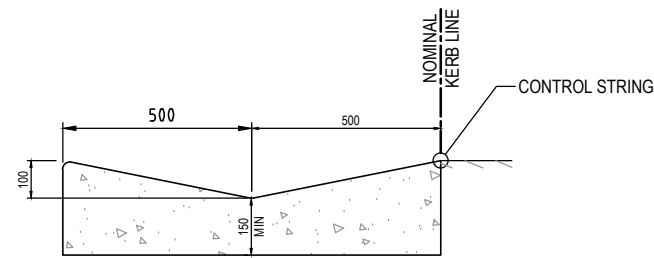
**MOUNTABLE KERB AND GUTTER (MKG)**  
SCALE 1:10



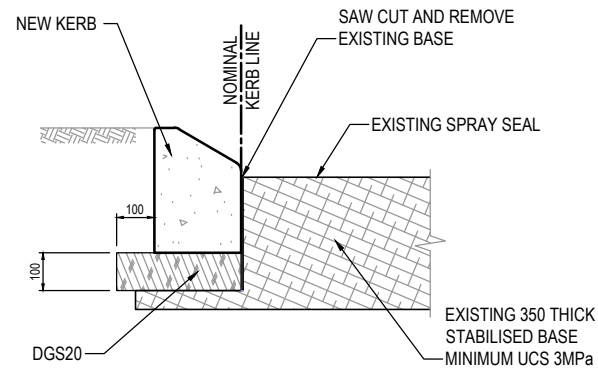
**KERB AND GUTTER (KG)**  
SCALE 1:10  
320 FOR BARRIER KERB AND GUTTER (BKG)



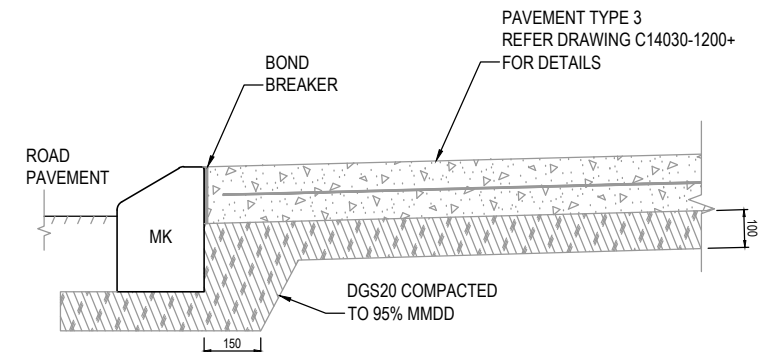
**OPEN CONCRETE INVERT (OCI)**  
SCALE 1:10



**DISHED CROSSING INCREASED WATERWAY (SO)**  
SCALE 1:10



**NEW KERB IN EXISTING PAVEMENT**  
SCALE 1:10



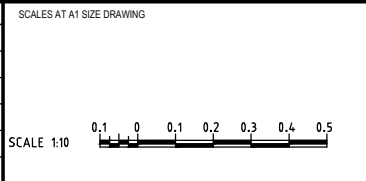
**TYPICAL CONCRETE ISLAND INFILL DETAIL**  
SCALE 1:10

**UNCONTROLLED COPY**  
**Check Print**  
**NOT FOR CONSTRUCTION**

150 mm ON ORIGINAL  
A1

DRAWING FILE LOCATION / NAME V:\Vault\Projects\3002750\CAD\DWG\01_GE_General\3002750-GE-0041.dwg		PLOT DATE 27 May 2022		TIME 09:22:28	
REV	DATE	AMENDMENT / REVISION DESCRIPTION	WVR No.	APPROVAL	TITLE
A	19.06.2020	PRELIMINARY SKETCH PLAN	0007	DK	DRAFTER <i>L. HESLOP</i>
B	08.10.2020	PRELIMINARY SKETCH PLAN	0014	DK	DRAFTING CHECK <i>R. GOOSEN</i>
C	13.11.2020	PRELIMINARY SKETCH PLAN SUBMISSION	0015	DK	DESIGNER <i>B. LEJANO</i>
D	27.05.2022	DETAIL DESIGN SPREADSHEET ALIGNMENT DRAWINGS	0	DK	DESIGN CHECK <i>T. MEADOWS</i>
					PROJECT MANAGER <i>K. DECANHA</i>
					PROJECT DIRECTOR <i>D. KEEP</i>

**REVISION IN PROGRESS**



DESIGNER

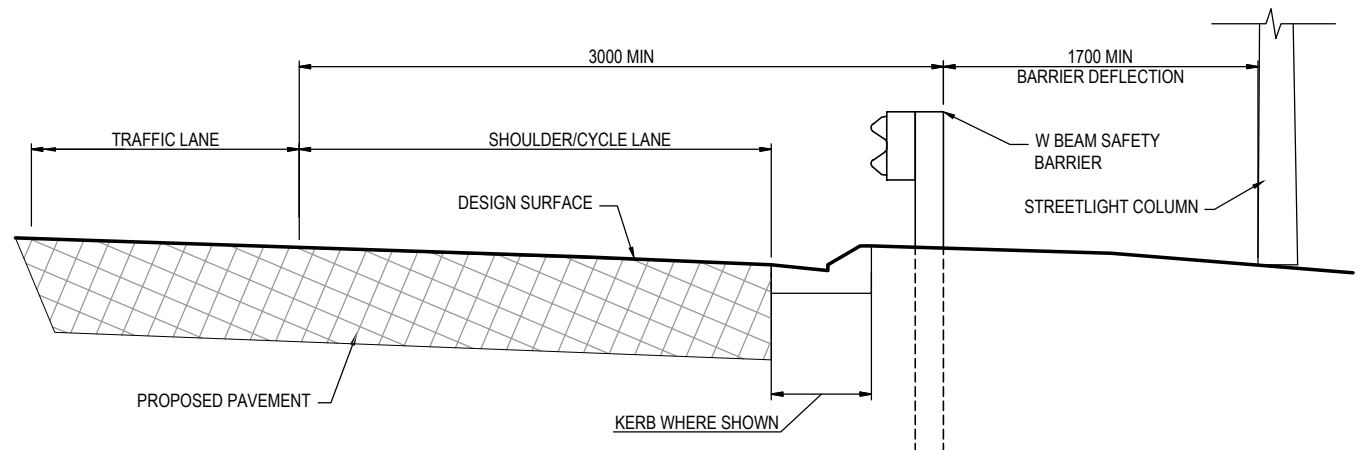
Member of the Surbana Jurong Group  
ABN 47 065 475 149

LEVEL 9, 12 MOORE STREET  
CANBERRA ACT 2601 AUSTRALIA  
SMEC PROJECT No 3002750

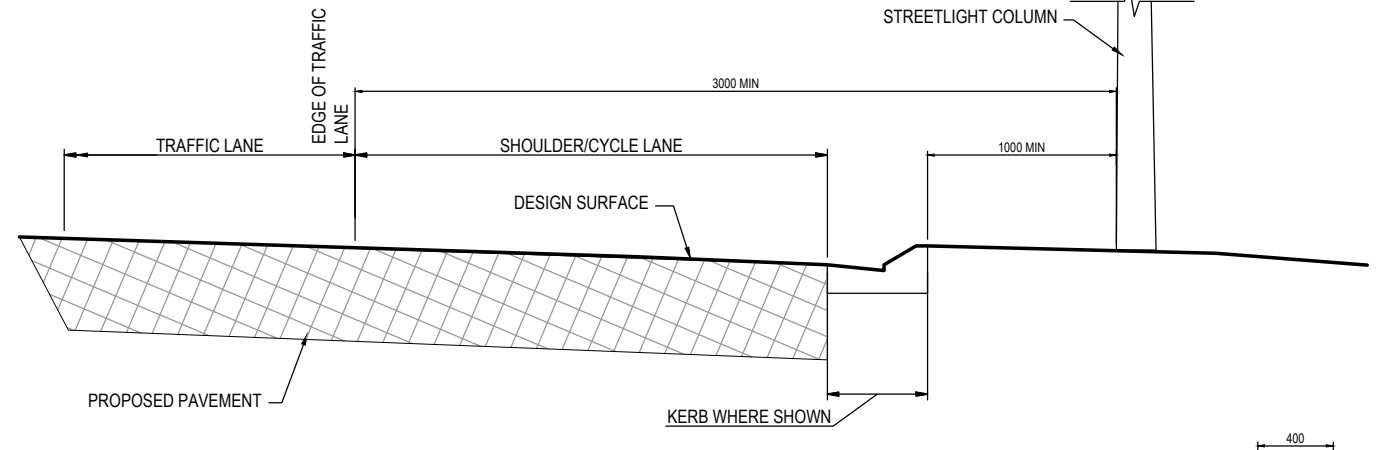
DR

<b>CHECK PRINT</b>		PRELIM <input type="checkbox"/>	FINAL <input type="checkbox"/>
DISCIPLINE		INITIAL	DATE
DISCIPLINE			
DISCIPLINE			
DISCIPLINE			
BACKDRAFTED/CORRECTED			
CONFIRMED			

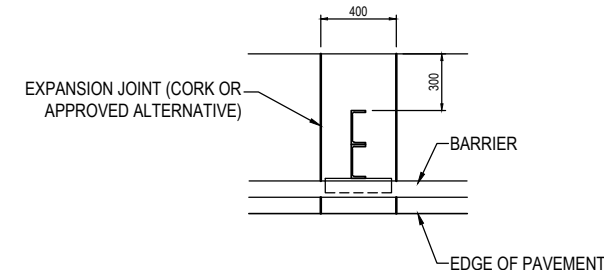
PROJECT TITLE WILLIAM HOVELL DRIVE DUPLICATION		PROJECT / DRAWING No. 3002750-GE-0041	
TYPICAL DETAILS SHEET 1		SCALE AS SHOWN	PHASE PSP
		REVISION C.1	



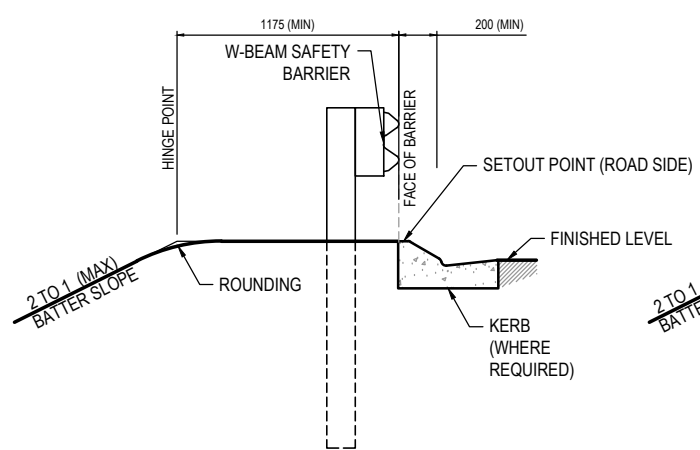
STREETLIGHT COLUMN OFFSET BEHIND SAFETY BARRIER  
SCALE 1:20



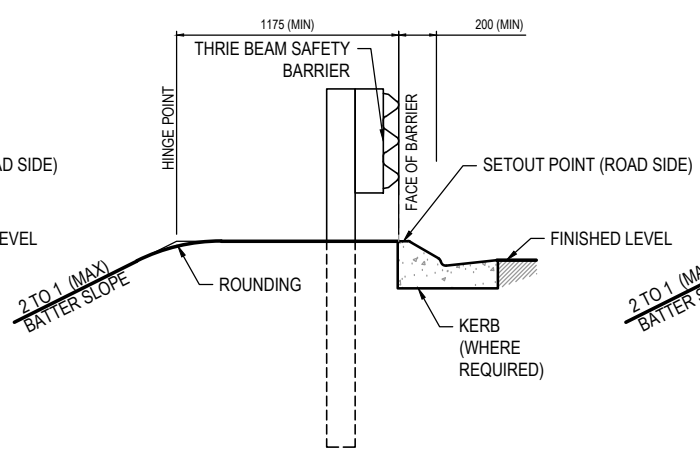
STREETLIGHT COLUMN OFFSET - NO SAFETY BARRIER  
SCALE 1:20



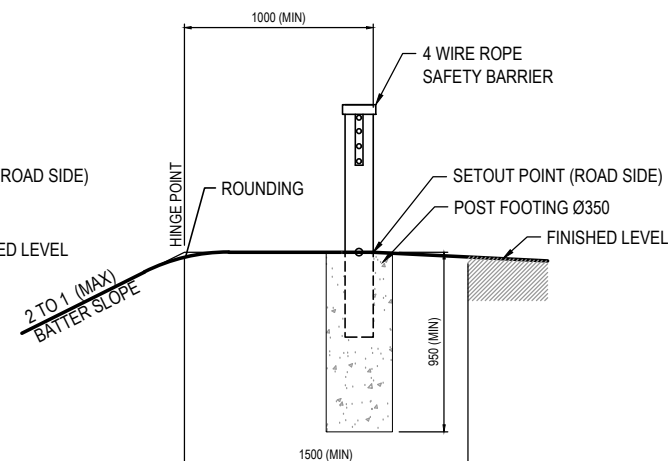
DETAIL OF TREATMENT WITH CONCRETE SURFACING AROUND BARRIER POST  
SCALE 1:20



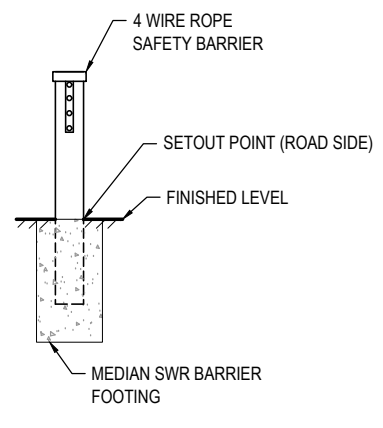
G4 W-BEAM  
SCALE 1:20



THRIE BEAM BARRIER  
SCALE 1:20



FOUR WIRE S.W.R SAFETY BARRIER (VERGE APPLICATION)  
SCALE 1:20



FOUR WIRE S.W.R BARRIER (MEDIAN APPLICATION)  
SCALE 1:20

- NOTES**
- ALL DIMENSIONS ARE IN MILLIMETRES U.N.O.
  - FOR GENERAL NOTES AND LEGEND REFER DRG No. 3002286-DRD-0002
  - SWR DENOTES STEEL WIRE ROPE.
  - FOR INSTALLATION OF APPROVED SWR REFER TO MANUFACTURER'S SPECIFICATIONS AND GUIDELINES.
  - REFER STANDARD DWG. MD.R132.B12.A.1 FOR TYPE 'F' CONCRETE BARRIER GALVANISED COVER FOR LIGHTING COLUMNS
  - FOR DETAILS OF SURFACING TREATMENTS AROUND BARRIER FOOTINGS REFER DRG SERIES DPV-0700
- SUBSOIL DRAINS**
- SUBSOIL DRAINS TO BE PROVIDED AT ALL NEW PERMANENT KERBS AND GUTTER AND PAVEMENT EDGES
  - OUTLET CONNECTIONS TO BE MADE AT GULLIES
  - SUBSOILS TO BE CONSTRUCTED ON SUBBASE PAVEMENT PRIOR TO CONSTRUCTION OF KERBS
- KERBS**
- EXPANSION JOINTS TO BE PLACED AT CURB STRUCTURES AND AT 15m MAX SPACING FOR FULL DEPTH OF KERB SECTION
  - DUMMY JOINTS TO BE CUT TO FULL DEPTH OF KERB SECTION

150 mm ON ORIGINAL

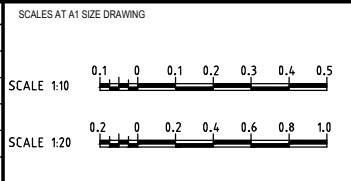
DRAWING FILE LOCATION / NAME  
V:\\_Vault\Projects\3002750\CAD\DWG\01\_GE\_General\3002750-GE-0042.dwg

PLOT DATE  
27 May 2022

TIME  
09:22:50

REV	DATE	AMENDMENT / REVISION DESCRIPTION	WVR No.	APPROVAL	TITLE	NAME
A	19.06.2020	PRELIMINARY SKETCH PLAN	0007	DK	DRAFTER	L. HESLOP
B	08.10.2020	PRELIMINARY SKETCH PLAN	0014	DK	DRAFTING CHECK	R. GOOSEN
C	13.11.2020	PRELIMINARY SKETCH PLAN SUBMISSION	0015	DK	DESIGNER	B. LEJANO
D	27.05.2022	DETAILS OF DESIGN SKETCH PATH ALIGNMENT CHANGES	0	DK	DESIGN CHECK	T. MEADOWS
					PROJECT MANAGER	K. DECANHA
					PROJECT DIRECTOR	D. KEEP

REVISION IN PROGRESS



DESIGNER

Member of the Surbana Jurong Group  
ABN 47 065 475 149

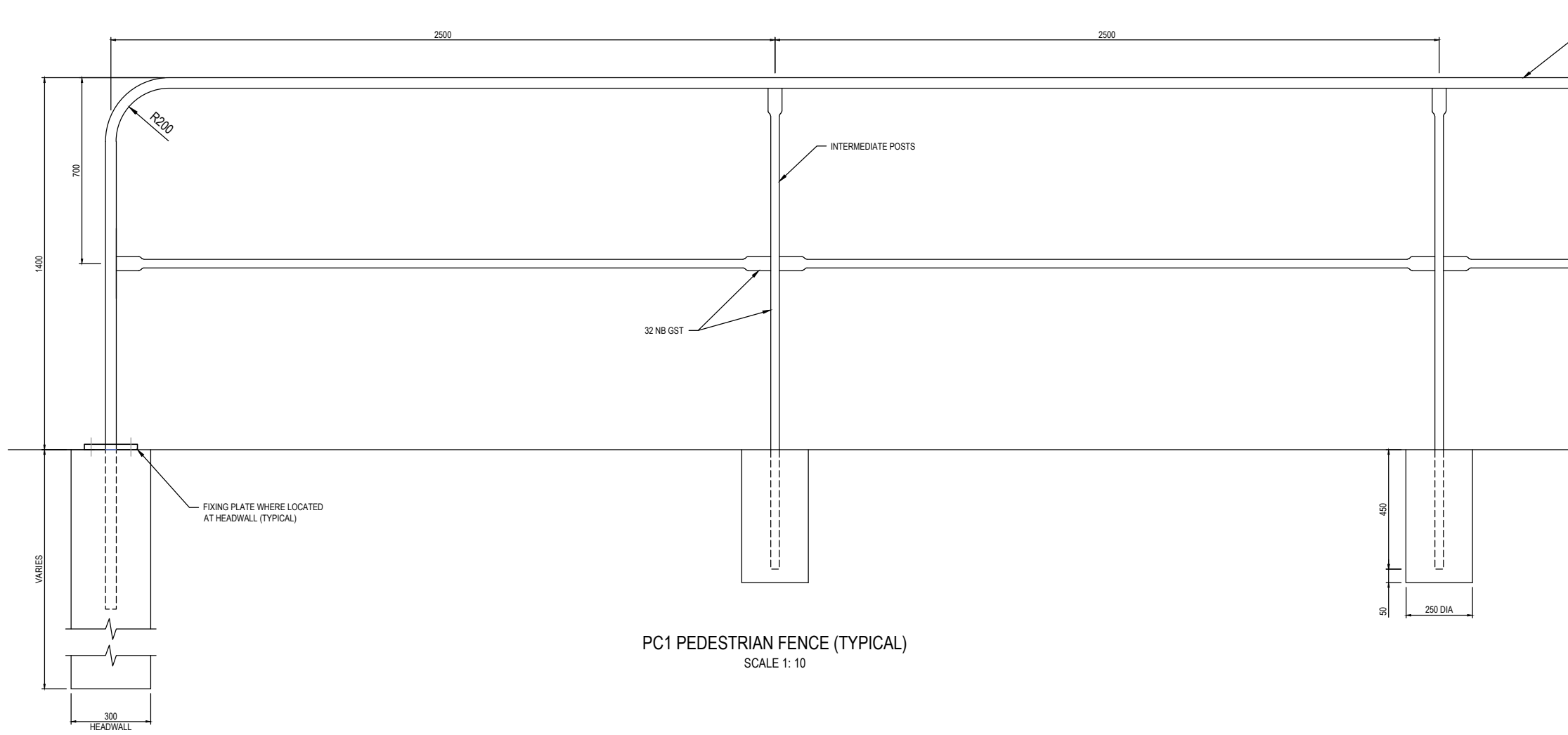
LEVEL 9, 12 MOORE STREET  
CANBERRA ACT 2601 AUSTRALIA  
SMEC PROJECT No 3002750

DISCIPLINE	PRELIM	FINAL
DISCIPLINE	INITIAL	DATE
DISCIPLINE		
DISCIPLINE		
DISCIPLINE		
BACKDRAFTED/CORRECTED		
CONFIRMED		

PROJECT TITLE WILLIAM HOVELL DRIVE DUPLICATION		REVISION C.1
TYPICAL DETAILS SHEET 2		
SCALE AS SHOWN	PHASE PSP	PROJECT / DRAWING No. 3002750-GE-0042

DR

UNCONTROLLED COPY  
Check Print  
NOT FOR CONSTRUCTION



- PC1 PEDESTRIAN FENCE NOTES**
1. ALL POSTS AND RAILS TO BE MEDIUM DUTY GALVANISED STEEL TUBE (GST) OF THE NOMINAL DIAMETERS SHOWN
  2. FITTINGS TO BE GALVANISED UNLESS OTHERWISE SPECIFIED
  3. ALL POSTS TO BE SET VERTICAL
  4. CONCRETE FOR FOOTINGS TO BE 32MPa
  5. ALL WELDS AND OTHER AREAS OF DAMAGED SURFACE TO BE WIDE BRUSHED TO BARE METAL AND PAINTED WITH 2 COATS OF ZINC RICH PAINT

PC1 PEDESTRIAN FENCE (TYPICAL)  
SCALE 1: 10

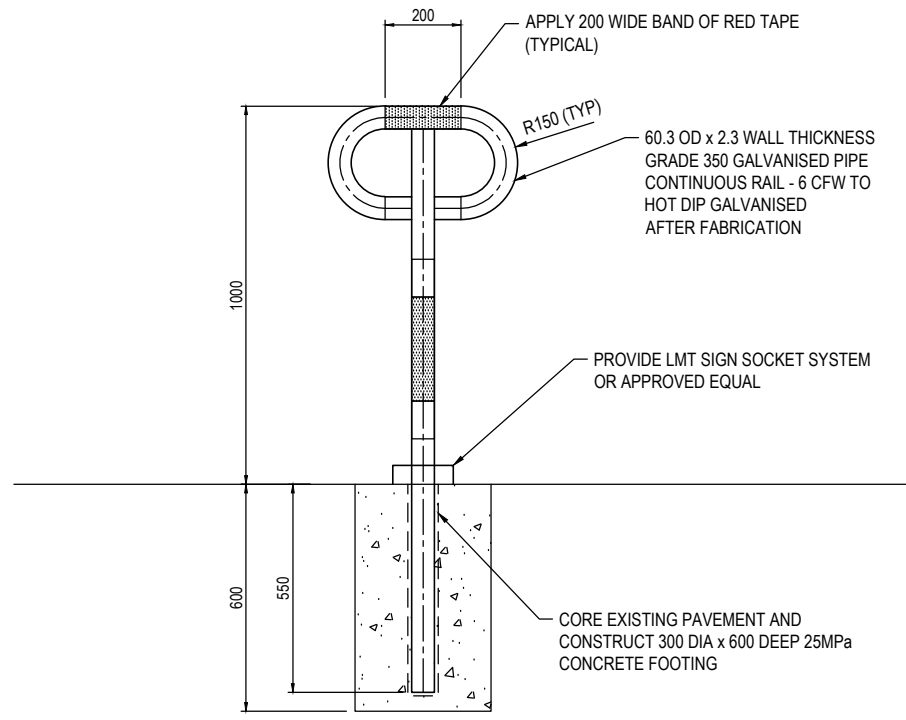
**UNCONTROLLED COPY**  
**Check Print**  
**NOT FOR CONSTRUCTION**

150 mm ON ORIGINAL  
A1

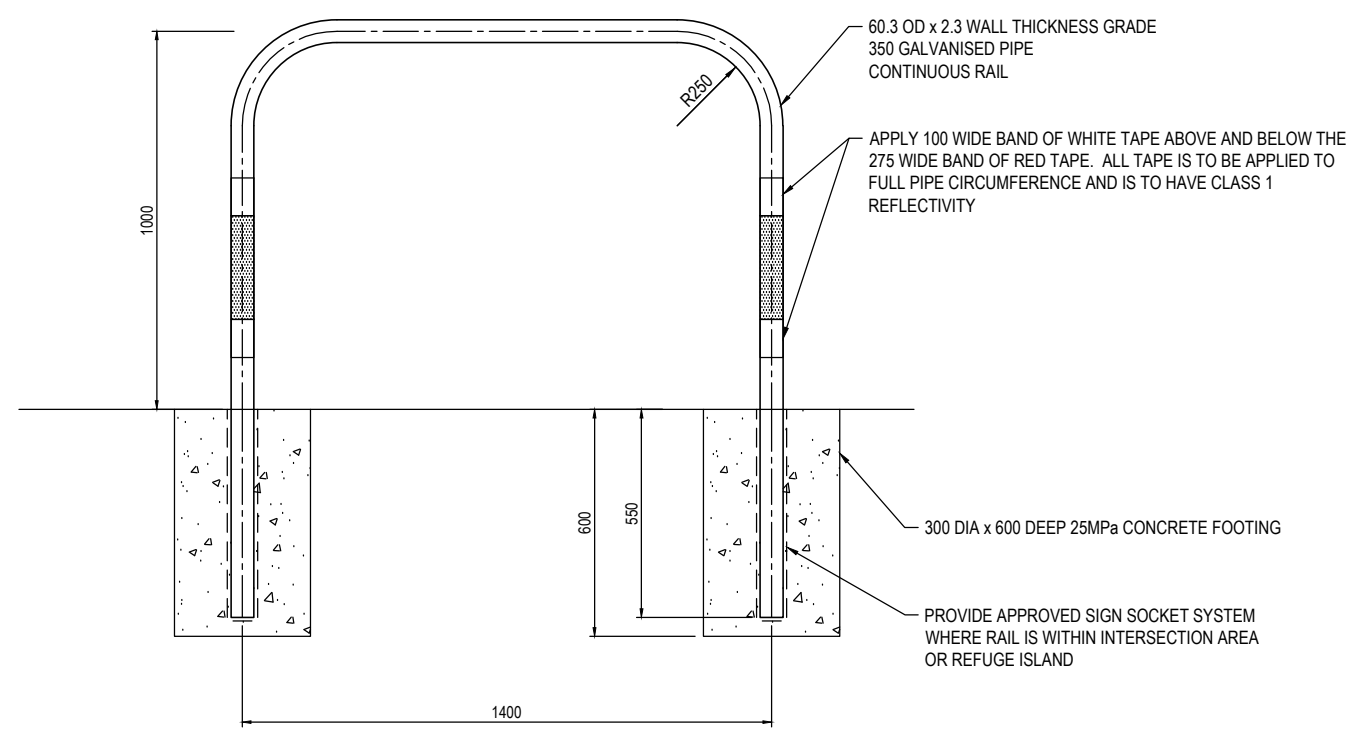
DRAWING FILE LOCATION / NAME V:\_Vault\Projects\3002750\CAD\DWG\01_GE_General\3002750-GE-0043.dwg		PLOT DATE 27 May 2022		TIME 09:23:12												
EXTERNAL REFERENCE FILES		REV	DATE	AMENDMENT / REVISION DESCRIPTION	WVR No.	APPROVAL	TITLE	NAME	SCALES AT A1 SIZE DRAWING	DESIGNER	CHECK PRINT		PROJECT TITLE	WILLIAM HOVELL DRIVE DUPLICATION		
		A	19.06.2020	PRELIMINARY SKETCH PLAN	0007	DK	DRAFTER	L. HESLOP	SCALE 1:10 	 <b>SMEC</b> Member of the Surbana Jurong Group ABN 47 065 475 149 LEVEL 9, 12 MOORE STREET CANBERRA ACT 2601 AUSTRALIA SMEC PROJECT No 3002750	<input type="checkbox"/> PRELIM <input type="checkbox"/> FINAL INITIAL DATE		TYPICAL DETAILS SHEET 3			
		B	08.10.2020	PRELIMINARY SKETCH PLAN	0014	DK	DRAFTING CHECK	R. GOOSEN			DISCIPLINE		SCALE	PHASE	PROJECT / DRAWING No.	REVISION
		C	13.11.2020	PRELIMINARY SKETCH PLAN	0015	DK	DESIGNER	B. LEJANO			DISCIPLINE		AS SHOWN	PSP	3002750-GE-0043	C.1
		D	27.05.2022	DETAIL DESIGN SPAN AND PATH ALIGNMENT DRAWINGS	0	DK	DESIGN CHECK	T. MEADOWS			DISCIPLINE					
							PROJECT MANAGER	K. DECANHA			DISCIPLINE					
							PROJECT DIRECTOR	D. KEEP	DISCIPLINE							

**REVISION IN PROGRESS**

DR



CYCLE REST RAIL (TYPE A) DETAIL  
SCALE 1:100



1.4m CYCLE REST RAIL DETAIL  
SCALE 1:100

**UNCONTROLLED COPY**  
**Check Print**  
**NOT FOR CONSTRUCTION**

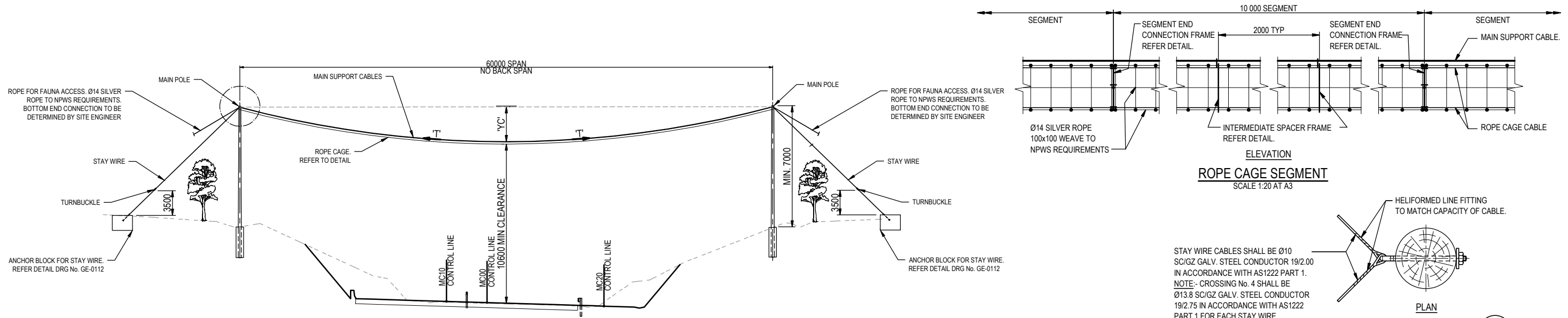
150 mm ON ORIGINAL  
A1

DRAWING FILE LOCATION / NAME V:\_Vault\Projects\3002750\CAD\DWG\01_GE_General\3002750-GE-0044.dwg		PLOT DATE 27 May 2022		TIME 09:23:35		SCALES AT A1 SIZE DRAWING SCALE 1:100		DESIGNER <b>SMEC</b> Member of the Surbana Jurong Group ABN 47 065 475 149 LEVEL 9, 12 MOORE STREET CANBERRA ACT 2601 AUSTRALIA SMEC PROJECT No 3002750		<input checked="" type="checkbox"/> CHECK PRINT <input type="checkbox"/> PRELIM <input type="checkbox"/> FINAL INITIAL DATE		PROJECT TITLE WILLIAM HOVELL DRIVE DUPLICATION		REVISION C.1	
EXTERNAL REFERENCE FILES		REV	DATE	AMENDMENT / REVISION DESCRIPTION	WVR No.	APPROVAL	TITLE	NAME	DISCIPLINE DISCIPLINE DISCIPLINE DISCIPLINE BACKDRAFTED/CORRECTED CONFIRMED		TYPICAL DETAILS SHEET 4		SCALE AS SHOWN	PHASE PSP	PROJECT / DRAWING No. 3002750-GE-0044
		A	19.06.2020	PRELIMINARY SKETCH PLAN	0007	DK	DRAFTER	L. HESLOP							
		B	08.10.2020	PRELIMINARY SKETCH PLAN	0014	DK	DRAFTING CHECK	R. GOOSEN							
		C	13.11.2020	PRELIMINARY SKETCH PLAN SUBMISSION	0015	DK	DESIGNER	B. LEJANO							
		D	27.05.2022	DETAIL DESIGN SKETCH PATH ALIGNMENT CHANGES	0	DK	DESIGN CHECK	T. MEADOWS							
							PROJECT MANAGER	K. DECANHA							
							PROJECT DIRECTOR	D. KEEP							

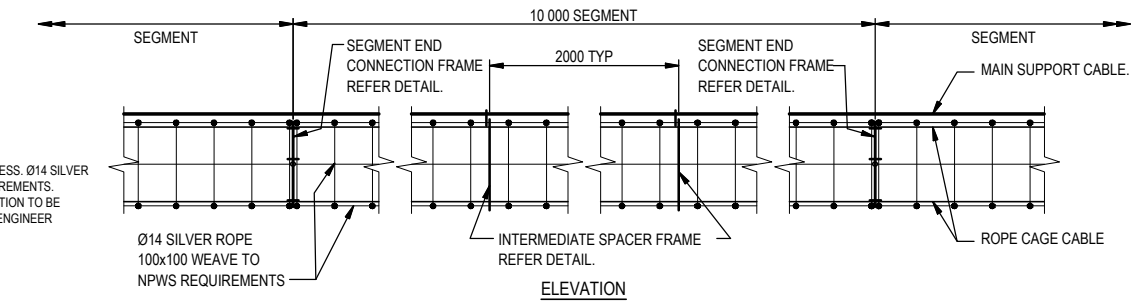
**REVISION IN PROGRESS**

DR

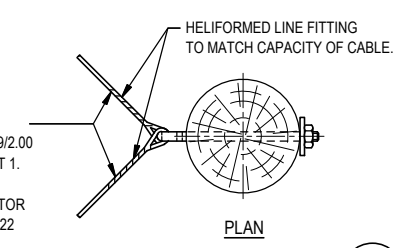




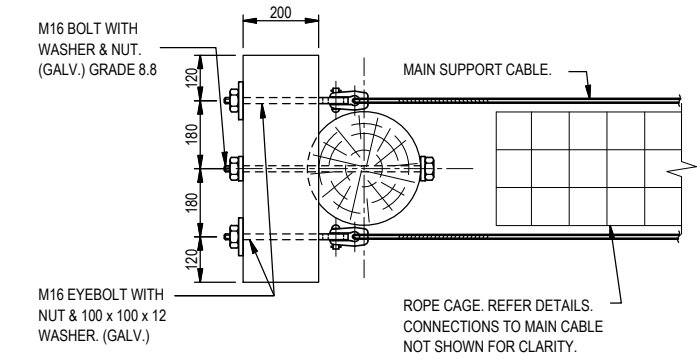
TYPICAL ELEVATION - CANOPY CROSSING  
CH 2820.000



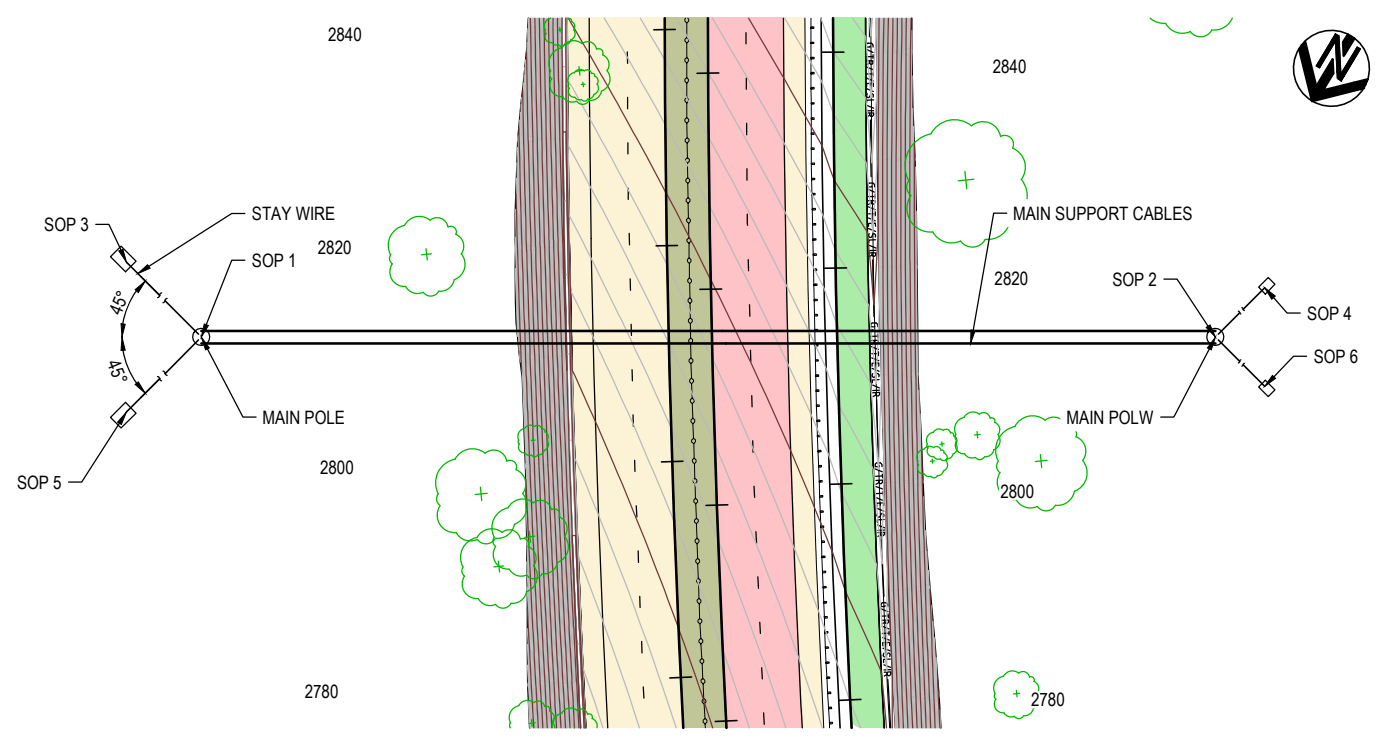
ELEVATION  
ROPE CAGE SEGMENT  
SCALE 1:20 AT A3



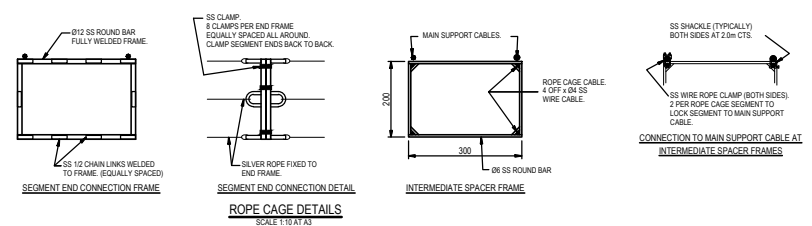
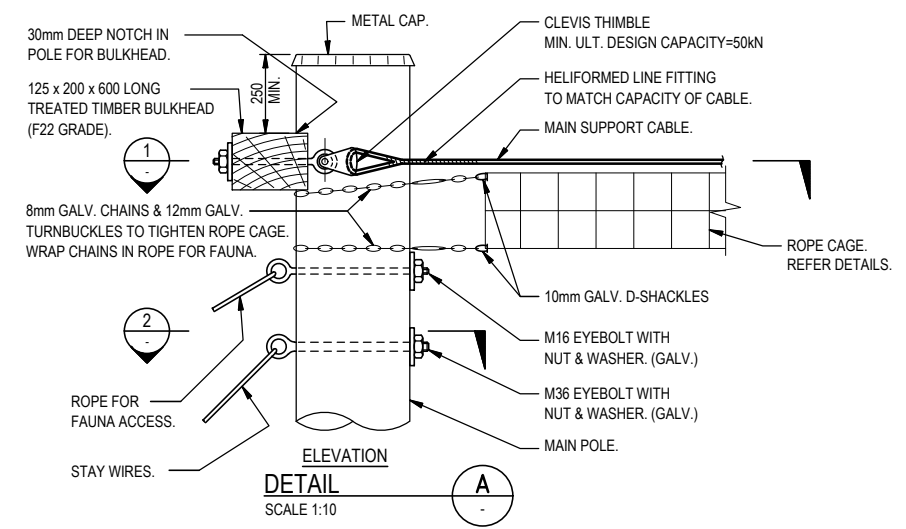
STAY WIRE CABLES SHALL BE Ø10 SC/GZ GALV. STEEL CONDUCTOR 19/2.00 IN ACCORDANCE WITH AS1222 PART 1.  
NOTE: CROSSING No. 4 SHALL BE Ø13.8 SC/GZ GALV. STEEL CONDUCTOR 19/2.75 IN ACCORDANCE WITH AS1222 PART 1 FOR EACH STAY WIRE.



SECTION PLAN 1  
SCALE 1:10



PLAN  
1:350



ROPE CAGE DETAILS  
SCALE 1:10 AT A3

- GENERAL NOTES**
- DIMENSIONS ARE IN MILLIMETRES.
  - DESIGN LIFE OF STRUCTURE AND ASSOCIATED COMPONENTS IS 40 YEARS FOR SERVICE LIFE ZONE 1 AS/NZS 4676
  - DESIGN LOADS:  
DEAD LOAD=8 kg/m FOR MAIN SUPPORT CABLES AND LADDER  
LIVE LOAD = 0.6 kN POINT LOAD  
WIND LOADING:  
WIND REGION 3A  
ULTIMATE WIND SPEED: V1000= 46 m/s  
SERVICEABILITY WIND SPEED: V20 = 37 m/s  
WIND DIRECTION MULTIPLIER: Md=1.0  
TERRAIN CATEGORY: 2  
TERRAIN HEIGHT MULTIPLIER: MZCAT= 1.05  
SHIELDING MULTIPLIER: Ms= 1  
TOPOGRAPHIC MULTIPLIER: Mt=1  
DRAG COEFFICIENT Cd IN ACCORDANCE WITH AS1170.2
  - TIMBER POLES TO BE PLACED INSIDE THE CURRENT LINE OF TREES.
  - TIMBER POLES SHALL BE ERRECTED VERTICAL AND CENTRALLY IN THE GROUND EXCAVATION.
  - TIMBER POLES SHALL BE IN ACCORDANCE WITH AS3818.11, STRESS GRADE F27 MIN AND STRENGTH GROUP SD2. ALL EXPOSED SURFACES TO BE TREATED FOR HAZARD CLASS H5. SUPPORT POLES MUST BE TREATED WITH COPPER CHROME ARSENIC (CCA).
  - TIMBER POLES TO BE BACKFILLED WITH CONCRETE WITH A MINIMUM 28 DAY COMPRESSIVE STRENGTH OF 20MPa.
  - STEEL ITEMS SHALL BE HOT DIPPED GALVANISED IN ACCORDANCE WITH AS 4680 UNLESS NOTED OTHERWISE.
  - ISO METRIC PRECISION HEXAGONAL BOLTS AND SCREWS SHALL PROPERTY CLASS 4.6/S TO AS 1110 UNLESS NOTED OTHERWISE.
  - BOLTING CATEGORY FOR COMMERCIAL BOLTS SHALL BE 4.6/S IN ACCORDANCE WITH AS4100 UNLESS NOTED OTHERWISE.
  - ISO METRIC HEXAGONAL NUTS SHALL BE PROPERTY CLASS 5 TO AS1112 UNLESS NOTED OTHERWISE.
  - DAMAGED GALVANISED SURFACES SHALL BE REPAIRED WITH SUITABLE TWO PACK ORGANIC ZINC-RICH PRIMER.
  - BOLTS, NUTS AND WASHERS SHALL BE HOT DIP GALVANISED IN ACCORDANCE WITH AS 1214.
  - FOUNDING MATERIAL SHALL BE VERIFIED ON SITE BY AN EXPERIENCED GEOTECHNICAL ENGINEER PRIOR TO THE PLACING OF POLES.
  - THE CONTRACTOR SHALL ENSURE THE ADOPTED METHOD OF CONSTRUCTION WILL AVOID DAMAGE TO ANY SURFACES OR DRAINAGE.
  - STAINLESS STEEL SHALL BE MADE IN AUSTRALIA TO AS/NZS 316S UNLESS NOTED OTHERWISE.
  - STAINLESS STEEL DOWELS, BOLTS, CAST IN FERRULES AND SQUARE WELDED WASHERS SHALL BE GRADE 316 STAINLESS STEEL TO AS/NZS 316S.
  - CABLE TENSION AND SAG HEIGHT (MAIN SUPPORT CABLES) AND SAG VALUE PROVIDED IN CONSTRUCTION SHALL CORRESPOND TO AMBIENT AIR AND STEEL TEMPERATURE VALUES. SAG VALUE VARY ACCORDING TO ANGLES BETWEEN WIRES AND TIMBER POLES. VALUES GIVEN IN THE CONSTRUCTION SPECIFICATIONS SHALL BE BASED ON ELEVATION AND PLAN ANGLES OF 45°.
  - RIGGING CONFIRMATION AND PLAN SHOWN IS CORAL AND DOES NOT INCLUDE ADDITIONAL LENGTH REQUIRED FOR ERECTING AND TIGHTENING.
  - EXACT LOCATIONS/OFFSETS ARE TO BE AGREED WITH THE LEAD ECOLOGIST DURING CLEARING WORKS.
  - SPAN LENGTH NOT TO BE ADJUSTED WITHOUT THE APPROVAL OF AN EXPERIENCED STRUCTURAL ENGINEER.
  - EXACT LOCATION OF AERIAL FAUNA PROCESSING AND ASSOCIATED CLEARING LIMIT SHALL BE AGREED AT THE TIME OF CONSTRUCTION WITH PRINCIPLE, AND NO CLEARING OF THIS AREA SHALL COMMENCE FROM THIS DIRECTION.

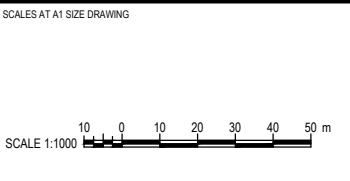
150 mm ON ORIGINAL

DRAWING FILE LOCATION / NAME V:\_Vault\Projects\3002750\CAD\DWG\01_GE_General\3002750-GE-0111.dwg		PLT DATE 27 May 2022	TIME 09:24:36
REV	DATE	AMENDMENT / REVISION DESCRIPTION	WVR No.
A	27.05.2022	DETAILED DESIGN, SHARED PATH ALIGNMENT CHANGES	0

**REVISION IN PROGRESS**

- 3002750\_SMEC.dwg
- 3002750\_TYP.DWG
- 3002750\_WIND.DES
- 3002750\_WIND.DES
- 3002750\_WIND.DES
- 3002750\_WIND.DES
- 3002750\_WIND.DES
- 3002750\_WIND.DES
- 3002750\_WIND.DES
- 3002750\_WIND.DES

APPROVAL	TITLE	NAME
DK	DRAFTER	L. HESLOP
	DRAFTING CHECK	R. GOOSEN
	DESIGNER	B. LEJANO
	DESIGN CHECK	T. MEADOWS
	PROJECT MANAGER	K. DECANHA
	PROJECT DIRECTOR	D. KEEP



DESIGNER  
**SMEC**  
Member of the Surlana Jurong Group  
ABN 47 065 475 149  
LEVEL 9, 12 MOORE STREET  
CANNBERRA ACT 2601 AUSTRALIA  
SMEC PROJECT No 3002750

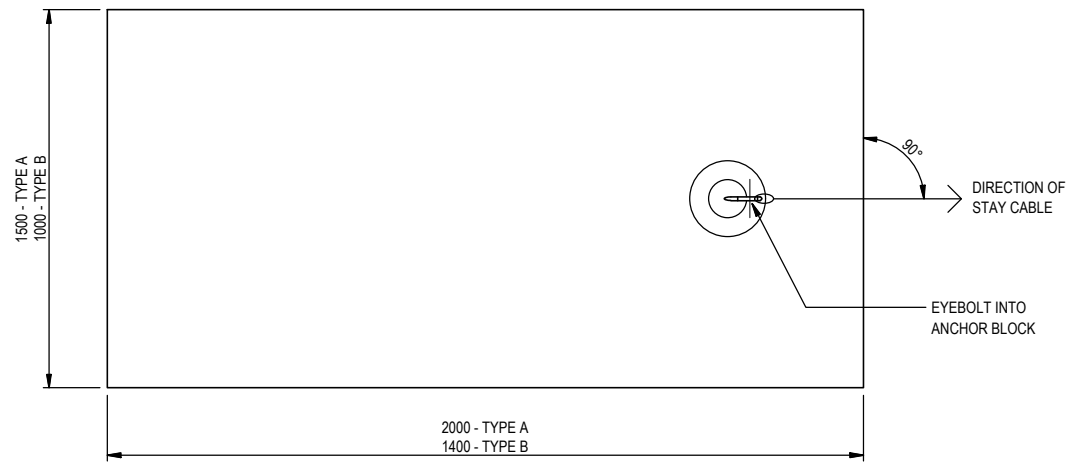
CHECK PRINT		PRELIM <input type="checkbox"/>	FINAL <input type="checkbox"/>
DISCIPLINE		INITIAL	DATE
DISCIPLINE			
DISCIPLINE			
DISCIPLINE			
DISCIPLINE			
BACKDRAFTED/CORRECTED			
CONFIRMED			

PROJECT TITLE WILLIAM HOVELL DRIVE DUPLICATION		SCALE AS SHOWN	PHASE PSP	PROJECT / DRAWING No. 3002750-GE-0111	REVISION 0
MISCELLANEOUS DETAILS FAUNA CROSSING ROPE BRIDGE SHEET 1					

DR

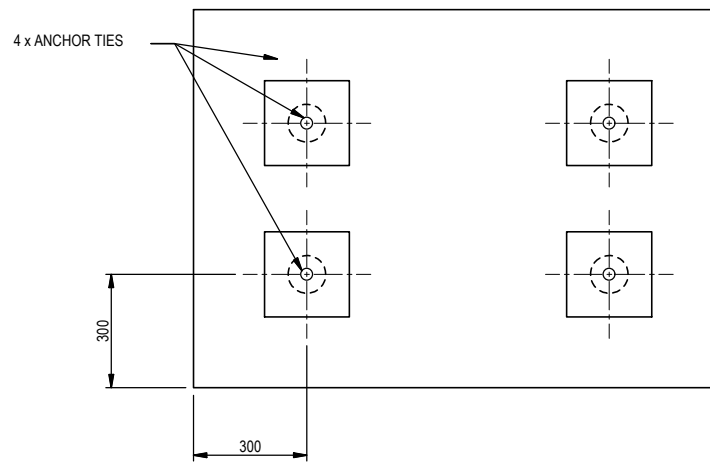
**CONTROLLED COPY**  
**NO FOR CONSTRUCTION**





PLAN - (REINFORCEMENT NOT SHOWN FOR CLARITY)

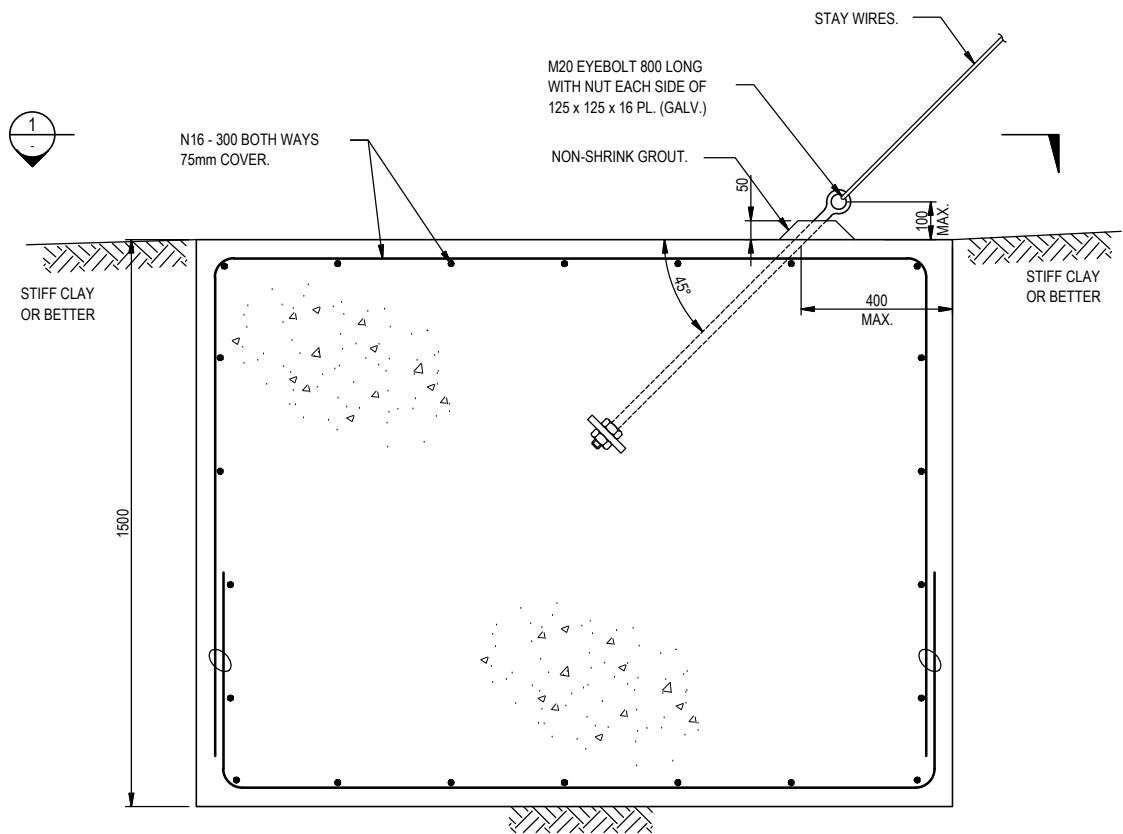
SECTION 1  
SCALE 1:10



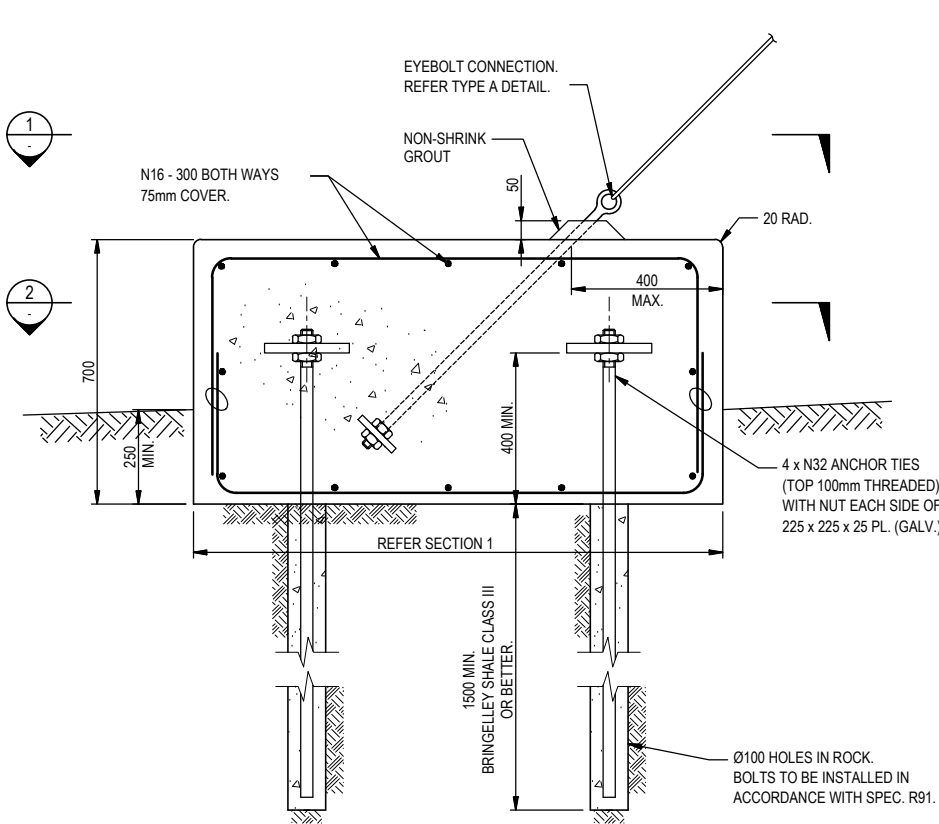
PLAN - (REINFORCEMENT NOT SHOWN FOR CLARITY)

SECTION 2  
SCALE 1:10

ANCHOR BLOCKS (TYPE A & B)  
CONCRETE STRENGTH  
TO BE  $f_c=32$  MPa.



STAY WIRE ANCHOR BLOCK - TYPE A  
SCALE 1:20 AT A3



STAY WIRE ANCHOR BLOCK - TYPE B (IN ROCK)  
SCALE 1:20 AT A3

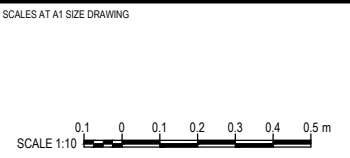
**UNCONTROLLED COPY**  
**Check Print**  
**NOT FOR CONSTRUCTION**

150 mm ON ORIGINAL  
150  
140  
130  
120  
110  
100  
90  
80  
70  
60  
50  
40  
30  
20  
10  
0

DRAWING FILE LOCATION / NAME V:\Vault\Projects\3002750\CAD\DWG\01_GE_General\3002750-GE-0113.dwg		PLOT DATE 27 May 2022		TIME 09:25:25	
REV	DATE	AMENDMENT / REVISION DESCRIPTION	WVR No.	APPROVAL	TITLE
A	27.05.2022	DETAILED DESIGN, SHARED PATH ALIGNMENT CHANGES	0	DK	

**REVISION  
IN PROGRESS**

TITLE	NAME
DRAFTER	L. HESLOP
DRAFTING CHECK	R. GOOSEN
DESIGNER	B. LEJANO
DESIGN CHECK	T. MEADOWS
PROJECT MANAGER	K. DECANHA
PROJECT DIRECTOR	D. KEEP



DESIGNER  
**SMEC**  
Member of the Surlana Jurong Group  
ABN 47 065 475 149  
LEVEL 9, 12 MOORE STREET  
CANBERRA ACT 2601 AUSTRALIA  
SMEC PROJECT No 3002750

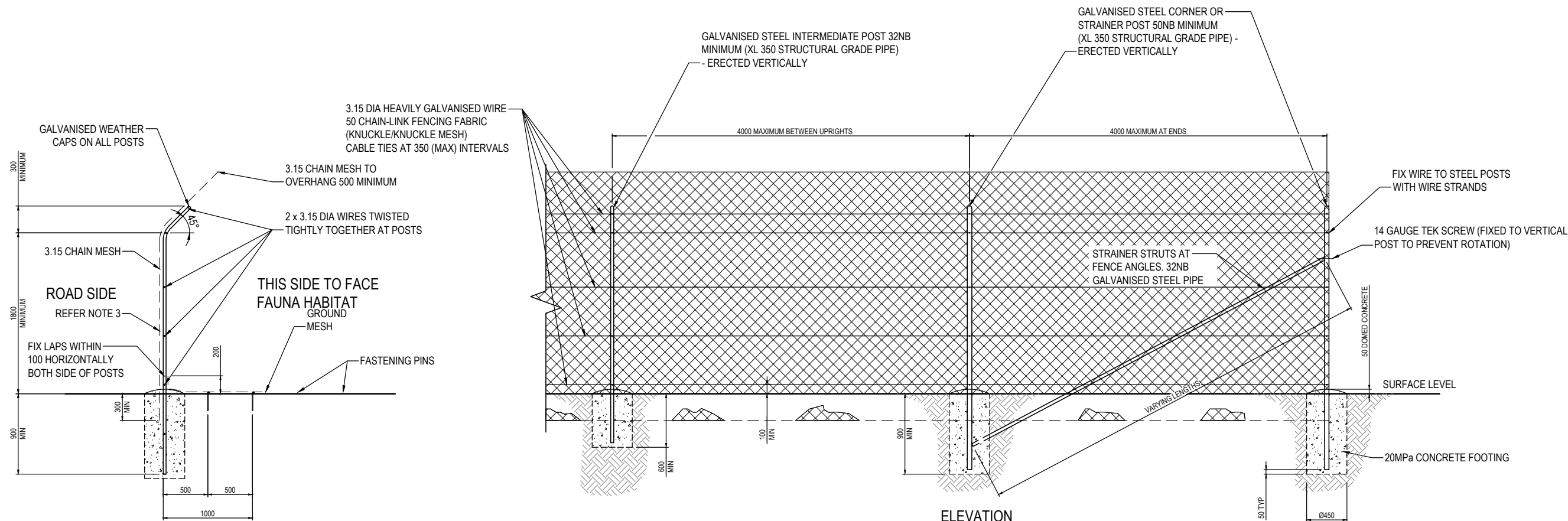
DR

<b>CHECK PRINT</b>		PRELIM <input type="checkbox"/>	FINAL <input type="checkbox"/>
DISCIPLINE		INITIAL	DATE
DISCIPLINE			
DISCIPLINE			
DISCIPLINE			
BACKDRAFTED/CORRECTED			
CONFIRMED			

PROJECT TITLE WILLIAM HOVELL DRIVE DUPLICATION		PROJECT / DRAWING No 3002750-GE-0113	
MISCELLANEOUS DETAILS FAUNA CROSSING ROPE BRIDGE SHEET 3		SCALE AS SHOWN	PHASE PSP
		REVISION 0	

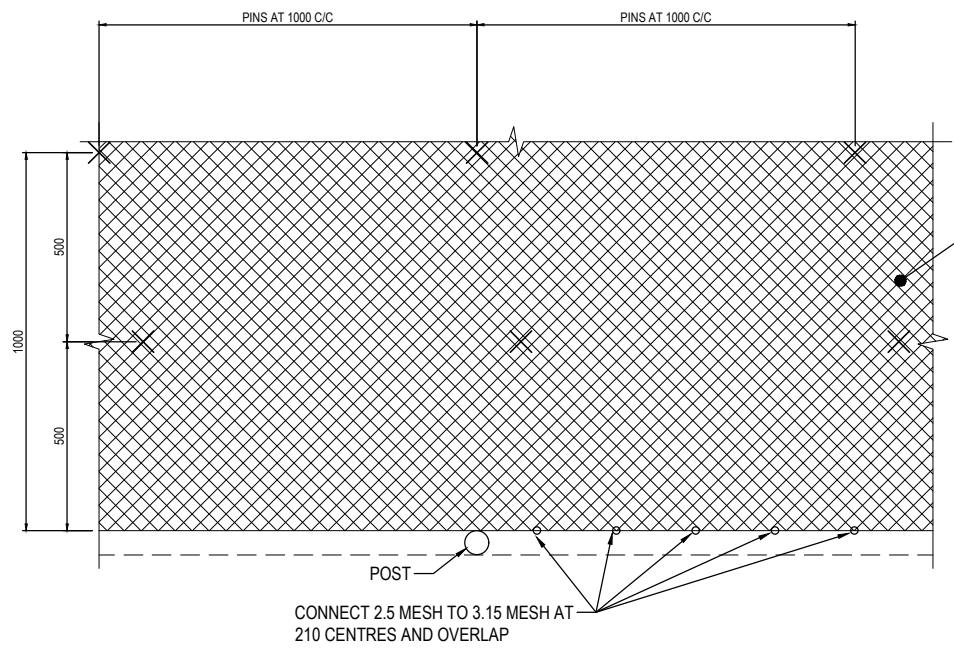




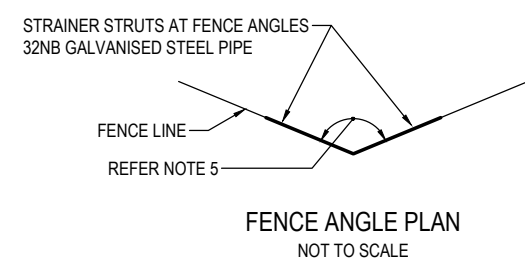
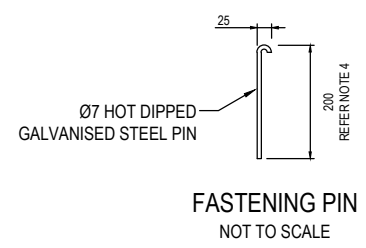


TYPICAL SECTION  
FAUNA EXCLUSION  
FENCE  
SCALE 1:25

ELEVATION  
FAUNA EXCLUSION FENCE  
SCALE 1:25



GROUND MESH FIXING DETAIL  
FAUNA EXCLUSION FENCE  
SCALE 1: 10



**UNCONTROLLED COPY**  
**Check Print**  
**NOT FOR CONSTRUCTION**

150 mm ON ORIGINAL  
A1

DRAWING FILE LOCATION / NAME V:\Vault\Projects\3002750\CAD\DWG\01_GE_General\3002750-GE-0131.dwg		PLOT DATE 27 May 2022		TIME 09:26:40	
EXTERNAL REFERENCE FILES		REV	DATE	AMENDMENT / REVISION DESCRIPTION	WVR No.
		A	27.05.2022	DETAILED DESIGN, SHARED PATH ALIGNMENT CHANGES	0
REVISION IN PROGRESS		APPROVAL	TITLE	NAME	
		DK	DRAFTER	L. HESLOP	
			DRAFTING CHECK	R. GOOSEN	
			DESIGNER	B. LEJANO	
			DESIGN CHECK	T. MEADOWS	
			PROJECT MANAGER	K. DECANHA	
			PROJECT DIRECTOR	D. KEEP	
SCALES AT A1 SIZE DRAWING		DESIGNER		SMEC	
SCALE 1:25		Member of the Surbana Jurong Group		ABN 47 065 475 149	
0.25 0 0.50 1.00 1.25 m		LEVEL 9, 12 MOORE STREET CANBERRA ACT 2601 AUSTRALIA SMEC PROJECT No 3002750		CHECK PRINT	
		PRELIM <input type="checkbox"/> FINAL <input type="checkbox"/>		PROJECT TITLE	
		INITIAL DATE		WILLIAM HOVELL DRIVE DUPLICATION	
				MISCELLANEOUS DETAILS EXCLUSION FENCE SHEET 1	
		SCALE	PHASE	PROJECT / DRAWING No.	REVISION
		AS SHOWN	PSP	3002750-GE-0131	0

DR