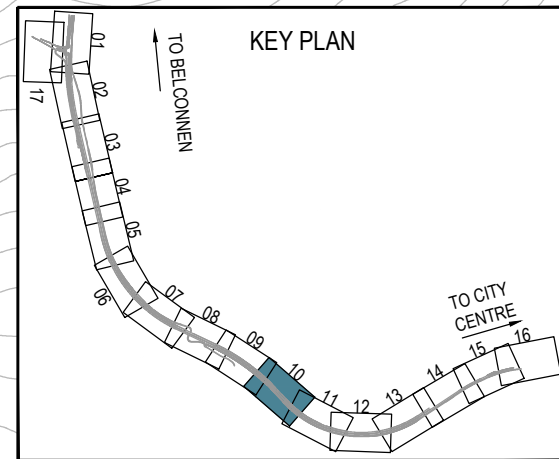


THE PINNACLE NATURE RESERVE



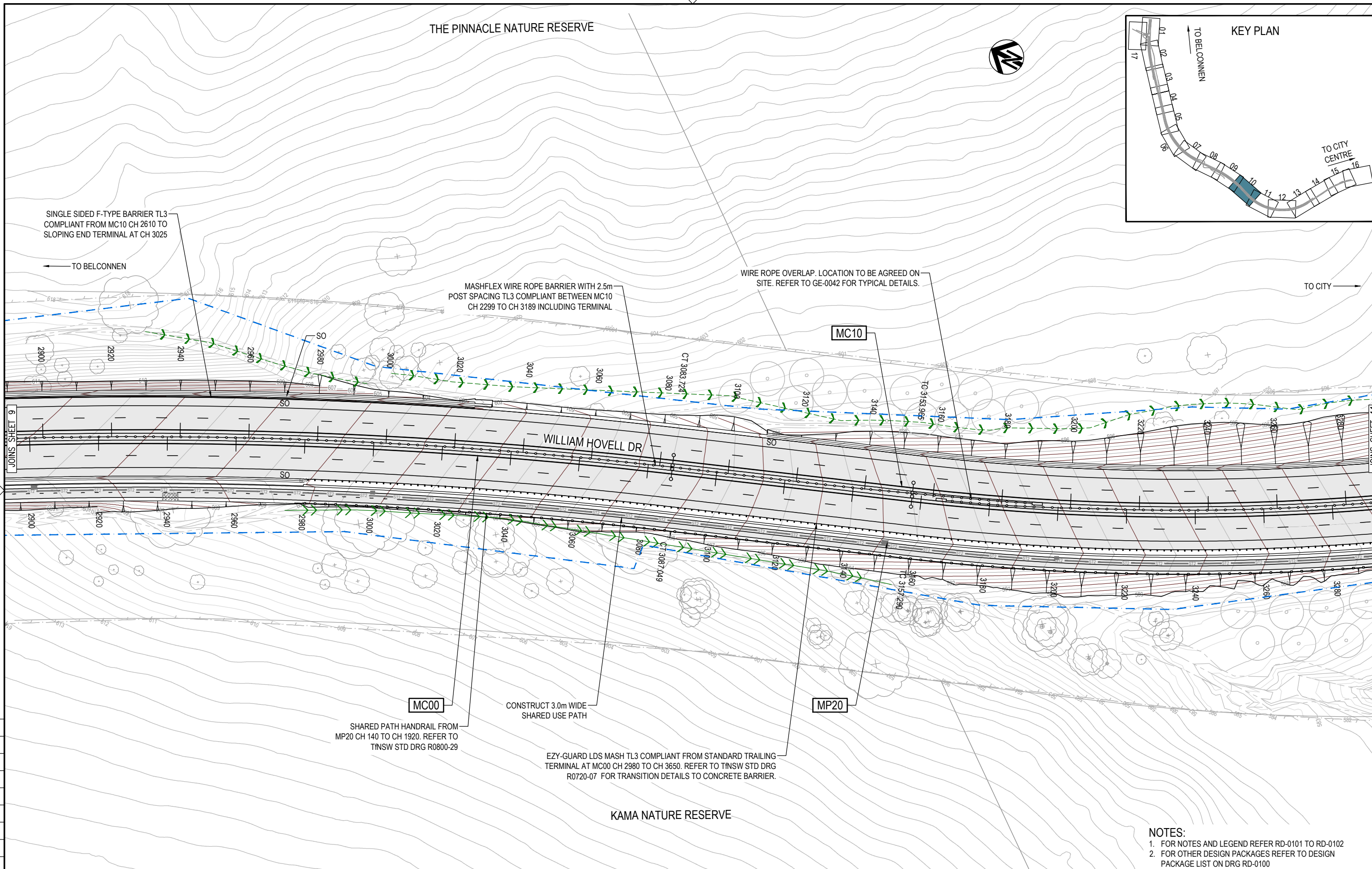
SINGLE SIDED F-TYPE BARRIER TL3 COMPLIANT FROM MC10 CH 2610 TO SLOPING END TERMINAL AT CH 3025

TO BELCONNEN

MASHFLEX WIRE ROPE BARRIER WITH 2.5m POST SPACING TL3 COMPLIANT BETWEEN MC10 CH 2299 TO CH 3189 INCLUDING TERMINAL

WIRE ROPE OVERLAP. LOCATION TO BE AGREED ON SITE. REFER TO GE-0042 FOR TYPICAL DETAILS.

TO CITY



SHARED PATH HANDRAIL FROM MP20 CH 140 TO CH 1920. REFER TO TNSW STD DRG R0800-29

CONSTRUCT 3.0m WIDE SHARED USE PATH

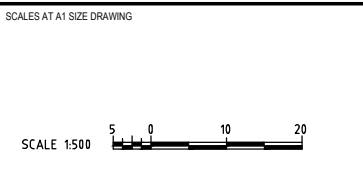
EZY-GUARD LDS MASH TL3 COMPLIANT FROM STANDARD TRAILING TERMINAL AT MC00 CH 2980 TO CH 3650. REFER TO TNSW STD DRG R0720-07 FOR TRANSITION DETAILS TO CONCRETE BARRIER.

KAMA NATURE RESERVE

- NOTES:
1. FOR NOTES AND LEGEND REFER RD-0101 TO RD-0102
 2. FOR OTHER DESIGN PACKAGES REFER TO DESIGN PACKAGE LIST ON DRG RD-0100

150 mm ON ORIGINAL
A1

DRAWING FILE LOCATION / NAME V:\Vault\Projects\3002750\CAD\DWG\03_RD_General_Arrangement\3002750-RD-0119.dwg		PLOT DATE 24 May 2024		TIME 10:40:44	
EXTERNAL REFERENCE FILES		REV	DATE	AMENDMENT / REVISION DESCRIPTION	WVR No.
\WIND_BORRYX \WIND_CONTRX \WIND_DES \WIND_DES_CAD \WIND_DES_CTRL_500 \WIND_DES_CTRL_500 \WIND_SURVX \WIND_SURVX \WIND_UTILX \WIND_UTILX \WIND_UTILX_500 \WIND_UTILX_500 \WIND_UTILX_TKT_GA \WIND_UTILX_TKT_GA \WIND_UTILX_EX \WIND_UTILX_EX \WIND_UTILX_FENCE \WIND_UTILX_FENCE \WIND_UTILX_FENCE \WIND_UTILX_FENCE		A	19.06.2020	PRELIMINARY SKETCH PLAN	0007
		B	08.10.2020	PRELIMINARY SKETCH PLAN	0014
		C	13.11.2020	PRELIMINARY SKETCH PLAN SUBMISSION	0015
		D	28.11.2023	DRAFT - ISSUED FOR RSA	0029
		E	29.02.2024	DRAFT DOCUMENT READINESS (DR) SUBMISSION	0036
		F	24.05.2024	FINAL DOCUMENT READINESS (DR) SUBMISSION	0037
		APPROVAL	TITLE	NAME	
		DK	DRAFTER	N. BROOKE-TAYLOR	
		DK	DRAFTING CHECK	X. SECUBAN	
		T.VN	DESIGNER	M. WATSON	
		T.VN	DESIGN CHECK	L. MULYADI	
		T.VN	PROJECT MANAGER	K. DECANHA	
		T.VN	PROJECT DIRECTOR	T. VAN NIEKERK	



DESIGNER

Member of the Surbana Jurong Group
ABN 47 065 475 149

LEVEL 9, 12 MOORE STREET
CANBERRA ACT 2601 AUSTRALIA
SMEC PROJECT No 3002750

CLIENT

Transport Canberra & City Services

PROJECT TITLE		WILLIAM HOVELL DRIVE DUPLICATION	
GENERAL ARRANGEMENT PLAN		SHEET 10	
SCALE	PHASE	PROJECT / DRAWING No.	REVISION
AS SHOWN	DETAIL DESIGN	3002750-RD-0119	F