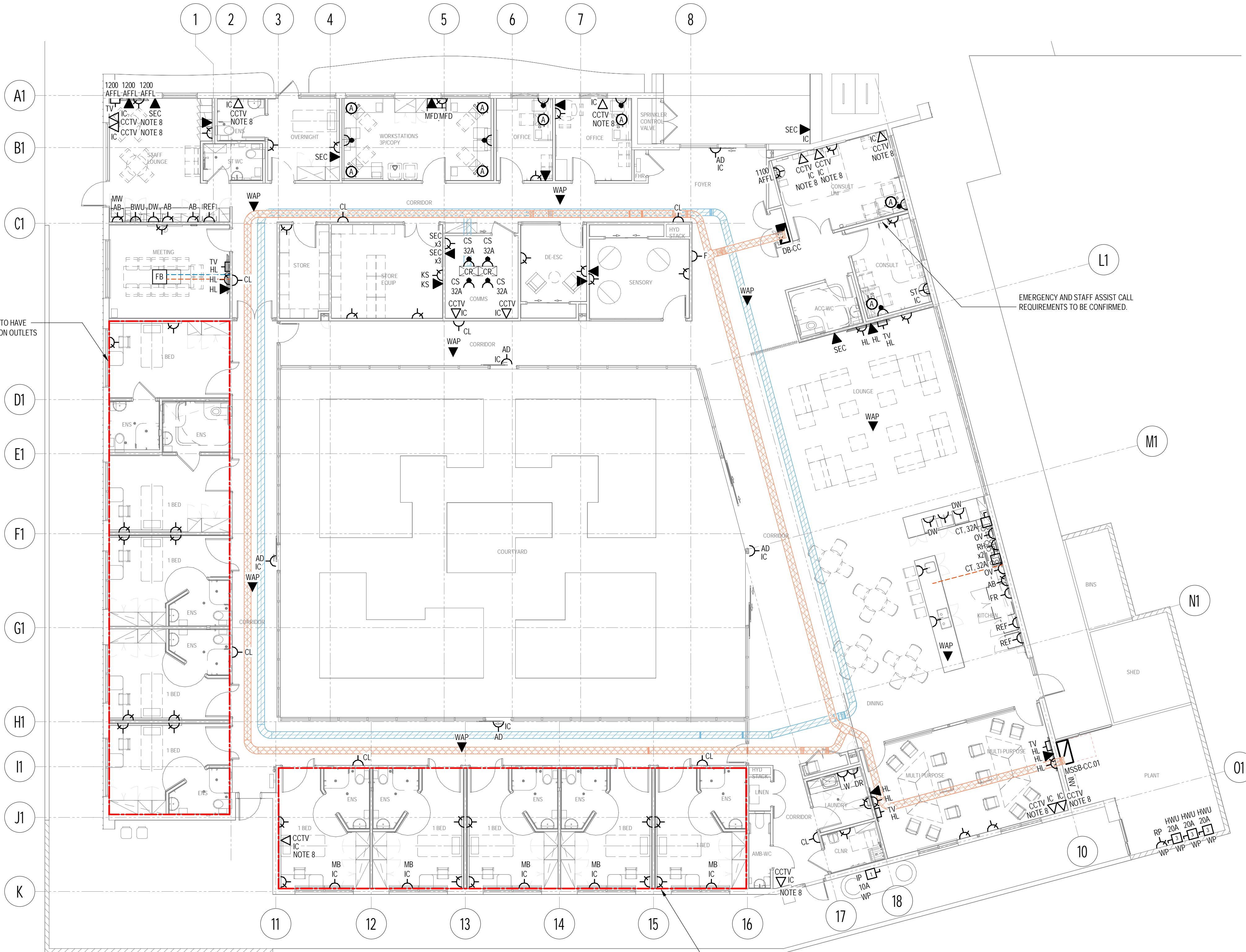


KEYPLAN

NOTES

- FOR LEGEND AND SYMBOLS REFER TO DRAWING E001.
- ALL WORKS TO BE DONE IN ACCORDANCE TO AS/NZS 3000.
- THIS DRAWING TO BE READ IN CONJUNCTION WITH ALL OTHER ELECTRICAL DRAWINGS AND THE SPECIFICATION.
- COORDINATE FINAL LOCATIONS OF ALL ELECTRICAL EQUIPMENT WITH OTHER SERVICES ON SITE TO MECHANICAL, FIRE, HYDRAULICS AND ARCHITECTURAL SERVICES DRAWINGS AS NECESSARY.
- PROVIDE COMBINED MCB AND 30mA RCD IN DISTRIBUTION BOARD FOR ALL GENERAL POWER SUB-CIRCUITS OF 20A OR LESS. BALANCE THE LOAD EQUALLY ACROSS ALL THREE PHASES.
- PROVIDE POWER, DATA AND MATV OUTLET FOR TELEVISION SET.
- WAP LOCATIONS ARE INDICATIVE ONLY. FINAL REQUIREMENTS TO BE CONFIRMED BY CONTRACTOR.
- PROVIDE SINGLE DATA OUTLET IN CEILING FOR ALL EXTERNAL CCTV.
- INFRASTRUCTURE CONNECTIVITY REQUIREMENTS FOR FUTURE PATIENT INFORMATION AND ENTERTAINMENT SYSTEM (PIES). FINAL REQUIREMENTS TO BE CONFIRMED.



GROUND LEVEL - CATHOLIC CARE POWER LAYOUT  
1 : 100

THIS LINE DENOTES AREAS TO HAVE POWER AND COMMUNICATION OUTLETS AS ANTI-LIGATURE

REV	DATE	BY	DESCRIPTION	CHK	APP
P4	07.07.2023	NM	100% PSP	JJ	HH
P3	28.04.2023	NM	80% PSP	JJ	HH
P2	03.03.2023	NM	50% PSP	SG	HH
P1	03.02.2023	MAN	DRAFT 50% PSP	SG	HH
DRAWING STATUS: PRELIMINARY					



Level 2, 121 Marcus Clarke Street, Canberra ACT 2600  
Tel: +61 2 6201 9600 / GPO Box 1551  
<http://www.wsp.com>

CLIENT:



ARCHITECT:

PROJECT:

WATSON HEALTH HUB

TITLE:

ELECTRICAL SERVICES  
CATHOLIC CARE  
POWER AND COMMUNICATION LAYOUT

SCALE @ A1:

1:100

CHECKED:

JJ

APPROVED:

HH

PROJECT NUMBER:

PS132290

DRAWN:

MAN

DATE:

JANUARY 2023

DRAWING No:

E210

REV:

P4

© WSP Australia Pty Ltd