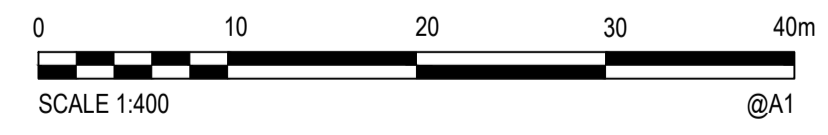


SUBJECT SITE
 PART OF BLOCK 4 SECTION 109
 TENNIS FACILITY
 AREA = 16,062 m²

CUT/FILL	Lower_value	Upper_value	Colour	
-1.1	to	-1.0	m	Dark Red
-1.0	to	-0.9	m	Purple
-0.9	to	-0.8	m	Dark Purple
-0.8	to	-0.7	m	Magenta
-0.7	to	-0.6	m	Bright Magenta
-0.6	to	-0.5	m	Red
-0.5	to	-0.4	m	Orange-Red
-0.4	to	-0.3	m	Orange
-0.3	to	-0.2	m	Light Orange
-0.2	to	-0.1	m	Yellow-Orange
-0.1	to	0.0	m	Yellow
0.0	to	0.1	m	Light Green
0.1	to	0.2	m	Green
0.2	to	0.3	m	Dark Green
0.3	to	0.4	m	Forest Green
0.4	to	0.5	m	Dark Forest Green
0.5	to	0.6	m	Very Dark Green
0.6	to	0.7	m	Dark Teal
0.7	to	0.8	m	Teal
0.8	to	0.9	m	Light Blue-Teal
0.9	to	1.0	m	Light Blue
1.0	to	1.1	m	Blue
1.1	to	1.2	m	Dark Blue



XREFs: X:1\CD\019-XD-X-EX_SERVICES-X-SURVEY-X-BASE-X-PROPOSED_SERVICES-X-BASE_LABEL-X-DESIGN_CONTOURS-X-ISO_SECTION1
 CAD_File_C:\Project\Wise-Drive\Stantec\304-100000\304000930\Drawings\Build\FSP-304000930-FSP-1012.ISO.dwg

Rev.	Date	Description	Des.	Verif.	Appd.
C	21/11/2023	FOR APPROVAL	TM	GZ	JPS
B	13/11/2023	FOR APPROVAL	TM	GZ	JPS
A	23/05/2023	FINAL SKETCH PLAN	TM	GZ	JPS



© Stantec Limited All Rights Reserved.
 This document is produced by Stantec Limited solely for the benefit of and use by the client in accordance with the terms of the retainer. Stantec Limited does not and shall not assume any responsibility or liability whatsoever to any third party arising out of any use or reliance by third party on the content of this document.



Drawn	NH	Date	23/05/2023
Checked	AS	Date	23/05/2023
Designed	TM	Date	23/05/2023
Verified	GZ	Date	23/05/2023
Approved	JPS	Date	23/05/2023

Client **Chief Minister, Treasury and Economic Development Directorate**
 Project **NEW GUNGAHLIN TENNIS FACILITY DEVELOPMENT APPLICATION (AMAROO, BLOCK 4, SECTION 109 - NORTHERN SIDE)**
 Title **ISOPACH**

Status FOR APPROVAL			
NOT TO BE USED FOR CONSTRUCTION PURPOSES			
Page No.	Datum	Scale	Size
5.01	AHD	1:1000	A1
Drawing Number			Revision
304000930-ISO-1012			C