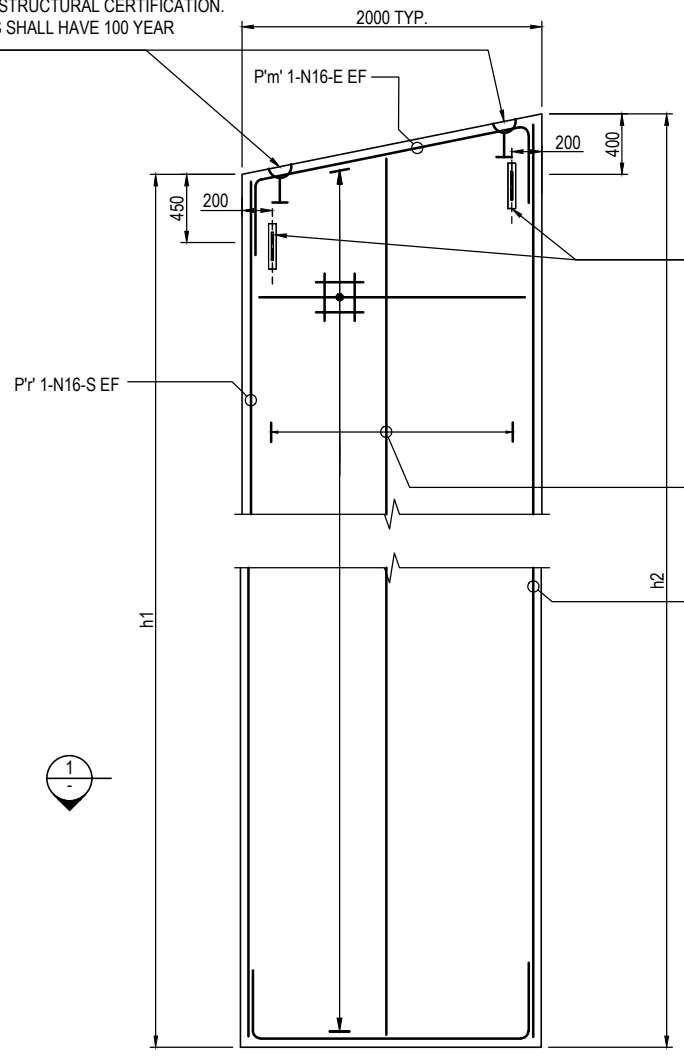
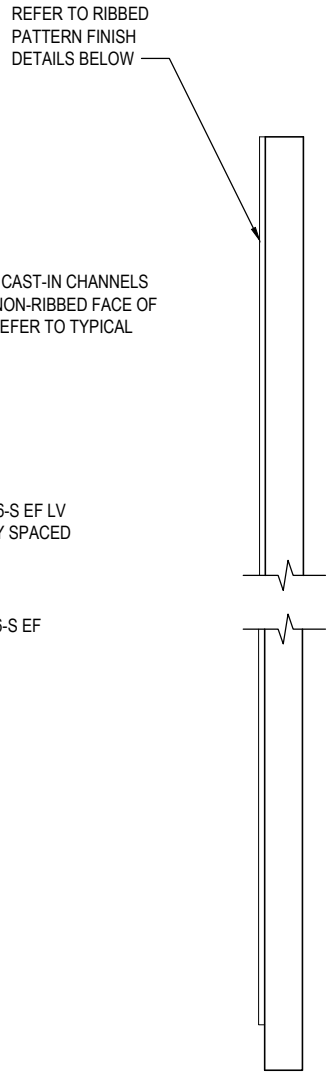


PRECAST MANUFACTURER SHALL BE RESPONSIBLE FOR CAST-IN LIFTING ANCHOR DESIGN. ANY EXTRA REINFORCEMENT REQUIRED FOR LIFTING AND STRUCTURAL CERTIFICATION. LIFTING ANCHORS SHALL HAVE 100 YEAR DESIGN LIFE.



TYPICAL PRECAST FASCIA PANEL ELEVATION
VIEWED FROM FRONT FACE OF PANEL

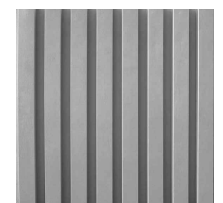


TYPICAL PRECAST PANEL END VIEW
REINFORCEMENT OMITTED FOR CLARITY

PANEL NUMBER	CONCRETE PANEL DIMENSIONS			BAR MARK				FINISH
	h1	h2	WIDTH	"m"	"p"	"q"	"r"	
P1	2810	2815	2000	11	12	13	14	F1
P2	2815	2820		21	22	23	24	F2
P3	2820	2820		31	32	33	34	F2
P4	2820	2820		41	42	43	44	F2
P5	2820	2815		51	52	53	54	F1
P6	3115	3110		61	62	63	64	F1
P7	3110	3100		71	72	73	74	F1
P8	3100	3090		81	82	83	84	F1
P9	3090	3075		91	92	93	94	F2
P10	3075	3060		101	102	103	104	F1
P11	3360	3340		111	112	113	114	F2
P12	3340	3320		121	122	123	124	F2
P13	3320	3295		131	132	133	134	F2
P14	3295	3270		141	142	143	144	F1
P15	3270	3240		151	152	153	154	F1
P16	3240	3210		161	162	163	164	F2
P17	3210	3175		171	172	173	174	F2
P18	3175	3140		181	182	183	184	F1
P19	3440	3400		191	192	193	194	F1
P20	3400	3360		201	202	203	204	F2
P21	3360	3315		211	212	213	214	F1
P22	3315	3265		221	222	223	224	F1
P23	3265	3220		231	232	233	234	F2
P24	3220	3165		241	242	243	244	F2
P25	3465	3410		251	252	253	254	F1
P26	3410	3355		261	262	263	264	F1
P27	3355	3295		271	272	273	274	F1
P28	3295	3235		281	282	283	284	F2
P29	3235	3170		291	292	293	294	F2
P30	3170	3105		301	302	303	304	F1
P31	3105	3035		311	312	313	314	F2
P32	3335	3260		321	322	323	324	F1
P33	3260	3190		331	332	333	334	F1
P34	3190	3110		341	342	343	344	F1

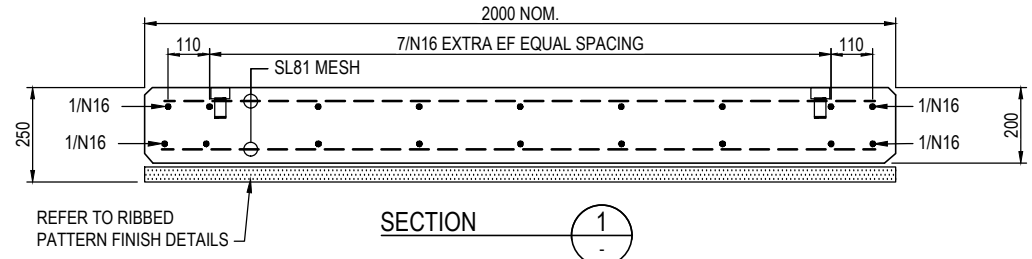
PANEL NUMBER	CONCRETE PANEL DIMENSIONS			BAR MARK				FINISH
	h1	h2	WIDTH	"m"	"p"	"q"	"r"	
P35	3110	3030	2000	351	352	353	354	F2
P36	3030	2950		361	362	363	364	F2
P37	2950	2865		371	372	373	374	F1
P38	3165	3080		381	382	383	384	F2
P39	3080	2990		391	392	393	394	F2
P40	2990	2895		401	402	403	404	F2
P41	2895	2800		411	412	413	414	F1
P42	2800	2705		421	422	423	424	F1
P43	2705	2605		431	432	433	434	F1
P44	2905	2805		441	442	443	444	F2
P45	2805	2700		451	452	453	454	F2
P46	2700	2600		461	462	463	464	F1
P47	2600	2495		471	472	473	474	F1
P48	2495	2390		481	482	483	484	F2
P49	2690	2590		491	492	493	494	F1
P50	2590	2485		501	502	503	504	F2
P51	2485	2385		511	512	513	514	F1
P52	2385	2280		521	522	523	524	F1
P53	2280	2175		531	532	533	534	F1
P54	2175	2075		541	542	543	544	F1
P55	2375	2270		551	552	553	554	F1
P56	2270	2170		561	562	563	564	F1
P57	2170	2065		571	572	573	574	F1
P58	2065	1965		581	582	583	584	F1
P59	1965	1865		591	592	593	594	F1
P60	2165	2065		601	602	603	604	F2
P61	2065	1965		611	612	613	614	F1
P62	1965	1865		621	622	623	624	F1
P63	1865	1765		631	632	633	634	F1
P64	1765	1665		641	642	643	644	F1
P65	1965	1860		651	652	653	654	F1
P66	1860	1760		661	662	663	664	F2
P67	1760	1660		671	672	673	674	F1
P68	1660	1560		681	682	683	684	F1

LEGEND
F1 - RIBBED PATTERN FINISH
F2 - SMOOTH FINISH



RIBBED PATTERN FINISH DETAIL

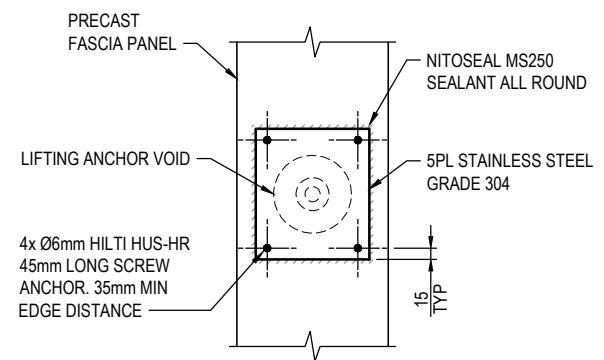
- * CAST PROFILED SURFACE OF FACE OF PANEL USING LINER EQUAL TO RECKLI 1/46 RIPPE TYPE N (AS SHOWN ABOVE) DEPTH 50mm
- * OXIDE COLOUR EQUAL TO CONCRETE COLOUR SOLUTIONS - PEWTER
- * APPLY ANTI GRAFFITI COATING SYSTEM TO VISABLE SIDE OF PANEL



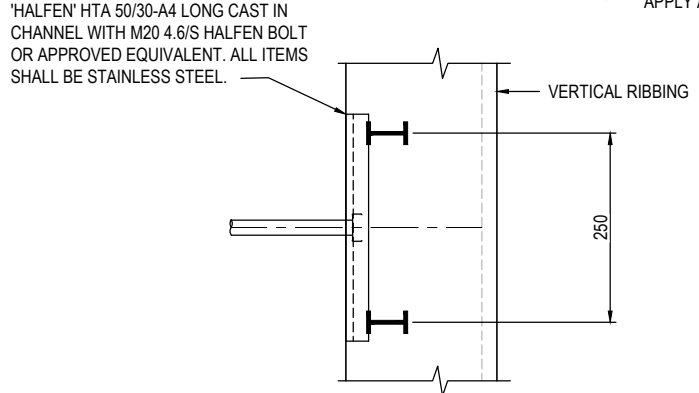
PRECAST CONCRETE NOTES

1. THE PRECAST FASCIA PANELS HAVE BEEN DESIGNED FOR IN-SERVICE LOADING CONDITIONS ONLY. ADDITIONAL REINFORCEMENT FOR TRANSPORTATION AND LIFTING IF REQUIRED SHALL BE SPECIFIED BY THE PRECAST MANUFACTURER.
2. CONTRACTOR SHALL BE RESPONSIBLE FOR THE PREPARATION OF PRECAST PANEL SHOP DRAWINGS. SHOP DRAWING INCLUDING THE TEMPORARY WORKS DESIGN FOR THE HANDLING, TRANSPORTATION AND ERECTION OF THE PANELS SHALL BE SUBMITTED TO THE PRINCIPAL FOR APPROVAL PRIOR TO FABRICATION OF THE PANELS.
3. CAST-IN LIFTING AND SUPPORT DEVICES SHALL BE HOT DIPPED GALVANISED IN ACCORDANCE WITH TNSW SPECIFICATION B201. LOCATION OF CAST-IN LIFTING ANCHORS INCLUDING POSSIBLE FRONT FACE LIFTING ANCHORS AND SUPPORT DEVICES SHALL BE SPECIFIED BY THE PRECAST MANUFACTURER TO SUIT PROPOSED ERECTION METHODOLOGY.
4. ALL MANUFACTURING, HANDLING AND ERECTION SHALL COMPLY WITH THE REQUIREMENTS OF TNSW SPECIFICATION B115.
5. PRECAST FASCIA PANELS SHALL BE PREMIUM SPECIAL BLACK AT 4.15%. SAMPLE PANELS SHALL BE PROVIDED FOR REVIEW BY THE URBAN DESIGNER. ALL PANELS PROVIDED THEREAFTER SHOULD BE OF EQUIVALENT QUALITY TO THE APPROVED PANELS.
6. CONCRETE EXPOSURE CLASSIFICATION FOR PRECAST CONCRETE TO BE B1.
7. MINIMUM 28 DAY COMPRESSIVE STRENGTH FOR PRECAST CONCRETE SHALL BE 50 MPa.
8. COVER TO REINFORCEMENT TO BE 30mm UNO.
9. MINIMUM TOTAL BINDER CONTENT SHALL BE 465 Kg/m3 WITH TYPE GB CEMENT WITH 20% FLY ASH.

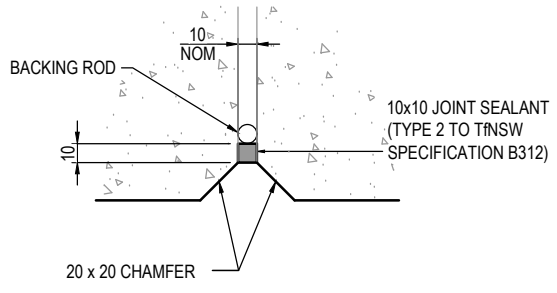
DR



LIFTING ANCHOR COVER PLATE DETAIL



TYPICAL CAST-IN CHANNEL DETAIL



TYPICAL PRECAST PANEL JOINT DETAIL

150 mm ON ORIGINAL
150
140
130
120
110
100
90
80
70
60
50
40
30
20
10
0

DRAWING FILE LOCATION / NAME V:\Vault\Projects\3002750\CAD\DWG\17_SC_Struct\RETAINING_WALLS\3002750-RW-2004.dwg		PLOT DATE 29 Feb 2024		TIME 19:22:12	
EXTERNAL REFERENCE FILES		REV	DATE	AMENDMENT / REVISION DESCRIPTION	
		A	12.03.2022	DETAIL DESIGN	
		B	29.02.2024	DRAFT DOCUMENT READINESS (DR) SUBMISSION	
WVR No.	APPROVAL	TITLE	NAME		
0016	DK	DRAFTER	MSURESH		
0036	T.VN	DRAFTING CHECK	V. RAMAMURTHY		
		DESIGNER	S. MONTGOMERY		
		DESIGN CHECK	R. HUNTER		
		PROJECT MANAGER	K. DECANHA		
		PROJECT DIRECTOR	T. VAN NIEKERK		
SCALES AT A1 SIZE DRAWING		DESIGNER		CLIENT	
SCALE 1:25		 Member of the Surlana Jurong Group ABN 47 065 475 149		 Transport Canberra & City Services	
		LEVEL 9, 12 MOORE STREET CANBERRA ACT 2601 AUSTRALIA SMEC PROJECT No 3002750		PROJECT TITLE WILLIAM HOVELL DRIVE DUPLICATION STRUCTURES AND RETAINING WALLS MW1A PANEL DETAILS- SHEET 2	
SCALE	PHASE	PROJECT / DRAWING No.		REVISION	
AS SHOWN	DETAIL DESIGN	3002750-RW-2004		B	