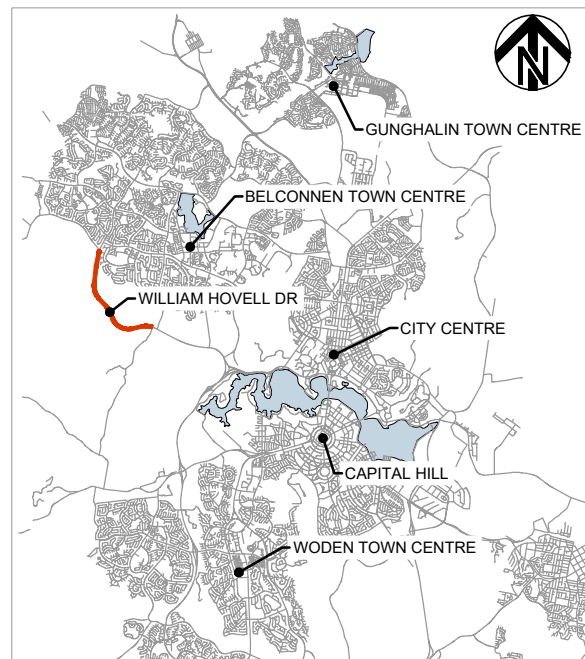
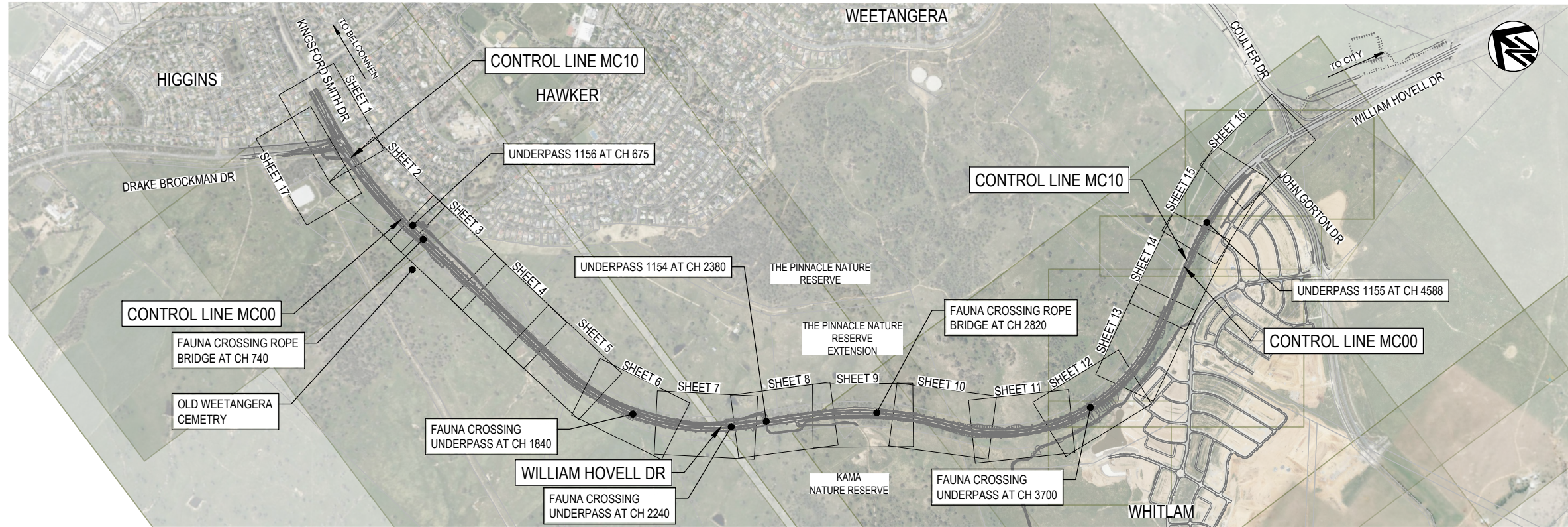


# WILLIAM HOVELL DRIVE DUPLICATION PACKAGE 01 INDEX, TYPICAL SECTIONS, TYPICAL DETAILS AND MISCELLANEOUS DETAILS

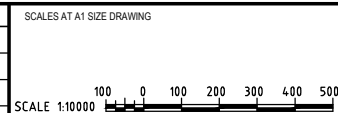


PACKAGE REFERENCES		
PACKAGE 01	INDEX, LOCALITY PLAN, TYPICAL SECTIONS, TYPICAL DETAILS AND MISCELLANEOUS DETAILS	GE
PACKAGE 03	GENERAL ARRANGEMENT PLAN	RD
PACKAGE 04	ROAD ALIGNMENT PLAN	RD
PACKAGE 05	LONGITUDINAL SECTIONS	LS
PACKAGE 06	CROSS SECTIONS	XS
PACKAGE 07	DRAINAGE	DD
PACKAGE 08	ICON WATER	WS
PACKAGE 09	UTILITIES - TELECOMMUNICATIONS, ELECTRICAL	UT
PACKAGE 09.1	DIGITAL, DATA AND TECHNOLOGY SOLUTIONS (DDTS)	DDTS
PACKAGE 10	PAVEMENT AND SUBSOILS	PV
PACKAGE 15	LINES AND SIGNS, TRAFFIC SIGNALS	TCD, TCS
PACKAGE 17	STRUCTURES	ST
PACKAGE 20	CONCEPT EROSION AND SEDIMENT CONTROL	EC
PACKAGE 22	CONCEPT TEMPORARY WORKS PLAN	CS
PACKAGE 110	STREETLIGHTING - RUDDS	
PACKAGE 115	LANDSCAPE MANAGEMENT - ENVIROLINKS	

**DR**

150 mm ON ORIGINAL

DRAWING FILE LOCATION / NAME V:\_Vault\Projects\3002750\CAD\DWG\01_GE_General\3002750-GE-0001.dwg		PLOT DATE 23 May 2024		TIME 16:49:07	
REV	DATE	AMENDMENT / REVISION DESCRIPTION	WVR No.	APPROVAL	TITLE
A	19.06.2020	PRELIMINARY SKETCH PLAN	0007	DK	DRAFTER <i>N. BROOKE-TAYLOR</i>
B	08.10.2020	PRELIMINARY SKETCH PLAN	0014	DK	DRAFTING CHECK <i>X. SECUBAN</i>
C	13.11.2020	PRELIMINARY SKETCH PLAN SUBMISSION	0015	DK	
D	28.11.2023	DRAFT - ISSUED FOR RSA	0029	T.VN	DESIGNER <i>M. WATSON</i>
E	29.02.2024	DRAFT DOCUMENT READINESS (DR) SUBMISSION	0036	T.VN	DESIGN CHECK <i>L. MULYADI</i>
F	24.05.2024	FINAL DOCUMENT READINESS (DR) SUBMISSION	0037	T.VN	PROJECT MANAGER <i>K. DECANHA</i>
					PROJECT DIRECTOR <i>T. VAN NIEKERK</i>



DESIGNER

Member of the Surbana Jurong Group  
ABN 47 065 475 149

LEVEL 9, 12 MOORE STREET  
CANBERRA ACT 2601 AUSTRALIA  
SMEC PROJECT No 3002750

CLIENT

Transport Canberra & City Services

PROJECT TITLE WILLIAM HOVELL DRIVE DUPLICATION		PROJECT / DRAWING No. 3002750-GE-0001	
PROJECT SITE PLAN		SCALE AS SHOWN	REVISION F
		PHASE DETAIL DESIGN	