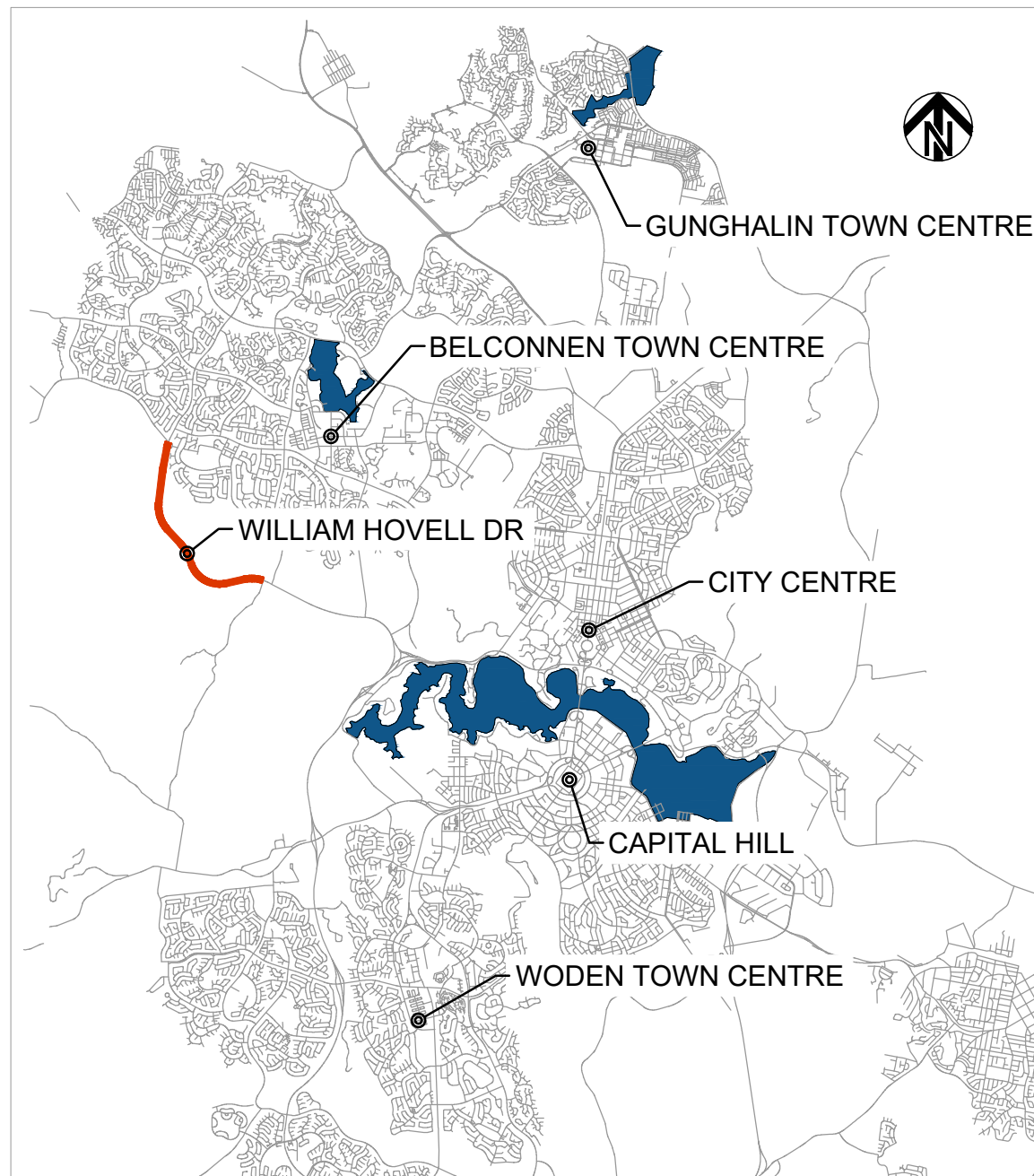


ACT
Government
Transport Canberra & City Services



LOCALITY PLAN
NTS

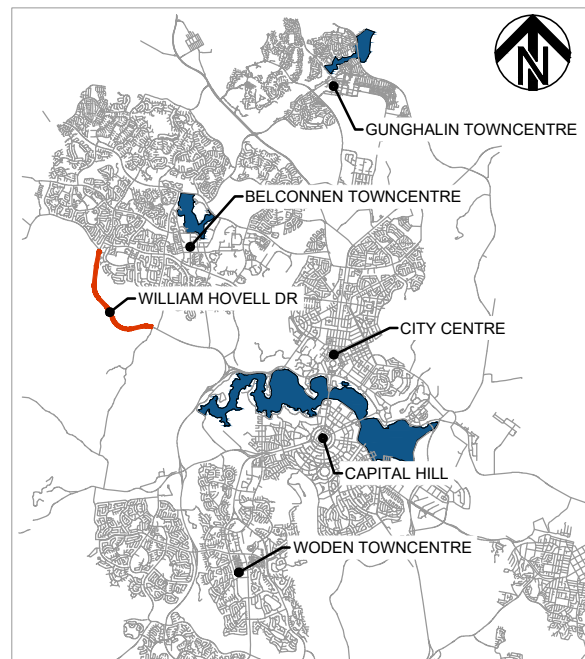
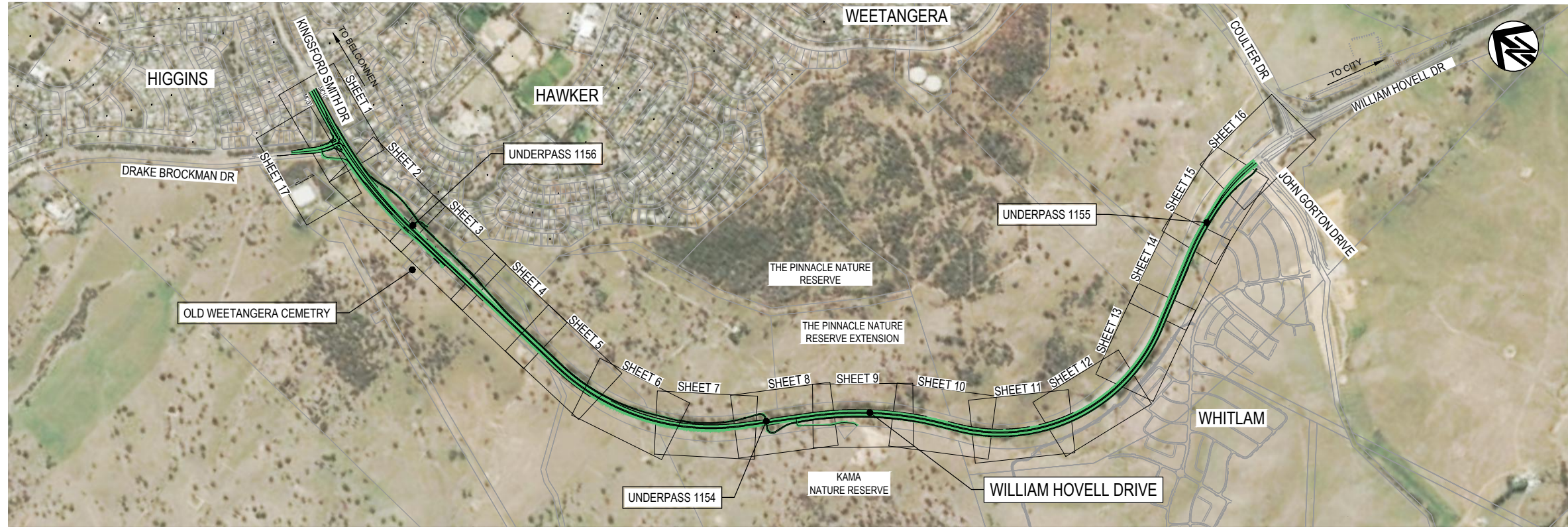
WILLIAM HOVELL DRIVE DUPLICATION 3002750

PRELIMINARY SKETCH PLANS NOVEMBER 2020



Member of the Surbana Jurong Group
SMEC AUSTRALIA PTY LTD
© ABN 47 065 475 149
SUITE 2, LEVEL 1, 243 NORTHBOURNE AVENUE
LYNEHAM ACT 2602 AUSTRALIA
SMEC PROJECT No 3002750

WILLIAM HOVELL DRIVE DUPLICATION PACKAGE 01 INDEX, GENERAL NOTES, TYPICAL DETAILS AND TYPICAL SECTIONS

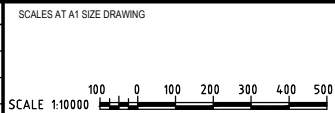


PACKAGE REFERENCES		
PACKAGE 01	INDEX LOCALITY PLAN, GENERAL NOTES, TYPICAL DETAILS AND TYPICAL SECTIONS	GE
PACKAGE 03	GENERAL ARRANGEMENT PLAN	RD
PACKAGE 04	ROAD ALIGNMENT PLAN	RD
PACKAGE 05	LONGITUDINAL SECTIONS	LS
PACKAGE 06	CROSS SECTIONS	XS
PACKAGE 07	DRAINAGE	DD
PACKAGE 08	WATER AND SEWER	WS
PACKAGE 09	UTILITIES - TELECOMMUNICATIONS, ITS, ELECTRICAL	UT
PACKAGE 10	PAVEMENT PLAN, PAVEMENT DETAILS AND SUBSOIL DRAINAGE	PV
PACKAGE 15	LINES AND SIGNS, TCCS TRAFFIC SIGNALS	TC
PACKAGE 17	STRUCTURES	ST
PACKAGE 22	CONSTRUCTION STAGING	CS

150 mm ON ORIGINAL
A1

DRAWING FILE LOCATION / NAME V:_Vault\Projects\3002750\CAD\DWG\01_GE_General\3002750-GE-0001.dwg		PLOT DATE 12 Nov 2020		TIME 14:03:16	
EXTERNAL REFERENCE FILES	REV	DATE	AMENDMENT / REVISION DESCRIPTION	WVR No.	APPROVAL
	A	19.06.2020	PRELIMINARY SKETCH PLAN	0007	DK
	B	08.10.2020	PRELIMINARY SKETCH PLAN	0014	DK
	C	13.11.2020	PRELIMINARY SKETCH PLAN SUBMISSION	0015	DK

APPROVAL	TITLE	NAME
DK	DRAFTER	R. GOOSEN
DK	DRAFTING CHECK	K. CURLEY
DK	DESIGNER	B. LEJANO
DK	DESIGN CHECK	T. MEADOWS
	PROJECT MANAGER	S. RAVEN
	PROJECT DIRECTOR	D. KEEP



DESIGNER

SMEC
Member of the Surlana Jurong Group
SMEC AUSTRALIA PTY LTD
© ABN 47 065 475 149
SUITE 2, LEVEL 1, 243 NORTHBOURNE AVENUE
LYNEHAM ACT 2602 AUSTRALIA
SMEC PROJECT No 3002750

CLIENT

ACT
Government
Transport Canberra & City Services

PROJECT TITLE WILLIAM HOVELL DRIVE DUPLICATION		PROJECT / DRAWING No. 3002750-GE-0001		REVISION C
SCALE AS SHOWN	PHASE PSP			

PRELIMINARY

PROJECT SITE PLAN

DRAWING INDEX

DRAWING NUMBER	DRAWING TITLE
3002750-GE-0000	COVER SHEET AND LOCALITY PLAN
3002750-GE-0001	PROJECT SITE PLAN
3002750-GE-0010	INDEX SHEET 1
3002750-GE-0011	INDEX SHEET 2
3002750-GE-0012	INDEX SHEET 3
3002750-GE-0020	GENERAL NOTES SHEET 1
3002750-GE-0031	TYPICAL SECTIONS SHEET 1
3002750-GE-0032	TYPICAL SECTIONS SHEET 2
3002750-GE-0033	TYPICAL SECTIONS SHEET 3
3002750-GE-0041	TYPICAL DETAILS SHEET 1
3002750-GE-0042	TYPICAL DETAILS SHEET 2
3002750-GE-0043	TYPICAL DETAILS SHEET 3
3002750-GE-0044	TYPICAL DETAILS SHEET 4
3002750-GE-0045	TYPICAL DETAILS SHEET 5
GENERAL ARRANGEMENT	
3002750-RD-0100	GENERAL ARRANGEMENT COVER SHEET
3002750-RD-0101	GENERAL ARRANGEMENT NOTES
3002750-RD-0102	GENERAL ARRANGEMENT NOTES AND LEGEND
3002750-RD-0110	GENERAL ARRANGEMENT PLAN SHEET 1
3002750-RD-0111	GENERAL ARRANGEMENT PLAN SHEET 2
3002750-RD-0112	GENERAL ARRANGEMENT PLAN SHEET 3
3002750-RD-0113	GENERAL ARRANGEMENT PLAN SHEET 4
3002750-RD-0114	GENERAL ARRANGEMENT PLAN SHEET 5
3002750-RD-0115	GENERAL ARRANGEMENT PLAN SHEET 6
3002750-RD-0116	GENERAL ARRANGEMENT PLAN SHEET 7
3002750-RD-0117	GENERAL ARRANGEMENT PLAN SHEET 8
3002750-RD-0118	GENERAL ARRANGEMENT PLAN SHEET 9
3002750-RD-0119	GENERAL ARRANGEMENT PLAN SHEET 10
3002750-RD-0120	GENERAL ARRANGEMENT PLAN SHEET 11
3002750-RD-0121	GENERAL ARRANGEMENT PLAN SHEET 12
3002750-RD-0122	GENERAL ARRANGEMENT PLAN SHEET 13
3002750-RD-0123	GENERAL ARRANGEMENT PLAN SHEET 14
3002750-RD-0124	GENERAL ARRANGEMENT PLAN SHEET 15
3002750-RD-0125	GENERAL ARRANGEMENT PLAN SHEET 16
3002750-RD-0129	GENERAL ARRANGEMENT PLAN SHEET 17
ROAD ALIGNMENT	
3002750-RD-1100	ROAD ALIGNMENT PLAN COVER SHEET
3002750-RD-1101	ROAD ALIGNMENT PLAN SHEET 1
3002750-RD-1102	ROAD ALIGNMENT PLAN SHEET 2
3002750-RD-1103	ROAD ALIGNMENT PLAN SHEET 3
3002750-RD-1104	ROAD ALIGNMENT PLAN SHEET 4
3002750-RD-1105	ROAD ALIGNMENT PLAN SHEET 5
3002750-RD-1106	ROAD ALIGNMENT PLAN SHEET 6
3002750-RD-1107	ROAD ALIGNMENT PLAN SHEET 7

DRAWING INDEX

DRAWING NUMBER	DRAWING TITLE
3002750-RD-1108	ROAD ALIGNMENT PLAN SHEET 8
3002750-RD-1109	ROAD ALIGNMENT PLAN SHEET 9
3002750-RD-1110	ROAD ALIGNMENT PLAN SHEET 10
3002750-RD-1111	ROAD ALIGNMENT PLAN SHEET 11
3002750-RD-1112	ROAD ALIGNMENT PLAN SHEET 12
3002750-RD-1113	ROAD ALIGNMENT PLAN SHEET 13
3002750-RD-1114	ROAD ALIGNMENT PLAN SHEET 14
3002750-RD-1115	ROAD ALIGNMENT PLAN SHEET 15
3002750-RD-1116	ROAD ALIGNMENT PLAN SHEET 16
3002750-RD-1119	ROAD ALIGNMENT PLAN SHEET 17
LONGITUDINAL SECTIONS	
3002750-LS-1200	LONGITUDINAL SECTIONS COVER SHEET
3002750-LS-1201	LONGITUDINAL SECTIONS MC00 WESTBOUND SHEET 1
3002750-LS-1202	LONGITUDINAL SECTIONS MC00 WESTBOUND SHEET 2
3002750-LS-1203	LONGITUDINAL SECTIONS MC00 WESTBOUND SHEET 3
3002750-LS-1204	LONGITUDINAL SECTIONS MC00 WESTBOUND SHEET 4
3002750-LS-1205	LONGITUDINAL SECTIONS MC00 WESTBOUND SHEET 5
3002750-LS-1206	LONGITUDINAL SECTIONS MC00 WESTBOUND SHEET 6
3002750-LS-1207	LONGITUDINAL SECTIONS MC00 WESTBOUND SHEET 7
3002750-LS-1208	LONGITUDINAL SECTIONS MC00 WESTBOUND SHEET 8
3002750-LS-1209	LONGITUDINAL SECTIONS MC00 WESTBOUND SHEET 9
3002750-LS-1210	LONGITUDINAL SECTIONS MC00 WESTBOUND SHEET 10
3002750-LS-1221	LONGITUDINAL SECTIONS MC10 EASTBOUND SHEET 1
3002750-LS-1222	LONGITUDINAL SECTIONS MC10 EASTBOUND SHEET 2
3002750-LS-1223	LONGITUDINAL SECTIONS MC10 EASTBOUND SHEET 3
3002750-LS-1224	LONGITUDINAL SECTIONS MC10 EASTBOUND SHEET 4
3002750-LS-1225	LONGITUDINAL SECTIONS MC10 EASTBOUND SHEET 5
3002750-LS-1226	LONGITUDINAL SECTIONS MC10 EASTBOUND SHEET 6
3002750-LS-1227	LONGITUDINAL SECTIONS MC10 EASTBOUND SHEET 7
3002750-LS-1228	LONGITUDINAL SECTIONS MC10 EASTBOUND SHEET 8
3002750-LS-1229	LONGITUDINAL SECTIONS MC10 EASTBOUND SHEET 9
3002750-LS-1230	LONGITUDINAL SECTIONS MC10 EASTBOUND SHEET 10
3002750-LS-1240	LONGITUDINAL SECTIONS MC30 EASTBOUND SHEET 1
3002750-LS-1241	LONGITUDINAL SECTIONS MC31 EASTBOUND SHEET 1
3002750-LS-1245	LONGITUDINAL SECTIONS MC40 EASTBOUND SHEET 1
3002750-LS-1250	LONGITUDINAL SECTIONS MC50 CEMETERY ACCESS SHEET 1
3002750-LS-1251	LONGITUDINAL SECTIONS MC50 CEMETERY ACCESS SHEET 2
3002750-LS-1260	LONGITUDINAL SECTIONS MP20 SHARED USER PATH SHEET 1
3002750-LS-1261	LONGITUDINAL SECTIONS MP20 SHARED USER PATH SHEET 2
3002750-LS-1262	LONGITUDINAL SECTIONS MP20 SHARED USER PATH SHEET 3
3002750-LS-1263	LONGITUDINAL SECTIONS MP20 SHARED USER PATH SHEET 4
3002750-LS-1264	LONGITUDINAL SECTIONS MP20 SHARED USER PATH SHEET 5
3002750-LS-1266	LONGITUDINAL SECTIONS MP21 SHARED USER PATH SHEET 1
3002750-LS-1267	LONGITUDINAL SECTIONS MP21 SHARED USER PATH SHEET 2
3002750-LS-1268	LONGITUDINAL SECTIONS MP21 SHARED USER PATH SHEET 3
3002750-LS-1269	LONGITUDINAL SECTIONS MP21 SHARED USER PATH SHEET 4

DRAWING INDEX

DRAWING NUMBER	DRAWING TITLE
CROSS SECTIONS	
3002750-XS-1300	CROSS SECTIONS COVER SHEET
3002750-XS-1301	CROSS SECTION MC10 SHEET 1
3002750-XS-1302	CROSS SECTION MC10 SHEET 2
3002750-XS-1303	CROSS SECTION MC10 SHEET 3
3002750-XS-1304	CROSS SECTION MC10 SHEET 4
3002750-XS-1305	CROSS SECTION MC10 SHEET 5
3002750-XS-1306	CROSS SECTION MC10 SHEET 6
3002750-XS-1307	CROSS SECTION MC10 SHEET 7
3002750-XS-1308	CROSS SECTION MC10 SHEET 8
3002750-XS-1309	CROSS SECTION MC10 SHEET 9
3002750-XS-1310	CROSS SECTION MC10 SHEET 10
3002750-XS-1311	CROSS SECTION MC10 SHEET 11
3002750-XS-1312	CROSS SECTION MC10 SHEET 12
3002750-XS-1313	CROSS SECTION MC10 SHEET 13
3002750-XS-1314	CROSS SECTION MC10 SHEET 14
3002750-XS-1315	CROSS SECTION MC10 SHEET 15
3002750-XS-1316	CROSS SECTION MC10 SHEET 16
3002750-XS-1317	CROSS SECTION MC10 SHEET 17
3002750-XS-1318	CROSS SECTION MC10 SHEET 18
3002750-XS-1319	CROSS SECTION MC10 SHEET 19
3002750-XS-1320	CROSS SECTION MC10 SHEET 20
3002750-XS-1321	CROSS SECTION MC10 SHEET 21
3002750-XS-1322	CROSS SECTION MC10 SHEET 22
3002750-XS-1323	CROSS SECTION MC10 SHEET 23
3002750-XS-1324	CROSS SECTION MC10 SHEET 24
3002750-XS-1325	CROSS SECTION MC10 SHEET 25
3002750-XS-1326	CROSS SECTION MC10 SHEET 26
3002750-XS-1327	CROSS SECTION MC10 SHEET 27
3002750-XS-1328	CROSS SECTION MC10 SHEET 28
3002750-XS-1329	CROSS SECTION MC10 SHEET 29
3002750-XS-1330	CROSS SECTION MC10 SHEET 30
3002750-XS-1331	CROSS SECTION MC10 SHEET 31
3002750-XS-1332	CROSS SECTION MC10 SHEET 32
3002750-XS-1333	CROSS SECTION MC10 SHEET 33
3002750-XS-1334	CROSS SECTION MC10 SHEET 34
3002750-XS-1335	CROSS SECTION MC10 SHEET 35
3002750-XS-1336	CROSS SECTION MC10 SHEET 36
3002750-XS-1337	CROSS SECTION MC10 SHEET 37
3002750-XS-1338	CROSS SECTION MC10 SHEET 38
3002750-XS-1339	CROSS SECTION MC10 SHEET 39
3002750-XS-1340	CROSS SECTION MC10 SHEET 40
3002750-XS-1341	CROSS SECTION MC10 SHEET 41
3002750-XS-1342	CROSS SECTION MC10 SHEET 42
3002750-XS-1343	CROSS SECTION MC10 SHEET 43
3002750-XS-1344	CROSS SECTION MC10 SHEET 44
3002750-XS-1345	CROSS SECTION MC10 SHEET 45
3002750-XS-1346	CROSS SECTION MC10 SHEET 46
3002750-XS-1347	CROSS SECTION MC10 SHEET 47
3002750-XS-1348	CROSS SECTION MC10 SHEET 48
3002750-XS-1349	CROSS SECTION MC10 SHEET 49
3002750-XS-1350	CROSS SECTION MC10 SHEET 50

150 mm ON ORIGINAL
A1
0 10 20 30 40 50 60 70 80 90 100 110 120 130 140 150

DRAWING FILE LOCATION / NAME V:\Vault\Projects\3002750\CAD\DWG\01_GE_General\3002750-GE-0010.dwg		PLOT DATE 12 Nov 2020	TIME 14:03:50
EXTERNAL REFERENCE FILES	REV	DATE	AMENDMENT / REVISION DESCRIPTION
	A	19.06.2020	PRELIMINARY SKETCH PLAN
	B	08.10.2020	PRELIMINARY SKETCH PLAN
	C	13.11.2020	PRELIMINARY SKETCH PLAN SUBMISSION
	WVR No.	APPROVAL	TITLE
	0007	DK	DRAFTER <i>R. GOOSEN</i>
	0014	DK	DRAFTING CHECK <i>K. CURLEY</i>
	0015	DK	DESIGNER <i>B. LEJANO</i>
			DESIGN CHECK <i>T. MEADOWS</i>
			PROJECT MANAGER <i>S. RAVEN</i>
			PROJECT DIRECTOR <i>D. KEEP</i>

DESIGNER	 SMEC Member of the Surlana Jurong Group SMEC AUSTRALIA PTY LTD © ABN 47 065 475 149 SUITE 2, LEVEL 1, 243 NORTHBOURNE AVENUE LYNEHAM ACT 2602 AUSTRALIA SMEC PROJECT No 3002750
CLIENT	 ACT Government Transport Canberra & City Services

PRELIMINARY		PROJECT TITLE WILLIAM HOVELL DRIVE DUPLICATION
INDEX SHEET 1		SCALE AS SHOWN
PHASE PSP	PROJECT / DRAWING No. 3002750-GE-0010	REVISION C

DRAWING INDEX

DRAWING NUMBER	DRAWING TITLE
3002750-XS-1351	CROSS SECTION MC10 SHEET 51
3002750-XS-1352	CROSS SECTION MC10 SHEET 52
3002750-XS-1353	CROSS SECTION MC10 SHEET 53
3002750-XS-1354	CROSS SECTION MC10 SHEET 54
3002750-XS-1355	CROSS SECTION MC10 SHEET 55
3002750-XS-1356	CROSS SECTION MC10 SHEET 56
3002750-XS-1357	CROSS SECTION MC10 SHEET 57
3002750-XS-1358	CROSS SECTION MC10 SHEET 58
3002750-XS-1359	CROSS SECTION MC10 SHEET 59
3002750-XS-1360	CROSS SECTION MC10 SHEET 60
3002750-XS-1361	CROSS SECTION MC10 SHEET 61
3002750-XS-1362	CROSS SECTION MC10 SHEET 62
3002750-XS-1363	CROSS SECTION MC10 SHEET 63
3002750-XS-1364	CROSS SECTION MC10 SHEET 64
3002750-XS-1371	CROSS SECTION MC31 SHEET 1
3002750-XS-1372	CROSS SECTION MC31 SHEET 2
3002750-XS-1373	CROSS SECTION MC31 SHEET 3
STORMWATER DRAINAGE	
3002750-DD-1400	DRAINAGE COVER SHEET
3002750-DD-1401	DRAINAGE NOTES
3002750-DD-1402	DRAINAGE LEGEND
3002750-DD-1410	DRAINAGE SHEET 1
3002750-DD-1411	DRAINAGE SHEET 2
3002750-DD-1412	DRAINAGE SHEET 3
3002750-DD-1413	DRAINAGE SHEET 4
3002750-DD-1414	DRAINAGE SHEET 5
3002750-DD-1415	DRAINAGE SHEET 6
3002750-DD-1416	DRAINAGE SHEET 7
3002750-DD-1417	DRAINAGE SHEET 8
3002750-DD-1418	DRAINAGE SHEET 9
3002750-DD-1419	DRAINAGE SHEET 10
3002750-DD-1420	DRAINAGE SHEET 11
3002750-DD-1421	DRAINAGE SHEET 12
3002750-DD-1422	DRAINAGE SHEET 13
3002750-DD-1423	DRAINAGE SHEET 14
3002750-DD-1424	DRAINAGE SHEET 15
3002750-DD-1425	DRAINAGE SHEET 16
3002750-DD-1429	DRAINAGE SHEET 17
3002750-DD-1441	DRAINAGE DETAILS SHEET 1
3002750-DD-1442	DRAINAGE DETAILS SHEET 2
3002750-DD-1443	DRAINAGE DETAILS SHEET 3
3002750-DD-1444	DRAINAGE DETAILS SHEET 4
3002750-DD-1445	DRAINAGE DETAILS SHEET 5

DRAWING INDEX



DRAWING NUMBER	DRAWING TITLE
SEWER AND WATER	
3002750-WS-1500	SEWER AND WATER COVER SHEET
3002750-WS-1501	SEWER AND WATER NOTES AND LEGEND
3002750-WS-1510	SEWER AND WATER SHEET 1
3002750-WS-1511	SEWER AND WATER SHEET 2
3002750-WS-1512	SEWER AND WATER SHEET 3
3002750-WS-1513	SEWER AND WATER SHEET 4
3002750-WS-1514	SEWER AND WATER SHEET 5
3002750-WS-1515	SEWER AND WATER SHEET 6
3002750-WS-1516	SEWER AND WATER SHEET 7
3002750-WS-1517	SEWER AND WATER SHEET 8
3002750-WS-1518	SEWER AND WATER SHEET 9
3002750-WS-1519	SEWER AND WATER SHEET 10
3002750-WS-1520	SEWER AND WATER SHEET 11
3002750-WS-1521	SEWER AND WATER SHEET 12
3002750-WS-1522	SEWER AND WATER SHEET 13
3002750-WS-1523	SEWER AND WATER SHEET 14
3002750-WS-1524	SEWER AND WATER SHEET 15
3002750-WS-1525	SEWER AND WATER SHEET 16
3002750-WS-1529	SEWER AND WATER SHEET 17
UTILITIES	
3002750-UT-1600	UTILITIES COVER SHEET
3002750-UT-1601	UTILITIES NOTES AND LEGEND
3002750-UT-1610	UTILITIES SHEET 1
3002750-UT-1611	UTILITIES SHEET 2
3002750-UT-1612	UTILITIES SHEET 3
3002750-UT-1613	UTILITIES SHEET 4
3002750-UT-1614	UTILITIES SHEET 5
3002750-UT-1615	UTILITIES SHEET 6
3002750-UT-1616	UTILITIES SHEET 7
3002750-UT-1617	UTILITIES SHEET 8
3002750-UT-1618	UTILITIES SHEET 9
3002750-UT-1619	UTILITIES SHEET 10
3002750-UT-1620	UTILITIES SHEET 11
3002750-UT-1621	UTILITIES SHEET 12
3002750-UT-1622	UTILITIES SHEET 13
3002750-UT-1623	UTILITIES SHEET 14
3002750-UT-1624	UTILITIES SHEET 15
3002750-UT-1625	UTILITIES SHEET 16
3002750-UT-1629	UTILITIES SHEET 17

DRAWING INDEX

DRAWING NUMBER	DRAWING TITLE
PAVEMENT	
3002750-PV-1700	PAVEMENT COVER SHEET
3002750-PV-1701	PAVEMENT NOTES AND LEGEND
3002750-PV-1710	PAVEMENT PLAN SHEET 1
3002750-PV-1711	PAVEMENT PLAN SHEET 2
3002750-PV-1712	PAVEMENT PLAN SHEET 3
3002750-PV-1713	PAVEMENT PLAN SHEET 4
3002750-PV-1714	PAVEMENT PLAN SHEET 5
3002750-PV-1715	PAVEMENT PLAN SHEET 6
3002750-PV-1716	PAVEMENT PLAN SHEET 7
3002750-PV-1717	PAVEMENT PLAN SHEET 8
3002750-PV-1718	PAVEMENT PLAN SHEET 9
3002750-PV-1719	PAVEMENT PLAN SHEET 10
3002750-PV-1720	PAVEMENT PLAN SHEET 11
3002750-PV-1721	PAVEMENT PLAN SHEET 12
3002750-PV-1722	PAVEMENT PLAN SHEET 13
3002750-PV-1723	PAVEMENT PLAN SHEET 14
3002750-PV-1724	PAVEMENT PLAN SHEET 15
3002750-PV-1725	PAVEMENT PLAN SHEET 16
3002750-PV-1729	PAVEMENT PLAN SHEET 17
3002750-PV-1731	PAVEMENT DETAILS SHEET 1
3002750-PV-1732	PAVEMENT DETAILS SHEET 2
3002750-PV-1733	PAVEMENT DETAILS SHEET 3
3002750-PV-1734	PAVEMENT DETAILS SHEET 4
TRAFFIC CONTROL DEVICES	
3002750-TCD-1800	TRAFFIC CONTROL DEVICES SIGNS & LINEMARKING KEY PLAN & DRAWING INDEX
3002750-TCD-1801	TRAFFIC CONTROL DEVICES SIGNS & LINEMARKING GENERAL NOTES & LEGEND
3002750-TCD-1811	TRAFFIC CONTROL DEVICES DEMOLITION PLAN SHEET 1
3002750-TCD-1812	TRAFFIC CONTROL DEVICES DEMOLITION PLAN SHEET 2
3002750-TCD-1813	TRAFFIC CONTROL DEVICES DEMOLITION PLAN SHEET 3
3002750-TCD-1814	TRAFFIC CONTROL DEVICES DEMOLITION PLAN SHEET 4
3002750-TCD-1815	TRAFFIC CONTROL DEVICES DEMOLITION PLAN SHEET 5
3002750-TCD-1816	TRAFFIC CONTROL DEVICES DEMOLITION PLAN SHEET 6
3002750-TCD-1817	TRAFFIC CONTROL DEVICES DEMOLITION PLAN SHEET 7
3002750-TCD-1818	TRAFFIC CONTROL DEVICES DEMOLITION PLAN SHEET 8
3002750-TCD-1819	TRAFFIC CONTROL DEVICES DEMOLITION PLAN SHEET 9
3002750-TCD-1820	TRAFFIC CONTROL DEVICES DEMOLITION PLAN SHEET 10
3002750-TCD-1821	TRAFFIC CONTROL DEVICES DEMOLITION PLAN SHEET 11
3002750-TCD-1822	TRAFFIC CONTROL DEVICES DEMOLITION PLAN SHEET 12
3002750-TCD-1823	TRAFFIC CONTROL DEVICES DEMOLITION PLAN SHEET 13

150 mm ON ORIGINAL
A1
0 10 20 30 40 50 60 70 80 90 100 110 120 130 140 150

DRAWING FILE LOCATION / NAME V:\Vault\Projects\3002750\CAD\DWG\01_GE_General\3002750-GE-0011.dwg		PLOT DATE 12 Nov 2020		TIME 14:04:17	
EXTERNAL REFERENCE FILES	REV	DATE	AMENDMENT / REVISION DESCRIPTION	WVR No.	APPROVAL
	A	19.06.2020	PRELIMINARY SKETCH PLAN	0007	DK
	B	08.10.2020	PRELIMINARY SKETCH PLAN	0014	DK
	C	13.11.2020	PRELIMINARY SKETCH PLAN SUBMISSION	0015	DK

SCALES AT A1 SIZE DRAWING	DESIGNER	CLIENT
	 Member of the Surlana Jurong Group SMEC AUSTRALIA PTY LTD © ABN 47 065 475 149 SUITE 2, LEVEL 1, 243 NORTHBOURNE AVENUE LYNEHAM ACT 2602 AUSTRALIA SMEC PROJECT No 3002750	 Transport Canberra & City Services

PROJECT TITLE	WILLIAM HOVELL DRIVE DUPLICATION
INDEX SHEET 2	
SCALE	AS SHOWN
PHASE	PSP
PROJECT / DRAWING No.	3002750-GE-0011
REVISION	C

PRELIMINARY

DRAWING INDEX

DRAWING NUMBER	DRAWING TITLE
3002750-TCD-1824	TRAFFIC CONTROL DEVICES DEMOLITION PLAN SHEET 14
3002750-TCD-1825	TRAFFIC CONTROL DEVICES DEMOLITION PLAN SHEET 15
3002750-TCD-1826	TRAFFIC CONTROL DEVICES DEMOLITION PLAN SHEET 16
3002750-TCD-1827	TRAFFIC CONTROL DEVICES DEMOLITION PLAN SHEET 17
3002750-TCD-1828	TRAFFIC CONTROL DEVICES SIGNS DEMOLITION SCHEDULE
3002750-TCD-1831	TRAFFIC CONTROL DEVICES SIGNS & LINEMARKING SHEET 1
3002750-TCD-1832	TRAFFIC CONTROL DEVICES SIGNS & LINEMARKING SHEET 2
3002750-TCD-1833	TRAFFIC CONTROL DEVICES SIGNS & LINEMARKING SHEET 3
3002750-TCD-1834	TRAFFIC CONTROL DEVICES SIGNS & LINEMARKING SHEET 4
3002750-TCD-1835	TRAFFIC CONTROL DEVICES SIGNS & LINEMARKING SHEET 5
3002750-TCD-1836	TRAFFIC CONTROL DEVICES SIGNS & LINEMARKING SHEET 6
3002750-TCD-1837	TRAFFIC CONTROL DEVICES SIGNS & LINEMARKING SHEET 7
3002750-TCD-1838	TRAFFIC CONTROL DEVICES SIGNS & LINEMARKING SHEET 8
3002750-TCD-1839	TRAFFIC CONTROL DEVICES SIGNS & LINEMARKING SHEET 9
3002750-TCD-1840	TRAFFIC CONTROL DEVICES SIGNS & LINEMARKING SHEET 10
3002750-TCD-1841	TRAFFIC CONTROL DEVICES SIGNS & LINEMARKING SHEET 11
3002750-TCD-1842	TRAFFIC CONTROL DEVICES SIGNS & LINEMARKING SHEET 12
3002750-TCD-1843	TRAFFIC CONTROL DEVICES SIGNS & LINEMARKING SHEET 13
3002750-TCD-1844	TRAFFIC CONTROL DEVICES SIGNS & LINEMARKING SHEET 14
3002750-TCD-1845	TRAFFIC CONTROL DEVICES SIGNS & LINEMARKING SHEET 15
3002750-TCD-1846	TRAFFIC CONTROL DEVICES SIGNS & LINEMARKING SHEET 16
3002750-TCD-1847	TRAFFIC CONTROL DEVICES SIGNS & LINEMARKING SHEET 17
3002750-TCD-1848	TRAFFIC CONTROL DEVICES NEW SIGNS SCHEDULE
3002750-TCS-1851	TRAFFIC CONTROL DEVICES DRAKE BROCKMAN / WILLIAM HOVELL CABLE & LOOP LAYOUT
3002750-TCS-1852	TRAFFIC CONTROL DEVICES DRAKE BROCKMAN / WILLIAM HOVELL HARDWARE LAYOUT
STRUCTURAL	
3002750-DSC-1901	ACCESS EQUESTRIAN PATH UNDERPASS 1156 COVER SHEET KEYPLAN
3002750-DSC-1910	ACCESS EQUESTRIAN PATH UNDERPASS 1156 GENERAL ARRANGEMENT
3002750-RW-1960	RETAINING WALLS COVER SHEET AND LOCALITY PLAN
3002750-RW-1961	RETAINING WALLS GENERAL NOTES SHEET 1
3002750-RW-1962	RETAINING WALLS GENERAL NOTES SHEET 2
3002750-RW-1965	RETAINING WALL MW1A PLAN AND LONG SECTION
3002750-RW-1967	RETAINING WALL MW1B PLAN AND LONG SECTION
3002750-RW-1968	RETAINING WALL MW1C PLAN AND LONG SECTION
3002750-RW-1969	RETAINING WALL MW1A, MW1B & MW1C TYPICAL DETAILS
3002750-RW-1975	RETAINING WALL MW1D PLAN AND LONG SECTION - SHEET 1
3002750-RW-1976	RETAINING WALL MW1D PLAN AND LONG SECTION - SHEET 2
3002750-RW-1977	RETAINING WALL MW1D TYPICAL DETAILS - SHEET 1
3002750-RW-1978	RETAINING WALL MW1D TYPICAL DETAILS - SHEET 2
3002750-RW-1981	RETAINING WALL MW1F PLAN AND LONG SECTION - SHEET 1
3002750-RW-1982	RETAINING WALL MW1F PLAN AND LONG SECTION - SHEET 2
3002750-RW-1984	RETAINING WALL MW1G PLAN AND LONG SECTION - SHEET 1
3002750-RW-1985	RETAINING WALL MW1G PLAN AND LONG SECTION - SHEET 2
3002750-RW-1986	RETAINING WALL MW1F & MW1G TYPICAL DETAILS - SHEET 1
3002750-RW-1987	RETAINING WALL MW1F & MW1G TYPICAL DETAILS - SHEET 2
3002750-RW-1988	RETAINING WALL MW1F & MW1G TYPICAL DETAILS - SHEET 3
3002750-RW-1990	RETAINING WALL MW1H PLAN AND LONG SECTION - SHEET 1
3002750-RW-1991	RETAINING WALL MW1H PLAN AND LONG SECTION - SHEET 2
3002750-RW-1992	RETAINING WALL MW1H TYPICAL DETAILS - SHEET 1
3002750-RW-1993	RETAINING WALL MW1H TYPICAL DETAILS - SHEET 2

DRAWING INDEX

DRAWING NUMBER	DRAWING TITLE
CONSTRUCTION STAGING	
3002750-CS-2200	CONSTRUCTION STAGING PLAN COVER SHEET
3002750-CS-2202	CONSTRUCTION STAGING PLAN NOTES AND LEGEND
3002750-CS-2210	CONSTRUCTION STAGING PLAN PHASE 1 SHEET 1
3002750-CS-2211	CONSTRUCTION STAGING PLAN PHASE 1 SHEET 2
3002750-CS-2212	CONSTRUCTION STAGING PLAN PHASE 1 SHEET 3
3002750-CS-2213	CONSTRUCTION STAGING PLAN PHASE 1 SHEET 4
3002750-CS-2214	CONSTRUCTION STAGING PLAN PHASE 1 SHEET 5
3002750-CS-2230	CONSTRUCTION STAGING PLAN PHASE 2 SHEET 1
3002750-CS-2231	CONSTRUCTION STAGING PLAN PHASE 2 SHEET 2
3002750-CS-2232	CONSTRUCTION STAGING PLAN PHASE 2 SHEET 3
3002750-CS-2233	CONSTRUCTION STAGING PLAN PHASE 2 SHEET 4

SUBCONSULTANTS

DRAWING NUMBER	DRAWING TITLE
STREET LIGHTING	
120114-E100	STREETLIGHTING SHEET 1 ELECTRICAL SERVICES
120114-E101	STREETLIGHTING SHEET 2 ELECTRICAL SERVICES
120114-E102	STREETLIGHTING SHEET 3 ELECTRICAL SERVICES
120114-E103	STREETLIGHTING SHEET 4 ELECTRICAL SERVICES
120114-E104	STREETLIGHTING SHEET 5 ELECTRICAL SERVICES
120114-E105	STREETLIGHTING SHEET 6 ELECTRICAL SERVICES
120114-E106	STREETLIGHTING SHEET 7 ELECTRICAL SERVICES
120114-E107	STREETLIGHTING SHEET 8 ELECTRICAL SERVICES
120114-E108	STREETLIGHTING SHEET 9 ELECTRICAL SERVICES
120114-E109	STREETLIGHTING SHEET 10 ELECTRICAL SERVICES
120114-E110	STREETLIGHTING SHEET 11 ELECTRICAL SERVICES
120114-E111	STREETLIGHTING SHEET 12 ELECTRICAL SERVICES
120114-E112	STREETLIGHTING SHEET 13 ELECTRICAL SERVICES
120114-E113	STREETLIGHTING SHEET 14 ELECTRICAL SERVICES
120114-E114	STREETLIGHTING SHEET 15 ELECTRICAL SERVICES
120114-E115	STREETLIGHTING SHEET 16 ELECTRICAL SERVICES
120114-E116	STREETLIGHTING SHEET 17 ELECTRICAL SERVICES
120114-E117	STREETLIGHTING SHEET 18 ELECTRICAL SERVICES
LANDSCAPING	
1847-LCO-00	LANDSCAPE COVER PAGE
1847-LCO-01	LANDSCAPE NOTES SCHEDULES
1847-TR01	TREE REMOVAL PLAN SHEET 1 OF 17
1847-TR02	TREE REMOVAL PLAN SHEET 2 OF 17
1847-TR03	TREE REMOVAL PLAN SHEET 3 OF 17
1847-TR04	TREE REMOVAL PLAN SHEET 4 OF 17
1847-TR05	TREE REMOVAL PLAN SHEET 5 OF 17
1847-TR06	TREE REMOVAL PLAN SHEET 6 OF 17
1847-TR07	TREE REMOVAL PLAN SHEET 7 OF 17
1847-TR08	TREE REMOVAL PLAN SHEET 8 OF 17
1847-TR09	TREE REMOVAL PLAN SHEET 9 OF 17
1847-TR10	TREE REMOVAL PLAN SHEET 10 OF 17
1847-TR11	TREE REMOVAL PLAN SHEET 11 OF 17
1847-TR12	TREE REMOVAL PLAN SHEET 12 OF 17
1847-TR13	TREE REMOVAL PLAN SHEET 13 OF 17
1847-TR14	TREE REMOVAL PLAN SHEET 14 OF 17
1847-TR15	TREE REMOVAL PLAN SHEET 15 OF 17
1847-TR16	TREE REMOVAL PLAN SHEET 16 OF 17
1847-TR17	TREE REMOVAL PLAN SHEET 17 OF 17
1847-LP01	LANDSCAPE PLAN SHEET 1 OF 17
1847-LP02	LANDSCAPE PLAN SHEET 2 OF 17
1847-LP03	LANDSCAPE PLAN SHEET 3 OF 17
1847-LP04	LANDSCAPE PLAN SHEET 4 OF 17
1847-LP05	LANDSCAPE PLAN SHEET 5 OF 17
1847-LP06	LANDSCAPE PLAN SHEET 6 OF 17
1847-LP07	LANDSCAPE PLAN SHEET 7 OF 17
1847-LP08	LANDSCAPE PLAN SHEET 8 OF 17
1847-LP09	LANDSCAPE PLAN SHEET 9 OF 17
1847-LP10	LANDSCAPE PLAN SHEET 10 OF 17
1847-LP11	LANDSCAPE PLAN SHEET 11 OF 17
1847-LP12	LANDSCAPE PLAN SHEET 12 OF 17
1847-LP13	LANDSCAPE PLAN SHEET 13 OF 17
1847-LP14	LANDSCAPE PLAN SHEET 14 OF 17
1847-LP15	LANDSCAPE PLAN SHEET 15 OF 17
1847-LP16	LANDSCAPE PLAN SHEET 16 OF 17
1847-LP17	LANDSCAPE PLAN SHEET 17 OF 17
1847-LS01	LANDSCAPE SECTIONS
1847-LS02	LANDSCAPE SECTIONS
1847-LS03	LANDSCAPE SECTIONS
1847-LSD01	LANDSCAPE DETAILS

150 mm ON ORIGINAL
A1

DRAWING FILE LOCATION / NAME V:\Vault\Projects\3002750\CAD\DWG\01_GE_General\3002750-GE-0012.dwg		PLOT DATE 12 Nov 2020		TIME 14:04:44	
EXTERNAL REFERENCE FILES	REV	DATE	AMENDMENT / REVISION DESCRIPTION	WVR No.	APPROVAL
	A	19.06.2020	PRELIMINARY SKETCH PLAN	0007	DK
	B	08.10.2020	PRELIMINARY SKETCH PLAN	0014	DK
	C	13.11.2020	PRELIMINARY SKETCH PLAN SUBMISSION	0015	DK

TITLE	NAME
DRAFTER	R. GOOSEN
DRAFTING CHECK	K. CURLEY
DESIGNER	B. LEJANO
DESIGN CHECK	T. MEADOWS
PROJECT MANAGER	S. RAVEN
PROJECT DIRECTOR	D. KEEP

DESIGNER



SMC
Member of the Surlana Jurong Group
SMC AUSTRALIA PTY LTD
© ABN 47 065 475 149
SUITE 2, LEVEL 1, 243 NORTHBOURNE AVENUE
LYNEHAM ACT 2602 AUSTRALIA
SMC PROJECT No 3002750

CLIENT



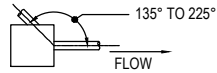
ACT
Government
Transport Canberra & City Services

PROJECT TITLE WILLIAM HOVELL DRIVE DUPLICATION		INDEX SHEET 3	
SCALE AS SHOWN	PHASE PSP	PROJECT / DRAWING No. 3002750-GE-0012	REVISION C

PRELIMINARY

GENERAL:

- DIMENSIONS ARE IN MILLIMETRES UNLESS NOTED OTHERWISE.
- DIMENSIONS SHOWN FOR PIPES REFER TO THE NOMINAL PIPE DIAMETER IN MILLIMETRES
- DIMENSIONS SHOWN FOR BOX CULVERTS REFER TO THE BOX CULVERT'S NOMINAL INTERNAL HEIGHT x SPAN IN MILLIMETRES
- STATIONS AND REDUCED LEVELS ARE IN METRES.
- REDUCED LEVELS ARE RELATED TO THE AUSTRALIAN HEIGHT DATUM.
- THE CO-ORDINATE SYSTEM USED IN ALL DRAWINGS IS THE CANBERRA MAP GRID (STROMLO).
- ALL LOCATIONS, ORIENTATION AND LEVELS SHALL BE VERIFIED ON SITE BEFORE COMMENCING ANY WORK. DO NOT OBTAIN DIMENSIONS FROM SCALING. EXISTING SURFACE LEVELS ON THE DRAWINGS ARE INDICATIVE ONLY. REFER DISCREPANCIES TO THE PRINCIPAL AUTHORISED PERSON.
- THE DOCUMENTED DRAINAGE SYSTEM IS DETAILED ONLY FOR THE PERMANENT ROAD CONFIGURATION UNLESS NOTED OTHERWISE. CONSTRUCTION DRAINAGE SHALL BE THE CONTRACTOR'S RESPONSIBILITY.
- PIPES THROUGH PITS ARE TO BE ALIGNED WITH THE UPSTREAM PIPE CENTRELINE TO THE OUTLET PIPE CENTRELINE AT DOWNSTREAM PIT FACE AS SHOWN:



- ANY PERMITS FOR DIVERSION WORKS REQUIRED DURING CONSTRUCTION SHALL BE OBTAINED PRIOR TO CONSTRUCTION WORKS.
- EXISTING STORMWATER DRAINAGE PIPES, PITS AND MANHOLES WITHIN THE LIMIT OF WORKS SHALL BE REMOVED OR MODIFIED AS SPECIFIED. ANY EXPOSED EXISTING REINFORCEMENT TO BE PROTECTED IN ACCORDANCE WITH REQUIREMENTS FOR NEW CONSTRUCTION.

SERVICES:

- ALL EXISTING SERVICE LOCATIONS SHOWN ON DRAWINGS ARE INDICATIVE ONLY AND ARE TO BE VERIFIED BY THE CONTRACTOR PRIOR TO ANY CONSTRUCTION.
- THE CONTRACTOR SHALL BE RESPONSIBLE FOR THE PROTECTION OF EXISTING SERVICES DURING CONSTRUCTION.
- THE CONTRACTOR SHALL SET OUT THE WORKS PRIOR TO EXCAVATION. WHERE A CONFLICT OR INCONSISTENCY BECOMES APPARENT THE CONTRACTOR SHALL NOTIFY THE PRINCIPAL AUTHORISED PERSON IMMEDIATELY.
- ALL DISTURBED SURFACES FOR TEMPORARY WORKS ARE TO BE RE-INSTATED TO ORIGINAL CONDITION, UNLESS NOTED OTHERWISE.
- ALL SERVICES TRENCHES IN EXISTING PAVEMENT OR IN AREAS WITHIN 1m OF THE UNDERSIDE OF PAVEMENT FORMATION WHERE NEW PAVEMENT IS TO BE CONSTRUCTED SHALL BE BACKFILLED WITH DGS20 COMPACTED TO 95% MMDD.
- LOCATION AND LEVEL OF ALL SERVICES CROSSINGS OF PROPOSED WORKS MUST BE CHECKED FOR CONFLICT WITH EXISTING SERVICES. ANY CONFLICTS TO BE RESOLVED WITH THE PRINCIPAL AUTHORISED PERSON.
- WORK BENEATH OVERHEAD AND OVER UNDERGROUND POWERLINES TO BE UNDERTAKEN WITH RELEVANT AUTHORITY REQUIREMENTS AND IN ACCORDANCE WITH THE "WORKING IN THE VICINITY OF OVERHEAD AND UNDERGROUND ELECTRICAL LINES" CODE OF PRACTICE FROM WORKSAFE AUSTRALIA.

SAFETY BARRIERS AND KERBS

- NON-FRANGIBLE ROAD FURNITURE IS TO BE PLACED OUTSIDE THE CLEAR ZONE OR PROTECTED BY SAFETY BARRIER.
- STEEL WIRE ROPE SAFETY BARRIER SHALL BE SUITABLE FOR IMPACT FROM BOTH SIDES WHERE THE CLEAR MEDIAN WIDTH IS LESS THAN 12m.
- FOR STANDARD TYPE 'F' BARRIER AND 'SO' KERB SHAPES REFER RMS MODEL DRAWING R0300-01.
- FOR ALL OTHER STANDARD KERB SHAPES REFER TCCS STANDARD DRG No. DS3-01.
- FOR TYPE 'F' SS (SINGLE SIDED) BARRIER DETAILS REFER RMS MODEL DRAWING R0720-05.
- FOR TYPE 'F' SLOPED END TERMINAL REFER RMS MODEL DRAWING MD.R132.G04.B FOR PRE-CAST BARRIER REFER RMS MODEL DRAWING MD.R132.G06.A.1 FOR CAST IN-SITU INSTALLATIONS.
- FOR G4 GUARDRAIL MELT AND TT TERMINAL TYPES REFER RMS MODEL DRAWING MD.R132.G01.B AND MDR132.G03.A.2

PAVEMENT NOTES:

- PAVEMENT PROFILES ARE PROVIDED ON DRG 3002750-PV-1731.
- PAVEMENT INTERFACE JOINTS SHALL BE LOCATED OUTSIDE VEHICULAR WHEEL PATHS.
- THE NOMINATED THICKNESS OF A LAYER OF DENSE GRADED ASPHALT MUST BE WITHIN THE LIMITS SPECIFIED IN RMS SPECIFICATION R116. LAYER THICKNESS SHOULD EXCEED THE MAXIMUM NOMINAL STONE SIZE BY AT LEAST 3.0 TIMES, BUT NO MORE THAN 5 TIMES. NOMINAL LAYER THICKNESS TO BE IN ACCORDANCE WITH RMS SPECIFICATION R116

NOMINAL AGGREGATE SIZE (mm)	RECOMMENDED THICKNESS (mm)
7	20
10	30
14	45
20	75

- IF UNSUITABLE SUBGRADE MATERIALS IS ENCOUNTERED ONE OF THE FOLLOWING MEASURES ARE TO BE EMPLOYED, SUBJECT TO APPROVAL:

- DRAINAGE AND DRYING OF THE INSITU MATERIAL
- EXCAVATION AND REPLACEMENT OF SOFT MATERIAL WITH SELECT MATERIAL
- STABILISATION OF TOP 300mm SUBGRADE MATERIAL WITH QUICK LIME OR CEMENT
- PROVISION OF A WORKING PLATFORM OF CEMENT TREATED MATERIAL
- USE OF GEOTEXTILES
- ALL WORKS IN ACCORDANCE WITH RMS SPECIFICATION R44.

- THE AGGREGATE SPREAD RATE AND BINDER APPLICATION RATE FOR SPRAYED SEALS ARE SUBJECT TO APPROVAL BY PRINCIPAL AUTHORITY PERSON.
- QUICK DRY PRIME (QDP) TO BE CONSTRUCTED TO MANUFACTURERS SPECIFICATIONS
- PRIME, AMC00, AMC4 AND AMC7 TO BE CONSTRUCTED IN ACCORDANCE WITH RMS SPECIFICATION R106

FENCING

- WHERE PROPOSED FENCING OVERLAPS WITH EXISTING, THE EXISTING FENCE CAN BE RETAINED IF THE FENCE MEETS THE FOLLOWING CRITERIA:
 - PROVIDES CLEAR PHYSICAL BOUNDARY FOR PEOPLE.
 - PERFORMS INTENDED CATTLE PROOF FUNCTION.
- REMOVE ALL EXISTING FENCES WITHIN THE PERMANENT FENCE BOUNDARY UNLESS OTHERWISE STATED.
- CONSTRUCT GATES IN ACCORDANCE WITH STD DWG R0800-04.

EROSION AND SEDIMENT CONTROL

- ALL EROSION AND SEDIMENT CONTROLS ARE TO BE CONSTRUCTED ACCORDING TO THE BEST PRACTICE REQUIREMENTS OF "MANAGING URBAN STORMWATER: SOILS AND CONSTRUCTION - BLUE BOOK" LANDCOM 4TH ED MARCH 2004 AND VOLUME 2 - MAIN ROAD CONSTRUCTION
- EXAMPLE EROSION AND SEDIMENT CONTROL MEASURES FOR CONSTRUCTION ARE PROVIDED. THESE ARE PRINCIPLE EXAMPLES FOR REFERENCE AND REQUIRE FURTHER DETAIL FOR CONSTRUCTION ACTIVITIES.
- PROGRESSIVE EROSION AND SEDIMENT CONTROL PLANS (PESCP'S) FOR ALL STAGES OF THE PROJECT ARE TO BE PREPARED AND IMPLEMENTED PRIOR TO COMMENCEMENT OF CONSTRUCTION.
- THE PESCP'S SHOULD DETAIL CONTROLS SUCH AS SEDIMENT FENCES, DIVERSION DRAINS, DRAIN LINES, SAND BAGS AND GRAVEL BAGS.
- REDUCE THE AREA OF SOIL DISTURBANCE BY RETAINING VEGETATION, STAGING WORKS AND BY MINIMISING THE CONSTRUCTION FOOTPRINT.
- PROGRESSIVELY REVEGETATE OR STABILISE DISTURBED AREAS SUCH AS TEMPORARY TOPSOIL STOCKPILES, VERGES AND BATTERS.
- STOCKPILES ARE TO BE STABILISED IF LEFT FOR 2 WEEKS OR MORE.
- PRIOR TO ANY WORKS, INSTALL DIVERSION DRAINS, SEDIMENTATION PONDS AND OTHER SURFACE RUNOFF CONTROL MEASURES TO CONTROL RUNOFF ONTO, ACROSS AND FROM THE SITE; AND TO TRAP SEDIMENT.
- PROVIDE FOR RAINFALL EVENTS BY ENSURING THE FUNCTIONALITY AND CAPACITY OF EROSION AND SEDIMENT CONTROL, PROVIDING ADDITIONAL CONTROLS WHERE REQUIRED, STABILISING BARE GROUND AND TEMPORARY STOCKPILES AND AVOIDING GROUND DISTURBANCE.
- INSPECT AND MAINTAIN ALL EROSION AND SEDIMENT CONTROLS DAILY AND WITHIN 24 HOURS OF RAINFALL EVENTS.
- INTERCEPT OFFSITE SURFACE FLOW AND DIVERT OR ALLOW THROUGH CROSS DRAINAGE PIPES/CULVERTS WITHOUT MIXING WITH CONSTRUCTION RUNOFF.
- IN AREAS OF HIGH VELOCITY RUNOFF, REDUCE FLOW VELOCITIES USING APPROPRIATE MEASURES SUCH AS CHECK DAMS AND DIVERT TO STABLE LOCATIONS OR CONTROLS.
- ENSURE CONSTRUCTION RUNOFF DOES NOT DIRECTLY DISCHARGE FROM SITE. USE SEDIMENT CONTROLS TO FILTER RUNOFF BEFORE DISCHARGING.
- ALL OPEN DRAINAGE CHANNELS ARE TO BE LINED WITH MATERIAL SUCH AS GEO-FABRIC JUTE MESH OR SOIL STABILISING AGENT.
- CHECK DAMS ARE TO BE INSTALLED AT APPROPRIATE INTERVALS ALONG LINED DRAINAGE CHANNELS TO REDUCE EROSION POTENTIAL OF THE FLOW.
- ENSURE THAT THE SOIL AND WATER MANAGEMENT PLAN DESCRIBES THE MANAGEMENT OF TEMPORARY CONSTRUCTION PONDS, INCLUDING ACCEPTED WATER QUALITY PRACTICES AND STANDARDS SUCH AS FLOCCULATION AND SETTLING, TESTING FOR TSS, TURBIDITY, PH, OIL AND GREASE, DEWATERING AND DOCUMENTATION OF RESULTS.
- DURING ALL STAGES OF CONSTRUCTION. IN CATCHMENTS WHERE SEDIMENT PONDS ARE LOCATED, CONSTRUCTION RUNOFF IS TO BE DIVERTED TO SEDIMENT PONDS VIA DIVERSION DRAINS, TEMPORARY CATCH DRAINS, AND PERMANENT OR TEMPORARY DRAINAGE PIPES OR SIMILAR.
- LOCATION AND DESIGN OF SEDIMENT PONDS TO BE CONFIRMED ON SITE AND MODIFIED AS REQUIRED.

EARTHWORKS NOTES

- SOFT GROUND ENCOUNTERED IN ACCESS ROADS PLATFORMS SHALL BE STABILISED USING ROCKFILL/ EARTHFILL OR OTHER APPROVED TREATMENTS.
- TEMPORARY BATTER SLOPES SHALL NOT BE STEEPER THAN 1V:2H.
- IN ADDITION TO TEMPORARY SITE DRAINAGE THE CONTRACTOR SHALL BE RESPONSIBLE FOR DEWATERING IF REQUIRED DURING REMOVAL AND REPLACEMENT OF INSITU MATERIAL.

FOUNDATION AND EARTHWORKS NOTES

- PRIOR TO THE PLACEMENT OF ANY FILL ALL FOUNDATIONS FOR EARTHWORKS SHALL BE INSPECTED AND APPROVED BY THE SITE GEOTECHNICAL REPRESENTATIVE.

150 mm ON ORIGINAL
A1
0 10 20 30 40 50 60 70 80 90 100 110 120 130 140 150

DRAWING FILE LOCATION / NAME V:_Vault\Projects\3002750\CAD\DWG\01_GE_General\3002750-GE-0020.dwg		PLOT DATE 12 Nov 2020		TIME 14:05:10	
EXTERNAL REFERENCE FILES	REV	DATE	AMENDMENT / REVISION DESCRIPTION	WVR No.	APPROVAL
	A	19.06.2020	PRELIMINARY SKETCH PLAN	0007	DK
	B	08.10.2020	PRELIMINARY SKETCH PLAN	0014	DK
	C	13.11.2020	PRELIMINARY SKETCH PLAN SUBMISSION	0015	DK

TITLE	NAME
DRAFTER	R. GOOSEN
DRAFTING CHECK	K. CURLEY
DESIGNER	B. LEJANO
DESIGN CHECK	T. MEADOWS
PROJECT MANAGER	S. RAVEN
PROJECT DIRECTOR	D. KEEP

SCALES AT A1 SIZE DRAWING

DESIGNER

Member of the Surlana Jurong Group
SMEC AUSTRALIA PTY LTD
© ABN 47 065 475 149
SUITE 2, LEVEL 1, 243 NORTHBOURNE AVENUE
LYNEHAM ACT 2602 AUSTRALIA
SMEC PROJECT No 3002750

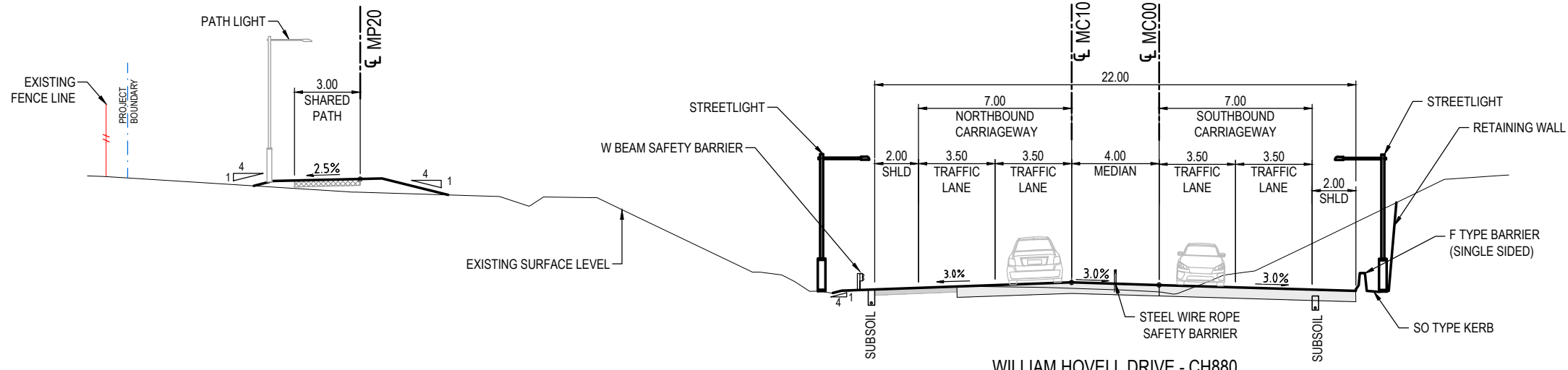
CLIENT

Transport Canberra & City Services

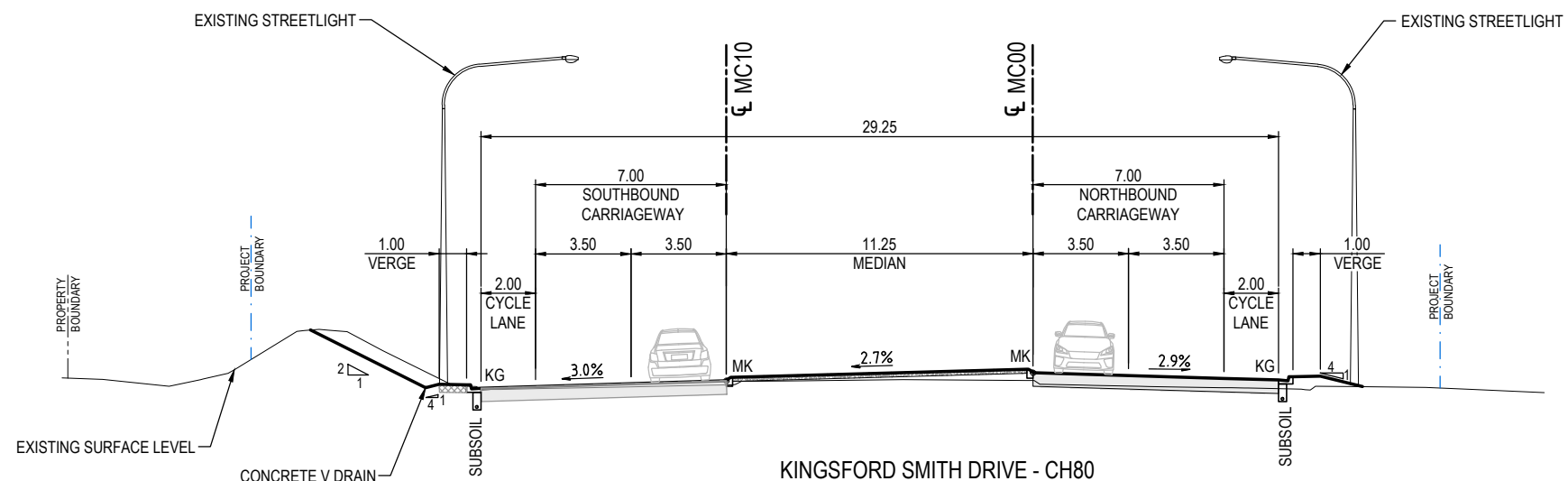
PROJECT TITLE WILLIAM HOVELL DRIVE DUPLICATION		REVISION C	
GENERAL NOTES SHEET 1		PROJECT / DRAWING No. 3002750-GE-0020	
SCALE AS SHOWN	PHASE PSP		

PRELIMINARY

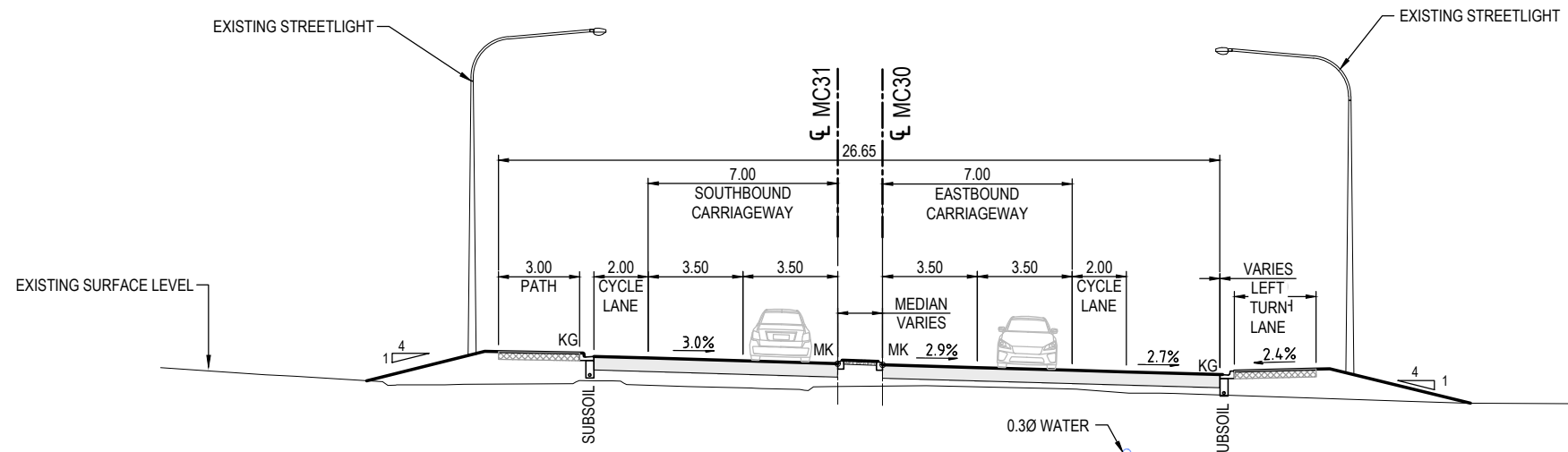
NOTE:
DIMENSIONS ARE IN METRES



WILLIAM HOVELL DRIVE - CH880
SECTION 3
SCALE 1: 125



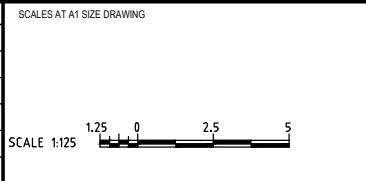
KINGSFORD SMITH DRIVE - CH80
SECTION 2
SCALE 1: 125



DRAKE-BROCKMAN DRIVE - CH50
SECTION 1
SCALE 1: 125

150 mm ON ORIGINAL

DRAWING FILE LOCATION / NAME V:\Vault\Projects\3002750\CAD\DWG\01_GE_General\3002750-GE-0031.dwg		PLOT DATE 13 Nov 2020		TIME 11:56:58	
REV	DATE	AMENDMENT / REVISION DESCRIPTION	WVR No.	APPROVAL	TITLE
A	19.06.2020	PRELIMINARY SKETCH PLAN	0007	DK	DRAFTER <i>R. GOOSEN</i>
B	08.10.2020	PRELIMINARY SKETCH PLAN	0014	DK	DRAFTING CHECK <i>K. CURLEY</i>
C	13.11.2020	PRELIMINARY SKETCH PLAN SUBMISSION	0015	DK	DESIGNER <i>B. LEJANO</i>
					DESIGN CHECK <i>T. MEADOWS</i>
					PROJECT MANAGER <i>S. RAVEN</i>
					PROJECT DIRECTOR <i>D. KEEP</i>



DESIGNER

SMEC
Member of the Surlana Jurong Group
SMEC AUSTRALIA PTY LTD
© ABN 47 065 475 149
SUITE 2, LEVEL 1, 243 NORTHBOURNE AVENUE
LYNEHAM ACT 2602 AUSTRALIA
SMEC PROJECT No 3002750

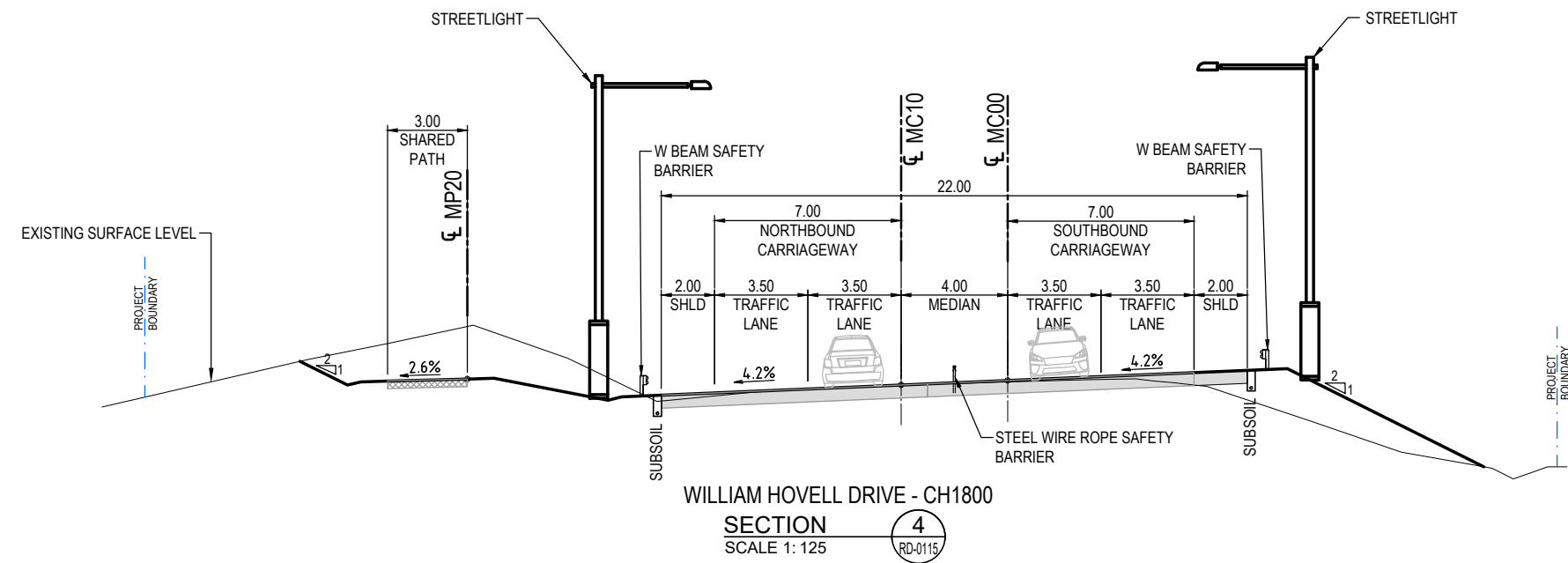
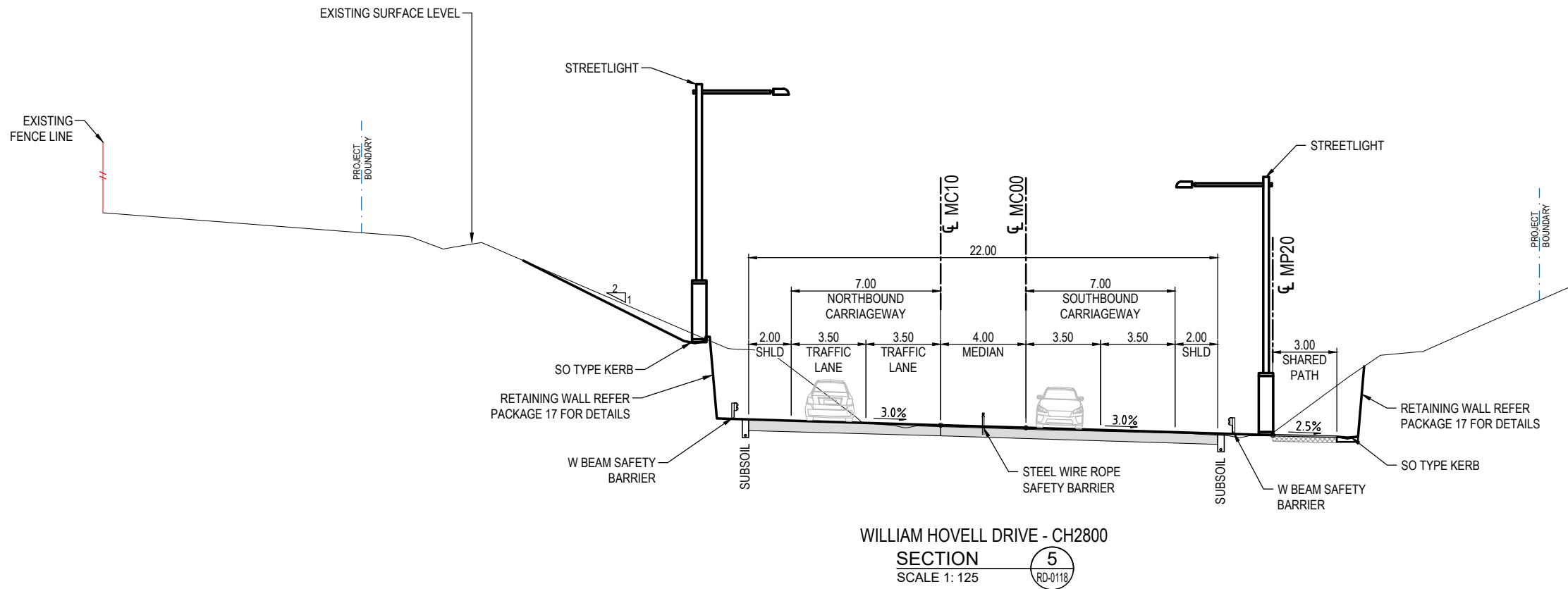
CLIENT

ACT
Government
Transport Canberra & City Services

PROJECT TITLE WILLIAM HOVELL DRIVE DUPLICATION		REVISION C	
TYPICAL SECTIONS SHEET 1		PROJECT / DRAWING No. 3002750-GE-0031	
SCALE AS SHOWN	PHASE PSP	PROJECT / DRAWING No. 3002750-GE-0031	REVISION C

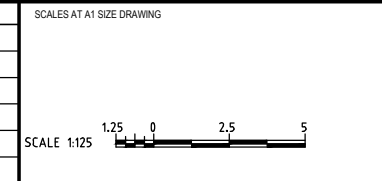
PRELIMINARY

NOTE:
DIMENSIONS ARE IN METRES



150 mm ON ORIGINAL
A1

DRAWING FILE LOCATION / NAME V:\Vault\Projects\3002750\CAD\DWG\01_GE_General\3002750-GE-0032.dwg		PLOT DATE 12 Nov 2020		TIME 14:06:04	
REV	DATE	AMENDMENT / REVISION DESCRIPTION	WVR No.	APPROVAL	TITLE
A	19.06.2020	PRELIMINARY SKETCH PLAN	0007	DK	DRAFTER <i>R. GOOSEN</i>
B	08.10.2020	PRELIMINARY SKETCH PLAN	0014	DK	DRAFTING CHECK <i>K. CURLEY</i>
C	13.11.2020	PRELIMINARY SKETCH PLAN SUBMISSION	0015	DK	DESIGNER <i>B. LEJANO</i>
					DESIGN CHECK <i>T. MEADOWS</i>
					PROJECT MANAGER <i>S. RAVEN</i>
					PROJECT DIRECTOR <i>D. KEEP</i>



DESIGNER

SMEC
Member of the Surlana Jurong Group
SMEC AUSTRALIA PTY LTD
© ABN 47 065 475 149
SUITE 2, LEVEL 1, 243 NORTHBOURNE AVENUE
LYNEHAM ACT 2602 AUSTRALIA
SMEC PROJECT No 3002750

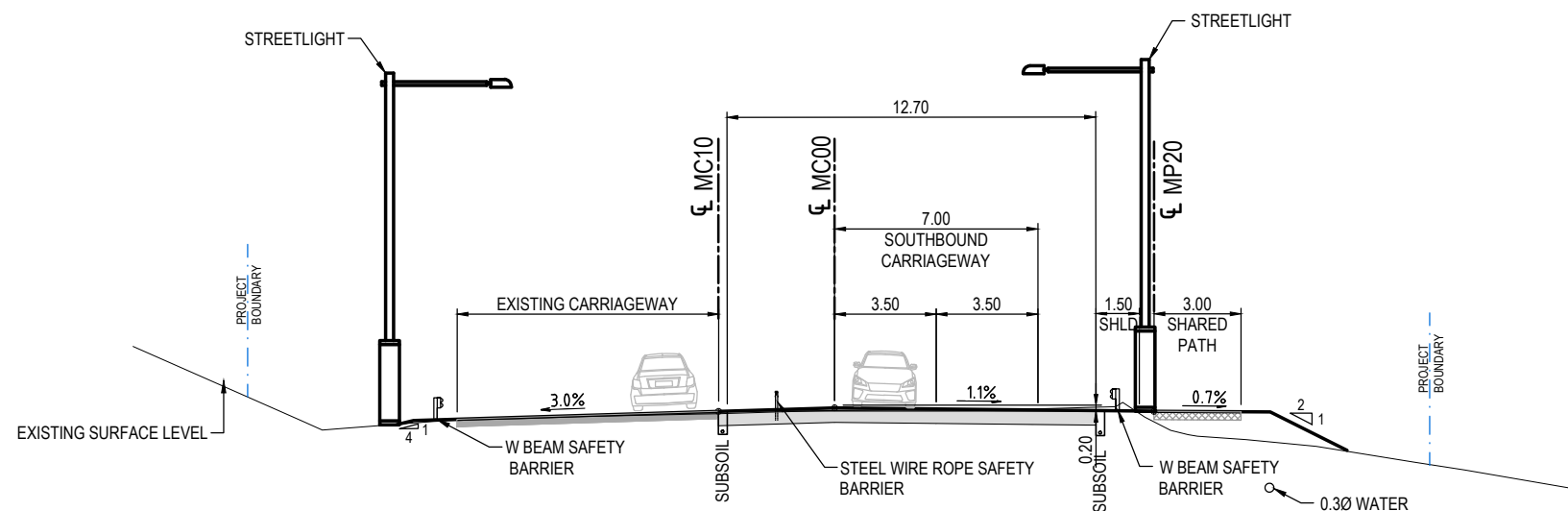
CLIENT

ACT
Government
Transport Canberra & City Services

PROJECT TITLE WILLIAM HOVELL DRIVE DUPLICATION		REVISION C	
TYPICAL SECTIONS SHEET 2		PROJECT / DRAWING No. 3002750-GE-0032	
SCALE AS SHOWN	PHASE PSP	PROJECT / DRAWING No. 3002750-GE-0032	REVISION C

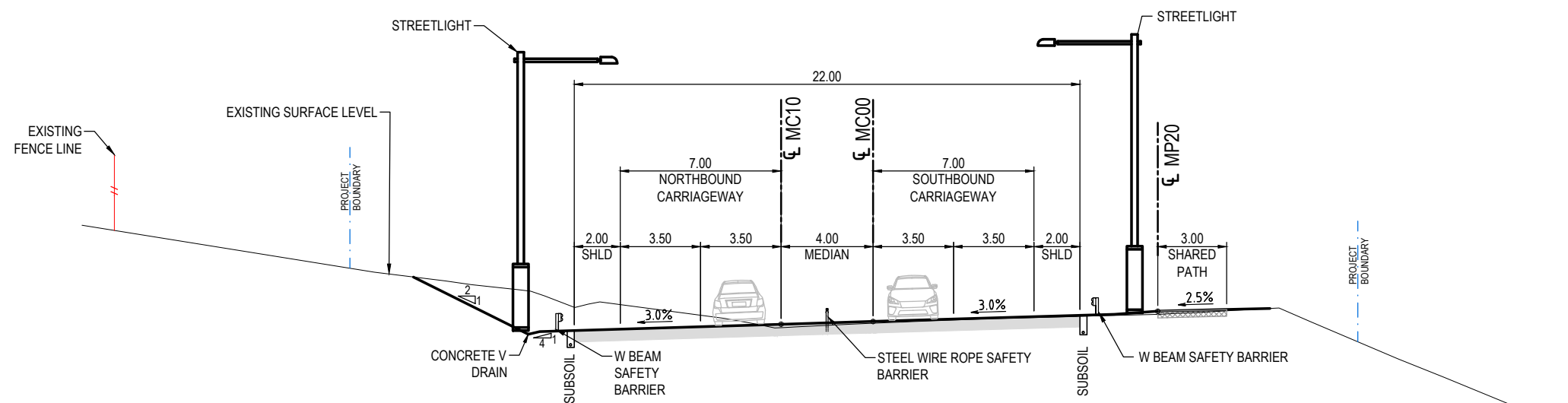
PRELIMINARY

NOTE:
DIMENSIONS ARE IN METRES



WILLIAM HOVELL DRIVE - CH4160

SECTION 7
SCALE 1: 125



WILLIAM HOVELL DRIVE - CH3500

SECTION 6
SCALE 1: 125

150 mm ON ORIGINAL
150
140
130
120
110
100
90
80
70
60
50
40
30
20
10
0

DRAWING FILE LOCATION / NAME V:\Vault\Projects\3002750\CAD\DWG\01_GE_General\3002750-GE-0033.dwg		PLOT DATE 12 Nov 2020		TIME 14:06:31	
REV	DATE	AMENDMENT / REVISION DESCRIPTION	WVR No.	APPROVAL	TITLE
A	19.06.2020	PRELIMINARY SKETCH PLAN	0007	DK	DRAFTER <i>R. GOOSEN</i>
B	08.10.2020	PRELIMINARY SKETCH PLAN	0014	DK	DRAFTING CHECK <i>K. CURLEY</i>
C	13.11.2020	PRELIMINARY SKETCH PLAN SUBMISSION	0015	DK	DESIGNER <i>B. LEJANO</i>
					DESIGN CHECK <i>T. MEADOWS</i>
					PROJECT MANAGER <i>S. RAVEN</i>
					PROJECT DIRECTOR <i>D. KEEP</i>

SCALES AT A1 SIZE DRAWING

SCALE 1:125

DESIGNER

SMEC
Member of the Surbana Jurong Group
SMEC AUSTRALIA PTY LTD
© ABN 47 065 475 149
SUITE 2, LEVEL 1, 243 NORTHBOURNE AVENUE
LYNEHAM ACT 2602 AUSTRALIA
SMEC PROJECT No 3002750

CLIENT

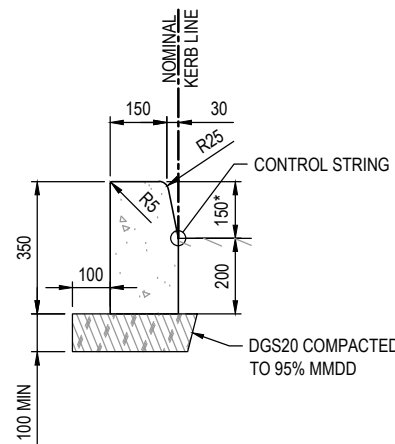
ACT
Government
Transport Canberra & City Services

PROJECT TITLE
WILLIAM HOVELL DRIVE DUPLICATION

TYPICAL SECTIONS
SHEET 3

SCALE AS SHOWN	PHASE PSP	PROJECT / DRAWING No. 3002750-GE-0033	REVISION C
-------------------	--------------	--	---------------

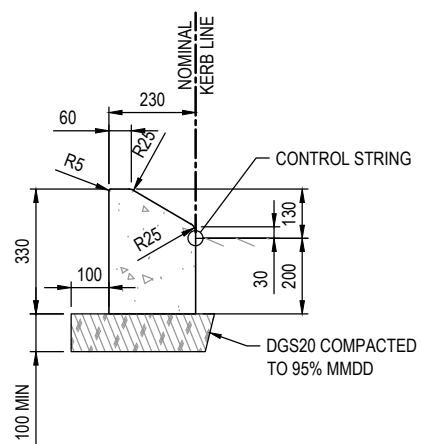
PRELIMINARY



KERB ONLY (KO)

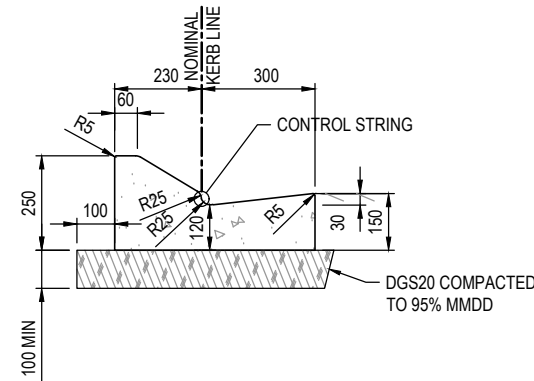
SCALE 1:10

* 200 FOR BARRIER KERB ONLY (BKO)



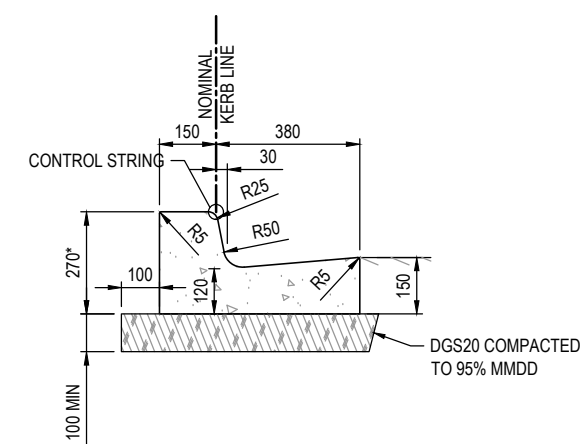
MOUNTABLE KERB (MK)

SCALE 1:10



MOUNTABLE KERB AND GUTTER (MKG)

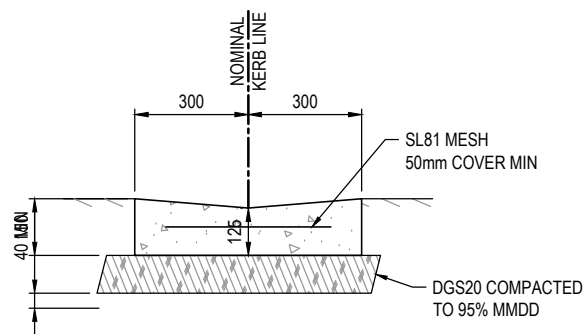
SCALE 1:10



KERB AND GUTTER (KG)

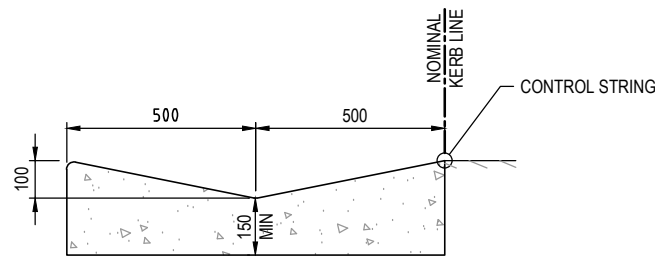
SCALE 1:10

320 FOR BARRIER KERB AND GUTTER (BKG)



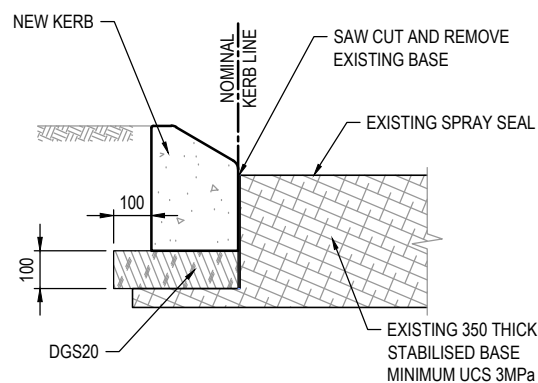
OPEN CONCRETE INVERT (OCI)

SCALE 1:10



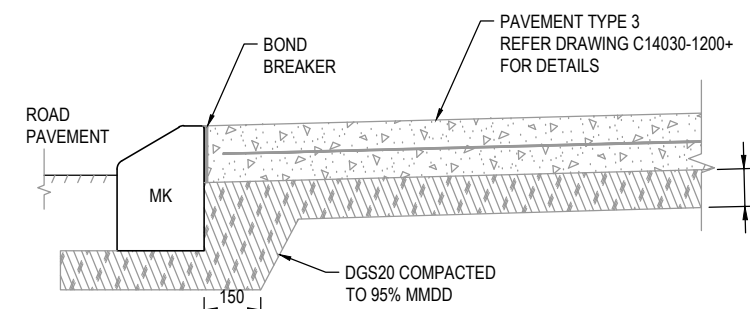
DISHED CROSSING INCREASED WATERWAY (SO)

SCALE 1:10



NEW KERB IN EXISTING PAVEMENT

SCALE 1:10

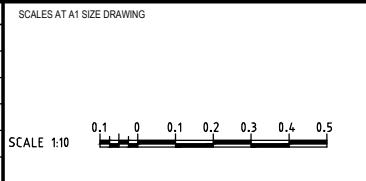


TYPICAL CONCRETE ISLAND INFILL DETAIL

SCALE 1:10

150 mm ON ORIGINAL
A1

DRAWING FILE LOCATION / NAME V:\Vault\Projects\3002750\CAD\DWG\01_GE_General\3002750-GE-0041.dwg		PLOT DATE 12 Nov 2020		TIME 14:30:47	
REV	DATE	AMENDMENT / REVISION DESCRIPTION	WVR No.	APPROVAL	TITLE
A	19.06.2020	PRELIMINARY SKETCH PLAN	0007	DK	DRAFTER <i>R. GOOSEN</i>
B	08.10.2020	PRELIMINARY SKETCH PLAN	0014	DK	DRAFTING CHECK <i>K. CURLEY</i>
C	13.11.2020	PRELIMINARY SKETCH PLAN SUBMISSION	0015	DK	DESIGNER <i>B. LEJANO</i>
					DESIGN CHECK <i>T. MEADOWS</i>
					PROJECT MANAGER <i>S. RAVEN</i>
					PROJECT DIRECTOR <i>D. KEEP</i>



DESIGNER

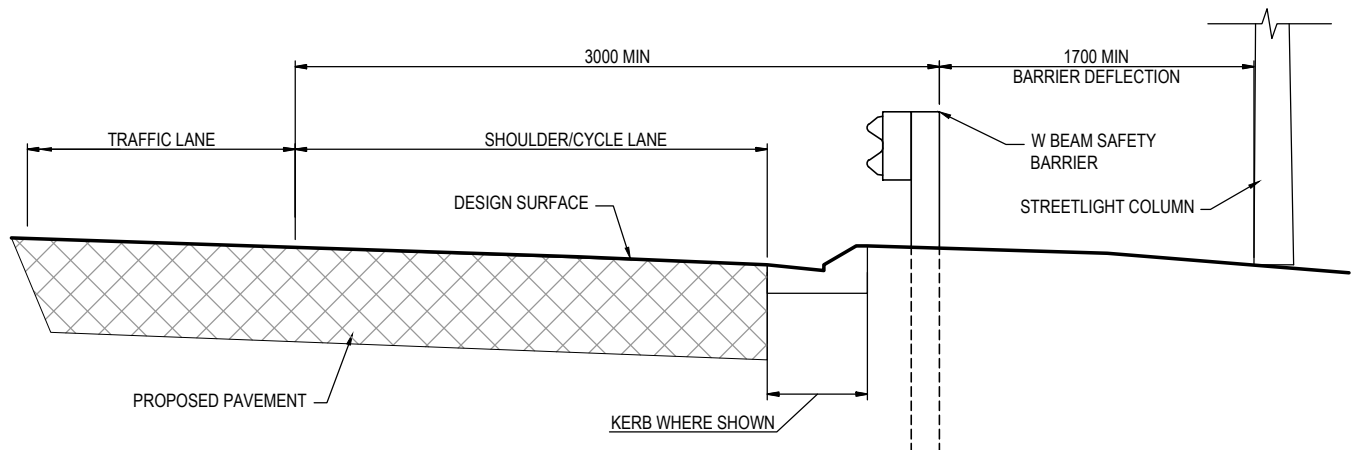
SMEC
Member of the Surlana Jurong Group
SMEC AUSTRALIA PTY LTD
© ABN 47 065 475 149
SUITE 2, LEVEL 1, 243 NORTHBOURNE AVENUE
LYNEHAM ACT 2602 AUSTRALIA
SMEC PROJECT No 3002750

CLIENT

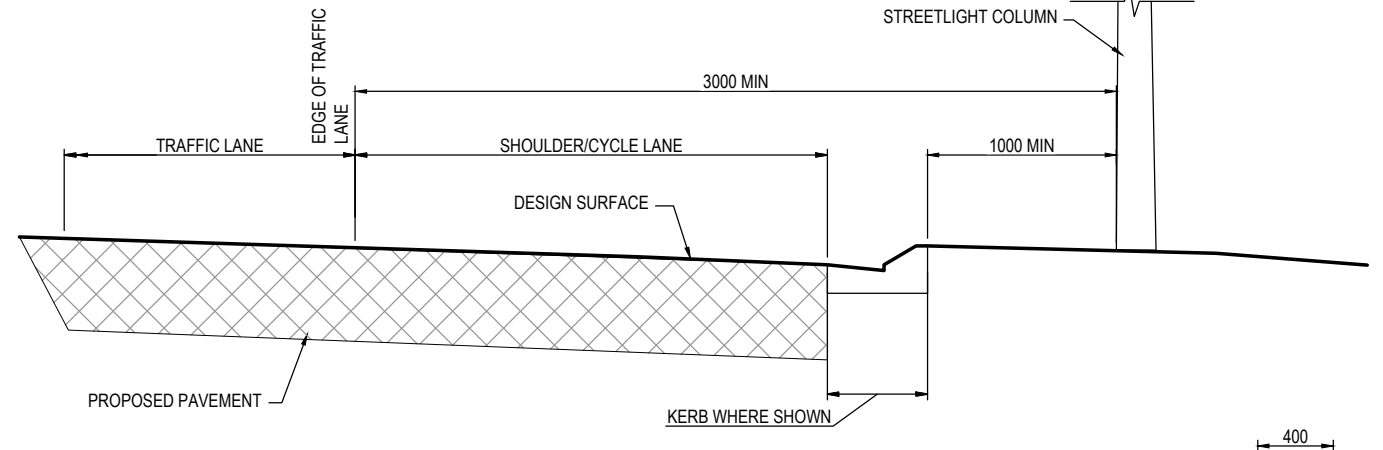
ACT
Government
Transport Canberra & City Services

PROJECT TITLE WILLIAM HOVELL DRIVE DUPLICATION		REVISION C	
TYPICAL DETAILS SHEET 1		PROJECT / DRAWING No. 3002750-GE-0041	
SCALE AS SHOWN	PHASE PSP	PROJECT / DRAWING No. 3002750-GE-0041	REVISION C

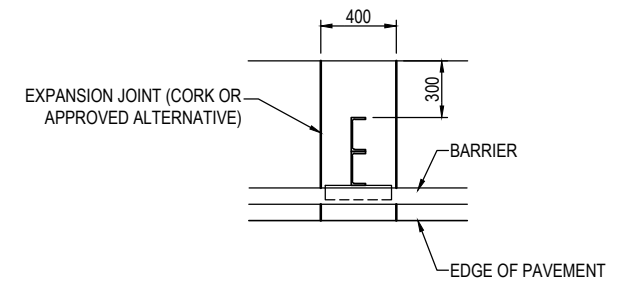
PRELIMINARY



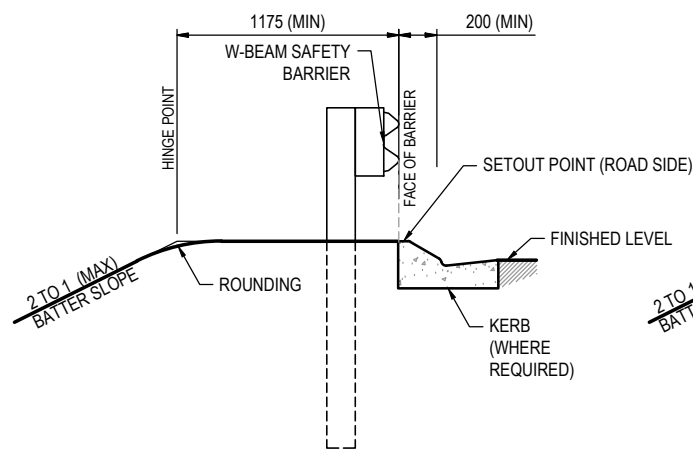
STREETLIGHT COLUMN OFFSET BEHIND SAFETY BARRIER
SCALE 1:20



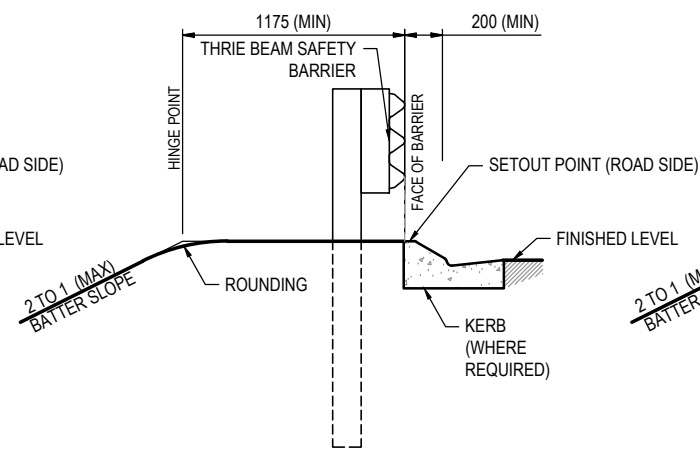
STREETLIGHT COLUMN OFFSET - NO SAFETY BARRIER
SCALE 1:20



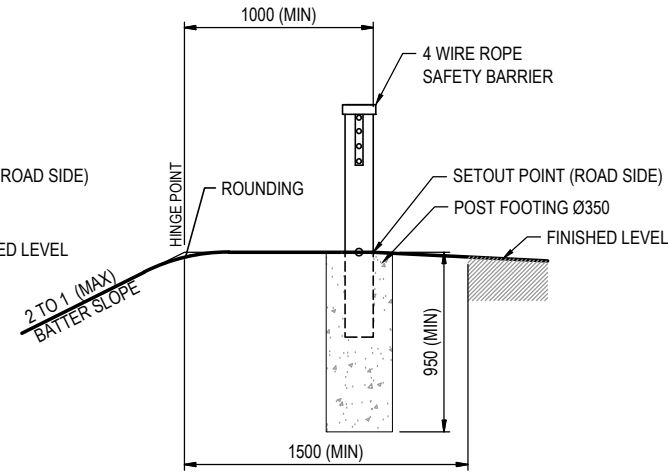
DETAIL OF TREATMENT WITH CONCRETE SURFACING AROUND BARRIER POST
SCALE 1:20



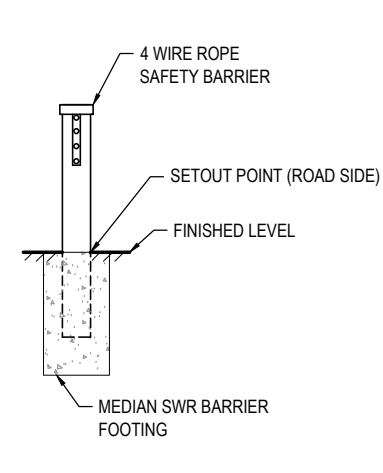
G4 W-BEAM
SCALE 1:20



THRIE BEAM BARRIER
SCALE 1:20

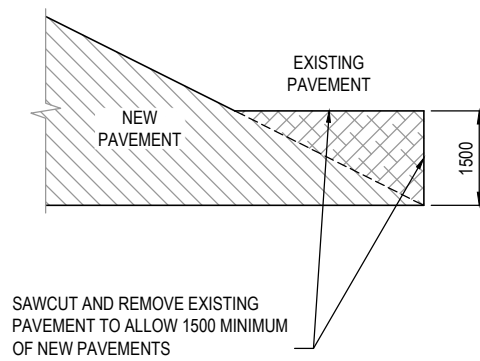


FOUR WIRE S.W.R. SAFETY BARRIER (VERGE APPLICATION)
SCALE 1:20

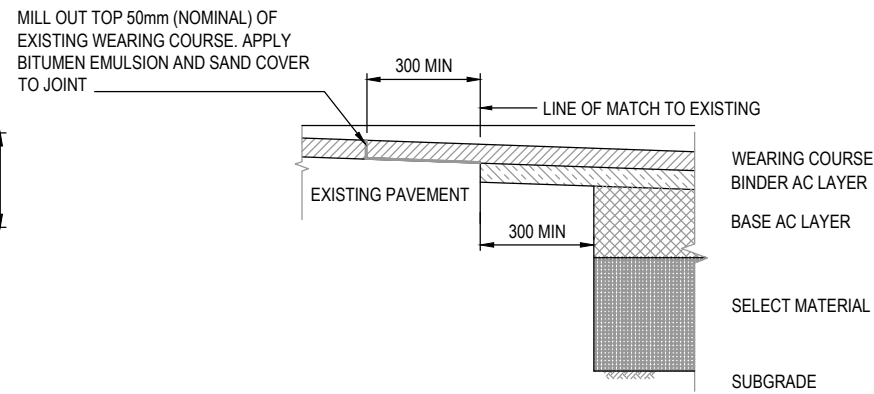


FOUR WIRE S.W.R. BARRIER (MEDIAN APPLICATION)
SCALE 1:20

- NOTES**
- ALL DIMENSIONS ARE IN MILLIMETRES U.N.O.
 - FOR GENERAL NOTES AND LEGEND REFER DRG No. 3002286-DRD-0002
 - SWR DENOTES STEEL WIRE ROPE.
 - FOR INSTALLATION OF APPROVED SWR REFER TO MANUFACTURER'S SPECIFICATIONS AND GUIDELINES.
 - REFER STANDARD DWG. MD.R132.B12.A.1 FOR TYPE 'F' CONCRETE BARRIER GALVANISED COVER FOR LIGHTING COLUMNS.
 - FOR DETAILS OF SURFACING TREATMENTS AROUND BARRIER FOOTINGS REFER DRG SERIES DPV-0700.
- SUBSOIL DRAINS**
- SUBSOIL DRAINS TO BE PROVIDED AT ALL NEW PERMANENT KERB AND GUTTER AND PAVEMENT EDGES
 - OUTLET CONNECTIONS TO BE MADE AT SUMPS
 - SUBSOILS TO BE CONSTRUCTED OF SUBBASE PAVEMENT, PRIOR TO CONSTRUCTION OF KERBS
- KERBS**
- EXPANSION JOINTS TO BE PLACED AT TP'S, STRUCTURES AND AT 15m MAX SPACING FOR FULL DEPTH OF KERB SECTION
 - DUMMY JOINTS TO BE CUT TO FULL DEPTH OF KERB SECTION

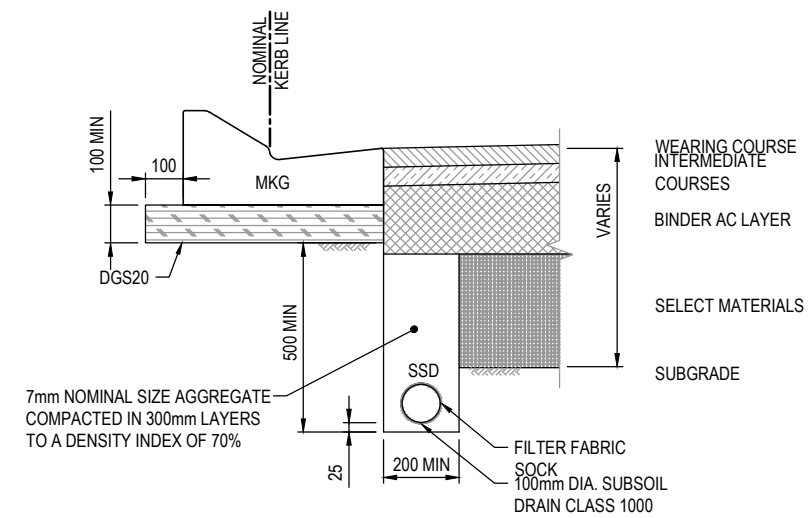


PLAN
NOT TO SCALE



SECTION
SCALE 1:10

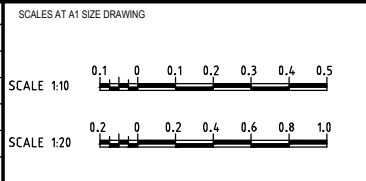
MATCH TO EXISTING PAVEMENT



SUBSOIL DRAIN DETAIL - MOUNTABLE KERB AND GUTTER (MKG) (MK) (KG) (KO)
SCALE 1:10

150 mm ON ORIGINAL
A1

DRAWING FILE LOCATION / NAME V:\Vault\Projects\3002750\CAD\DWG\01_GE_General\3002750-GE-0042.dwg			PLOT DATE 12 Nov 2020		TIME 14:07:24	
EXTERNAL REFERENCE FILES	REV	DATE	AMENDMENT / REVISION DESCRIPTION	WVR No.	APPROVAL	TITLE
	A	19.06.2020	PRELIMINARY SKETCH PLAN	0007	DK	DRAFTER <i>R. GOOSEN</i>
	B	08.10.2020	PRELIMINARY SKETCH PLAN	0014	DK	DRAFTING CHECK <i>K. CURLEY</i>
	C	13.11.2020	PRELIMINARY SKETCH PLAN SUBMISSION	0015	DK	DESIGNER <i>B. LEJANO</i>
						DESIGN CHECK <i>T. MEADOWS</i>
						PROJECT MANAGER <i>S. RAVEN</i>
						PROJECT DIRECTOR <i>D. KEEP</i>



DESIGNER

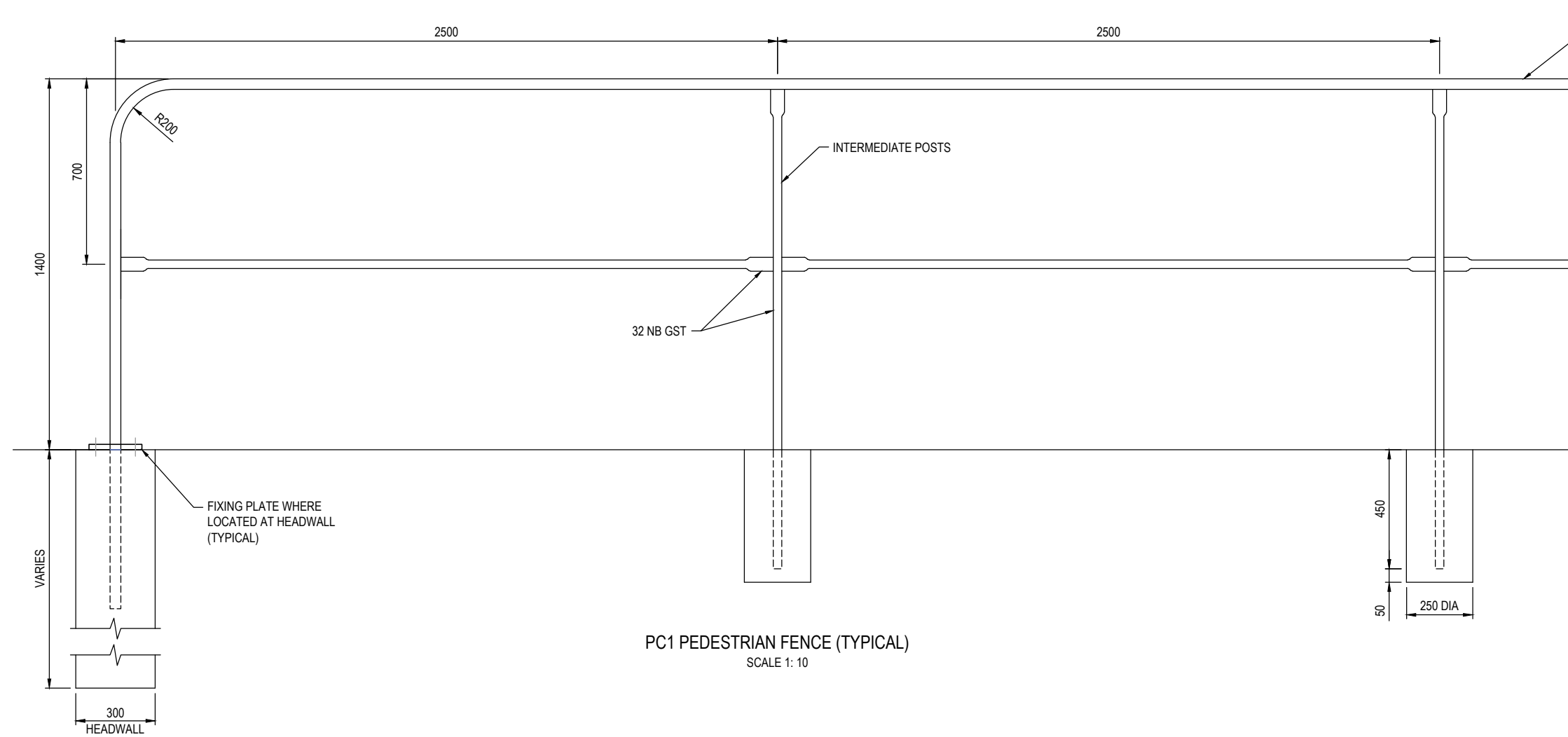
SMEC
Member of the **Surbana Jurong Group**
SMEC AUSTRALIA PTY LTD
© ABN 47 065 475 149
SUITE 2, LEVEL 1, 243 NORTHBOURNE AVENUE
LYNEHAM ACT 2602 AUSTRALIA
SMEC PROJECT No 3002750

CLIENT

ACT
Government
Transport Canberra & City Services

PROJECT TITLE WILLIAM HOVELL DRIVE DUPLICATION		REVISION C	
TYPICAL DETAILS SHEET 2		PROJECT / DRAWING No. 3002750-GE-0042	
SCALE AS SHOWN	PHASE PSP	PROJECT / DRAWING No. 3002750-GE-0042	REVISION C

PRELIMINARY



PC1 PEDESTRIAN FENCE NOTES

1. ALL POSTS AND RAILS TO BE MEDIUM DUTY GALVANISED STEEL TUBE (GST) OF THE NOMINAL DIAMETERS SHOWN
2. FITTINGS TO BE GALVANISED UNLESS OTHERWISE SPECIFIED
3. ALL POSTS TO BE SET VERTICAL
4. CONCRETE FOR FOOTINGS TO BE 32MPa
5. ALL WELDS AND OTHER AREAS OF DAMAGED SURFACE TO BE WIDE BRUSHED TO BARE METAL AND PAINTED WITH 2 COATS OF ZINC RICH PAINT

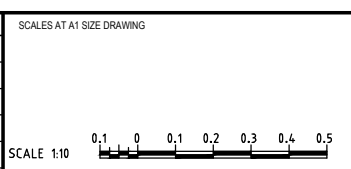
PC1 PEDESTRIAN FENCE (TYPICAL)
SCALE 1: 10

150 mm ON ORIGINAL

A1
0 10 20 30 40 50 60 70 80 90 100 110 120 130 140 150

DRAWING FILE LOCATION / NAME V:_Vault\Projects\3002750\CAD\DWG\01_GE_General\3002750-GE-0043.dwg		PLOT DATE 12 Nov 2020		TIME 14:07:51	
EXTERNAL REFERENCE FILES	REV	DATE	AMENDMENT / REVISION DESCRIPTION	WVR No.	APPROVAL
	A	19.06.2020	PRELIMINARY SKETCH PLAN	0007	DK
	B	08.10.2020	PRELIMINARY SKETCH PLAN	0014	DK
	C	13.11.2020	PRELIMINARY SKETCH PLAN SUBMISSION	0015	DK

TITLE	NAME
DRAFTER	R. GOOSEN
DRAFTING CHECK	K. CURLEY
DESIGNER	B. LEJANO
DESIGN CHECK	T. MEADOWS
PROJECT MANAGER	S. RAVEN
PROJECT DIRECTOR	D. KEEP



DESIGNER

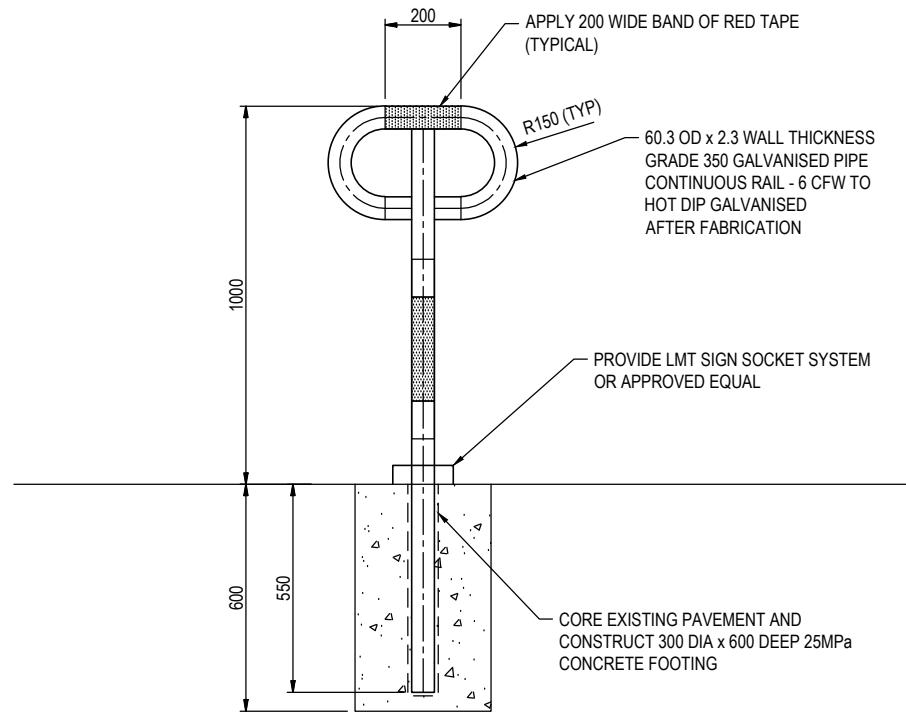
SMEC
Member of the Surlana Jurong Group
SMEC AUSTRALIA PTY LTD
© ABN 47 065 475 149
SUITE 2, LEVEL 1, 243 NORTHBOURNE AVENUE
LYNEHAM ACT 2602 AUSTRALIA
SMEC PROJECT No 3002750

CLIENT

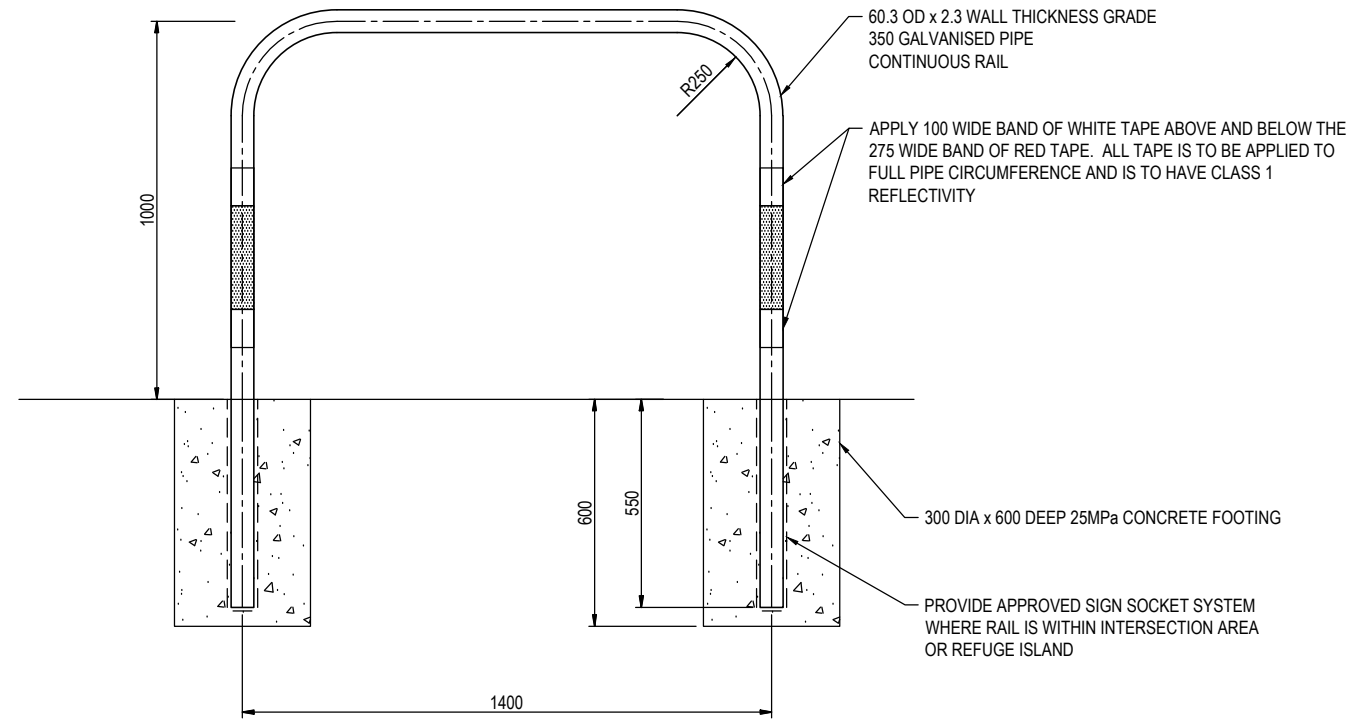
ACT
Government
Transport Canberra & City Services

PROJECT TITLE WILLIAM HOVELL DRIVE DUPLICATION		REVISION C	
TYPICAL DETAILS SHEET 3		PROJECT / DRAWING No. 3002750-GE-0043	
SCALE AS SHOWN	PHASE PSP	PROJECT / DRAWING No. 3002750-GE-0043	REVISION C

PRELIMINARY



CYCLE REST RAIL (TYPE A) DETAIL
SCALE 1:100



1.4m CYCLE REST RAIL DETAIL
SCALE 1:100

150 mm ON ORIGINAL
A1

DRAWING FILE LOCATION / NAME V:_Vault\Projects\3002750\CAD\DWG\01_GE_General\3002750-GE-0044.dwg		PLOT DATE 12 Nov 2020		TIME 14:08:16	
EXTERNAL REFERENCE FILES	REV	DATE	AMENDMENT / REVISION DESCRIPTION	WVR No.	APPROVAL
	A	19.06.2020	PRELIMINARY SKETCH PLAN	0007	DK
	B	08.10.2020	PRELIMINARY SKETCH PLAN	0014	DK
	C	13.11.2020	PRELIMINARY SKETCH PLAN SUBMISSION	0015	DK

TITLE	NAME
DRAFTER	R. GOOSEN
DRAFTING CHECK	K. CURLEY
DESIGNER	B. LEJANO
DESIGN CHECK	T. MEADOWS
PROJECT MANAGER	S. RAVEN
PROJECT DIRECTOR	D. KEEP

DESIGNER



SMEC
Member of the Surlana Jurong Group
SMEC AUSTRALIA PTY LTD
© ABN 47 065 475 149
SUITE 2, LEVEL 1, 243 NORTHBOURNE AVENUE
LYNEHAM ACT 2602 AUSTRALIA
SMEC PROJECT No 3002750

CLIENT



ACT
Government
Transport Canberra & City Services

PROJECT TITLE WILLIAM HOVELL DRIVE DUPLICATION		REVISION C	
TYPICAL DETAILS SHEET 4		PROJECT / DRAWING No. 3002750-GE-0044	
SCALE AS SHOWN	PHASE PSP	PROJECT / DRAWING No. 3002750-GE-0044	REVISION C

PRELIMINARY

