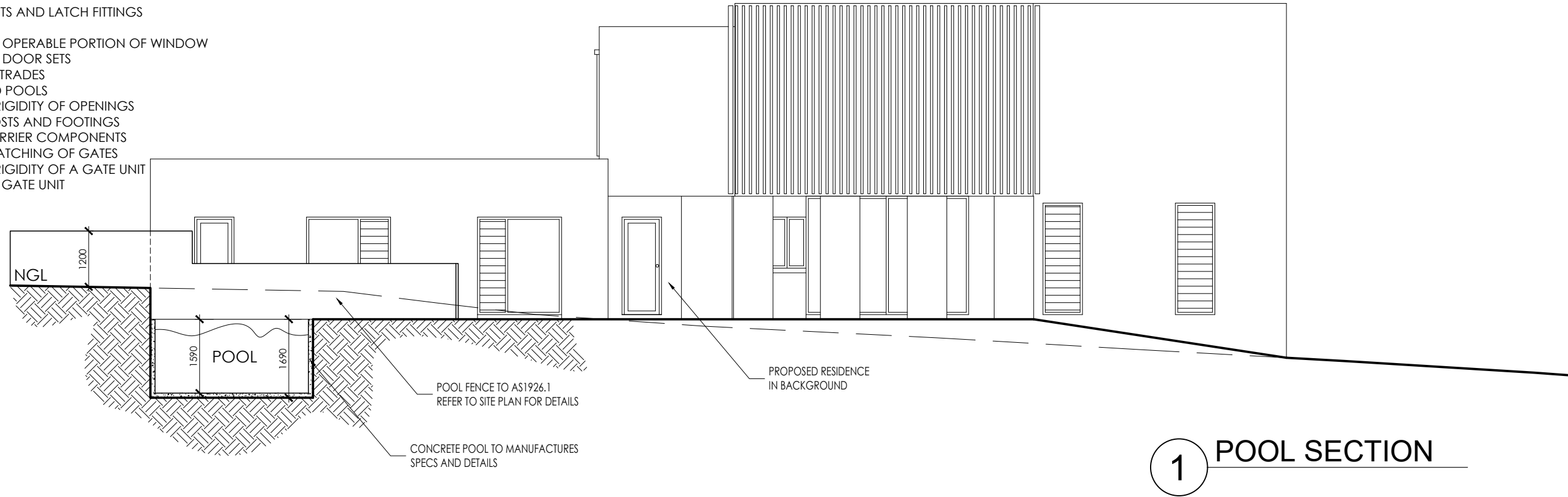


POOL SAFETY BARRIER NOTES:  
ALL POOL SAFETY BARRIERS TO BE AS PER AS1926.1  
2.2 NON-CLIMBABLE ZONE (NCZ)  
2.3 BARRIERS  
2.4 GATES, GATE UNITS AND LATCH FITTINGS  
2.5 OTHER BARRIERS  
2.6 CHILD-RESISTANT OPERABLE PORTION OF WINDOW  
2.7 CHILD-RESISTANT DOOR SETS  
2.8 BALCONY BALUSTRADES  
2.9 ABOVE GROUND POOLS  
3.1 STRENGTH AND RIGIDITY OF OPENINGS  
3.2 STRENGTH OF POSTS AND FOOTINGS  
3.3 STRENGTH OF BARRIER COMPONENTS  
3.4 CLOSING AND LATCHING OF GATES  
3.5 STRENGTH AND RIGIDITY OF A GATE UNIT  
3.6 DURABILITY OF A GATE UNIT



NOTE - IT IS THE CLIENT/OWNERS, BUILDER AND CONTRACTORS OBLIGATION TO READ THROUGH THE FULL SET OF PLANS PROVIDED THOROUGHLY PRIOR TO ANY CONSTRUCTION OR WORKS.

**BUILDER/CONTRACTORS TO CONFIRM DIMENSIONS ONSITE PRIOR TO COMMENCEMENT OF WORKS.**

NOTE: ALL WORK TO BE DONE IN ACCORDANCE WITH THE NCC, AUS. STANDARDS, SDHDC ACT AND LIVABLE HOUSING DESIGN STANDARD 2022

