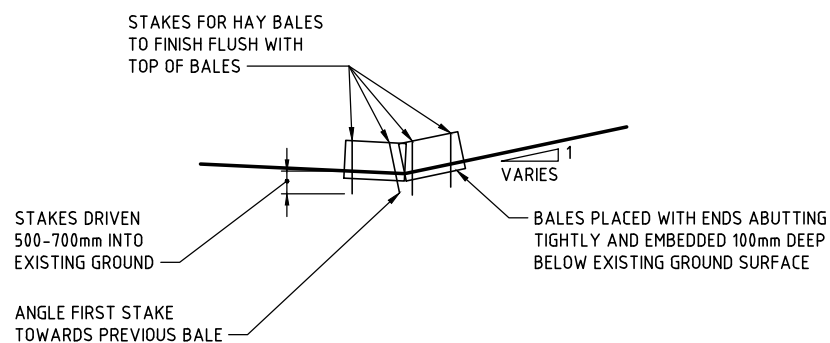


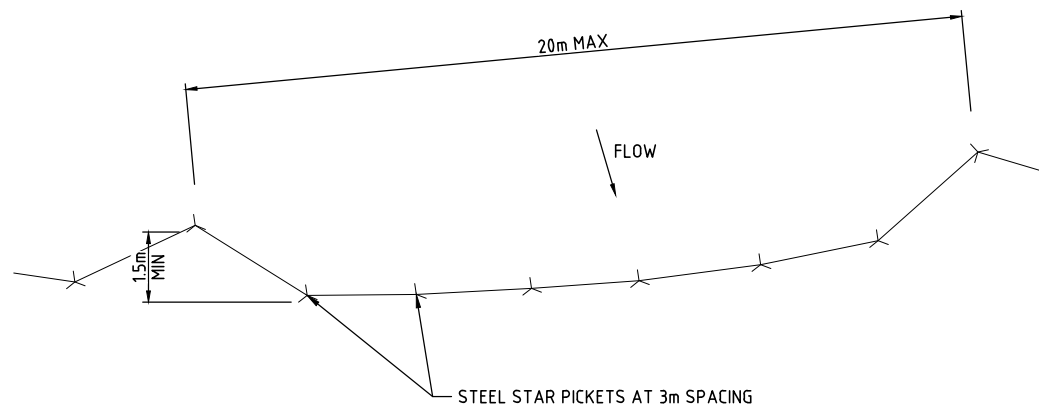
CONSTRUCTION NOTES:

1. STRIP TOPSOIL AND LEVEL SITE
2. COMPACT SUBGRADE
3. COVER AREA WITH NEEDLE-PUNCHED GEOTEXTILE BIDIM A34 OR APPROVED EQUIVALANT
4. CONSTRUCT 200mm THICK PAD OVER GEOTEXTILE USING ROADBASE OR 30mm AGGREGATE. MINIMUM LENGTH 15 METRES OR TO BUILDING ALIGNMENT. MINIMUM WIDTH 3 METRES
5. CONSTRUCT HUMP IMMEDIATELY WITHIN BOUNDARY TO DIVERT WATER TO A SEDIMENT FENCE OR OTHER SEDIMENT TRAP.

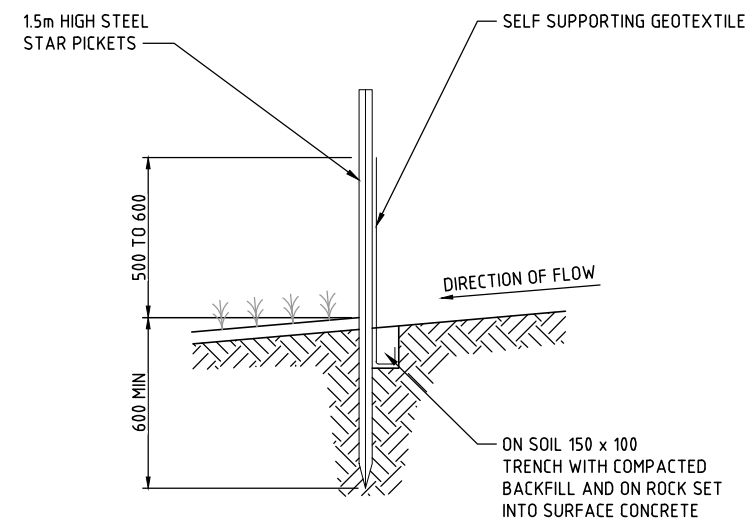
STABILISED CONSTRUCTION SITE ENTRANCE TYPICAL DETAIL
NOT TO SCALE



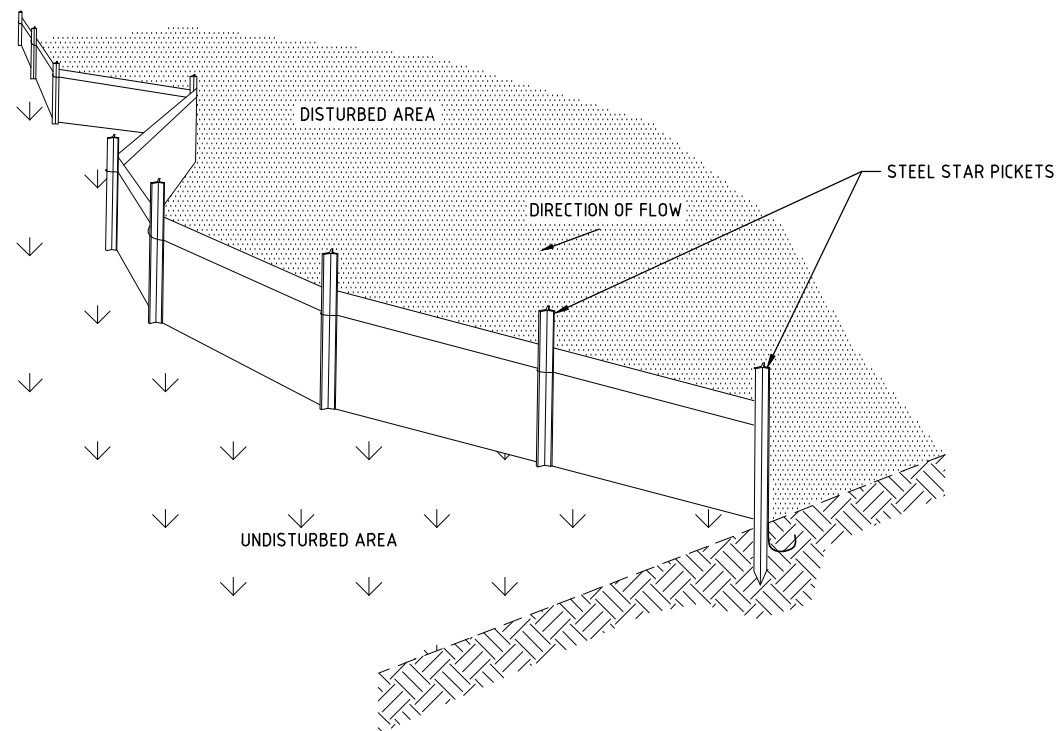
STAKED HAYBALE TYPICAL DETAIL
NOT TO SCALE



1.5m HIGH SEDIMENT FENCE PLAN TYPICAL DETAIL
NOT TO SCALE



SEDIMENT FENCE SECTION TYPICAL DETAIL
NOT TO SCALE



1.5m HIGH SEDIMENT FENCE PERSPECTIVE TYPICAL DETAIL
NOT TO SCALE

NOTE:

1. VITAL BON-MATT STONEWALL OR SIMILAR APPROVED PRODUCT, TO BE APPLIED TO DISTURBED AREAS AS INSTRUCTED BY THE PRINCIPAL'S APPROVED PERSON.
2. PERPENDICULAR RETURNS TO BE INSTALLED AT THE ENDS OF SEDIMENT FENCING.
3. SEDIMENT FENCING RETURNS TO BE CONSTRUCTED AT MAXIMUM 80m INTERVALS ALONG SLOPED SECTIONS TO REDUCE FLOW VELOCITY.
4. STAKED BAILES OR CHECK DAMS TO BE CONSTRUCTED AT MAXIMUM 80m INTERVALS TO SLOW WET WEATHER FLOWS ON STEEP SECTIONS WITH A GRADE GREATER THAN 2%.
5. CLEAN WATER DISCHARGING INTO THE SITE TO BE DIVERTED THROUGH TEMPORARY DRAINS TO CROSSING CONVERT TO SEPARATE IT FROM CLEAN WATER.
6. PEARL GYPSUM TO BE USED ALONG SWALES AND CHECK DAMS WHERE WATER IS LEAVING THE SITE, TO AID IN PRECIPITATION SOLIDS.

DR

150 mm ON ORIGINAL
A1

DRAWING FILE LOCATION / NAME V:\Vault\Projects\3002750\CAD\DWG\20_EC_Erosion_sediment\3002750-EC-2105.dwg		PLOT DATE 23 May 2024		TIME 17:57:58	
EXTERNAL REFERENCE FILES	REV A	DATE 15.03.2024	AMENDMENT / REVISION DESCRIPTION DRAFT DOCUMENT READINESS (DR) SUBMISSION	WVR No. 0036	APPROVAL T.VN
			DRAFTER <i>N. BROOKE-TAYLOR</i>	SCALES AT A1 SIZE DRAWING	
			DRAFTING CHECK <i>X. SECUBAN</i>	DESIGNER <i>T. THINN</i>	
			DESIGN CHECK <i>L. MULYADI</i>	PROJECT MANAGER <i>K. DECANHA</i>	
			PROJECT DIRECTOR <i>T. VAN NIEKERK</i>	DESIGNER SMEC Member of the Surbana Jurong Group ABN 47 065 475 149 LEVEL 9, 12 MOORE STREET CANBERRA ACT 2601 AUSTRALIA SMEC PROJECT No 3002750	
			CLIENT ACT Government Transport Canberra & City Services		PROJECT TITLE WILLIAM HOVELL DRIVE DUPLICATION
			PROJECT / DRAWING No. 3002750-EC-2105		REVISION B

PROJECT TITLE WILLIAM HOVELL DRIVE DUPLICATION		CONCEPT EROSION AND SEDIMENT CONTROL TYPICAL DETAILS SHEET 01	
SCALE AS SHOWN	PHASE DETAIL DESIGN	PROJECT / DRAWING No. 3002750-EC-2105	REVISION B