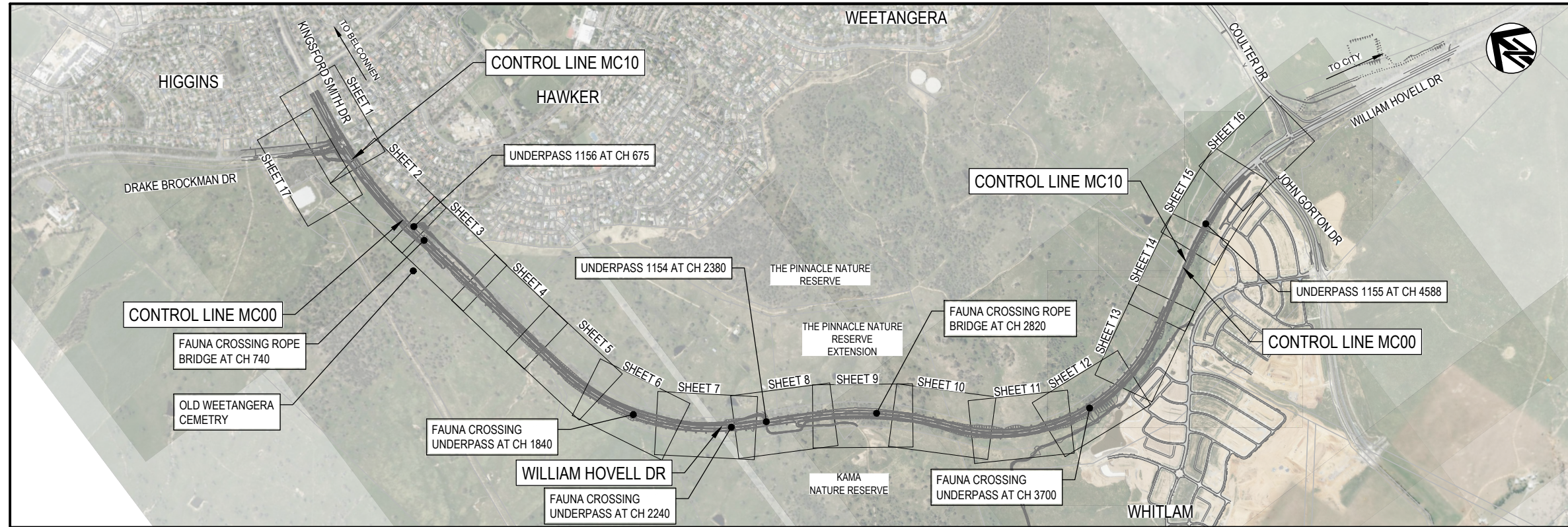
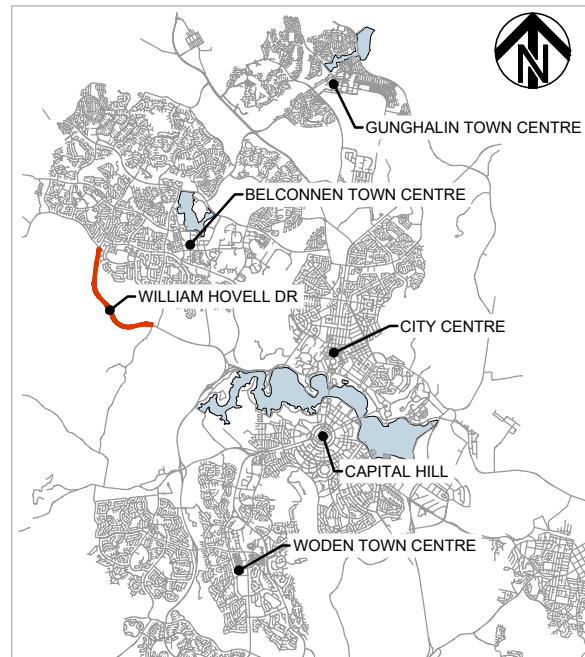


WILLIAM HOVELL DRIVE DUPLICATION PACKAGE 03 CONCEPT EROSION AND SEDIMENT CONTROL



LOCALITY PLAN
SCALE 1:10000



PACKAGE REFERENCES		
PACKAGE 01	INDEX, LOCALITY PLAN, TYPICAL SECTIONS, TYPICAL DETAILS AND MISCELLANEOUS DETAILS	GE
PACKAGE 03	GENERAL ARRANGEMENT PLAN	RD
PACKAGE 04	ROAD ALIGNMENT PLAN	RD
PACKAGE 05	LONGITUDINAL SECTIONS	LS
PACKAGE 06	CROSS SECTIONS	XS
PACKAGE 07	DRAINAGE	DD
PACKAGE 08	ICON WATER	WS
PACKAGE 09	UTILITIES - TELECOMMUNICATIONS, ELECTRICAL	UT
PACKAGE 09.1	DIGITAL, DATA AND TECHNOLOGY SOLUTIONS (DDTS)	DDTS
PACKAGE 10	PAVEMENT AND SUBSOILS	PV
PACKAGE 15	LINES AND SIGNS, TRAFFIC SIGNALS	TCD, TCS
PACKAGE 17	STRUCTURES	ST
PACKAGE 20	CONCEPT EROSION AND SEDIMENT CONTROL	EC
PACKAGE 22	CONCEPT TEMPORARY WORKS PLAN	CS
PACKAGE 110	STREETLIGHTING - RUDDS	
PACKAGE 115	LANDSCAPE MANAGEMENT - ENVIROLINKS	

DR

150 mm ON ORIGINAL
A1

DRAWING FILE LOCATION / NAME V:_Vault\Projects\3002750\CAD\DWG\20_EC_Erosion_sediment\3002750-EC-2100.dwg		PLOT DATE 23 May 2024		TIME 17:56:32	
EXTERNAL REFERENCE FILES		REV A	DATE 15.03.2024	AMENDMENT / REVISION DESCRIPTION DRAFT DOCUMENT READINESS (DR) SUBMISSION	
WVR No. 0036		APPROVAL T.VN		TITLE DRAFTER <i>N. BROOKE-TAYLOR</i> DRAFTING CHECK <i>X. SECUBAN</i> DESIGNER <i>T. THINN</i> DESIGN CHECK <i>L. MULYADI</i> PROJECT MANAGER <i>K. DECANHA</i> PROJECT DIRECTOR <i>T. VAN NIEKERK</i>	
DESIGNER SMEC Member of the Surbana Jurong Group ABN 47 065 475 149 LEVEL 9, 12 MOORE STREET CANBERRA ACT 2601 AUSTRALIA SMEC PROJECT No 3002750		CLIENT ACT Government Transport Canberra & City Services		PROJECT TITLE WILLIAM HOVELL DRIVE DUPLICATION CONCEPT EROSION AND SEDIMENT CONTROL COVER SHEET	
SCALE AS SHOWN		PHASE DETAIL DESIGN		PROJECT / DRAWING No. 3002750-EC-2100	
REVISION B					