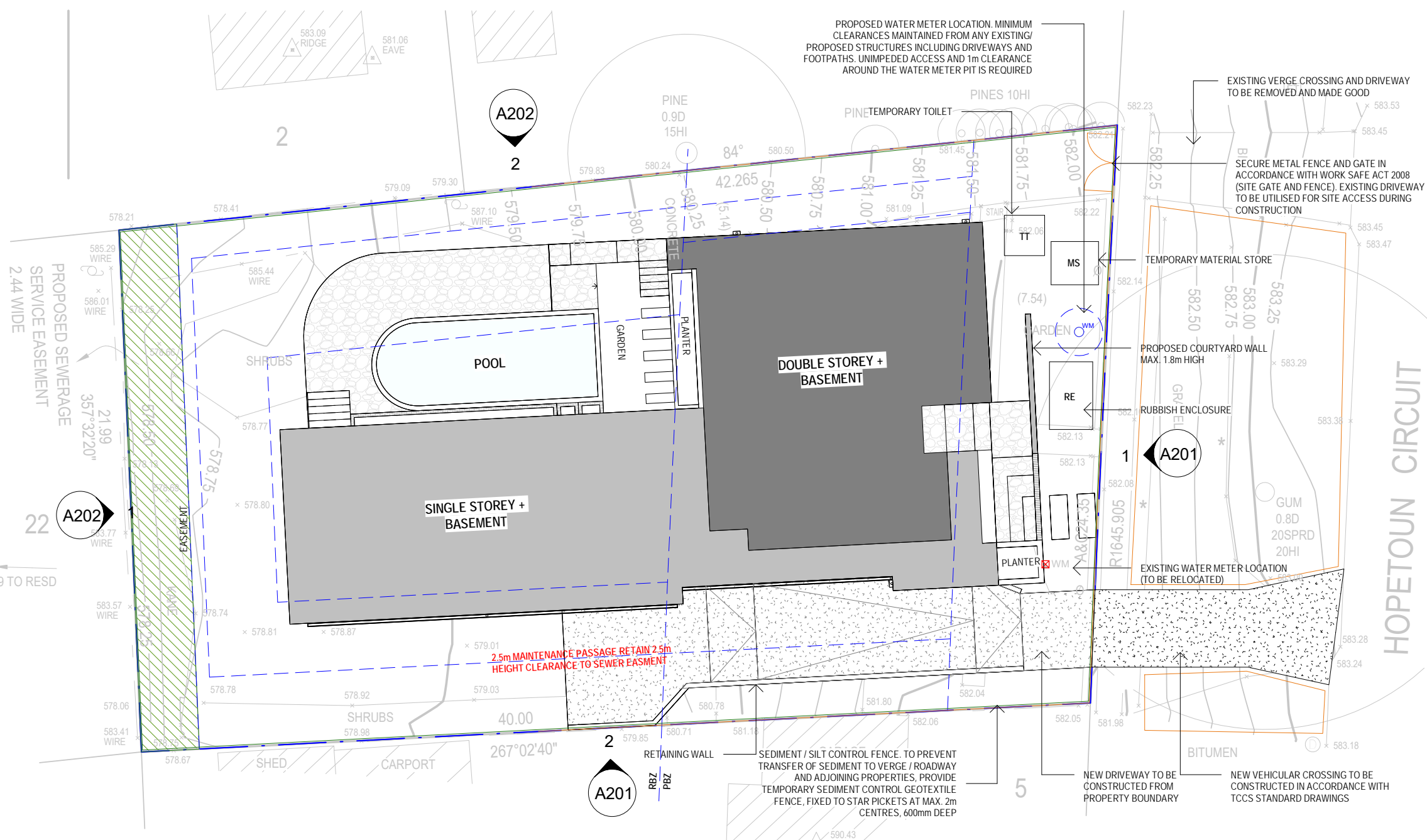


USE FIGURED DIMENSIONS AND DO NOT SCALE FF DRAWINGS. ALL DIMENSIONS AND LEVELS TO BE CHECKED AND VERIFIED ON SITE PRIOR TO COMMENCEMENT OF WORKS.

ALL STANDARD OF WORKMANSHIP TO CONFORM TO ALL RELEVANT PARTS OF SPECIFICATION, AUSTRALIAN STANDARDS AND BCA/NCC.

REPRODUCTION OF THIS DRAWING IN FULL OR PART WITHOUT THE WRITTEN PERMISSION OF THURSDAY ARCHITECTURE CONSTITUTES AN INFRINGEMENT OF COPYRIGHT.



**SEDIMENT AND EROSION CONTROL**  
DEVELOPMENT TO COMPLY WITH THR ENVIRONMENT PROTECTION AUTHORITY, ENVIRONMENT PROTECTION GUIDELINES FOR CONSTRUCTION AND LAND DEVELOPMENT IN THE ACT, AUGUST 2007

BUILDER IS TO PROVIDE ALL ON SITE STORMWATER RETENTION AND EPA MEASURES IN ACCORDANCE WITH WITH TAMS; ENVIRONMENTAL PROTECTION GUIDELINES FOR CONSTRUCTION AND LAND DEVELOPMENT IN THE ACT.

ALL TREES LOCATED IN THE ROAD RESERVE, VERGE, PUBLIC OPEN SPACE AND ON UNLEASED TERRITORY LAND, ARE TO BE RETAINED AND REMAIN UNDAMAGED.

SITE SHEDS, STORAGE SHEDS, SITE AMENITIES OR BILL BOARDS ARE NOT TO BE ERECTED ON VERGES OR PUBLIC OPEN SPACE.

**LANDSCAPE MANAGEMENT AND PROTECTION PLAN**  
DURING THE PROJECT, ALL EXISTING VERGE GRASS COVER MUST BE RETAINED IN IT'S PRE-EXISTING CONDITION. WATERING MAY BE REQUIRED TO RETAIN GRASS AND TREES IN GOOD CONDITION.

PROVIDE TEMPORARY 1.8m HIGH FENCING ON VERGE DURING CONSTRUCTION. NO CONSTRUCTION MATERIAL IS TO BE STORED ON VERGE OR PUBLIC OPEN SPACE. NO CAR PARKING OR EQUIPMENT PERMITTED ON VERGES OR ADJACENT PARKLAND.

**EXISTING VERGE MANAGEMENT NOTES**  
INSTALL 1800mm HIGH TEMPORARY FENCING WITH CONCRETE FEET OR INSTALL 1800mm CHAIN MESH FENCE SUPPORTED BY 2400mm TALL STAR STEEL POSTS AROUND VERGES AND EXISTING VEGETATION.

FENCING TO BE ERECTED ON COMMENCEMENT OF SITE WORK AND REMOVED AT COMPLETION OF CONSTRUCTION AND COMMENCEMENT OF VERGE RESTORATION. THE FENCE IS TO REMAIN CONTINUOUS THROUGHOUT PROJECT, EXCEPT WHERE APPROVED SERVICE INSTALLATION OCCURS.

ENSURE ADEQUATE WATER IS APPLIED TO THE ROOT ZONE OF RETAINED TREES THROUGHOUT THE CONSTRUCTION PERIOD. ALL WORK IS TO BE IN ACCORDANCE WITH THE 'CANBERRA LANDSCAPE GUIDELINES' & THE BASIC SPECIFICATIONS FOR ROADS HYDRAULICS AND LANDSCAPE. JULY 1991.  
MAKE GOOD ANY DAMAGE TO EXISTING GRASS VERGES, REINSTATE AS PER BASIC SPECIFICATIONS.

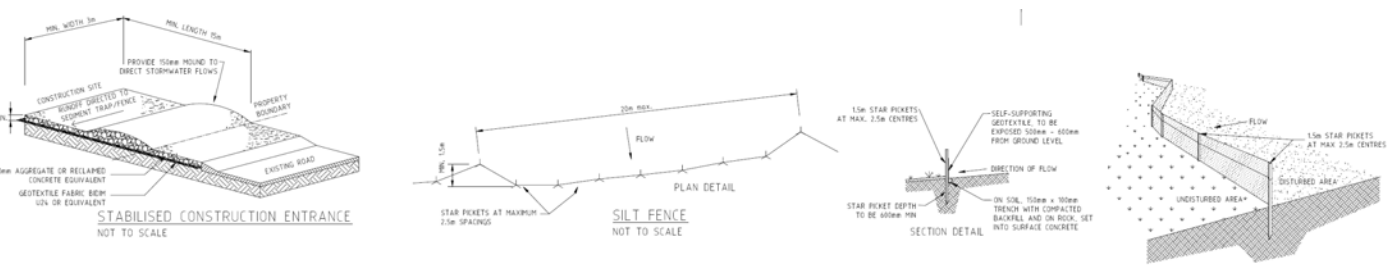
IT IS THE RESPONSIBILITY OF THE BUILDER TO ENSURE THAT ANY DISTURBANCES TO THE VERGE GROUND COVER, TREES, PATHS, KERB, ROAD WAYS OR SERVICES OCCURRING FROM EITHER CONSTRUCTION WORKS OR STORAGE OF MACHINERY DURING THE CONSTRUCTION WORKS ARE RECTIFIED TO THE SATISFACTION OF RELEVANT AUTHORITIES.

AT THE COMPLETION OF CONSTRUCTION, VERGES SHOULD STILL HAVE ESTABLISHED DRYLAND GRASS COVER. TOPSOIL IS NOT TO BE REMOVED AND LEVELS NOT TO BE CHANGED. NO CAR PARKING OR EQUIPMENT PARKING PERMITTED ON VERGES OR UNDER DRIPLINE OF RETAINED TREES.

NO SITE SHEDS, STORAGE SHEDS, SITE AMENITIES OR BILLBOARDS TO BE ERECTED ON VERGES OR UNDER DRIPLINE OF RETAINED TREES.

NO CONSTRUCTION MATERIAL TO BE STORED ON VERGES OR UNDER DRIPLINE OF RETAINED TREES.

LEGEND	
	BOUNDARY
	SECURE SITE FENCE AND GATES
	SEDIMENT/SILT CONTROL FENCE
	HYDROVACUUM EXTEND (TO MAX 150MM DEPTH)



**LANDSCAPE MANAGEMENT AND PROTECTION PLAN**  
DURING THE PROJECT, ALL EXISTING VERGE GRASS COVER MUST BE RETAINED IN IT'S PRE-EXISTING CONDITION. WATERING MAY BE REQUIRED TO RETAIN GRASS AND TREES IN GOOD CONDITION.

PROVIDE TEMPORARY 1.8m HIGH FENCING ON VERGE DURING CONSTRUCTION. NO CONSTRUCTION MATERIAL IS TO BE STORED ON VERGE OR PUBLIC OPEN SPACE. NO CAR PARKING OR EQUIPMENT PERMITTED ON VERGES OR ADJACENT PARKLAND.

**SEDIMENT EROSION CONTROL PLAN**  
BUILDER IS TO PROVIDE ALL ON SITE STORMWATER RETENTION AND EPA MEASURES IN ACCORDANCE WITH WITH TAMS; ENVIRONMENTAL PROTECTION GUIDELINES FOR CONSTRUCTION AND LAND DEVELOPMENT IN THE ACT.

ALL TREES LOCATED IN THE ROAD RESERVE, VERGE, PUBLIC OPEN SPACE AND ON UNLEASED TERRITORY LAND, ARE TO BE RETAINED AND REMAIN UNDAMAGED.

SITE SHEDS, STORAGE SHEDS, SITE AMENITIES OR BILL BOARDS ARE NOT TO BE ERECTED ON VERGES OR PUBLIC OPEN SPACE.

Revisions		
No.	Description	Date

**HOPETOUN CIRCUIT**

BLOCK 4 SECTION 75  
81 HOPETOUN CIRCUIT YARRALUMLA  
2312

LMP/ SECP



1:200 @ A3

**A024**

PO Box 3673  
Manuka ACT 2603  
ThursdaysArchitecture.com.au  
ACT Registration No. 2289  
NSW Registration No. 9528