

File Name: P:\2019\191148_Yarralumla-Brickworks\04_CAD\4.2_Drawings\CIV\EDP\191148-drg-civ-09-00.dwg



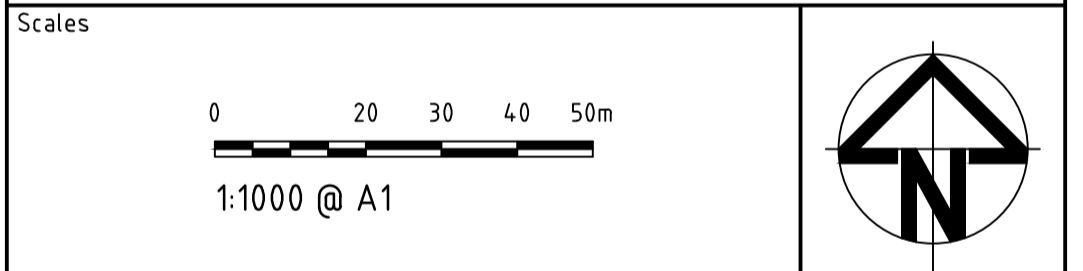
Status **NOT FOR CONSTRUCTION**

DO NOT SCALE OFF DRAWINGS. VERIFY ALL DIMENSIONS ON SITE PRIOR TO WORK.
 COPYRIGHT: The contents and information contained in this document are copyright of Sellick Consultants. Use or copy of this document in whole or part without written permission constitutes an infringement of copyright.

Rev	Description	Date	Drawn By
T	EDP SUBMISSION	31.07.2023	MN
S	EDP SUBMISSION	10.07.2023	MN
R	EDP SUBMISSION	22.06.2023	RT
Q	EDP SUBMISSION	16.06.2023	RT
P	EDP DRAFT REVIEW	14.06.2023	RT
O	EIS COMMENTS ADDRESSED	19.10.2022	RT
N	EIS COMMENTS ADDRESSED	11.10.2022	RT

LEGEND

	HOLDING LEASE BOUNDARY
	PROPOSED BLOCK BOUNDARY
	EXISTING TREE TO BE REMOVED
	EXISTING TREE TO BE RETAINED
	PROPOSED CONTOUR
	EXISTING CONTOUR
	CATCHMENT BOUNDARY
	STORMWATER MANHOLE, SUMP
	STORMWATER PIPE
	STORMWATER MAIN TO BE DISCONNECTED
	OVERLAND FLOW PATH FROM BLOCKS
	OVERLAND FLOW PATH WITHIN ROADS/PATHS
	WATER QUALITY DEVICE
	LOW POINT
	HIGH POINT
	1% AEP (100Y) FLOOD LEVEL
	NODE NUMBER



FLOW ANALYSIS							
NODE	LOCAL CATCHMENT m ²	TOTAL UPSTREAM CATCHMENT m ²	FLOW (20% AEP) (L/s)	PIPE SIZE (mm)	PIPE CAPACITY	FLOW (1% AEP) (L/s)	GAP FLOW (L/s)
A	16,279	105,833	2593	1050	3231	5133	1902
B	23,161	89,554	2194	900	2162	4343	2181
C	13,503	44,208	1083	750	1344	2144	800
D	11,536	11,536	283	450	354	354	0
E	19,169	30,705	752	600	750	1489	739
F	11,854	11,854	1374	825	1723	2719	996
G	19,142	19,142	469	525	529	928	399
H	10,331	66,393	1627	825	1723	3220	1479

Original Size	A1	Drawn By	DA	Drafting Check	DCA
Date Plotted	31-Jul-23	Designed By	AE	Design Check	BC
Coordinate System	STROMLO GRID	Approved	BC	Approved Date	16/12/2019
Height Datum	AHD	Approved Signature			
Project Name and Location					
THE CANBERRA BRICKWORKS					
BLOCKS 1,7 & 20 SECTION 102					
Drawing Title					
EDP					
STORMWATER MASTER PLAN OVERALL					
Project Number	Type	Discipline	Drg No.	Sub-No.	Rev
191148	DRG	CIV	09	00	T