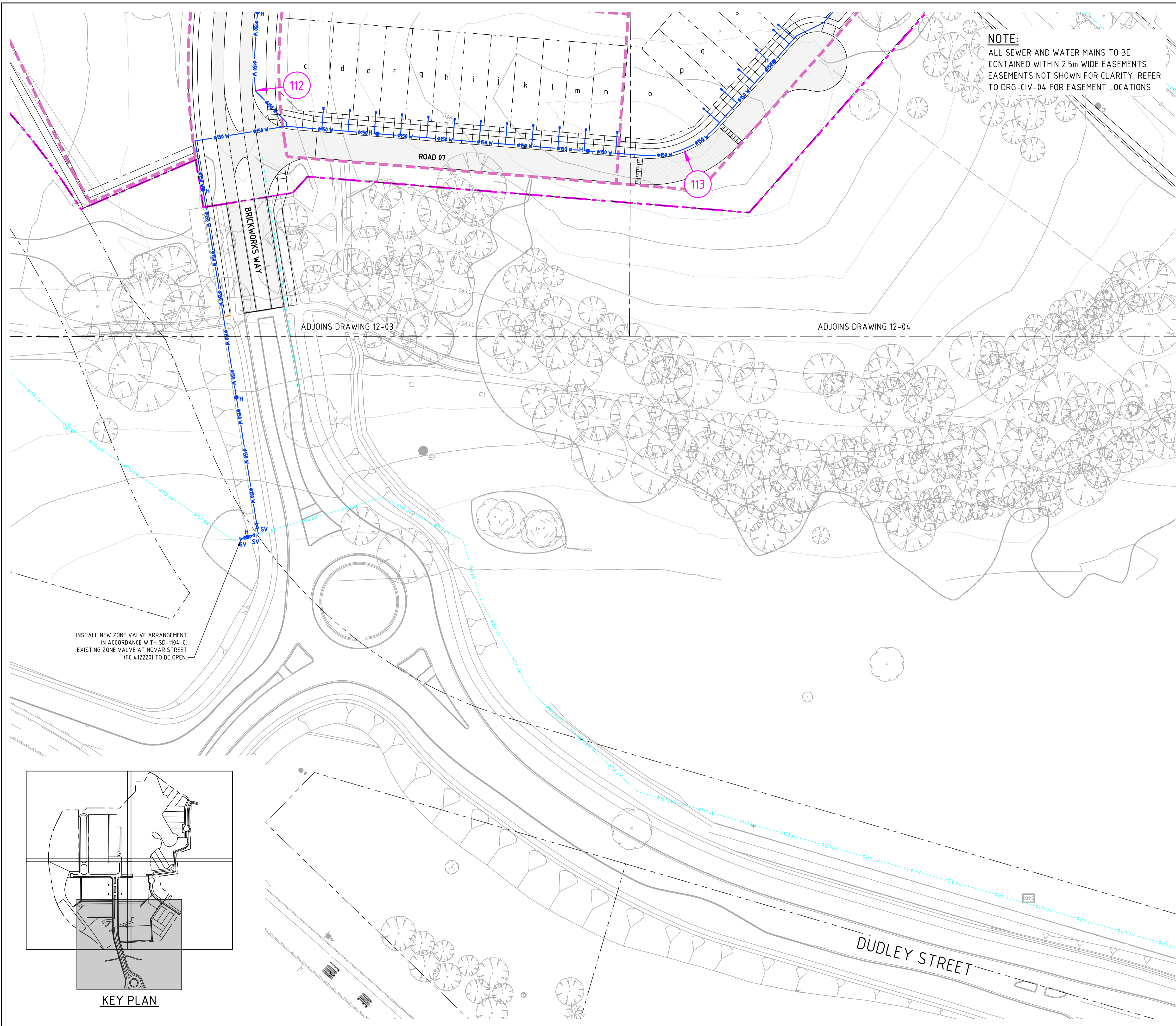


File Name: P:\2019\191148\_Yarralumla-Brickworks\04\_CAD\2\_Drawings\CIV\EDP\191148-drg-civ-12-05.dwg



**NOTE:**  
ALL SEWER AND WATER MAINS TO BE CONTAINED WITHIN 2.5m WIDE EASEMENTS  
EASEMENTS NOT SHOWN FOR CLARITY. REFER TO DRG-CIV-04 FOR EASEMENT LOCATIONS

Status **NOT FOR CONSTRUCTION**

DO NOT SCALE OFF DRAWINGS. VERIFY ALL DIMENSIONS ON SITE PRIOR TO WORK.  
COPYRIGHT: The contents and information contained in this document are copyright of Sellick Consultants. Use or copy of this document in whole or part without written permission constitutes an infringement of copyright.

Rev	Description	Date	Drawn By
T	EDP SUBMISSION	31.07.2023	MN
S	EDP SUBMISSION	10.07.2023	MN
R	EDP SUBMISSION	22.06.2023	RT
Q	EDP SUBMISSION	16.06.2023	RT
P	EDP DRAFT REVIEW	14.06.2023	RT
O	EIS COMMENTS ADDRESSED	11.10.2022	RT
N	EDP SUBMISSION	20.07.2022	RT

**LEGEND**

	LEASE BOUNDARY
	PROPOSED BLOCK BOUNDARY
	EXISTING TREE TO RETAINED
	PROPOSED CONTOUR
	EXISTING CONTOUR
	CATCHMENT NODE
	SUPPLY AREA BOUNDARY
	STOP VALVE, METER, HYDRANT
	STOP COCK
	PROPOSED WATER MAIN
	EXISTING WATER MAIN
	WATER MAIN TO BE DISCONNECTED AND EXHUMED

Scales

1:500 @ A1



Original Size	A1	Drawn By	DA	Drafting Check	DCA
Date Plotted	31-Jul-23	Designed By	AE	Design Check	BC
Coordinate System	STROMLO GRID	Approved	BC	Approved Date	16/12/2019
Height Datum	AHD	Approved Signature			

Project Name and Location

**THE CANBERRA BRICKWORKS**  
BLOCKS 1,7 & 20 SECTION 102

Drawing Title

**EDP - WATER MASTER PLAN**  
**SHEET 5**

Project Number	Type	Discipline	Drg No.	Sub-No.	Rev
191148	DRG	CIV	12	05	T

INSTALL NEW ZONE VALVE ARRANGEMENT  
IN ACCORDANCE WITH SD-1104-C.  
EXISTING ZONE VALVE AT NOVAR STREET  
(FC 4.12220) TO BE OPEN.

