

WILLIAM HOVELL DRIVE

ENGINEERING SURVEY

LEGEND

	COMMUNICATION-MANHOLE - PMG
	COMMUNICATION-MARKER POST
	COMMUNICATION-PIT
	ELECTRICITY-MANHOLE
	ELECTRICITY-MINI PILLAR
	ELECTRICITY-PIT
	ELECTRICITY-POLE
	ELECTRICITY-POLE & LIGHT
	ELECTRICITY-STREET LIGHT
	GAS-MARKER POST
	GAS-MARKER SIGN
	MINOR STRUCTURE-BOLLARD
	MINOR STRUCTURE-GATE
	MINOR STRUCTURE-LETTER BOX
	ROAD-GUIDE POST
	ROAD-SIGNAL CONTROL BOX
	ROAD-SIGNAL LIGHT
	ROAD-SIGNAL MANHOLE
	SEWERAGE-MANHOLE
	SIGNAGE-FIVE POST
	SIGNAGE-FOUR POST
	SIGNAGE-ONE POST
	SIGNAGE-THREE POST
	SIGNAGE-TWO POST
	STORM WATER-GRATED PIT
	STORM WATER-MANHOLE
	STORM WATER-SUBSOIL
	STORM WATER-SUMP
	STORM WATER-WATER COURSE
	TRAFFIC-ARROW R
	TRAFFIC-ARROW ST
	TRAFFIC-ARROW ST & L
	TRAFFIC-ARROW ST & R
	TRAFFIC-LINE BARRIER (B5)
	TRAFFIC-SYMBOL BICYCLE
	VEGETATION-SHRUB
	VEGETATION-TREE
	WATER SERVICE-HYDRANT
	WATER SERVICE-STOP COCK
	WATER SERVICE-STOP VALVE
	COMMUNICATION-LINE U/G
	COMMUNICATION-LINE A/G
	ELECTRICITY-LINE A/G
	ELECTRICITY-LINE U/G
	MINOR STRUCTURE-FENCE
	MINOR STRUCTURE-GATE
	MINOR STRUCTURE-LOG BARRIER
	ROAD-GUARD RAIL
	ROAD-KERB BACK
	ROAD-KERB INVERT
	ROAD-KERB LIP
	ROAD-KERB TOP
	ROAD-SIGNAL DETECTOR
	ROAD-TRACK
	SEWERAGE-U/G
	STORM WATER-PIPE U/G
	STORM WATER-SPOON DRAIN
	STORM WATER-WATER COURSE
	TOPOGRAPHIC-BOTTOM OF BANK
	TOPOGRAPHIC-TOP OF BANK
	TRAFFIC-LINE BARRIER (B1)
	TRAFFIC-LINE BARRIER (B2)
	TRAFFIC-LINE BARRIER (B5)
	TRAFFIC-LINE BARRIER (B6)
	TRAFFIC-LINE CHEVRON WHITE
	TRAFFIC-LINE CONTINUITY (C1)
	TRAFFIC-LINE CONTINUITY (C3)
	TRAFFIC-LINE DASHED
	TRAFFIC-LINE EDGE (E1)
	TRAFFIC-LINE EDGE (E3)
	TRAFFIC-LINE HOLD (H1)
	TRAFFIC-LINE LANE (L1)
	TRAFFIC-LINE MERGE (M1)
	TRAFFIC-LINE MERGE (M2)
	TRAFFIC-LINE SEPERATION (S1-12)
	TRAFFIC-LINE SEPERATION (S1-24)
	TRAFFIC-LINE SOLID
	TRAFFIC-LINE STOP (SL1)
	TRAFFIC-LINE STOP (SL2)
	VEGETATION-DRIPLINE
	WATER SERVICE-PIPE U/G

NOTES:

- INFORMATION ON THIS PLAN IS LIMITED TO THAT REQUESTED BY THE CLIENT, IS INTENDED FOR THE USE OF THE CLIENT AND SHOULD NOT BE USED FOR ANY OTHER PURPOSE.
- BOUNDARY INFORMATION SHOWN IS FROM ACTMAP DIGITAL DATABASE. NO BOUNDARY INVESTIGATION / MARKING HAS BEEN UNDERTAKEN.
- TREES ARE NOT GEOMETRIC FIGURES, AS SUCH, THEIR POSITIONS, SHAPES, SIZES AND HEIGHTS AS DEPICTED BY SYMBOLS ON THIS DRAWING ARE INDICATIVE ONLY. ATTRIBUTE INFORMATION, IF SHOWN TABLED, IS INTENDED FOR THE ASSESSMENT OF THE ACT TREE PROTECTION ACT 2005.
- UNDERGROUND SERVICES HAVE NOT BEEN LOCATED BY STEGER & ASSOCIATES. RELEVANT AUTHORITIES SHOULD BE CONTACTED FOR THE LOCATION OF UNDERGROUND SERVICES PRIOR TO DESIGN & CONSTRUCTION.
- ANY UNDERGROUND SERVICE CONNECTION, IF SHOWN, SHOULD BE CONSIDERED DIAGRAMMATIC ONLY EXCEPT FOR VISIBLE FEATURES LOCATED BY SURVEY INCLUDING MARKERS, PLAQUES, PITS, MANHOLES, etc.
- STEGER & ASSOCIATES CANNOT GUARANTEE THAT ALL SERVICES PRESENT HAVE BEEN LOCATED.
- DIMENSIONAL INFORMATION SHOULD NOT BE EXTRACTED FROM DIGITAL ELEMENTS.
- IMAGERY IF SHOWN FROM WWW.ACTMAP.ACT.GOV.AU ©ACT GOVERNMENT.
- SURVEY OF WILLIAM HOVELL DRIVE HAS BEEN PROVIDED BY OTHERS, STEGER & ASSOCIATES CANNOT TAKE ANY RESPONSIBILITY FOR THE ACCURACY OR CURRENCY OF THIS INFORMATION.
- UNDERLYING SURVEY SHOWN IN GREY ARE SURVEYS BY OTHERS

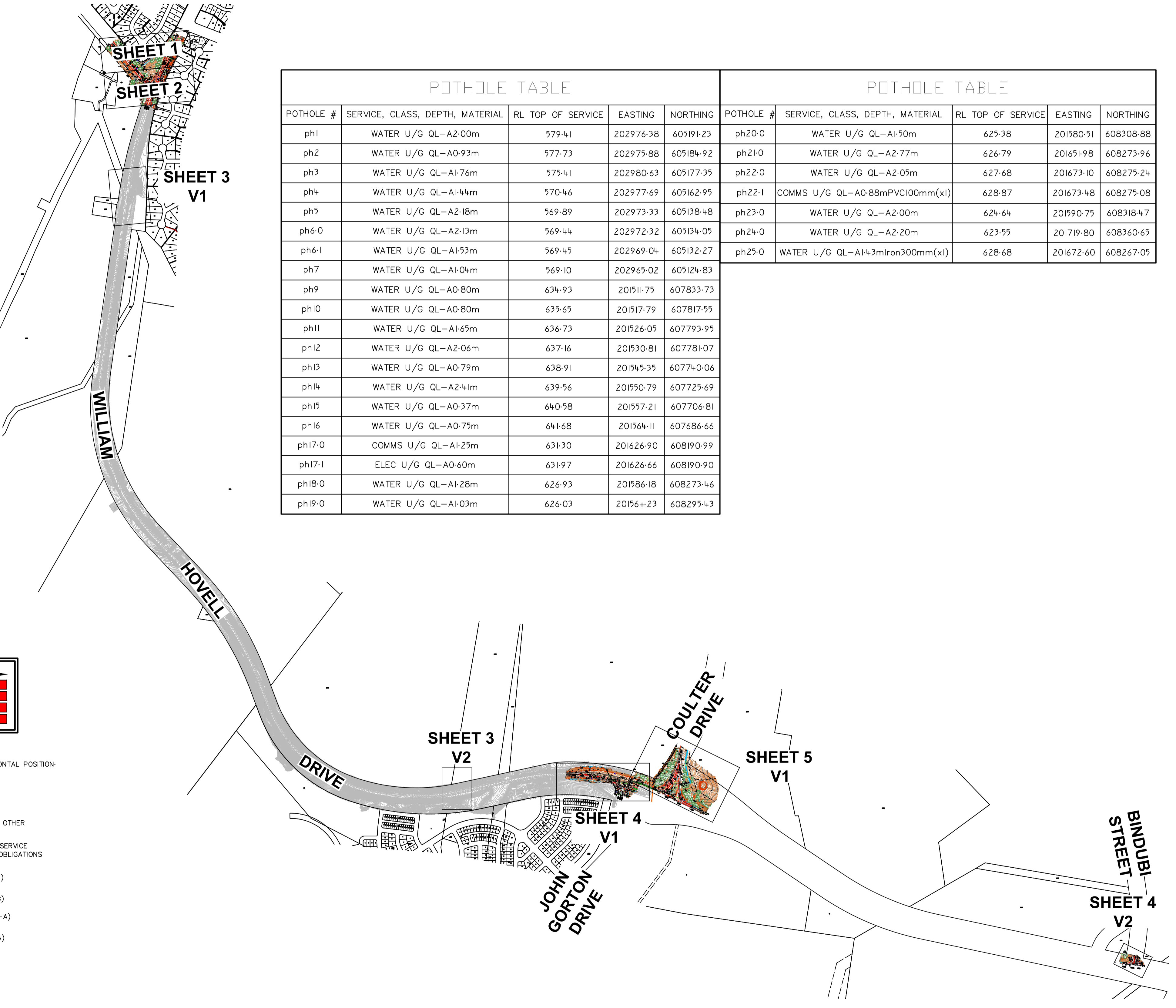


AS 5488 SUI - UG SERVICES CLASSIFICATION		CERTAINTY / RISK	
(QL-A) VALIDATED	- DIRECTLY MEASURED TO SERVICE	(QL-A)	High Certainty / Low Risk
(QL-B) TRACED	- ELECTRONICALLY DETECTED SERVICE	(QL-B)	Medium Certainty / Medium Risk
(QL-C) ALIGNED	- SURFACE JOINED SERVICE MARKERS	(QL-C)	Low Certainty / High Risk
(QL-D) COMPILED	- ESTIMATED SERVICE FROM DIAGRAMS	(QL-D)	Very Low Certainty / Very High Risk

WARNING

- CLASSIFICATION CHART IS PROVIDED TO INDICATE CERTAINTY OF IDENTIFIED SERVICE SHOWN OR LOCATED.
- REFER TO "AS 5488" FOR CLASSIFICATION DEFINITIONS OF SUBSURFACE UTILITY INFORMATION.
- SERVICES SHOWN CLASS "QL-B", "QL-C" OR "QL-D" MAY BE INACCURATE IN BOTH VERTICAL AND HORIZONTAL POSITION.
- SERVICES SHOWN: "QL-A++" INCLUDE ABSOLUTE ACCURACY OF HORIZ/VERT +/- 50mm/10mm
- SERVICES SHOWN: "QL-A+" INCLUDE ABSOLUTE ACCURACY OF HORIZ/VERT +/- 50mm/20mm
- SERVICES SHOWN: "QL-A" INCLUDE ABSOLUTE ACCURACY OF HORIZ/VERT +/- 50mm/50mm
- SERVICES SHOWN: "QL-B" INCLUDE RELATIVE ACCURACY OF HORIZ/VERT +/- 300mm/500mm
- SERVICES SHOWN: "QL-C" INCLUDE RELATIVE ACCURACY OF HORIZ/VERT +/- 300mm/ NILL
- SERVICES SHOWN: "QL-D" INCLUDE RELATIVE ACCURACY OF HORIZ/VERT +/- NILL/NILL
- MULTIPLE SERVICES MAY STILL EXIST IN SINGLE TRENCH, THEREFORE, SERVICES SHOWN MAY NOT REFLECT OTHER SERVICES ABOVE OR BELOW.
- SINGLE LINES SHOWN MAY NOT REPRESENT MULTIPLE CONDUITS, PIPES OR CABLES OF SERVICES LOCATED.
- UNKNOWN SERVICES MAY STILL EXIST THAT COULD NOT BE ELECTRONICALLY DETECTED. PLEASE CONSULT SERVICE PROVIDERS DIAGRAMS OR CALL "DIAL-BEFORE-YOU-DIG" SERVICE PROVIDER TO IDENTIFY DUTY OF CARE OBLIGATIONS PRIOR TO ANY EXCAVATION/CONSTRUCTION.

	LINE - DENOTES TRACED ELECTRONICALLY UNDERGROUND SERVICE (QL-B)
	POINT - DENOTES TRACED SURVEY POINT AT RL GROUND LEVEL (QL-B)
	LINE - DENOTES TRACED ELECTRONICALLY UNDERGROUND SERVICE (QL-B)
	POINT - DENOTES TRACED SURVEY POINT AT GROUND LEVEL (QL-B)
	POTHOLE - DENOTES VALIDATED SURVEY POINT AT RL TOP-OF-SERVICE (QL-A)
	LINE - DENOTES EXPOSED & CONFIRMED UNDERGROUND SERVICE (QL-A)
	WAE - DENOTES SURVEY CAPTURED WAE AT RL TOP-OF-SERVICE (QL-A) WITH ATTRIBUTE TAG (CLASS/DEPTH/MATERIAL/DIAMETER/QT)



POTHOLE TABLE					POTHOLE TABLE				
POTHOLE #	SERVICE, CLASS, DEPTH, MATERIAL	RL TOP OF SERVICE	EASTING	NORTHING	POTHOLE #	SERVICE, CLASS, DEPTH, MATERIAL	RL TOP OF SERVICE	EASTING	NORTHING
ph1	WATER U/G QL-A2-00m	579.41	202976.38	605191.23	ph20-0	WATER U/G QL-A1-50m	625.38	201580.51	608308.88
ph2	WATER U/G QL-A0-93m	577.73	202975.88	605184.92	ph21-0	WATER U/G QL-A2-77m	626.79	201651.98	608273.96
ph3	WATER U/G QL-A1-76m	575.41	202980.63	605177.35	ph22-0	WATER U/G QL-A2-05m	627.68	201673.10	608275.24
ph4	WATER U/G QL-A1-44m	570.46	202977.69	605162.95	ph22-1	COMMS U/G QL-A0-88mPVC100mm(x1)	628.87	201673.48	608275.08
ph5	WATER U/G QL-A2-18m	569.89	202973.33	605138.48	ph23-0	WATER U/G QL-A2-00m	624.64	201590.75	608318.47
ph6-0	WATER U/G QL-A2-13m	569.44	202972.32	605134.05	ph24-0	WATER U/G QL-A2-20m	623.55	201719.80	608360.65
ph6-1	WATER U/G QL-A1-53m	569.45	202969.04	605132.27	ph25-0	WATER U/G QL-A1-43miron300mm(x1)	628.68	201672.60	608267.05
ph7	WATER U/G QL-A1-04m	569.10	202965.02	605124.83					
ph9	WATER U/G QL-A0-80m	634.93	201511.75	607833.73					
ph10	WATER U/G QL-A0-80m	635.65	201517.79	607817.55					
ph11	WATER U/G QL-A1-65m	636.73	201526.05	607793.95					
ph12	WATER U/G QL-A2-06m	637.16	201530.81	607781.07					
ph13	WATER U/G QL-A0-79m	638.91	201545.35	607740.06					
ph14	WATER U/G QL-A2-41m	639.56	201550.79	607725.69					
ph15	WATER U/G QL-A0-37m	640.58	201557.21	607706.81					
ph16	WATER U/G QL-A0-75m	641.68	201564.11	607686.66					
ph17-0	COMMS U/G QL-A1-25m	631.30	201626.90	608190.99					
ph17-1	ELEC U/G QL-A0-60m	631.97	201626.66	608190.90					
ph18-0	WATER U/G QL-A1-28m	626.93	201586.18	608273.46					
ph19-0	WATER U/G QL-A1-03m	626.03	201564.23	608295.43					

AMENDMENTS	SURVEY	DRAWN	CHECK	APPROVED	DATE	ISSUE
A	M/W/J	SG	WJ	JS	07/04/20	15/04/20
B						
C						
D						
E						

Notes:
 TREE TABLE ON SHEET 6
 UNDERLYING SURVEY SHOWN IN GREY ARE SURVEYS BY OTHERS

Surveyor Registered Under the ACT Surveyors Act 2007

Prepared By:

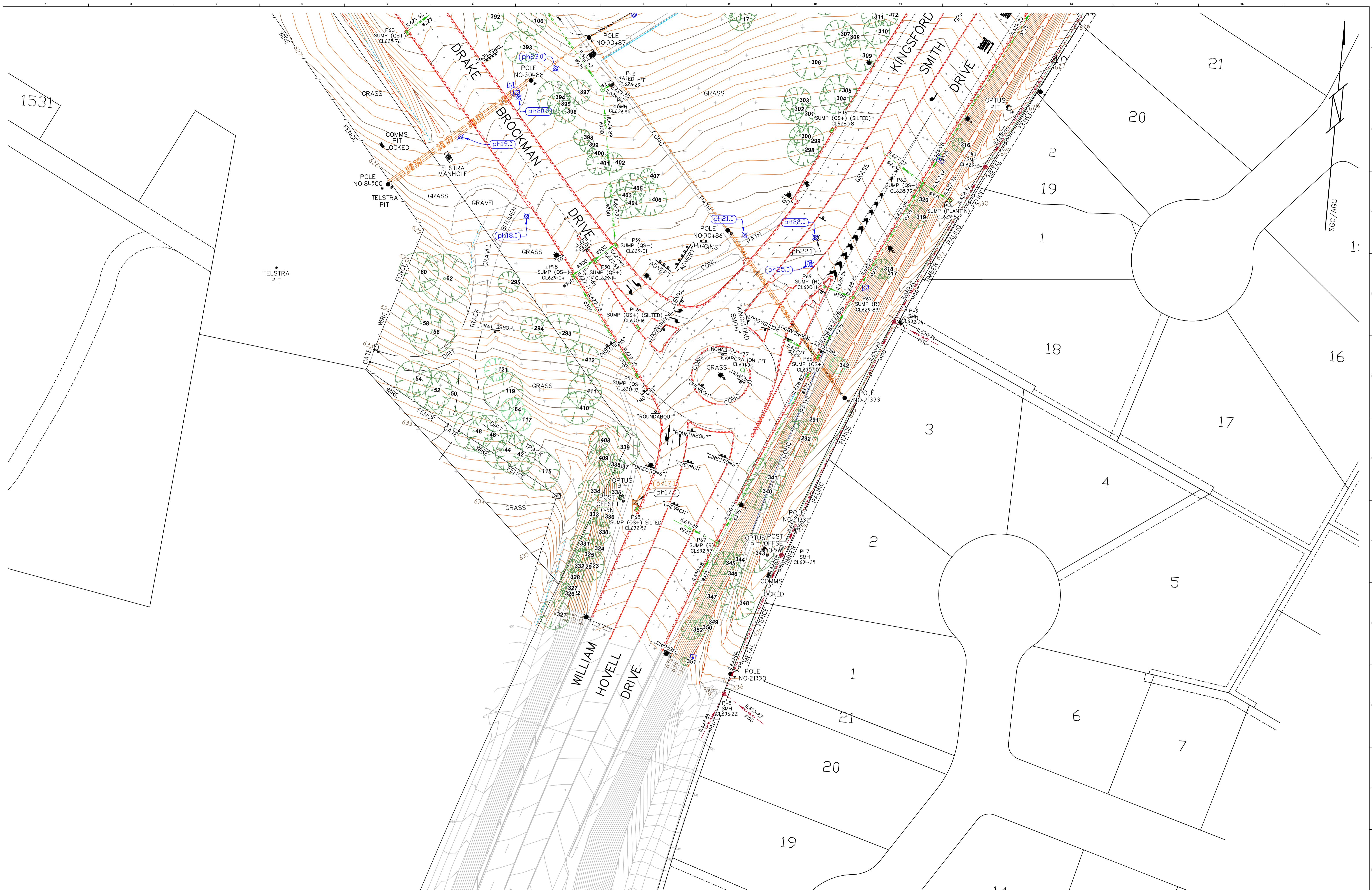
 registered land surveyors

Client:

 SUN MICRO BUILDING
 SUITE 2 LEVEL 1
 243 NORTHBOURNE AVENUE
 LYNEHAM ACT 2602

Horizontal Datum: SGC/AGC
 Vertical Datum: SR1165
 MARK: RL619.539
 LEVEL: AHD 71
 SYSTEM: AHD 71
 Contour Interval: 0.20m

Title: **ENGINEERING SURVEY**
 DIVISION: HIGGINS, HAWKER
 DISTRICT: BELCONNEN
 Job: 20003
 Scale (metres): 1:500
 Sheet: 0 of 6
 Drawing: 20003_001.dwg



ORIGINAL ISSUE	SURVEY	DRM	CHK	APPROV	ZONE	SURVEY	ISSUE
A	MW	WJ	JS			07/04/20	15/04/20
B							
C							
D							
E							

Notes:
 TREE TABLE ON SHEET 6
 UNDERLYING SURVEY SHOWN IN GREY ARE SURVEYS BY OTHERS

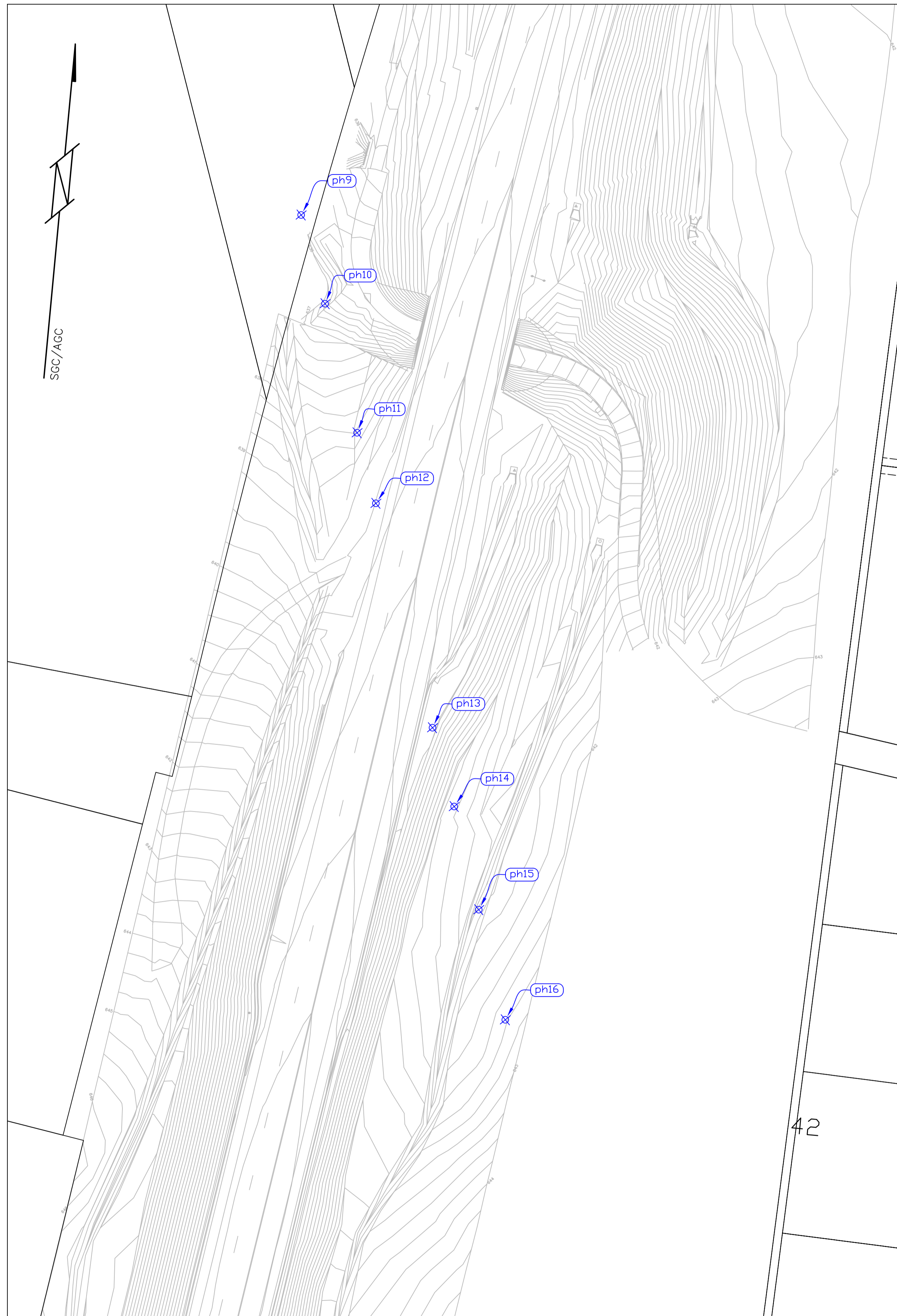
Prepared By: **STEGEER & ASSOCIATES**
 Unit 2, 10 Kett Street
 KAMBAH ACT 2902
 PO Box 2001
 KAMBAH ACT 2902
 P - (02) 6296 4089
 F - (02) 6296 4090
 enquiries@steger.com.au
 www.steger.com.au
 ABN 12 920 463 267

Client: **SMC**
 SUN MICRO BUILDING
 SUITE 2 LEVEL 1
 243 NORTHBOURNE AVENUE
 LYNEHAM ACT 2602

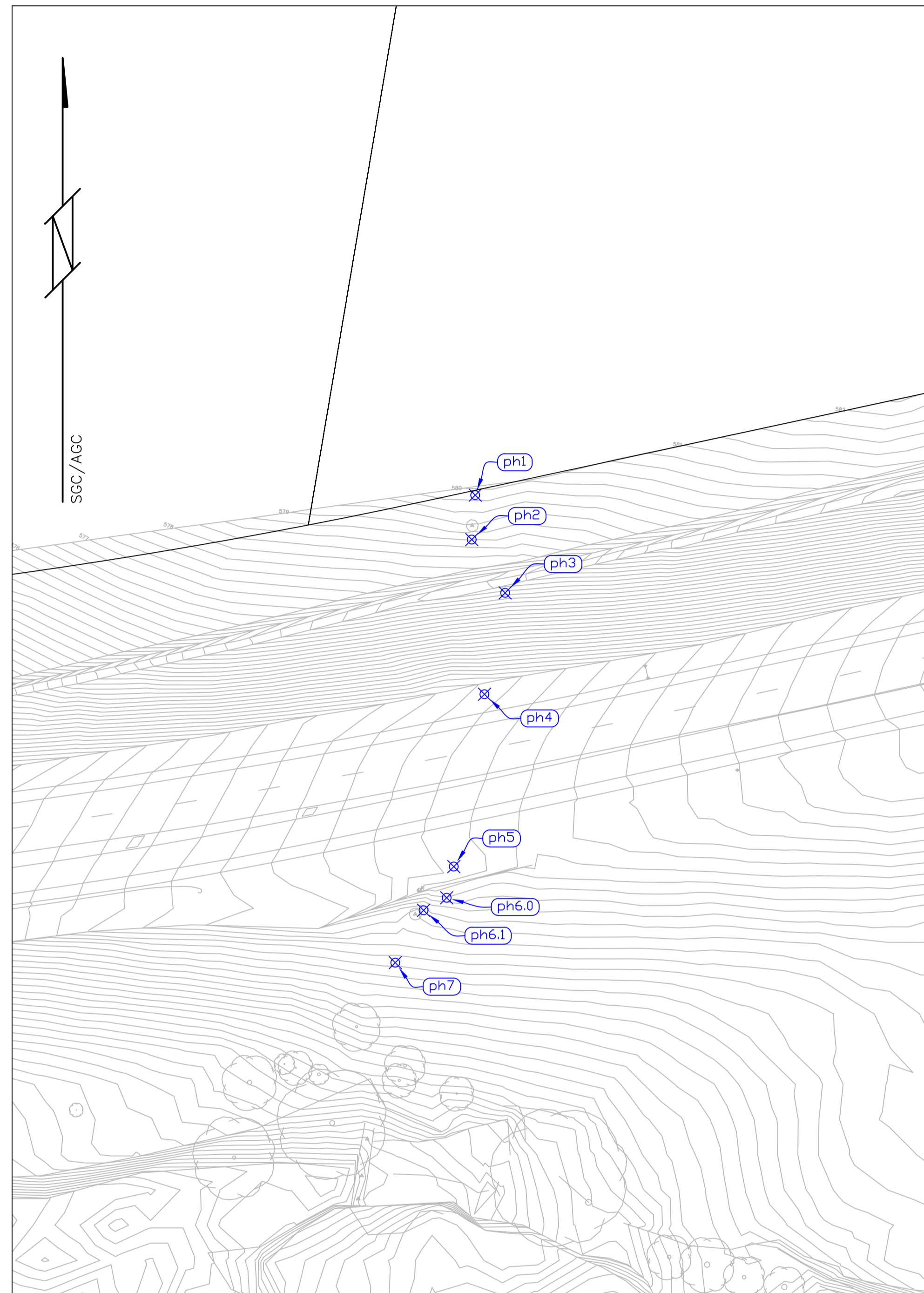
Horizontal Datum: SGC/AGC
 Vertical Datum: SR1165
 MARK: RL619.539
 LEVEL: AHD 71
 SYSTEM: AHD 71
 Contour Interval: 0.20m

Title: **ENGINEERING SURVEY**
 DIVISION: HIGGINS, HAWKER
 DISTRICT: BELCONNEN
 Job: 20003
 Scale (metres): 1:500
 Sheet: 2 of 6
 Size: A1
 Drawing: 20003_001.dwg

S3V1




S3V2



AMENDMENTS	ORIGINAL ISSUE	SURVEY	DRAWN	CHECK	APPROVED	DATE	ISSUE
A	M/W/J	SG	WJ	JS	07/04/20	15/04/20	
B							
C							
D							
E							

Notes:
 TREE TABLE ON SHEET 6
 UNDERLYING SURVEY SHOWN IN GREY ARE SURVEYS BY OTHERS

Prepared By:

STEGER & ASSOCIATES
 registered land surveyors
 Unit 2, 10 Kett Street
 KAMBAH ACT 2602
 PO Box 2001
 KAMBAH ACT 2602
 P - (02) 6296 4089
 F - (02) 6296 4090
 enquiries@steger.com.au
 www.steger.com.au
 ABN 12 920 463 267

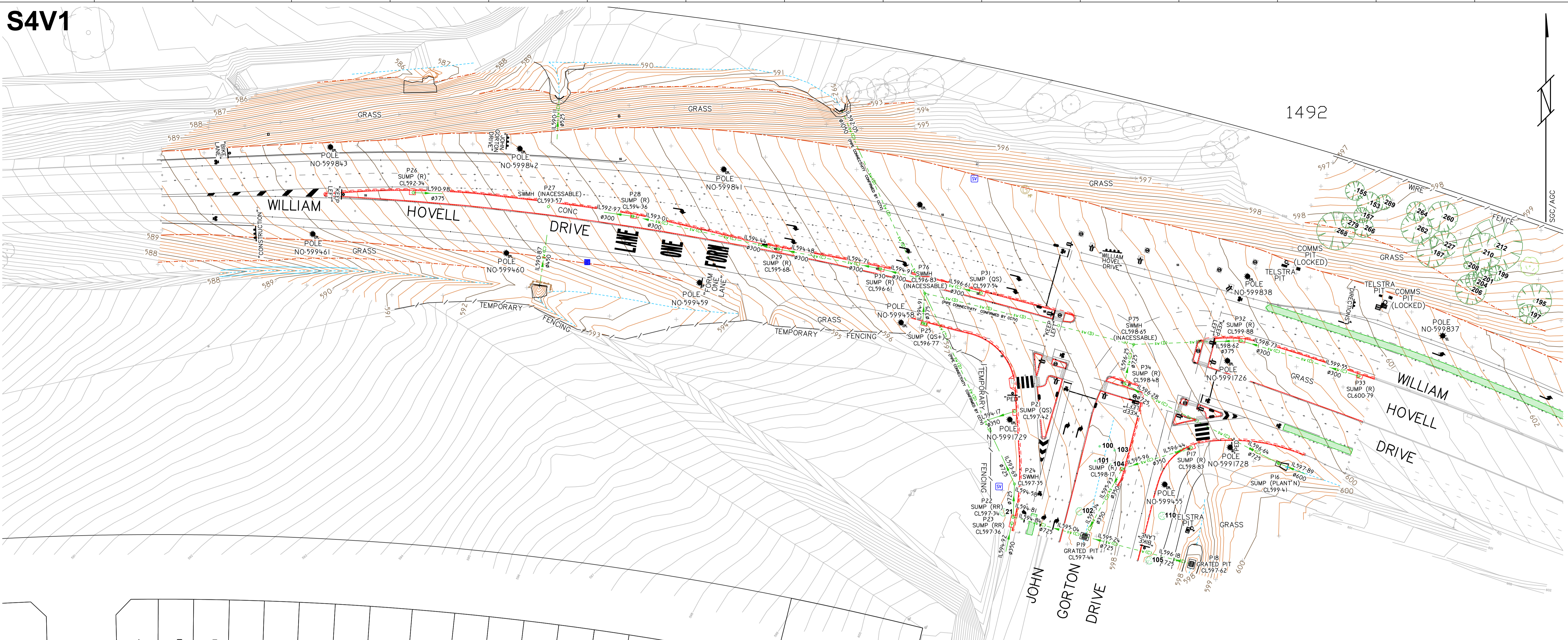
Client:

SUN MICRO BUILDING
 SUITE 2 LEVEL 1
 243 NORTHBOURNE AVENUE
 LYNEHAM ACT 2602

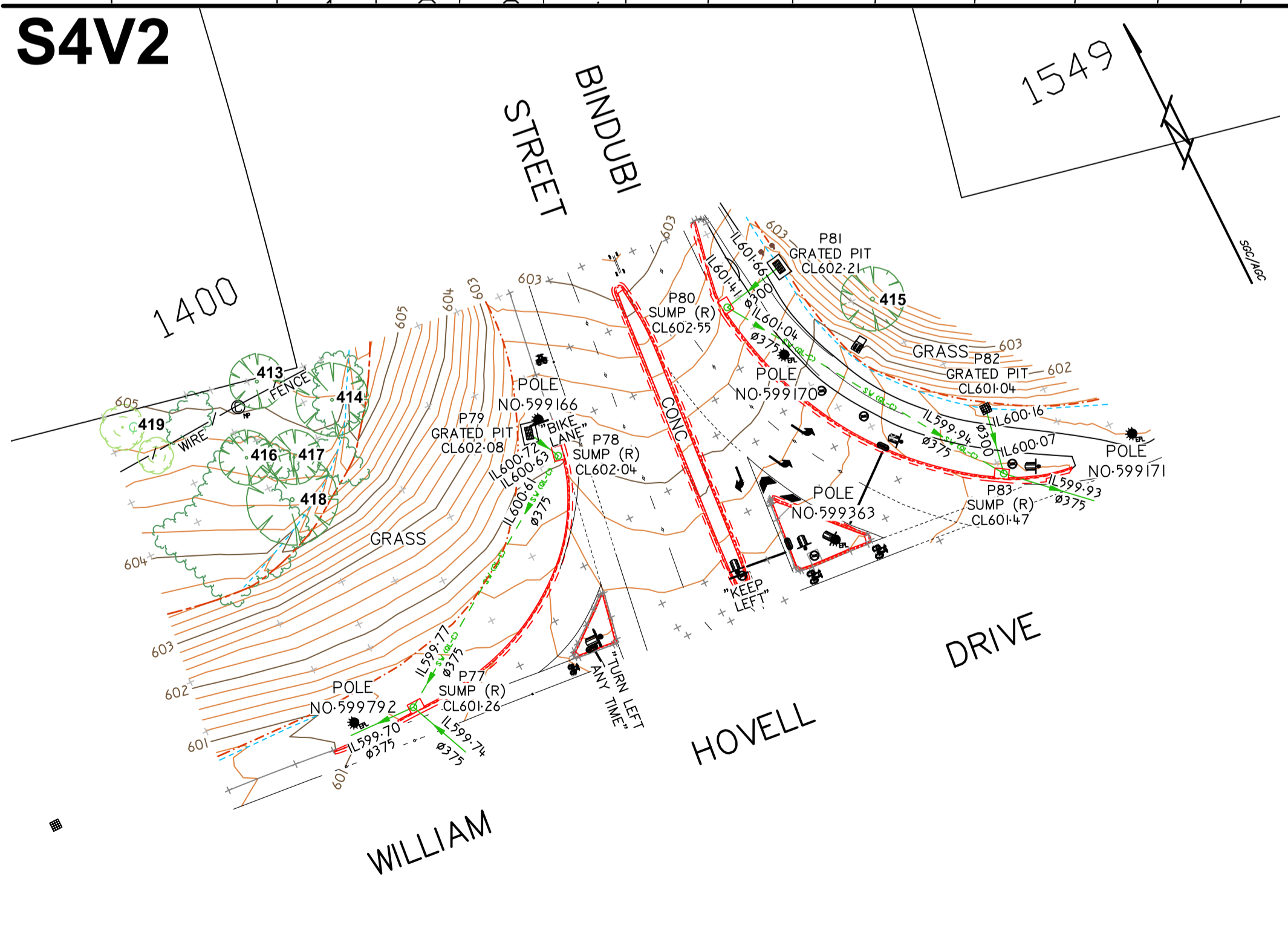
Horizontal Datum: SGC/AGC
 Vertical Datum: SR1165
 MARK: RL619.539
 SYSTEM: AHD 71
 Contour Interval: 0.20m

Title: **ENGINEERING SURVEY**
 DIVISION: HIGGINS, HAWKER
 DISTRICT: BELCONNEN
 Job: 20003
 Scale (metres): 1:500
 Sheet: 3 of 6
 Size: A1
 Drawing: 20003_001.dwg

S4V1



S4V2



AMENDMENTS	SURVEY	DRAWN	CHECK	APPROVED	ZONE	SURVEY	ISSUE
A	MVWJ	SG	WJ	JS		07/04/20	15/04/20
B							
C							
D							
E							

Notes:
 TREE TABLE ON SHEET 6
 UNDERLYING SURVEY SHOWN IN GREY ARE SURVEYS BY OTHERS

Prepared By: **STEEGER & ASSOCIATES**
 Unit 2, 10 Kett Street
 KAMBAH ACT 2902
 PO Box 2001
 KAMBAH ACT 2902
 P - (02) 6296 4089
 F - (02) 6296 4090
 enquiries@steger.com.au
 www.steger.com.au
 ABN 12 920 463 287

Client: **SMC**
 SUN MICRO BUILDING
 SUITE 2 LEVEL 1
 243 NORTHBOURNE AVENUE
 LYNEHAM ACT 2602

Horizontal Datum: **SGC/AGC**
 Vertical Datum: **SGC/AGC**
 Level: **SR1165**
 Mark: **RL619.539**
 System: **AHD 71**
 Contour Interval: **0.20m**

Title: **ENGINEERING SURVEY**
 Division: **HIGGINS, HAWKER**
 District: **BELCONNEN**
 Job: **20003**
 Scale (metres): 1:500 0 2.5 5 10 15
 Sheet: **4** of 6
 Drawing: **20003_001.dwg**

Tree No.	Easting	Northing	Trunk Dia.(m)	Canopy Dia.(m)	Type	Height.(m)	No.Trunks	Tree No.	Easting	Northing	Trunk Dia.(m)	Canopy Dia.(m)	Type	Height.(m)	No.Trunks	Tree No.	Easting	Northing	Trunk Dia.(m)	Canopy Dia.(m)	Type	Height.(m)	No.Trunks	Tree No.	Easting	Northing	Trunk Dia.(m)	Canopy Dia.(m)	Type	Height.(m)	No.Trunks					
1	201662.43	608353.34	0.29	7.0	EUCALYPT	12.0	1	106	201582.19	608332.12	0.41	9.0	EUCALYPT	13.2	1	211	203885.12	605207.78	0.30	7.0	EUCALYPT	11.0	1	316	201713.45	608307.02	0.20	4.0	1	1	201713.45	608307.02	0.20	4.0	1	1
2	203983.19	605181.09	0.32	13.0	EUCALYPT	7.5	2	107	201578.56	608341.23	0.25	5.0	EUCALYPT	9.0	1	212	203799.69	605217.00	0.75	14.0	EUCALYPT	7.5	3	317	201695.20	608266.49	0.44	3.5	1	2	201695.20	608266.49	0.44	3.5	1	2
3	201666.31	608354.71	0.20	5.0	EUCALYPT	11.0	1	108	201574.46	608341.23	0.26	6.0	EUCALYPT	10.5	1	213	203876.04	605206.00	0.19	5.0	EUCALYPT	8.0	1	318	201693.94	608267.77	0.44	6.0	1	3	201693.94	608267.77	0.44	6.0	1	3
4	203971.06	605178.71	0.45	14.0	EUCALYPT	11.0	1	109	201567.97	608348.88	0.23	5.0	EUCALYPT	8.7	1	214	203870.62	605209.56	0.23	5.0	EUCALYPT	9.0	2	319	201702.25	608284.19	0.51	7.0	1	4	201702.25	608284.19	0.51	7.0	1	4
5	201666.34	608347.72	0.27	6.0	EUCALYPT	11.5	1	110	203712.97	605147.60	0.03	2.0	SAPLING	-	-	215	203941.12	605329.69	0.50	8.0	DEAD	8.0	2	320	201703.15	608290.95	0.34	4.5	1	5	201703.15	608290.95	0.34	4.5	1	5
6	203963.05	605174.71	0.30	7.0	EUCALYPT	7.4	1	111	201565.99	608351.74	0.38	8.0	EUCALYPT	14.0	1	216	203941.41	605336.54	0.20	3.0	EUCALYPT	8.0	1	321	201605.85	608155.13	0.29	9.0	1	6	201605.85	608155.13	0.29	9.0	1	6
7	201669.33	608346.55	0.31	9.0	EUCALYPT	12.5	1	112	201563.83	608353.94	0.27	5.0	EUCALYPT	14.0	1	217	203940.48	605339.46	0.26	7.0	EUCALYPT	0.0	1	322	201609.43	608162.12	0.30	4.0	1	7	201609.43	608162.12	0.30	4.0	1	7
8	203967.70	605159.18	0.39	9.0	EUCALYPT	13.9	1	113	201558.17	608355.28	0.37	9.0	EUCALYPT	13.5	1	218	203941.67	605341.84	0.25	5.0	DEAD	3.0	1	323	201614.18	608170.71	0.33	10.0	1	8	201614.18	608170.71	0.33	10.0	1	8
9	201651.23	608345.01	0.38	7.0	EUCALYPT	12.0	1	114	201553.82	608365.99	0.34	8.0	EUCALYPT	13.0	1	219	203908.24	605146.89	0.23	4.0	DEAD	5.0	1	324	201615.32	608175.97	0.19	6.0	1	9	201615.32	608175.97	0.19	6.0	1	9
10	203964.53	605156.06	0.54	13.0	EUCALYPT	9.9	1	115	201597.25	608197.62	0.38	12.0	EUCALYPT	12.9	1	220	203921.52	605149.43	0.20	5.0	EUCALYPT	5.0	1	325	201612.45	608173.87	0.22	4.0	1	10	201612.45	608173.87	0.22	4.0	1	10
11	201652.41	608347.74	0.40	8.0	EUCALYPT	13.0	1	116	201543.86	608371.62	0.23	3.0	EUCALYPT	7.6	1	221	203920.81	605150.06	0.03	2.0	EUCALYPT	2.0	1	326	201607.67	608161.64	0.27	2.0	1	11	201607.67	608161.64	0.27	2.0	1	11
12	203967.63	605148.50	0.42	11.0	EUCALYPT	12.0	1	117	201589.86	608212.48	0.50	7.0	TREE	7.5	2	222	203915.83	605153.43	0.20	4.0	DEAD	7.0	1	327	201608.44	608163.37	0.45	3.0	1	12	201608.44	608163.37	0.45	3.0	1	12
13	201649.67	608346.99	0.28	6.0	EUCALYPT	11.0	1	118	201545.88	608375.22	0.33	12.0	EUCALYPT	14.0	1	223	203919.18	605155.68	0.28	8.0	EUCALYPT	8.0	1	328	201608.85	608166.75	0.23	5.0	1	13	201608.85	608166.75	0.23	5.0	1	13
14	203970.63	605147.97	0.21	7.0	EUCALYPT	7.0	1	119	201584.09	608220.60	0.38	12.0	EUCALYPT	16.0	1	224	203924.03	605154.12	0.27	7.0	EUCALYPT	9.0	1	329	201612.06	608170.20	0.22	3.0	1	14	201612.06	608170.20	0.22	3.0	1	14
15	201645.46	608341.26	0.25	8.0	EUCALYPT	10.5	1	120	201543.75	608377.95	0.50	12.0	EUCALYPT	15.0	1	225	203923.82	605164.17	0.26	5.0	EUCALYPT	7.0	1	330	201616.09	608181.01	0.26	8.0	1	15	201616.09	608181.01	0.26	8.0	1	15
16	203978.20	605154.38	0.26	5.0	EUCALYPT	4.2	3	121	201581.30	608226.80	0.50	7.0	TREE	8.0	4	226	203921.69	605182.04	0.30	5.0	EUCALYPT	6.0	4	331	201610.79	608177.00	0.26	5.0	1	16	201610.79	608177.00	0.26	5.0	1	16
17	201644.64	608338.45	0.24	7.0	EUCALYPT	10.5	1	122	201539.72	608376.39	0.30	8.0	EUCALYPT	9.0	1	227	203926.13	605218.19	0.32	7.0	EUCALYPT	10.5	1	332	201609.82	608170.17	0.25	4.0	1	17	201609.82	608170.17	0.25	4.0	1	17
18	203976.63	605148.12	0.34	8.0	EUCALYPT	5.3	2	123	201531.76	608391.88	0.46	14.0	EUCALYPT	15.0	1	228	203904.56	605277.28	1.30	15.0	EUCALYPT	13.0	3	333	201612.74	608186.06	0.22	6.0	1	18	201612.74	608186.06	0.22	6.0	1	18
19	201642.87	608342.35	0.35	9.0	EUCALYPT	12.0	1	124	201529.55	608394.40	0.25	7.0	EUCALYPT	10.5	1	229	203864.13	605203.18	0.61	15.0	EUCALYPT	14.0	1	334	201612.48	608193.02	0.29	6.5	1	19	201612.48	608193.02	0.29	6.5	1	19
20	203971.28	605143.81	0.31	6.0	EUCALYPT	8.6	2	125	201519.28	608406.33	0.35	8.0	EUCALYPT	14.5	1	230	203854.33	605206.97	0.30	7.0	EUCALYPT	9.0	1	335	201618.81	608193.28	0.47	8.0	1	20	201618.81	608193.28	0.47	8.0	1	20
21	203671.63	605148.52	0.03	2.0	SAPLING	0.0	-	126	201513.42	608413.27	0.41	12.0	EUCALYPT	13.0	1	231	203851.81	605207.57	0.50	7.0	EUCALYPT	12.0	2	336	201617.47	608185.76	0.26	6.0	1	21	201617.47	608185.76	0.26	6.0	1	21
22	201700.08	608393.93	0.46	9.0	EUCALYPT	11.5	1	127	204026.33	605136.04	0.50	12.0	EUCALYPT	10.4	2	232	203851.73	605201.88	0.20	4.0	EUCALYPT	7.0	1	337	201620.33	608201.16	0.20	4.5	1	22	201620.33	608201.16	0.20	4.5	1	22
23	203973.75	605141.96	4.60	3.0	DEAD	8.1	3	128	201505.60	608422.94	0.42	12.0	EUCALYPT	14.5	1	233	203844.69	605205.13	0.60	8.0	EUCALYPT	3.0	10	338	201617.83	608201.52	0.30	6.5	1	23	201617.83	608201.52	0.30	6.5	1	23
24	201711.37	608408.91	0.37	10.0	EUCALYPT	10.3	1	129	204024.35	605125.85	0.23	6.0	EUCALYPT	10.5	1	234	203845.29	605197.21	0.50	9.0	EUCALYPT	8.0	2	339	201620.09	608206.97	0.55	13.0	1	24	201620.09	608206.97	0.55	13.0	1	24
25	203977.33	605142.40	0.74	6.0	EUCALYPT	4.2	6	130	201503.29	608425.40	0.42	10.0	EUCALYPT	14.5	1	235	203842.37	605190.34	0.24	3.0	DEAD	6.0	1	340	201663.94	608197.81	0.44	11.0	1	25	201663.94	608197.81	0.44	11.0	1	25
26	201719.46	608405.29	0.36	8.0	EUCALYPT	8.6	1	131	204030.63	605129.51	0.20	6.0	WATTLE	8.0	1	236	203841.60	605182.20	0.30	7.0	EUCALYPT	10.0	2	341	201665.12	608202.06	0.40	12.0	1	26	201665.12	608202.06	0.40	12.0	1	26
27	203974.94	605137.12	0.59	10.0	EUCALYPT	8.9	3	132	201498.83	608430.20	0.22	7.0	EUCALYPT	11.0	1	237	203844.44	605186.60	0.25	7.0	EUCALYPT	8.0	1	342	201683.40	608237.66	0.25	5.0	1	27	201683.40	608237.66	0.25	5.0	1	27
28	201726.51	608424.27	1.46	20.0	EUCALYPT	13.2	3	133	204032.29	605125.07	0.37	10.0	EUCALYPT	9.0	1	238	203848.15	605192.44	0.27	7.0	EUCALYPT	9.0	1	343	201663.55	608179.12	0.31	12.0	1	28	201663.55	608179.12	0.31	12.0	1	28
29	203977.70	605131.38	0.40	6.0	EUCALYPT	7.0	3	134	204046.23	605111.86	0.30	6.0	DEAD	6.5	1	239	203848.75	605180.46	0.34	9.0	EUCALYPT	10.0	2	344	201657.70	608176.65	0.30	4.0	1	29	201657.70	608176.65	0.30	4.0	1	29
30	201734.82	608448.79	0.32	8.0	EUCALYPT	10.5	1	135	204049.19	605117.21	0.32	8.0	EUCALYPT	7.9	1	240	203850.71	605187.37	0.27	7.0	EUCALYPT	8.0	1	345	201654.97	608175.27	0.35	7.0	1	30	201654.97	608175.27	0.35	7.0	1	30
31	203978.72	605135.19	0.63	8.0	EUCALYPT	11.6	2	136	204051.01	605107.47	0.33	7.0	EUCALYPT	6.5	1	241	203852.99	605188.75	0.19	5.0	EUCALYPT	6.0	1	346	201655.86	608172.19	0.27	9.5	1	31	201655.86	608172.19	0.27	9.5	1	31
32	201737.96	608440.61	0.33	7.0	EUCALYPT	10.0	1	137	204051.56	605103.34	0.32	6.0	EUCALYPT	5.0	3	242	203852.86	605194.46	0.20	7.0	EUCALYPT	8.0	1	347	201650.34	608164.72	0.29	7.0	1	32	201650.34	608164.72	0.29	7.0	1	32
33	203981.76	605134.58	0.38	7.0	EUCALYPT	5.3	3	138	204055.20	605098.80	0.30	7.0	EUCALYPT	7.0	2	243	203852.31	605197.19	0.21	7.0	EUCALYPT	7.0	1	348	201660.16	608163.75	0.33	10.0	1	33	201660.16	608163.75	0.33	10.0	1	33
34	203976.71	605130.64	0.65	9.0	EUCALYPT	8.2	3	139	204058.06	605096.70	0.28	7.0	EUCALYPT	8.0	2	244	203856.52	605190.83																		