

1420

TREE MANAGEMENT + PROTECTION NOTES

- FENCING**
- Maintain temporary protective fences erected in accordance with the approved drawing.
 - Fencing must be erected before the commencement of any site works and removed at completion of all construction and commencement of verge restoration.
 - The fence is to remain in place throughout the duration of the project.
 - Use of temporary 1800 mm tall continuous mesh fence supported by steel posts with concrete bases is mandatory.
 - Variation from this requirement must be accompanied by written agreement from the Project Arborist.
 - All construction activity including stockpiling of materials, vehicle access and parking must be excluded from the fenced area.
 - Ensure that site access points are outside all the protection zones.

WORKING INSIDE THE TREE PROTECTION ZONE
 Work inside the tree protection zone shall be conducted according to this drawing and the following controls:

- 1. ROOT PROTECTION**
 - 1.1. Excavation that occurs within the drip zone of a tree shall be restricted to one side of the tree only and shall have prior approval from the Project Arborist.
 - 1.2. Where excavation is approved, the following measures are to be adopted for tree protection: Do not sever large roots (>30 mm diameter) closer than halfway from the drip-line to the trunk.
 - 1.3. Exploratory low-pressure hydro-excavation trenching must be undertaken in structural root zone to a depth of 300mm prior to side of excavation and trenching being undertaken. Where roots >30mm are uncovered, underbore or contact the TCCS tree unit.
 - 1.4. Cut roots cleanly with equipment specifically designed for this purpose or by suitable pruning equipment.
 - 1.5. Protect exposed roots from desiccation by lightly watering or covering with hessian which must be kept moist, and maintain the good health of the trees that have had disturbance in their roots zone by continual watering.
 - 1.6. At no time shall the disturbed area be allowed to dry out to the detriment of the trees health.
- 2. ROOT DAMAGING ACTIVITIES**

Techniques to minimise damage to roots within the tree root zone will include hand excavation, under boring or hydro excavation to expose the roots. The use of these techniques within the tree root zone is mandatory.

Do not cut large roots > 30mm diameter. where roots > 30mm are uncovered, underbore or contact the TCCS tree unit. Tree roots less than 30mm in diameter that are required to be removed must be cut cleanly with pruning equipment specifically designed for this purpose.

If any trench/hole is not going to be back-filled within 24 hours, keep the roots lightly watered, cover with hessian and keep hessian moist; and where hydro excavation methods are used, water pressure must be limited so that bark surrounding roots and roots greater than 30mm diameter are not damaged;

- 3. BRANCH PROTECTION**
 On the advice of the project arborist and with written approval from Lessee of the block on which any tree is located, remove any branches that are impeding access, and trunk wrap those that are likely to be damaged during works as per Figure 4, AS 4970, or similar;

Any pruning, if required, to be in accordance with AS4373 - 2007 Pruning of Amenity Trees and is to be carried out by a qualified, experienced, practicing arborist/tree surgeon who is a member of Arboriculture Australia;

- 4. EXCAVATION WITHIN THE TPZ**
 Excavation for structures, services and any other enabling works shall be carried out strictly by hydro-excavation using minimal pressure with no over-excavation towards the tree side of the works.

All exposed roots are to be cleanly cut by a qualified arborist and root pruning is to be inspected by the consulting arborist before the footings are put in place.

Contractor shall organise for Arborist to be present at time of excavation to monitor tree root presence & management.

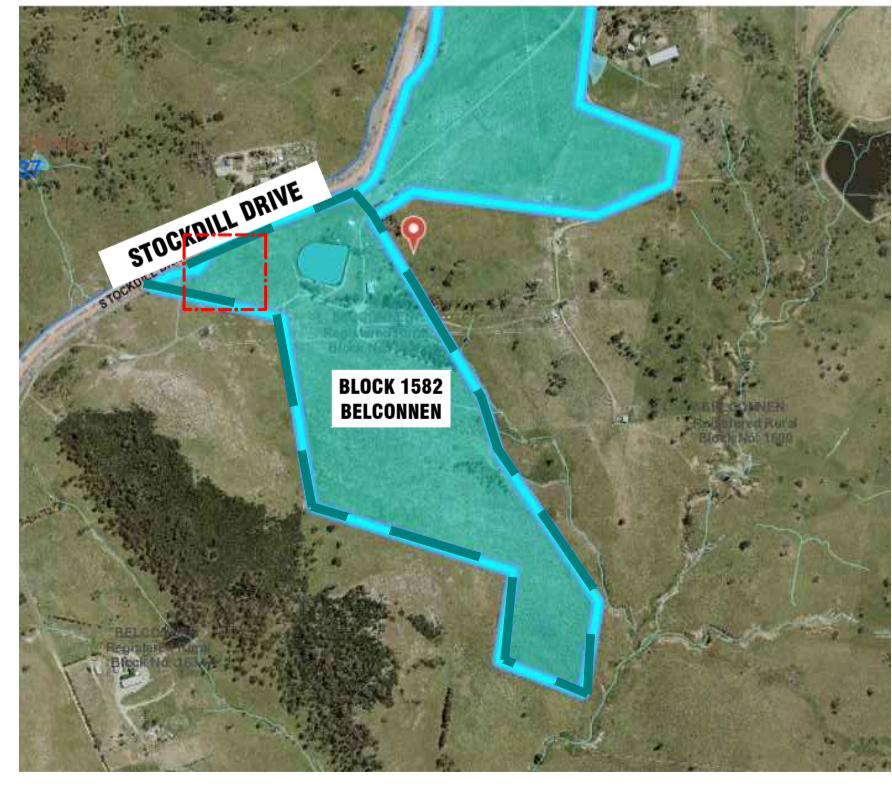
LEGEND

- BOUNDARIES**
- SITE BOUNDARY
- EXISTING VEGETATION**
- ⊕ TREES TO BE RETAINED
 - ⊕ REGULATED TREES + 2.0m TPZ
- TREE 02** TREE NO.
- PROPOSED TREE PROTECTION MEASURES**
- 1800mm H TEMPORARY PROTECTION FENCING refer to Tree Protection Notes
- REFER TO TREE ASSESSMENT PLAN L100 FOR TREE ASSESSMENT DATA
- REFER TO LMPP FOR TREES ON PUBLIC LAND



TREE 02

KEY PLAN



PROJECT
 21-321 Canberra Sand & Gravel
 Block 1582 Belconnen, ACT

ISSUE DEVELOPMENT APPLICATION **REV.** A

L101

Notes: Copyright and property of Place Logic Pty Ltd - may be used only for the stated project and issue status, and in accordance with terms of engagement for which it was commissioned. To be read in conjunction with all relevant contracts, specifications, reports, drawings and development approval conditions - obtain any outstanding statutory approvals prior to commencement of works. Use figured dimensions - do not scale from drawings. Dimensions are in metres unless noted otherwise.

SCALE
 1:500 @A1

REV	DESCRIPTION	DATE	DWN	CHK
A	FOR APPROVAL	08.04.22	MD	SK

CLIENT
 Ginninderry

ENGINEER
 calibre

CONSULTANT
 Place Logic
 Urban Design |
 Landscape Architecture
 www.placelogic.com.au |
 ABN 25 619 179 743

TREE MANAGEMENT PLAN