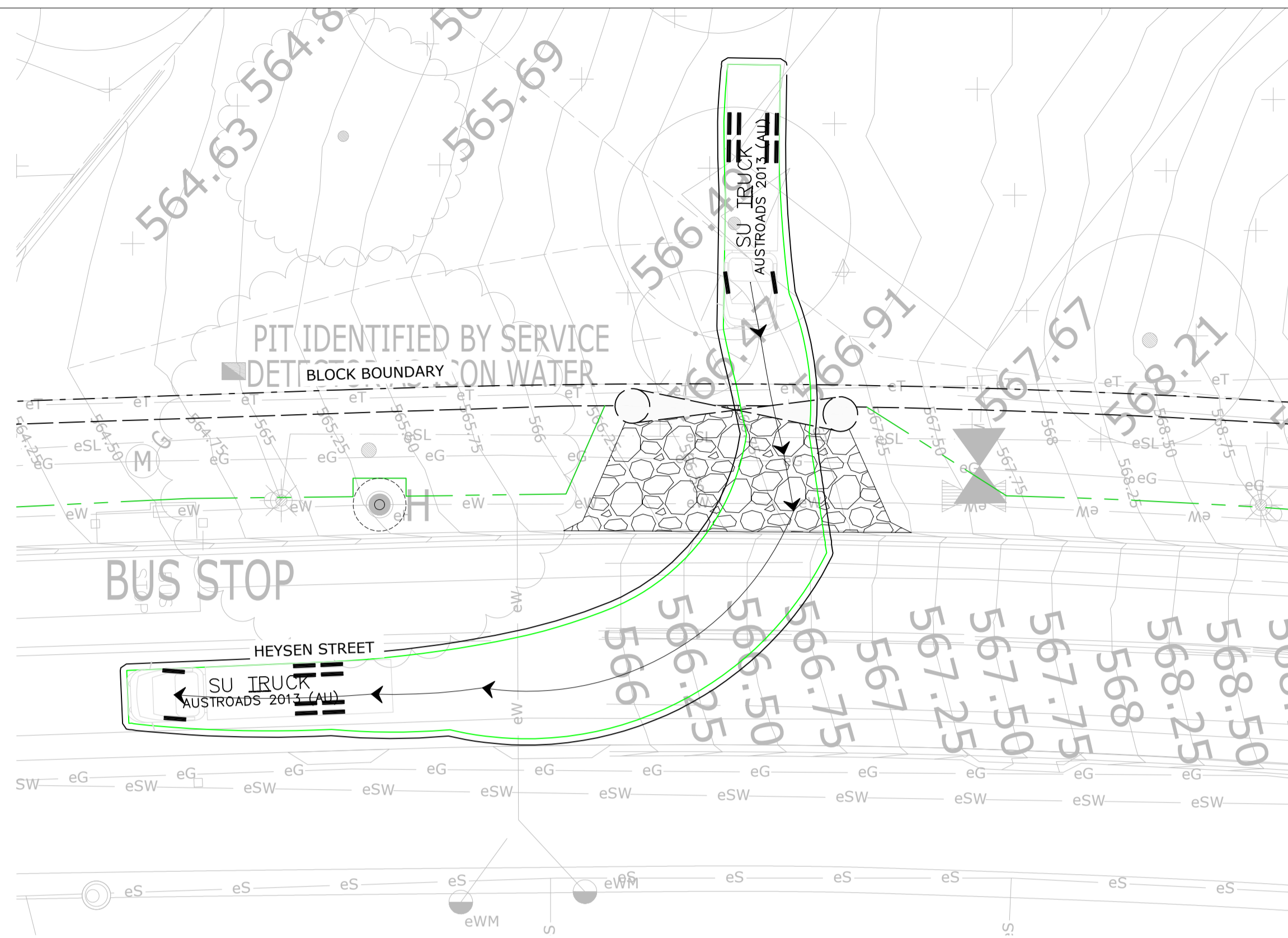
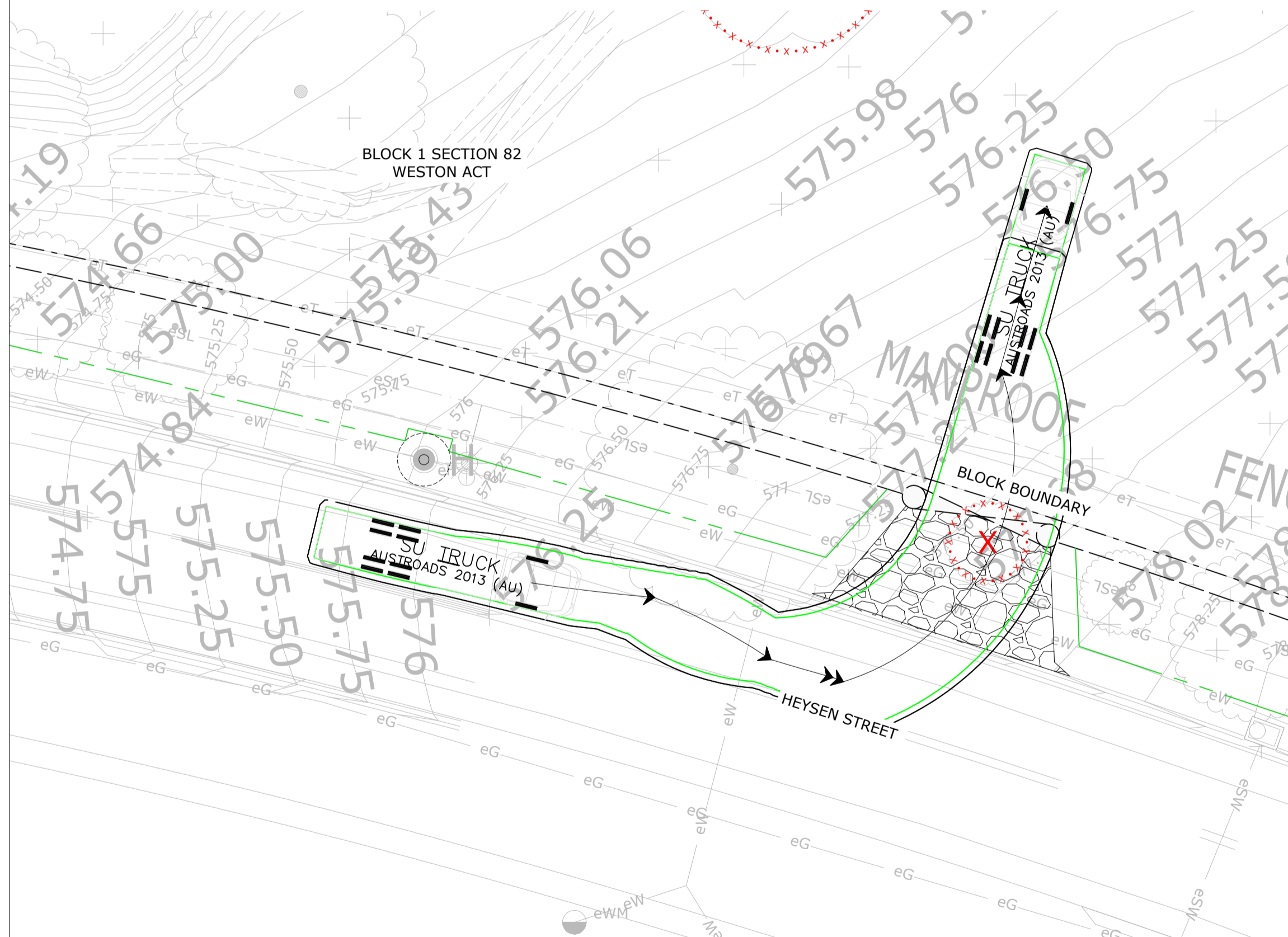


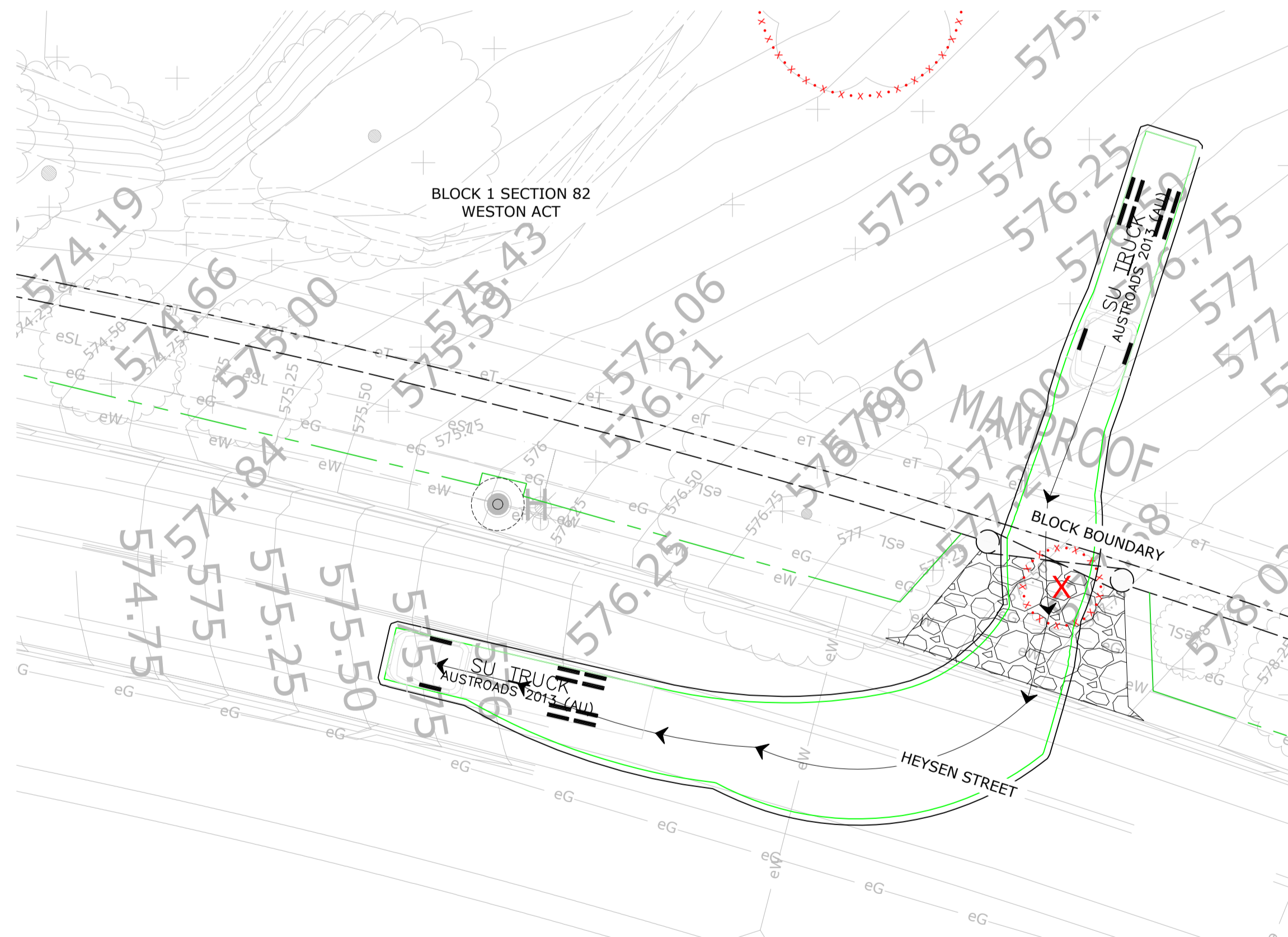
12.5m HRV SWEEP PATH ANALYSIS - HEYSEN STREET GATE (WEST) - ACCESS
1:200 @ A1



12.5m HRV SWEEP PATH ANALYSIS - HEYSEN STREET GATE (WEST) - EGRESS
1:200 @ A1



12.5m HRV SWEEP PATH ANALYSIS - HEYSEN STREET GATE (EAST) - ACCESS
1:200 @ A1

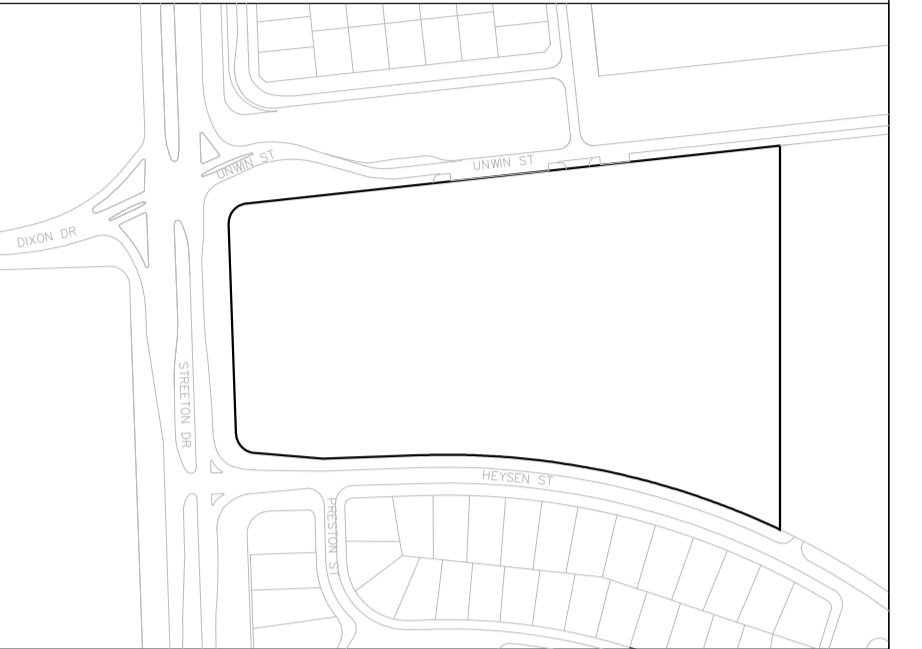


12.5m HRV SWEEP PATH ANALYSIS - HEYSEN STREET GATE (EAST) - EGRESS
1:200 @ A1

DISCIPLINE: CIVIL SERVICES

REV	ISSUE	CHK'D	APP'D	DATE
1	PRELIMINARY	S.G.	S.G.	29/11/21
2	PRELIMINARY	S.G.	S.G.	18/08/22

ALL DRAWINGS ARE DESIGNED TO BE PRINTED AND READ IN COLOUR. IT IS THE CONTRACTORS' RESPONSIBILITY TO PRINT DRAWINGS IN COLOUR TO AVOID ANY POTENTIAL DISCREPANCIES IF DRAWINGS ARE PRINTED IN BLACK AND WHITE.



Vital Design Solutions
HYDRAULIC CIVIL FIRE

Canberra - Ground floor, 20 Spongolite Street, Beard ACT 2620
Melbourne - Level 22, 535 Bourke Street, Melbourne Vic 3000
Tel: 02 6297 2785 Email: admin@vdsol.com.au ABN 45 151 340 788
Fax: 02 6299 2316 Web: vdsol.com.au ACN 151 340 788

ARCHITECT

CLIENT

PROJECT
**WESTON VILLAGE
BLOCK 1 SECTION 82
UNWIN STREET
WESTON ACT**

DRAWING TITLE
**TTMP - VEHICLE MOVEMENT
PLAN (SHEET 02 OF 02)**

ALL DIMENSIONS ARE TO BE VERIFIED ON SITE PRIOR TO COMMENCEMENT OF WORKS, ORDERING MATERIAL, OR PRODUCING SHOP DRAWINGS. THE COPYRIGHT OF THIS DRAWING REMAINS WITH VITAL DESIGN SOLUTIONS PTY LTD.

JOB REFERENCE: **VS21063**
DRAWING NUMBER: **C.123**

DESIGNED: S.GWYNNE
DRAFTED: E.PEARSON

SCALE: 0 2.0 4.0 6.0m

SCALE: 1:200 SIZE: A1

ISSUE: **NOT FOR CONSTRUCTION**
REVISION: **2**