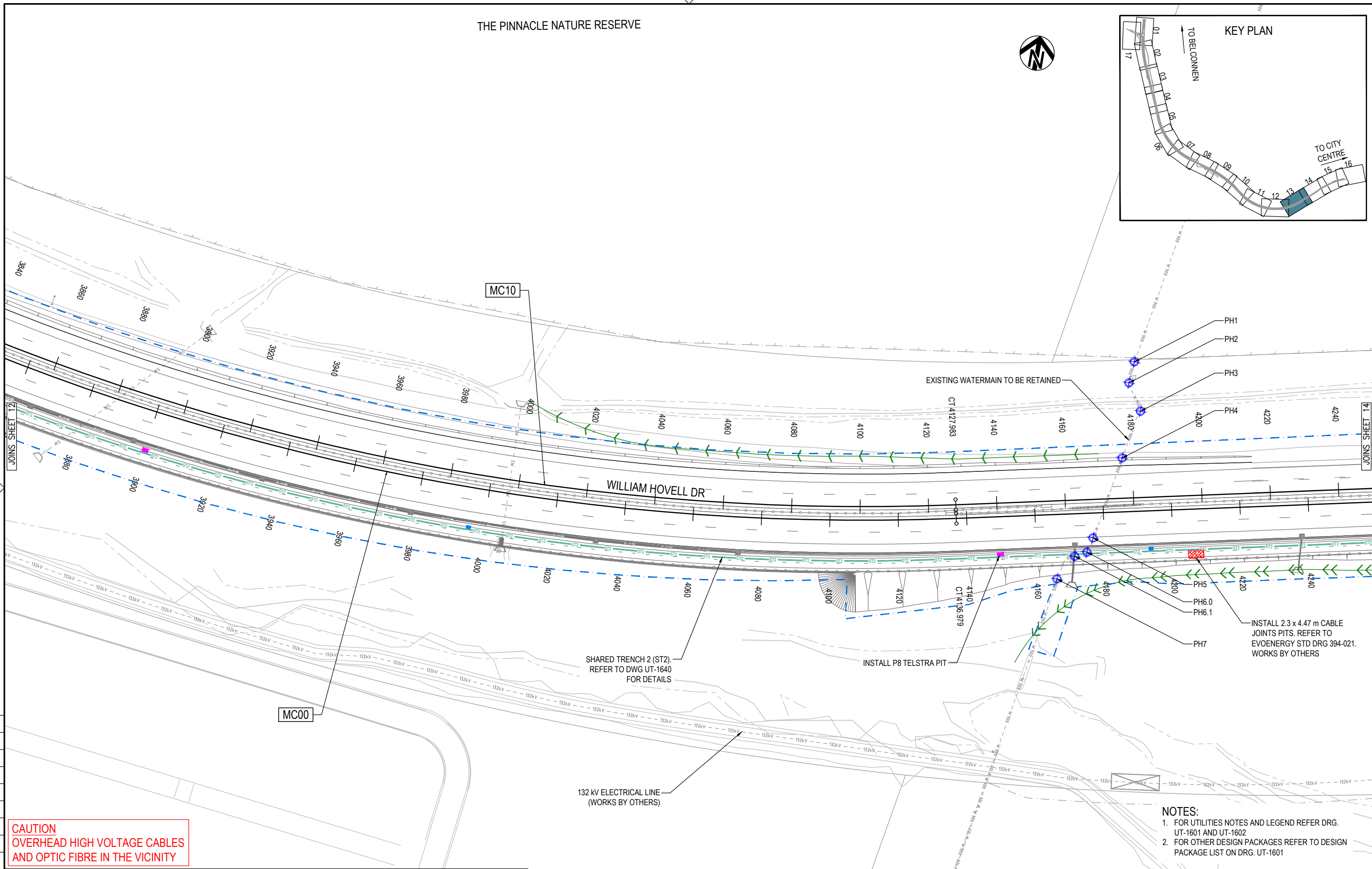
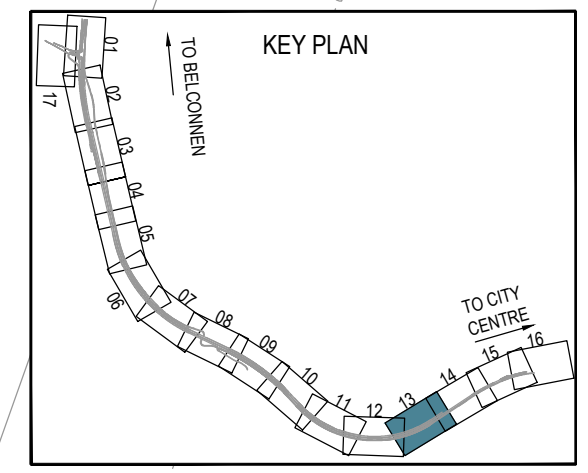


THE PINNACLE NATURE RESERVE



CAUTION
OVERHEAD HIGH VOLTAGE CABLES
AND OPTIC FIBRE IN THE VICINITY

- NOTES:**
- FOR UTILITIES NOTES AND LEGEND REFER DRG. UT-1601 AND UT-1602
 - FOR OTHER DESIGN PACKAGES REFER TO DESIGN PACKAGE LIST ON DRG. UT-1601

150 mm ON ORIGINAL

DRAWING FILE LOCATION / NAME V:\Vault\Projects\3002750\CAD\DWG\09_UT_Utilities\3002750-UT-1622.dwg		PLLOT DATE 24 May 2024	TIME 09:50:40
EXTERNAL REFERENCE FILES	REV	DATE	AMENDMENT / REVISION DESCRIPTION
	A	19.06.2020	PRELIMINARY SKETCH PLAN
	B	08.10.2020	PRELIMINARY SKETCH PLAN
	C	13.11.2020	PRELIMINARY SKETCH PLAN SUBMISSION
	D	29.02.2024	DRAFT DOCUMENT READINESS (DR) SUBMISSION
	E	24.05.2024	FINAL DOCUMENT READINESS (DR) SUBMISSION

WVR No.	APPROVAL	TITLE	NAME
0007	DK	DRAFTER	N. BROOKE-TAYLOR
0014	DK	DRAFTING CHECK	X. SECUBAN
0015	DK	DESIGNER	T. THINN
0036	T.VN	DESIGN CHECK	L. MULYADI
0037	T.VN	PROJECT MANAGER	K. DECANHA
		PROJECT DIRECTOR	T. VAN NIEKERK

SCALES AT A1 SIZE DRAWING

SCALE 1:500

DESIGNER

Member of the Surbana Jurong Group
ABN 47 065 475 149

LEVEL 9, 12 MOORE STREET
CANBERRA ACT 2601 AUSTRALIA
SMEC PROJECT No 3002750

CLIENT

Transport Canberra & City Services

PROJECT TITLE WILLIAM HOVELL DRIVE DUPLICATION		PROJECT / DRAWING No. 3002750-UT-1622	REVISION E
UTILITIES SHEET 13			
SCALE AS SHOWN	PHASE DETAIL DESIGN		