

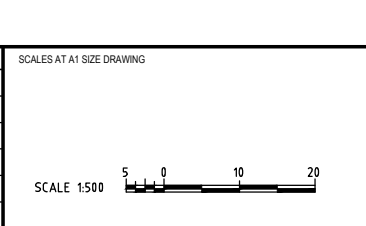
CAUTION
OVERHEAD HIGH VOLTAGE CABLES
AND OPTIC FIBRE IN THE VICINITY

- NOTES:**
- FOR UTILITIES NOTES AND LEGEND REFER DRG. UT-1601 AND UT-1602
 - FOR OTHER DESIGN PACKAGES REFER TO DESIGN PACKAGE LIST ON DRG. UT-1601

150 mm ON ORIGINAL
A1

DRAWING FILE LOCATION / NAME V:\Vault\Projects\3002750\CAD\DWG\09_UT_Utilities\3002750-UT-1624.dwg		DATE 24 May 2024	TIME 09:52:39
REV	DATE	AMENDMENT / REVISION DESCRIPTION	WVR No.
A	19.06.2020	PRELIMINARY SKETCH PLAN	0007
B	08.10.2020	PRELIMINARY SKETCH PLAN	0014
C	13.11.2020	PRELIMINARY SKETCH PLAN SUBMISSION	0015
D	29.02.2024	DRAFT DOCUMENT READINESS (DR) SUBMISSION	0036
E	24.05.2024	FINAL DOCUMENT READINESS (DR) SUBMISSION	0037

APPROVAL	TITLE	NAME
DK	DRAFTER	N. BROOKE-TAYLOR
DK	DRAFTING CHECK	X. SECUBAN
DK	DESIGNER	T. THINN
T.VN	DESIGN CHECK	L. MULYADI
T.VN	PROJECT MANAGER	K. DECANHA
T.VN	PROJECT DIRECTOR	T. VAN NIEKERK



DESIGNER

Member of the Surbana Jurong Group
ABN 47 065 475 149

LEVEL 9, 12 MOORE STREET
CANBERRA ACT 2601 AUSTRALIA
SMEC PROJECT No 3002750

CLIENT

Transport Canberra & City Services

PROJECT TITLE WILLIAM HOVELL DRIVE DUPLICATION		PROJECT / DRAWING No. 3002750-UT-1624	
UTILITIES SHEET 15		SCALE AS SHOWN	PHASE DETAIL DESIGN
		REVISION E	