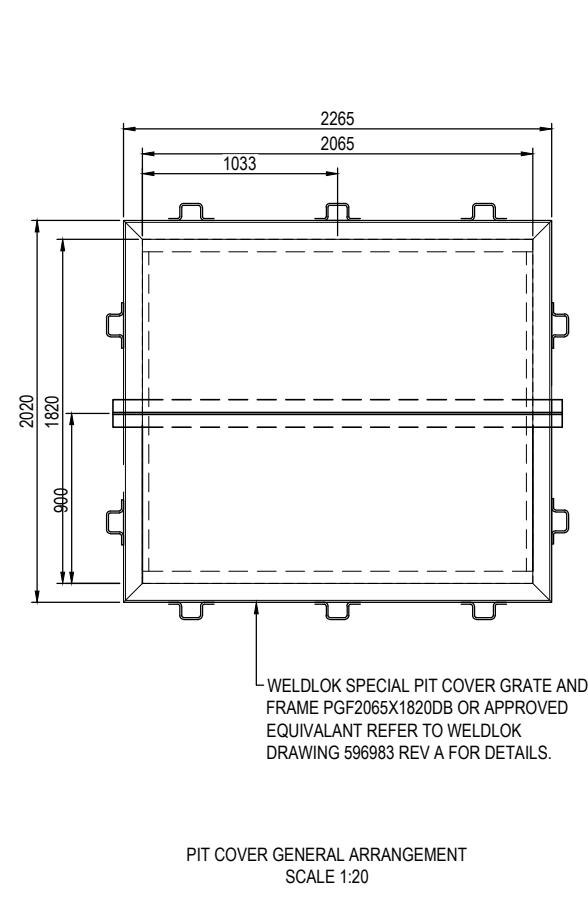
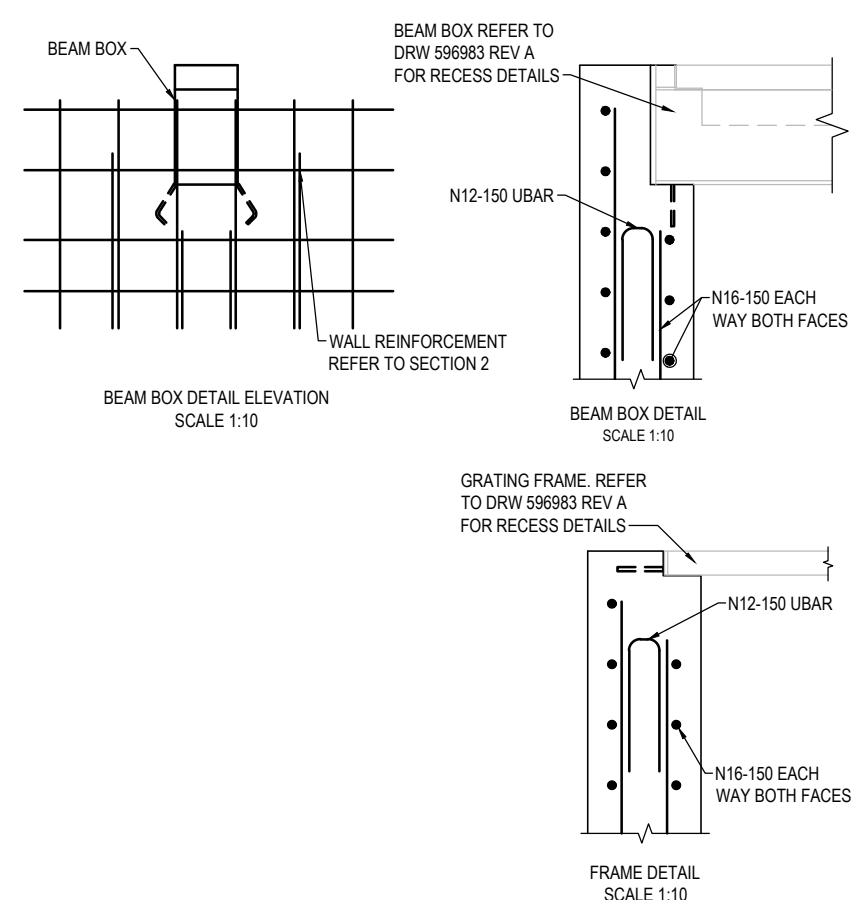


PIT S12 PLAN
SCALE 1:20



PIT COVER GENERAL ARRANGEMENT
SCALE 1:20

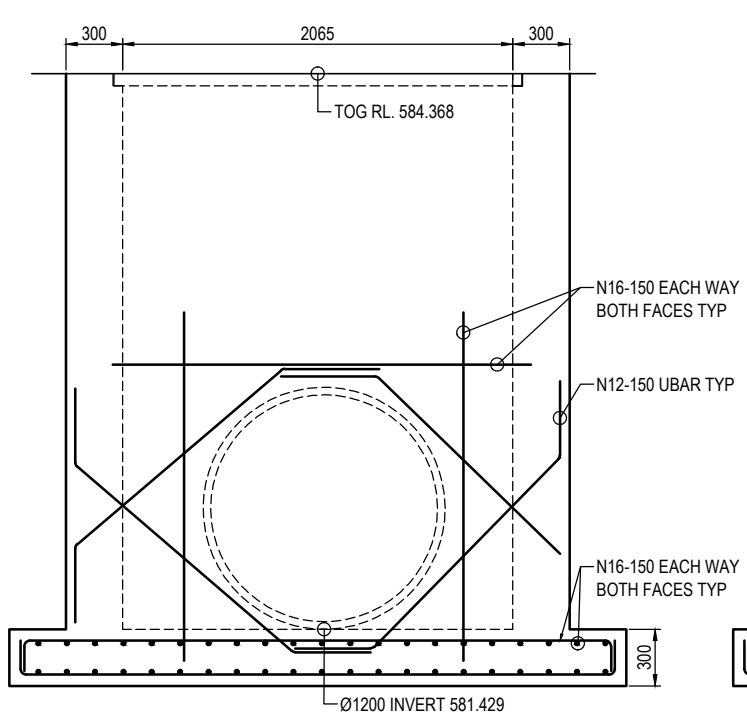


BEAM BOX DETAIL ELEVATION
SCALE 1:10

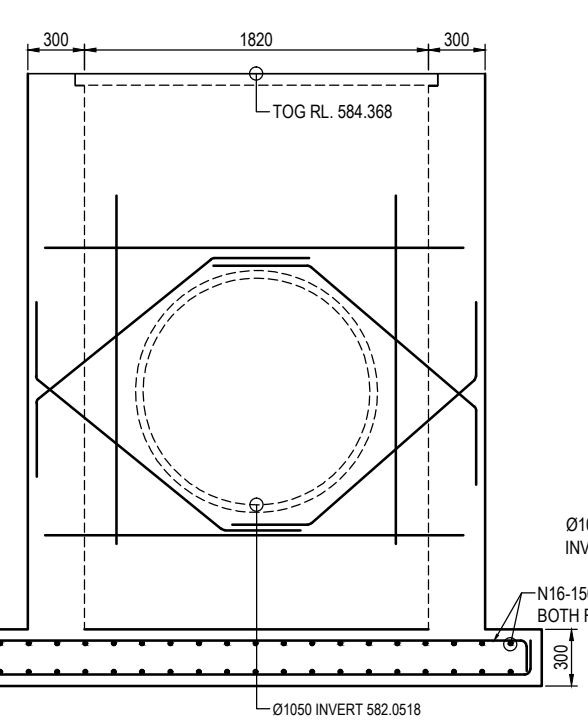
BEAM BOX DETAIL
SCALE 1:10

FRAME DETAIL
SCALE 1:10

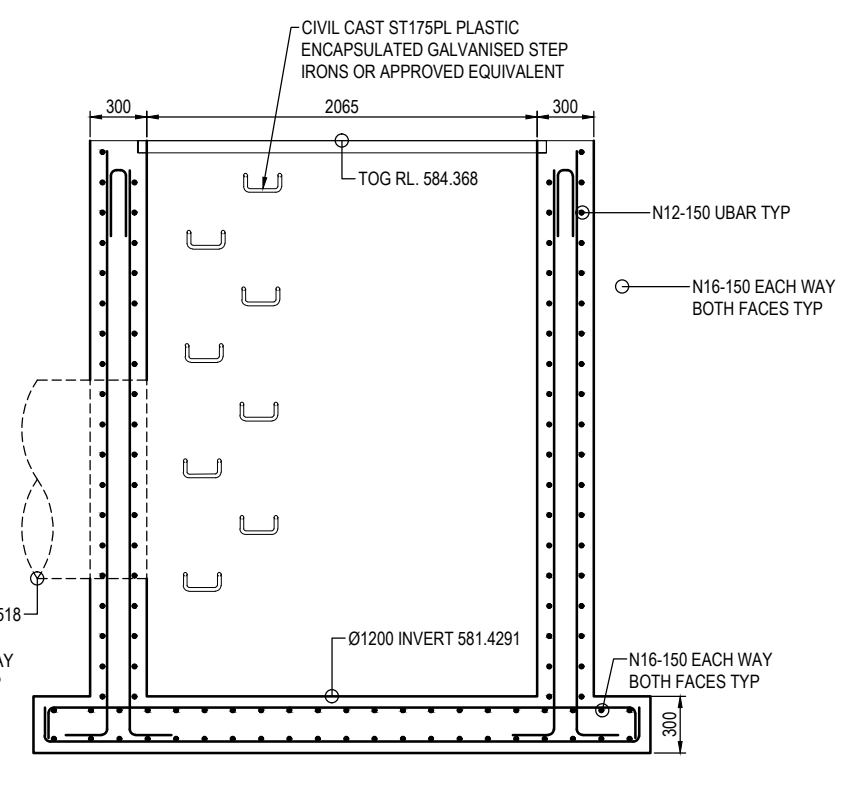
SPECIAL PIT S12



SECTION 01
SCALE 1:20



SECTION 03
SCALE 1:20



SECTION 02
SCALE 1:20

- GENERAL NOTES:**
- FOR PIT DEPTHS AND PIPE INVERTS REFER TO DRAINAGE LONGITUDINAL SECTIONS ON DRGS SM-0201 - SM-0301.
 - FOR SETOUT CO-ORDINATES AND PIT SCHEDULE REFER DRG SM-0301.
 - CONFINED SPACE ENTRY PRECAUTIONS MUST BE IN PLACE BEFORE ACCESS INSIDE PITS.

- DESIGN STANDARDS**
- AS3600 CONCRETE DESIGN.

- STRUCTURAL GENERAL NOTES**
- DIMENSIONS ARE IN MILLIMETRES
 - STATIONS AND REDUCED LEVELS ARE IN METRES
 - REDUCED LEVELS ARE RELATED TO THE AUSTRALIAN HEIGHT DATUM
 - ALL BACKFILL MUST BE IN ACCORDANCE WITH RMS SPECIFICATIONS R11 AND R44.
 - THE MAXIMUM DYNAMIC ROLLER COMPACTION LOAD SHALL BE 20kN/m, COMPACT THE FILL MATERIAL WITHIN 1500 OF THE WALL FACE WITH A PEDESTRIAN ROLLER OR PLATE COMPACTOR.
 - WHERE TEMPORARY WORKS ARE REQUIRED TO UNDERTAKE THE WORKS SHOWN ON THESE DRAWINGS, THE DESIGN AND IMPLEMENTATION OF THE TEMPORARY WORKS ARE THE RESPONSIBILITY OF THE CONTRACTOR IN ACCORDANCE WITH THE CONTRACT DOCUMENTS.

- STRUCTURAL WORK HAS BEEN DESIGNED FOR THE FOLLOWING LOADS:**
- PERMANENT DEAD LOADS OF STRUCTURE AS SHOWN ON DRAWINGS.
 - SOIL DENSITY 20kN/m³.
 - AT REST LATERAL EARTH PRESSURE COEFFICIENT $k_0=0.5$
 - PIT COVERS MUST BE CLASS D IN ACCORDANCE WITH AS3996.

- GEOTECHNICAL NOTES**
- THE FOUNDING SOILS FOR THE CULVERT BASE SHALL COMPRISE A MINIMUM OF VERY STIFF CLAY WITH A MINIMUM ALLOWABLE BEARING CAPACITY OF 200 kPa. UNSUITABLE MATERIALS WOULD COMPRISE VERY SOFT TO FIRM CLAY, ORGANIC OR ALLUVIAL MATERIALS OR CLAY WITH EXCESSIVE MOISTURE THAT WOULD AFFECT CONSTRUCTION OF THE CULVERT BASE
 - ANY UNSUITABLE FOUNDING MATERIALS MUST BE REMOVED AND REPLACED WITH GENERAL FILL, PLACED IN ACCORDANCE WITH SPECIFICATIONS R11 AND R44. WHERE THE FOUNDATION MATERIALS COMPRISE ROCK, THE FOUNDATION LEVEL MUST BE EXCAVATED TO A DEPTH OF 300mm BELOW THE FOUNDING LEVEL AND REPLACED WITH BEDDING MATERIAL IN ACCORDANCE WITH SPECIFICATION R11.
 - A GEOTECHNICAL STRENGTH REDUCTION FACTOR ϕ OF 0.50 HAS BEEN APPLIED TO THE ULTIMATE END BEARING.

- CONCRETE & REINFORCEMENT NOTES**
- MINIMUM 28 DAY COMPRESSIVE STRENGTH FOR ALL CAST-IN-PLACE CONCRETE MUST BE 40MPa.
 - MINIMUM 28 DAY COMPRESSIVE STRENGTH OF MASS CONCRETE MUST BE 20MPa.
 - CONCRETE EXPOSURE CLASSIFICATION: ATMOSPHERIC B1, SOIL B1.
 - CONCRETE MIX MUST BE IN ACCORDANCE WITH RMS B80.
 - CURING MUST BE IN ACCORDANCE WITH RMS B80.
 - EDGES MUST BE CHAMFERED 20 x 20 AND RE-ENTRANT ANGLES FILLETED 20 x 20 UNLESS SPECIFIED OTHERWISE.
 - NCF DENOTES NO CHAMFER OR FILLET.
 - REINFORCEMENT MUST COMPLY WITH AS/NZS 4671 GRADE D500N (BARS) AND D500L (MESH).
 - UNLESS SPECIFIED OTHERWISE NOMINAL COVER TO REINFORCEMENT NEAREST TO THE CONCRETE SURFACE SHALL BE: 55mm
 - UNLESS NOTED OTHERWISE, THE MINIMUM LAP LENGTHS MUST BE AS FOLLOWS:
MINIMUM TENSILE DEVELOPMENT LENGTH IS 0.8x LAP LENGTH.

BAR SIZE	N12	N16	N20
a) HORIZONTAL BARS WITH >300mm OF CONCRETE CAST BELOW THE BAR:	575	760	1140
b) OTHER BARS:	440	590	725

150 mm ON ORIGINAL

DRAWING FILE LOCATION / NAME V:_Vault\Projects\3002750\CAD\DWG\07_DD_Drainage\3002750-DD-1446.dwg		PLOT DATE 15 Mar 2024		TIME 12:49:49	
EXTERNAL REFERENCE FILES	REV A	DATE #REF!	AMENDMENT / REVISION DESCRIPTION #REF!	WVR No. #REF!	APPROVAL #REF!
				DRAFTER <i>N. BROOKE-TAYLOR</i>	SCALES AT A1 SIZE DRAWING SCALE 1:20 SCALE 1:10
				DRAFTING CHECK <i>X. SECUBAN</i>	
				DESIGNER <i>M. RAHMAN</i>	
				DESIGN CHECK <i>D. DONGOL</i>	
				PROJECT MANAGER <i>K. DECANHA</i>	
				PROJECT DIRECTOR <i>T. VAN NIEKERK</i>	

DESIGNER Member of the Surbana Jurong Group ABN 47 065 475 149 LEVEL 9, 12 MOORE STREET CANBERRA ACT 2601 AUSTRALIA SMEC PROJECT No 3002750	CLIENT Transport Canberra & City Services	PROJECT TITLE WILLIAM HOVELL DRIVE DUPLICATION	
		DRAINAGE DETAILS SHEET 6	
SCALE AS SHOWN	PHASE DETAIL DESIGN	PROJECT / DRAWING No. 3002750-DD-1446	REVISION A

DR