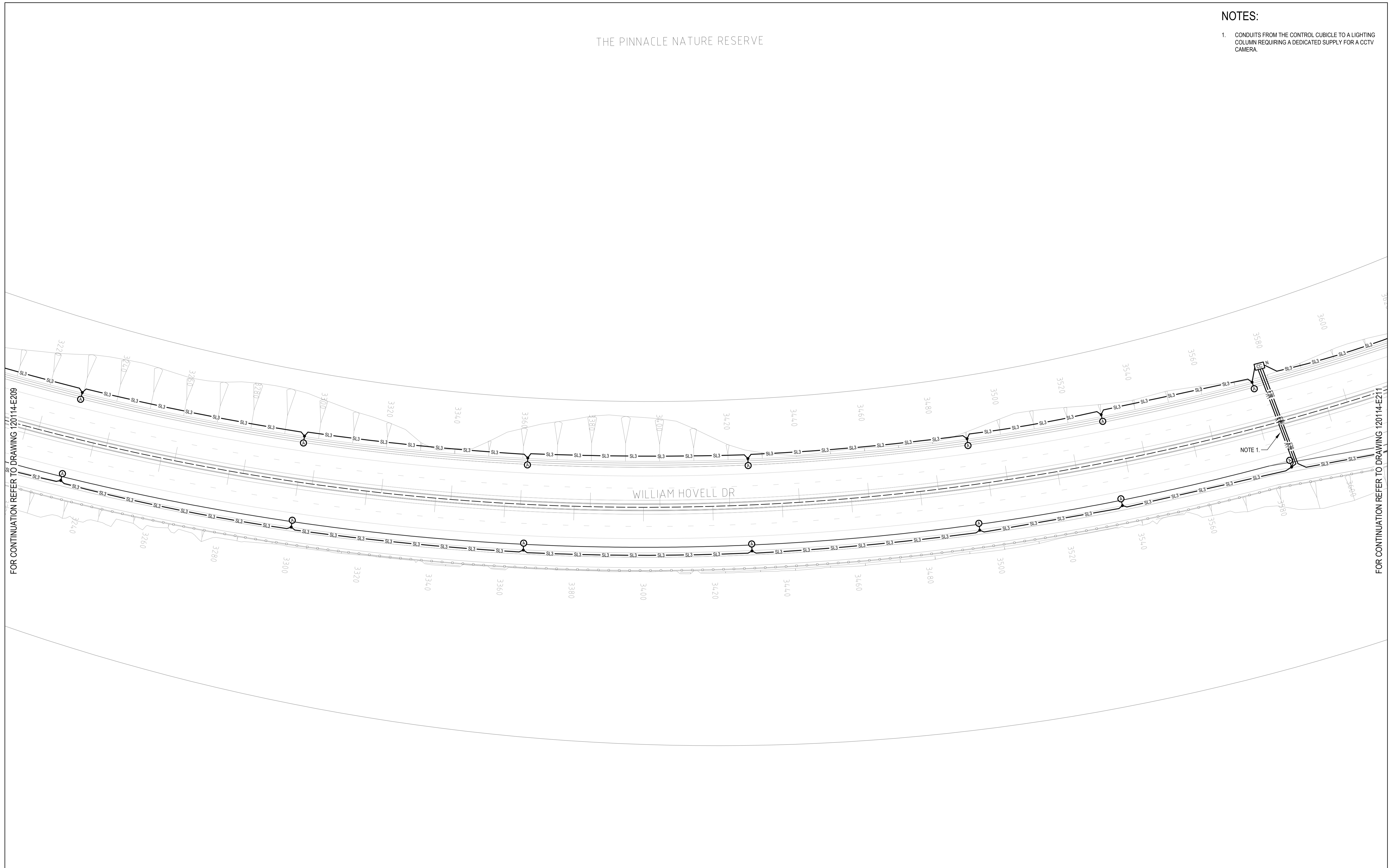


THE PINNACLE NATURE RESERVE

NOTES:

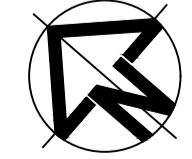
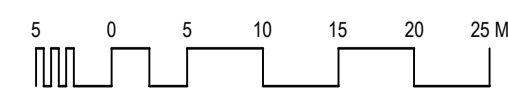
1. CONDUITS FROM THE CONTROL CUBICLE TO A LIGHTING COLUMN REQUIRING A DEDICATED SUPPLY FOR A CCTV CAMERA.



FOR CONTINUATION REFER TO DRAWING 120114-E209

FOR CONTINUATION REFER TO DRAWING 120114-E211

Rev.	Date	Details and Status	By	Rev.	Date	Details and Status	By
05	11.10.21	DRAFT DOCUMENT READINESS	JT				
04	13.11.20	ISSUE FOR FINAL PSP	NF				
03	13.10.20	REISSUE FOR PSP (BACKGROUND UPDATE)	NF				
02	09.10.20	REISSUE FOR PSP (BACKGROUND UPDATE)	DO	07	08.03.24	REISSUE FOR DRAFT DR	JT
01	19.06.20	ISSUE FOR PSP	NF	06	16.06.22	REISSUE FOR DRAFT DOCUMENT READINESS	JT



  


SCALE BAR FOR 1:500

FOR LEGEND REFER TO DRAWING 120114-E001

**NOT FOR TENDER**

© COPYRIGHT of this design and plan is the property of ACOR Rudds Consultants Pty Ltd. ACN 054 221 162, all rights reserved. It must not be used, modified, reproduced or copied wholly or in part without written permission from ACOR Rudds Consultants Pty Ltd. ACOR Rudds Consultants is a trademark licensed to ACOR Rudds Consultants Pty Ltd by ACOR Consultants Pty Ltd.



**ACOR Rudds Consultants Pty Ltd**  
Unit 1, 5 Bodalla Place  
 Fyshwick ACT 2609  
 T +61 2 6240 2900

Designed <b>A. Bencke</b>	Reviewed / Date <b>M. O'Connor 08.03.24</b>	Approved / Date <b>A. Bencke 08.03.24</b>
Drawn <b>J. Thilakasiri</b>	AutocAD Drawing 120114-E210 [07]	

Client  
**SMEC AUSTRALIA PTY LTD**

Project  
**WILLIAM HOVELL DRIVE  
DUPLICATION**

Drawing Title  
**NEW - STREET LIGHTING  
SHEET 11  
ELECTRICAL SERVICES**

Scale <b>1:500</b>	Sht Size <b>A1</b>	Drawing No. <b>120114-E210</b>	Rev. <b>07</b>
-----------------------	-----------------------	-----------------------------------	-------------------