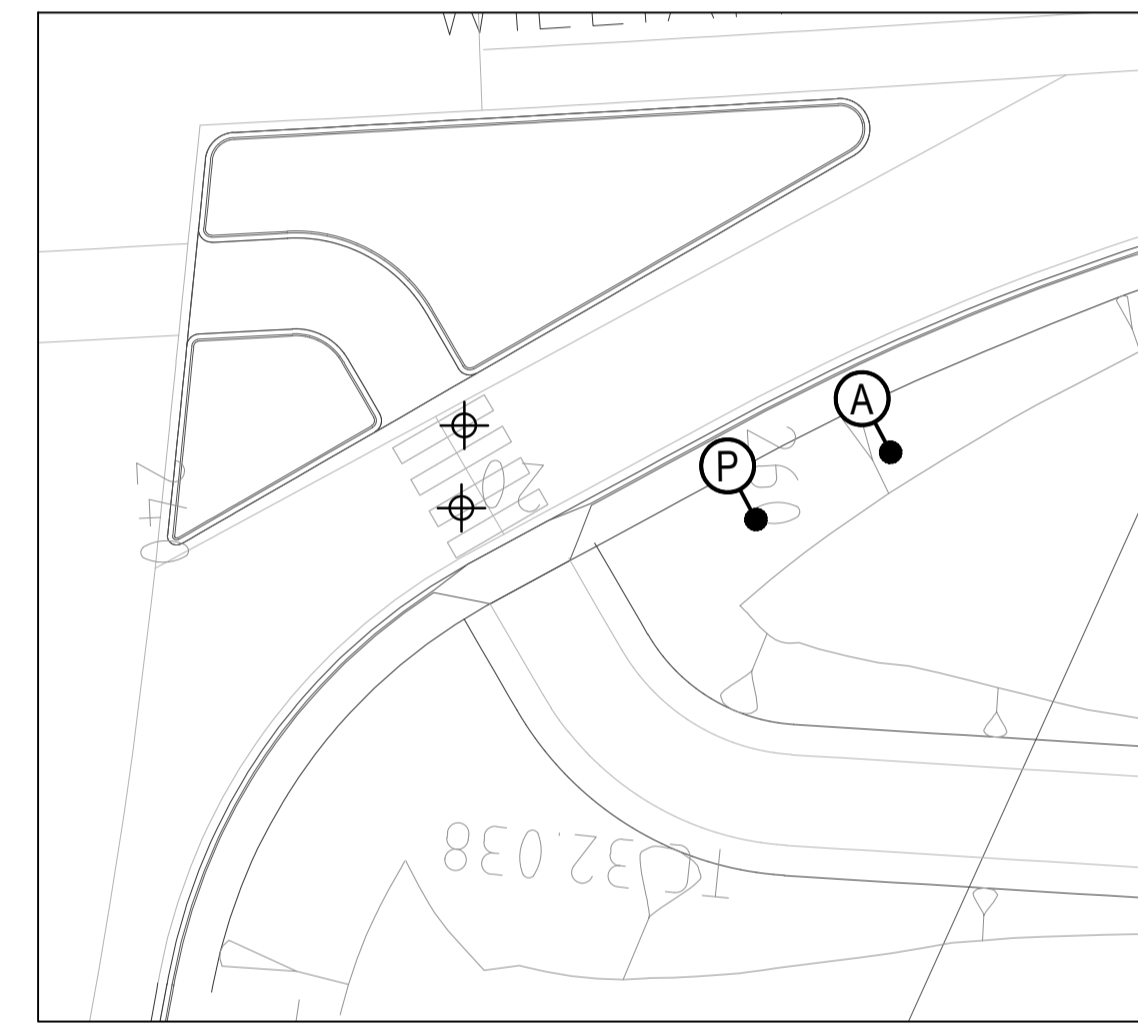
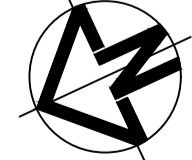


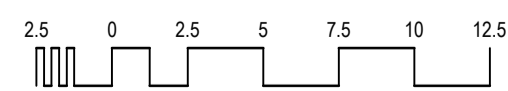
PEDESTRIAN CROSSING LUMINAIRE AIMING DETAIL 1
SCALE 1:250 E200



PEDESTRIAN CROSSING LUMINAIRE AIMING DETAIL 2
SCALE 1:250 E200


Rev.	Date	Details and Status	By	Rev.	Date	Details and Status	By
02	08.03.24	REISSUE FOR DRAFT DR	JT				
01	11.10.21	DRAFT DOCUMENT READINESS	JT				





SCALEBAR FOR 1:250

FOR LEGEND REFER TO DRAWING 120114-E001

NOT FOR TENDER	 ACOR Rudds Consultants Pty Ltd <small>Unit 1, 5 Boddalla Place Fyshwick ACT 2609 T +61 2 6240 2900</small>	Client SMEC AUSTRALIA PTY LTD	Drawing Title PEDESTRIAN CROSSING LIGHTING DETAILS ELECTRICAL SERVICES
© COPYRIGHT of this design and plan is the property of ACOR Rudds Consultants Pty Ltd. ACN 054 221 162. All rights reserved. It must not be used, modified, reproduced or copied wholly or in part without written permission from ACOR Rudds Consultants Pty Ltd. ACOR Rudds Consultants is a trademark licensed to ACOR Rudds Consultants Pty Ltd by ACOR Consultants Pty Ltd.	Designed A. Bencke	Reviewed / Date M. O'Connor 08.03.24	Approved / Date A. Bencke 08.03.24
Drawn J. Thilakasiri	AutoCAD Drawing 120114-E600 [02]	Project WILLIAM HOVELL DRIVE DUPLICATION	Scale Sht Size Drawing No. 1:250 A1 120114-E600
			02