

NEW LUMINAIRE AND COLUMN DETAILS

SYMBOL	LAMP	OPTICS	LUMINAIRE	COLUMN HEIGHT	OUTREACH ARM	UPCAST ANGLE	COLUMN TYPE	COLUMN BASE	ADDITIONAL REQUIREMENTS
	VARIOUS	VARIOUS	EXISTING POLE MOUNTED STREETLIGHT TO BE REMOVED. NUMBER ADJACENT DENOTES ASSET NUMBER.	VARIOUS	VARIOUS	VARIOUS	VARIOUS	VARIOUS	
	LED 140W / 16,800lm 4000K	DWV	NEW - STREET LIGHTING LUMINAIRE. EQUAL TO SIGNIFY (PHILIPS) BRP392 LED168/NW 140W PSD II F7 ANZ DWV.	12m	3m	0°	GALVANISED STEEL OCTAGONAL SECTION IMPACT ABSORBING	DIRECT BURIED	
	2 x LED 140W / 16,800lm 4000K	DWV	NEW - STREET LIGHTING LUMINAIRE. EQUAL TO SIGNIFY (PHILIPS) BRP392 LED168/NW 140W PSD II F7 ANZ DWV.	12m	DUAL 3m	0°	GALVANISED STEEL OCTAGONAL SECTION IMPACT ABSORBING	DIRECT BURIED	
	AS PER TYPE A.								NEW COLUMN LOCATED TO REPLACE EXISTING COLUMN. REUSE EXISTING CABLING AND CONDUITING WHERE PRACTICAL. REFER TO ADDITIONAL NOTES ON THE DRAWINGS.
	LED 17W / 2,060lm 4000K	2 / 3 M	NEW - STREET LIGHTING LUMINAIRE. EQUAL TO GERARD SREETLED MKII 14W 4K PESN7 9006.	6.5m	0.15m	0°	GALVANISED STEEL OCTAGONAL SECTION IMPACT ABSORBING	DIRECT BURIED	
	AS PER TYPE A.								LUMINAIRES MOUNTED ON A COMBINED TRAFFIC SIGNALISATION AND LIGHTING COLUMN. REFER TO THE SCOPE OF WORKS FOR FURTHER DETAILS.
	VARIOUS	VARIOUS	EXISTING LUMINAIRE AND COLUMN TO REMIAN	VARIOUS	VARIOUS	VARIOUS	VARIOUS	VARIOUS	
	AS PER TYPE A.							BASE MOUNTED	COLUMN INSTALLED IN THE F-TYPE BARRIER. REFER TO THE DETAIL ON THIS DRAWING. PROVIDE THE ACCESS DOOR AT 950mm ABOVE THE CARRIAGEWAY (APPROX 130mm CLEAR FROM TOP OF F-TYPE BARRIER). CABLING SHALL BE RETICULATED THROUGH THE F-TYPE BARRIER.
	AS PER TYPE A.							BASE MOUNTED	NEW COLUMN LOCATED TO REPLACE EXISTING COLUMN. REUSE EXISTING CABLING AND CONDUITING WHERE PRACTICAL. REFER TO ADDITIONAL NOTES ON THE DRAWINGS. (SAME REQUIREMENTS AS TYPE B WITH BASE MOUNT)
	AS PER TYPE A.							BASE MOUNTED	SAME REQUIREMENTS AS TYPE A WITH BASE MOUNT.
	2 x LED 48W / 3,505lm 4000K	-	NEW - WE-EF FLC141 + GLARE SHIELD.	9m	3m	AIMED AS SHOWN ON THE PLANS.	GALVANISED STEEL OCTAGONAL SECTION IMPACT ABSORBING	DIRECT BURIED	
	LED 30W AMBER LEDES	WIDE BEAM [LB]	NEW UNDERPASS LIGHTING LUMINAIRE. EQUAL TO WE-EF VLR130.	N/A	N/A	N/A	N/A	N/A	LUMINAIRES PROVIDED WITH "FAUNA FRIENDLY" AMBER LEDES.

STREET LIGHTING DESIGN COMPLIANCE:

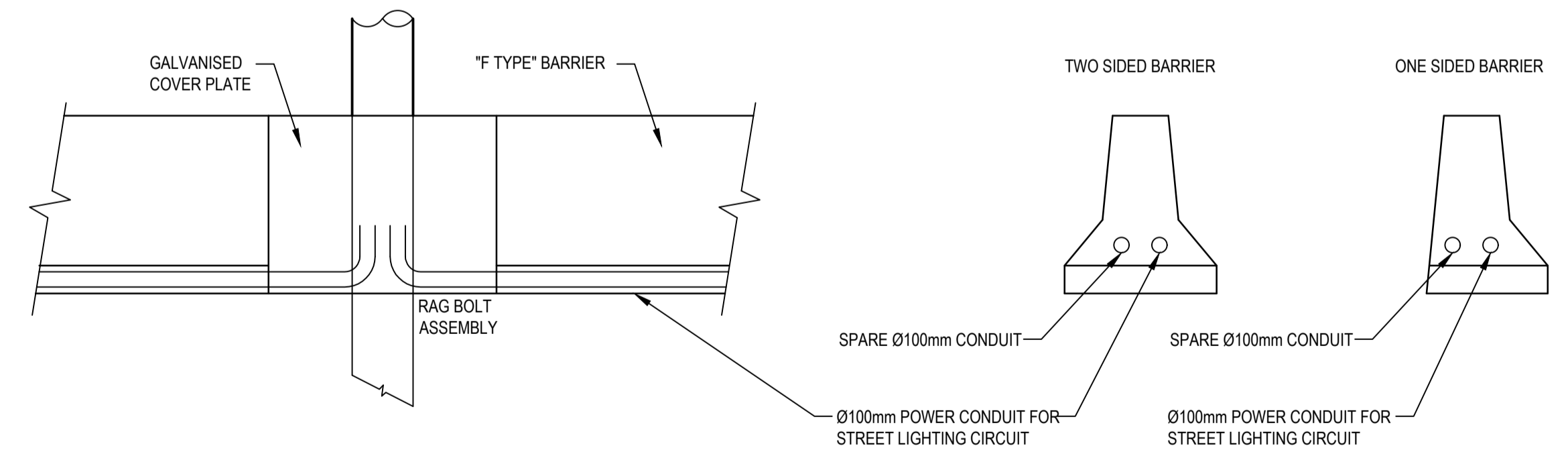
- THE STREET LIGHTING DESIGN FOR THIS PROJECT MEETS THE FOLLOWING REQUIREMENTS IN THE FOLLOWING SECTIONS:
- WILLIAM HOVELL DRIVE, INCLUDING THE INTERSECTION WITH DRAKE BROCKMAN DRIVE - CATEGORY V3 IN ACCORDANCE WITH AS/NZS 1158.1.1.
 - SHARED USER PATH - CATEGORY PP5 IN ACCORDANCE WITH AS/NZS 1158.3.1
 - PEDESTRIAN CROSSINGS - CATEGORY PX1 IN ACCORDANCE WITH AS/NZS 1158.4
 - ENTIRE PROJECT:
 - TCCS MUNICIPAL INFRASTRUCTURE TECHNICAL SPECIFICATION (MITS) 12 PUBLIC LIGHTING
 - TCCS MUNICIPAL INFRASTRUCTURE DESIGN STANDARD (MIS) 14 PUBLIC LIGHTING

GENERAL NOTES:

- STREET LIGHTS IMMEDIATELY ADJACENT TO PILLARS ARE TO BE A MINIMUM 2.5m CENTRE TO CENTRE.
- STREET LIGHT ASSETS MUST HAVE A MINIMUM CLEARANCE OF 1.5m TO OTHER STRUCTURES E.G. DRIVEWAYS ETC.
- STREET LIGHTS ON V CATEGORY ROADS SHALL MAINTAIN 3m BETWEEN LINE OF TRAFFIC AND COLUMN CENTRE.
- ALL STREET LIGHTING SHALL HAVE A 24 HOUR SUPPLY FROM THE CONTROLLER (IE PE CELL CONTROL IN EACH LUMINAIRE). EACH COLUMN SHALL BE PROVIDED WITH A WARNING LABEL WITHIN THE ACCESS PANEL. THE WARNING LABEL SHALL STATE "WARNING 24 HOUR STREET LIGHTING SUPPLY" AND SHALL HAVE MINIMUM 6mm TALL WHITE TEXT ON RED TRAFFOLYTE.
- ALL LUMINAIRES SHALL HAVE A 7 PIN NEMA PLUG AND PROGRAMMABLE DALI LED DRIVER (TO TCCS STANDARDS).
- REFER TO THE LEGEND ON THIS DRAWING FOR RETICULATION CABLE DETAILS.

ELECTRICAL INFRASTRUCTURE

SYMBOL	DESCRIPTION	REQUIREMENTS	SYMBOL	DESCRIPTION	REQUIREMENTS
	EXISTING STREET LIGHTING CABLE AND CONDUIT TO REMAIN OR BE REUSED.			EXISTING OVERHEAD HIGH VOLTAGE CABLING TO REMAIN. LOCATIONS ARE INDICATIVE ONLY.	CO-ORDINATE FINAL COLUMN LOCATIONS ACHIEVE CLEARANCE TO TCCS REQUIREMENTS. 0.6 TIME THE HEIGHT OF THE COLUMN (7.2m FOR A 12m COLUMN, 5.4m FOR 9m COLUMN).
	EXISTING STREET LIGHTING CABLE AND CONDUIT TO BE REMOVED.			NEW OVERHEAD HIGH VOLTAGE CABLING, BY OTHERS.	CO-ORDINATE FINAL COLUMN LOCATIONS ACHIEVE CLEARANCE TO TCCS REQUIREMENTS. 0.6 TIME THE HEIGHT OF THE COLUMN (7.2m FOR A 12m COLUMN, 5.4m FOR 9m COLUMN).
	NEW SINGLE PHASE STREET LIGHTING CABLE AND CONDUIT. PROVIDE 1x2c Cu 16mm² XLPE/PVC CABLE IN A 50mmØ CONDUIT UNLESS SHOWN OTHERWISE.			EXISTING HIGH VOLTAGE CONDUITS. EXISTING CONDUIT LOCATIONS SHOWN ARE INDICATIVE ONLY.	
	NEW 3 PHASE STREET LIGHTING CABLE AND CONDUIT. PROVIDE 1x4c Cu 16mm² XLPE/PVC CABLE IN A 50mmØ CONDUIT UNLESS SHOWN OTHERWISE.			EXISTING STREET LIGHTING CONTROL CUBICLE TO BE REMOVED.	
	EXISTING LOW VOLTAGE CONDUITS. EXISTING CONDUIT LOCATIONS SHOWN ARE INDICATIVE ONLY.			NEW STREET LIGHTING CUBICLE.	
	EXISTING OVERHEAD LOW VOLTAGE CABLING. LOCATIONS ARE INDICATIVE ONLY.	CO-ORDINATE FINAL COLUMN LOCATIONS ACHIEVE CLEARANCE TO TCCS REQUIREMENTS. 0.6 TIME THE HEIGHT OF THE COLUMN (7.2m FOR A 12m COLUMN, 5.4m FOR 9m COLUMN).		PEDESTRIAN CROSSING LUMINAIRE AIMING POINT.	
	NEW LOW VOLTAGE CABLE AND CONDUIT.	REFER TO NOTES ON THE DRAWINGS FOR SCOPE.		EXISTING AND NEW (BY OTHERS) ELECTRICAL POLE. LOCATIONS ARE INDICATIVE ONLY.	



INDICATIVE 'F' TYPE BARRIER AND COLUMN DETAIL

SCALE: 1:10

REFER TO THE CIVIL DRAWINGS FOR FURTHER INFORMATION

Rev.	Date	Details and Status	By	Rev.	Date	Details and Status	By
02	08.03.24	REISSUE FOR DRAFT DR	JT				
01	11.10.21	DRAFT DOCUMENT READINESS	JT				

NOT FOR TENDER	<p>ACOR Rudds Consultants Pty Ltd Unit 1, 5 Bodalla Place Fyshwick ACT 2609 T +61 2 6240 2900</p>	Client	SMEC AUSTRALIA PTY LTD		Drawing Title	LEGEND ELECTRICAL SERVICES	
		Project	WILLIAM HOVELL DRIVE DUPLICATION		Scale	Sht Size	Drawing No.
Designed	A. Bencke	Reviewed / Date	M. O'Connor 08.03.24	Approved / Date	A. Bencke 08.03.24		
Drawn	J. Thilakasi	AutoCAD Drawing	120114-E001 [02]				