

TYPICAL TRENCH DETAIL

SCALE 1:20

DIMENSIONS IN mm

EMBEDMENT ZONE SHALL BE IN ACCORDANCE

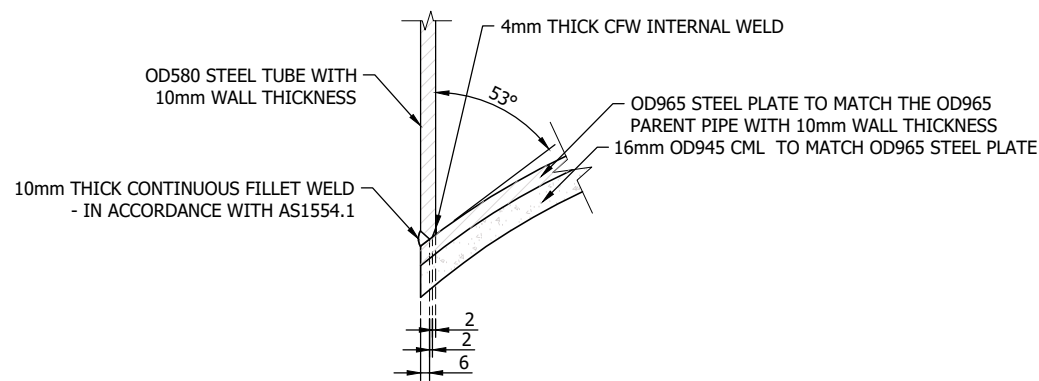
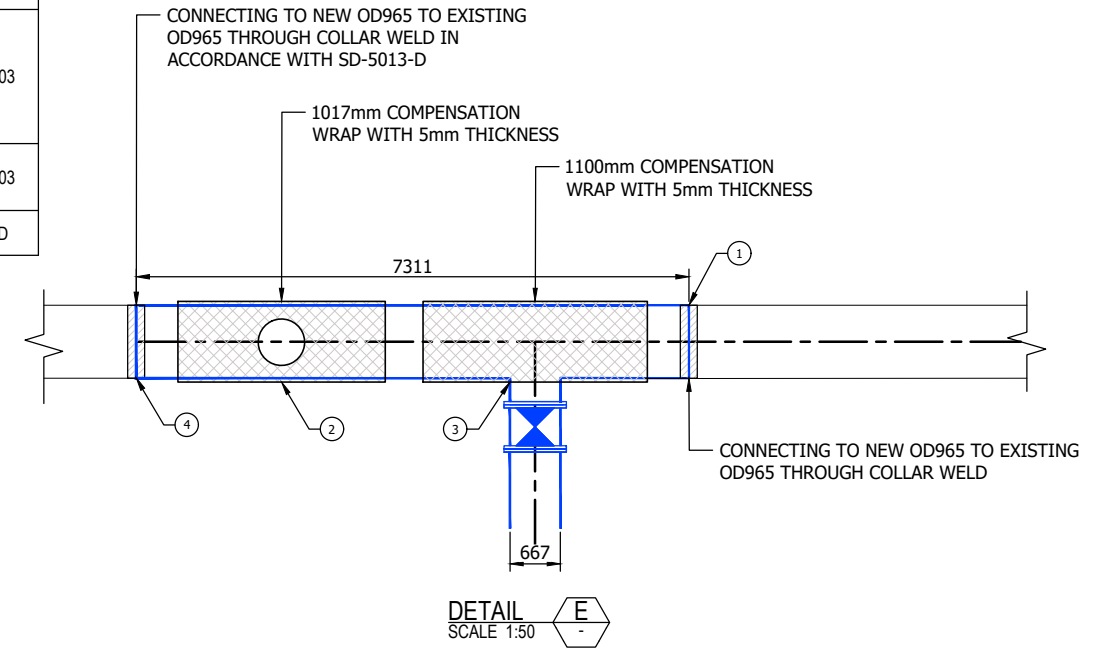
WITH TABLE 4.2 OF AS2566.2 - 2002

L₀ - 200mm

L_c - 350mm

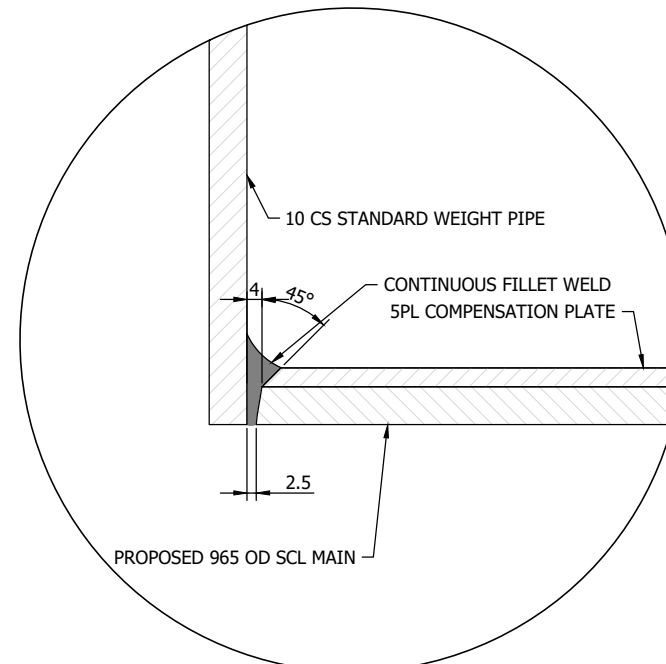
L₀ - 150mm

STRUCTURE DESCRIPTION LIST		
No.	DESCRIPTION	STANDARDS
01	COLLAR WELD	SD-5013-D
02	OD965 MSCL TEE - 10mm THICKNESS AND CML: 16mm, WITH DN610 - 10mm WALL THICKNESS PERMANENT ACCESS HATCH AT ORIENTATION OF 12 O'CLOCK	WSA PS-203
03	OD965x660 MSCL TEE - 10mm THICKNESS, CML: 16mm AT ORIENTATION OF 3 O'CLOCK	WSA PS-203
04	COLLAR WELD	SD-5013-D



DETAIL C

SCALE 1:25
WELD PREPARATION FOR ANGULAR WELD 10mm THICKNESS



DETAIL D

SCALE 1:10
WELD DETAILS FOR COMPENSATION WRAPS

NOTES

1. PRIOR TO WELDING CUT BACK COATINGS 50mm FROM NEAREST ASSEMBLY WELD.
2. IN DETAIL D FOR THICKNESS ≤ 12 mm, WELD OUTSIDE FIRST THEN BACK GOUGE TO SOUND METAL BEFORE WELDING INSIDE.
3. CEMENT MORTAR LINING TO BE REINSTATED IN ACCORDANCE WITH AS1281, OR WITH PENTAIR EZILINE MORTAR MIX STRICTLY IN ACCORDANCE WITH MANUFACTURES REQUIREMENTS, OR APPROVED EQUIVALENT. AT THE TIME OF APPLICATION OF THE MORTAR, THE SURFACE OF THE PIPE OR FITTING SHALL BE FREE OF LOOSE RUST, LOOSE MILL SCALE, DIRT, DEBRIS, OIL, GREASE AND OTHER DETRIMENTAL MATERIAL.
4. SLEEVE TO EXTEND A MINIMUM OF 100mm EITHER SIDE OF EXPOSED PIPE SURFACE. TO BE INSTALLED IN ACCORDANCE WITH MANUFACTURERS SPECIFICATIONS.
5. BOLTING DETAILS TO BE AS SHOWN ON SD-5010 FOR GALVANISED BOLTING SYSTEM
6. WELDING TO BE IN ACCORDANCE WITH AS/NZS 1554.1 CATEGORY SP.
7. FLANGES AND DRILLING TO BE IN ACCORDANCE WITH AS 4087 FIG. B7, B8 & B9
8. FLANGE WILL NEED TO BE A FLAT FACE/O-RING AS PER AS4087-2011 TABLE B7.
9. GASKETS AND 'O' RINGS TO COMPLY WITH WSA 109
10. CHAMBER COVER PANEL TO COMPLY WITH ICON WATER STANDARD DRAWINGS SD-3210-D, SD-8240-D & SD-8241-D.
11. THE CONTRACTOR HAS TO CHECK AND CORRECT ANY OVALITY/DEFORMATION IN THE EXISTING PIPE PRIOR TO WELDING.
12. COMPENSATION COLLAR HAS BEEN DETAILED IN ACCORDANCE WITH AWWA M11 VERSION 4
13. REFER TO WSA109 FOR BOLT TORQUE AND TIGHTENING SEQUENCE
14. TESTING OF WELDS TO BE COMPLETED IN ACCORDANCE WITH AS1554.1 BY AN INDEPENDENT THIRD PARTY AS PART OF HAND OVER DOCUMENTATION.
15. CONTRACTOR TO MAKE PROVISIONS FOR ASBESTOS TESTING PRIOR TO UNDERTAKING WORKS ON THE DN900
16. REFER TO ICON WATER STANDARD DRAWING SD-5013-D FOR COLLAR DETAILS

SCALE 1:50

SCALE 1:25

SCALE 1:20

SCALE 1:10

DESIGN

No.	REVISION	DATE	ENG CHECKED	VERIFIED	DESIGN AUTH
B	ICON WATER RESUBMISSION	07.05.2024	A.L.	A.C.	
A	ICON WATER RESUBMISSION	30.11.2023	A.L.	A.C.	



Drawn:	N.BROOKE-TAYLOR	Designed:	M. HOSSEINI
Checked:	A.CHANDRA		
Project Manager:	T. VAN NIEKERK		
Contractor's Drawing No.:	3002750-WS-041		
Icon Water Consequence:			
Icon Water Design Authority:			

WILLIAM HOVELL DRIVE DUPLICATION
ACCESS HATCH
DETAILS SHEET 2

Scale:	AS SHOWN	Date:		Sheet No.:	
Project No.:	AS SHOWN	Tender No.:	DR		
A1		3002750-WS-046		Rev	B