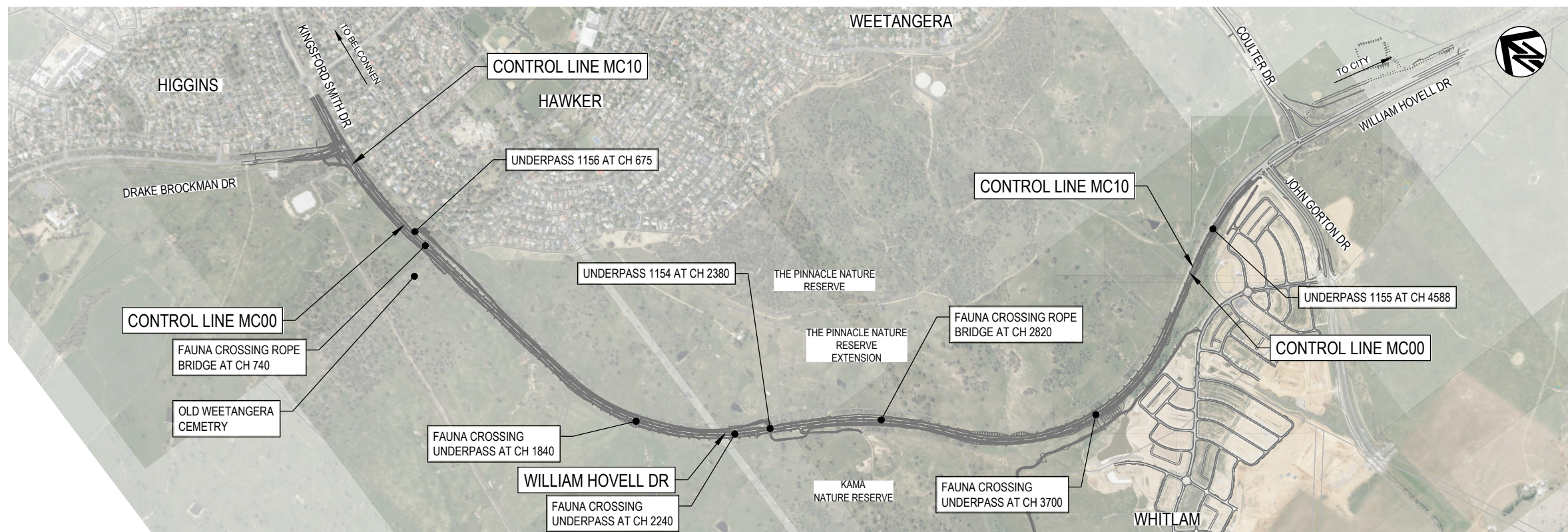
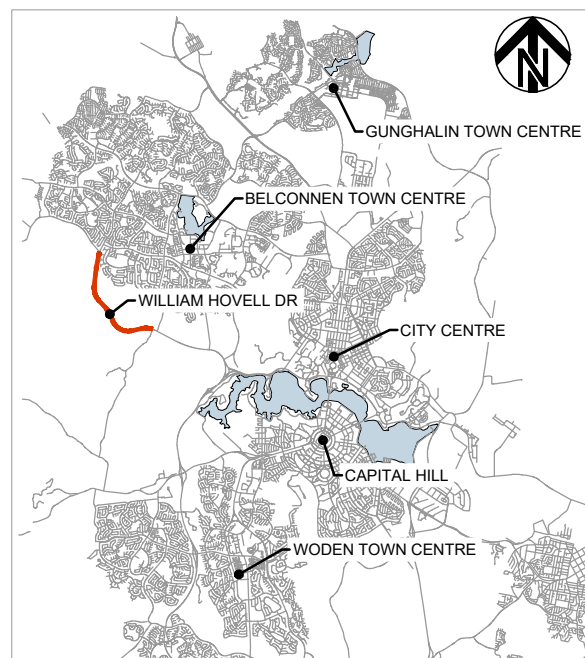


WILLIAM HOVELL DRIVE DUPLICATION ICON WATER PACKAGE



LOCALITY PLAN
SCALE 1:10000



| PACKAGE REFERENCES | | |
|--------------------|---|-----------|
| PACKAGE 01 | INDEX, LOCALITY PLAN, TYPICAL SECTIONS, TYPICAL DETAILS AND MISCELLANEOUS DETAILS | GE |
| PACKAGE 03 | GENERAL ARRANGEMENT PLAN | RD |
| PACKAGE 04 | ROAD ALIGNMENT PLAN | RD |
| PACKAGE 05 | LONGITUDINAL SECTIONS | LS |
| PACKAGE 06 | CROSS SECTIONS | XS |
| PACKAGE 07 | DRAINAGE | DD |
| PACKAGE 08 | ICON WATER | WS |
| PACKAGE 09 | UTILITIES - TELECOMMUNICATIONS, ELECTRICAL | UT |
| PACKAGE 09.1 | DIGITAL, DATA AND TECHNOLOGY SOLUTIONS (DDTS) | DDTS |
| PACKAGE 10 | PAVEMENT AND SUBSOILS | PV |
| PACKAGE 15 | LINES AND SIGNS, TRAFFIC SIGNALS | TCD, TCS |
| PACKAGE 17 | STRUCTURES | ST |
| PACKAGE 20 | CONCEPT EROSION AND SEDIMENT CONTROL | EC |
| PACKAGE 22 | CONCEPT TEMPORARY WORKS PLAN | CS |
| PACKAGE 110 | STREETLIGHTING - RUDDS | |
| PACKAGE 115 | LANDSCAPE MANAGEMENT - ENVIROLINKS | |

| DRAWING NUMBER | DRAWING TITLE |
|----------------|--|
| 3002750-WS-000 | COVER PAGE AND INDEX |
| 3002750-WS-001 | NOTES AND LEGEND |
| 3002750-WS-002 | EXISTING 500 DIA WATER MAIN ROAD CROSSING GENERAL ARRANGEMENT PLAN & LONGITUDINAL SECTION |
| 3002750-WS-003 | EXISTING 900 DIA WATER MAIN ROAD CROSSING GENERAL ARRANGEMENT PLAN & LONGITUDINAL SECTION |
| 3002750-WS-004 | EXISTING 100 DIA WATER MAIN ROAD CROSSING GENERAL ARRANGEMENT PLAN |
| 3002750-WS-020 | PROPOSED DN225 WATER MAIN GENERAL ARRANGEMENT & LONGITUDINAL SECTION |
| 3002750-WS-021 | PROPOSED DN225 WATER MAIN, LONGITUDINAL SECTION (cont) DN225 AND DN300 WATER MAIN CROSS SECTIONS |
| 3002750-WS-022 | PROPOSED DN225 WATER MAIN EXTENSION GENERAL ARRANGEMENT & LONGITUDINAL SECTION |
| 3002750-WS-023 | PROPOSED DN300 AND DN100 WATER MAIN GENERAL ARRANGEMENT & LONGITUDINAL SECTION |
| 3002750-WS-025 | PROPOSED DN600 WATER MAIN GENERAL ARRANGEMENT, LONGITUDINAL SECTION & CROSS SECTION |
| 3002750-WS-030 | TYPICAL REFLUX VALVE INSTALLATION DETAILS SHEET 1 |
| 3002750-WS-031 | TYPICAL REFLUX VALVE INSTALLATION DETAILS SHEET 2 |
| 3002750-WS-032 | TYPICAL REFLUX VALVE INSTALLATION DETAILS SHEET 3 |
| 3002750-WS-033 | TYPICAL THRUST BLOCK AND REINFORCEMENT DETAILS |
| 3002750-WS-034 | TYPICAL BORED THRUST BLOCK AND REINFORCEMENT DETAILS |

DESIGN

| No. | REVISION | DATE | ENG CHECKED | VERIFIED | DESIGN AUTH |
|-----|-------------------------|------------|-------------|----------|-------------|
| C | ICON WATER RESUBMISSION | 07.05.2024 | A.L. | A.C. | |
| B | ICON WATER RESUBMISSION | 30.11.2023 | A.L. | A.C. | |
| A | ISSUE FOR APPROVAL | 09.11.2022 | A.L. | A.C. | |

ACT
Government
Transport Canberra and
City Services

SMC
Member of the Surbana Jurong Group
© ABN 47 065 475 149
SUITE 2, LEVEL 1, 243 NORTHBOURNE AVENUE
LYNEHAM ACT 2602 AUSTRALIA

| | |
|---|-----------------------|
| Drawn: N.BROOKE-TAYLOR | Designed: M. HOSSEINI |
| Checked: A.CHANDRA | |
| Project Manager: T. VAN NIEKERK | |
| Contractor's Drawing No.: 3002750-WS-CP | |
| Icon Water Concurrred: | |
| Icon Water Design Authority: | |

WILLIAM HOVELL DRIVE DUPLICATION
COVER PAGE AND INDEX

| | | |
|-----------------------|-------------|-----------------------|
| Scale: AS SHOWN | Date: DR | Sheet No.: |
| Project No.: AS SHOWN | Tender No.: | |
| A1 | | 3002750-WS-000 |
| | Rev | C |