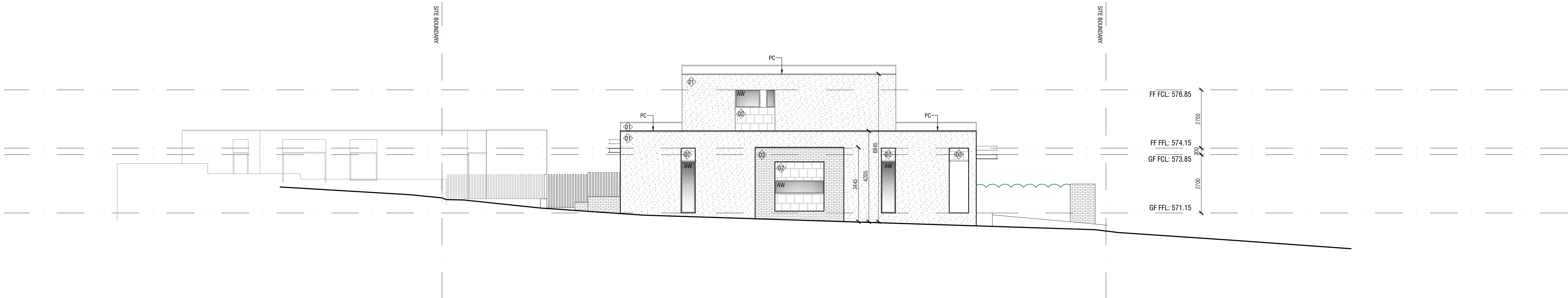
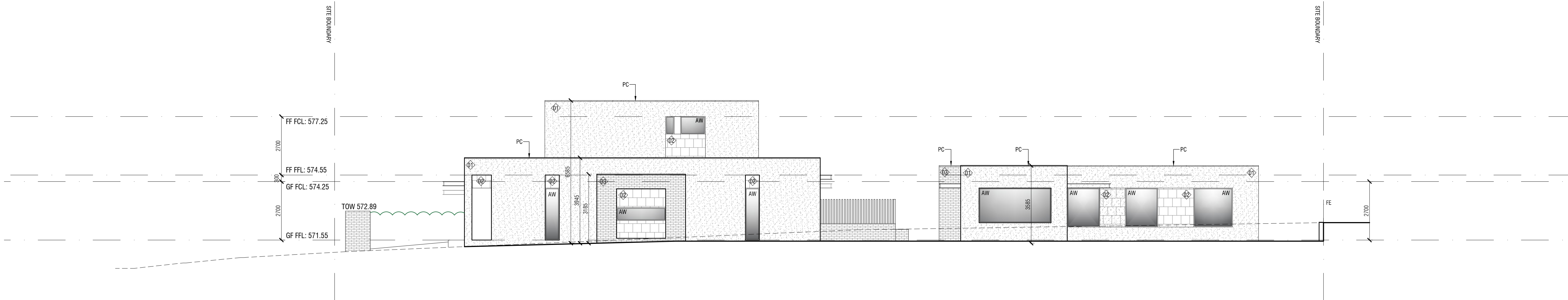


EAST (HUTCHINS STREET) ELEVATION



SOUTH (BENTHAM STREET) ELEVATION



NORTH ELEVATION

WALL CODES KEY

- 250mm BRICK VENEER WALL, TIMBER FRAME WITH R2.5 BULK INSULATION AND SIGALATION, TYROLSEAN RENDERED FOR PAINT FINISH, COLOUR - OFF-WHITE
- TIMBER FRAME WITH R2.5 BULK INSULATION AND SIGALATION, BASALT CLADDING
- 250mm BRICK VENEER WALL, TIMBER FRAME WITH R2.5 BULK INSULATION AND SIGALATION, FACE BRICK, RECLAIMED CANBERRA RED BRICK
- TIMBER FRAMED WALL WITH R2.5 BULK INSULATION AND SIGALATION, 50mm STYRENE FOR ACRYLIC RENDER, COLOUR - MONUMENT

PLANS / ELEVATIONS KEY

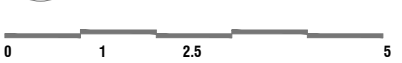
- AWN ALUMINIUM FRAMED WINDOW / DOOR
- ROOF STEEL FRAMED AWNING WITH TRANSPARENT TYROLSEAN RENDERED FOR PAINT FINISH, COLOUR - OFF-WHITE
- BR ENTRY WALL WITH UNIT NUMBER AND LETTERBOX - REFER EXTERNAL WORKS PLAN
- BT METAL BATTENS, COLOUR - DULUX MONUMENT
- C ALUMINIUM CLADDING TO MATCH WINDOW FRAME FINISH
- CL CLOTHESLINE
- FE TIMBER BOUNDARY FENCE, 1.8m HIGH
- FGL FINISHED GROUND LINE
- G EAVES GUTTER - 100mm HALF ROUND, COLOUR - DULUX MONUMENT
- GD GARAGE DOOR
- GT METALWORK GATE, COLOUR - DULUX

NGL

- NATURAL GROUND LINE
- PC PLANTERBOX - REFER EXTERNAL WORKS PLAN
- P FABRICATED STEEL PERGOLA STRUCTURE, COLOUR - SATIN BLACK
- PC PARAPET CAPPING, COLOUR - MONUMENT
- R1 TIMBER FRAMED ROOF TRUSS WITH TRIMDECK ROOF SHEETING AND ANTICON, ROOF SHEET COLOUR - DULUX MONUMENT
- RT STONEWORK RETAINING WALL
- SS ETERNAL BASEMENT EGRESS STAIR
- ST MONUMENT

EXTERNAL WORKS KEY

- BR ENTRY WALL WITH UNIT NUMBER AND LETTERBOX - REFER EXTERNAL WORKS PLAN
- FE TIMBER BOUNDARY FENCE, 1.8m HIGH
- FGL FINISHED GROUND LINE
- GT METALWORK GATE, COLOUR - SATIN BLACK
- MR METAL RAILING FOR STAIRS TO BASEMENT
- NGL NATURAL GROUND LINE
- PB1 RECYCLED RED BRICK PLANTERBOX
- P FABRICATED STEEL PERGOLA STRUCTURE, COLOUR - DULUX MONUMENT
- RT STONEWORK RETAINING WALL
- ST ETERNAL BASEMENT EGRESS STAIR



YARRALUMLA TOWNHOUSES

BLOCK 19 SECTION 64
YARRALUMLA
1912

ELEVATIONS

1:200 @ A1
22 JUNE 2017
DA201



Thursdays
Architecture

PO Box 3673
Manuka ACT 2603
ThursdaysArchitecture.com.au
ACT Registration No. 2289
NSW Registration No. 9528