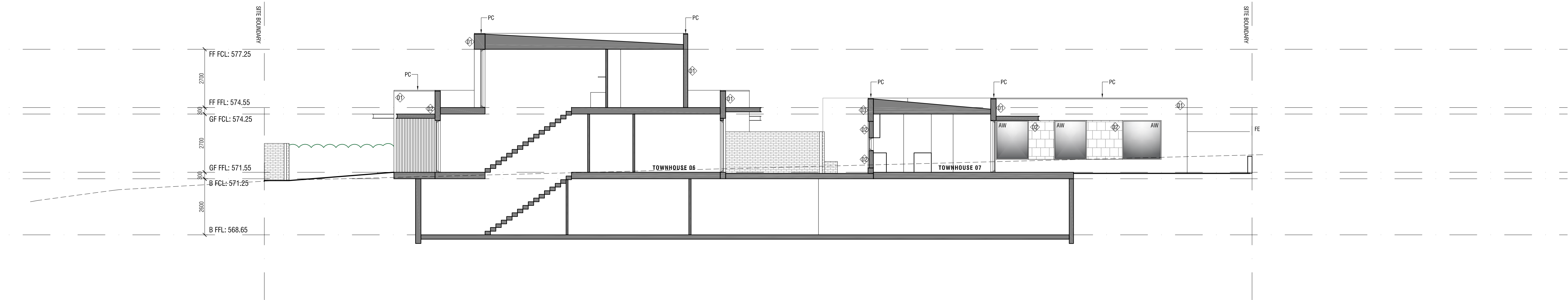


SECTION 01



SECTION 02

WALL CODES KEY

- 250mm BRICK VENEER WALL, TIMBER FRAME WITH R2.5 BULK INSULATION AND SISALATION, TYROLEAN RENDERED FOR PAINT FINISH, COLOUR - OFF-WHITE
- TIMBER FRAME WITH R2.5 BULK INSULATION AND SISALATION, BASALT CLADDING.
- 250mm BRICK VENEER WALL, TIMBER FRAME WITH R2.5 BULK INSULATION AND SISALATION, FACE BRICK, RECLAIMED CANBERRA RED BRICK
- TIMBER FRAMED WALL WITH R2.5 BULK INSULATION AND SISALATION, 50mm STYRENE EPS INSULATION, MONUMENT

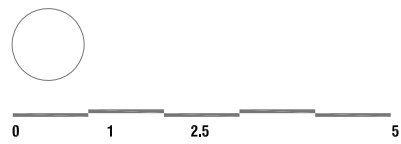
PLANS / ELEVATIONS KEY

- ALUMINIUM FRAMED WINDOW / DOOR
- ENTRY WALL WITH UNIT NUMBER AND LETTERBOX - REFER EXTERNAL WORKS PLAN
- METAL BATENS, COLOUR - DULUX MONUMENT
- ALUMINIUM CLADDING TO MATCH WINDOW FRAME FINISH
- TIMBER BOUNDARY FENCE, 1.8m HIGH
- FINISHED GROUND LINE
- EAVES GUTTER - 100mm HALF ROUND, COLOUR - DULUX MONUMENT
- GARAGE DOOR
- METALWORK GATE, COLOUR - DULUX MONUMENT
- METAL RAILING FOR STAIRS TO BASEMENT
- NATURAL GROUND LINE

- COLOUR - SATIN BLACK
- PARAPET CAPPING, COLOUR - MONUMENT
- TIMBER FRAMED ROOF TRUSS WITH TRIMDECK
- ROOF SHEETING AND ANTICORN, ROOF SHEET
- COLOUR - DULUX MONUMENT
- STONEWORK RETAINING WALL
- ETERNAL BASEMENT EGRESS STAIR
- METAL FRAMED SUNSHADE, COLOUR - DULUX MONUMENT

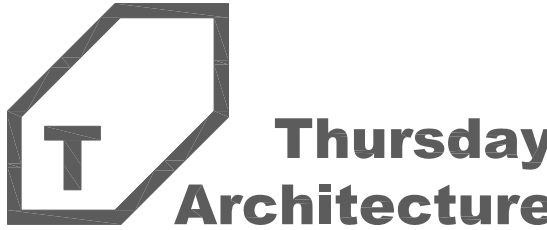
EXTERNAL WORKS KEY

- ENTRY WALL WITH UNIT NUMBER AND LETTERBOX - REFER EXTERNAL WORKS PLAN
- TIMBER BOUNDARY FENCE, 1.8m HIGH
- FINISHED GROUND LINE
- METALWORK GATE, COLOUR - SATIN BLACK
- METAL RAILING FOR STAIRS TO BASEMENT
- NATURAL GROUND LINE
- RECYCLED RED BRICK PLANTERBOX
- FABRICATED STEEL PERGOLA STRUCTURE, COLOUR - DULUX MONUMENT
- STONEWORK RETAINING WALL
- ETERNAL BASEMENT EGRESS STAIR



**YARRALUMLA TOWNHOUSES**  
BLOCK 19 SECTION 64  
YARRALUMLA  
1912

**SECTIONS**  
1:200 @ A1  
22 JUNE 2017  
**DA301**



PO Box 3673  
Manuka ACT 2603  
ThursdaysArchitecture.com.au  
ACT Registration No. 2289  
NSW Registration No. 3508