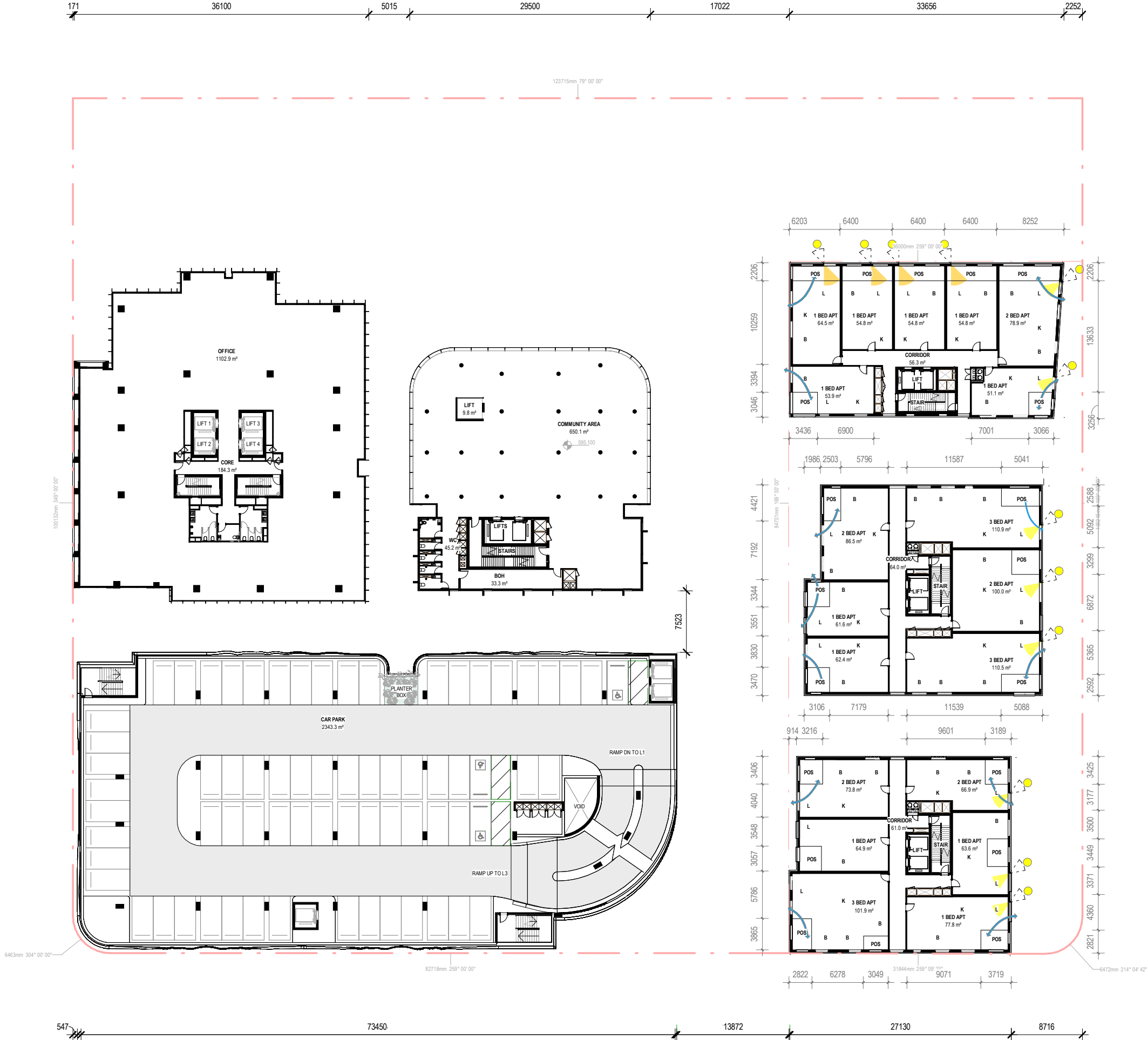


Woden Village DA RFI – List of Changes:

- A1. Driveways and verge crossings updated to match the Waste Management Ground Floor Plan.
- A2. Ground floor waste enclosures and waste storage updated.
- A3. Canopy above the waste collection zone removed.
- A4. Carpark link design revised.
- A5. Residential building link height adjusted.
- A6. Apartment layouts revised to improve functionality.
- A7. Development Schedule for the Community Building revised.
- A9. Northern Residential Tower upper levels revised (façade, internal planning, and apartment mix updated).
- A10. Carpark roof landscape updated.
- A11. Roof plant area setbacks updated, and solar panel orientation adjusted.
- A12. Carpark pedestrian link updated, services relocated.
- A13. Dwelling typology plans provided.
- A14. Floor-to-ceiling heights added.
- A15. Residential corridor widths adjusted to meet the minimum requirement of 1540 mm.
- A16. Ground floor amenity space converted to a residential lobby.
- A17. Privacy screen details provided.
- A18. Additional elevations added.

21232
40427
6200
36289



LEGEND

- RECEIVES NATURAL CROSS VENTILATION FROM TWO FACADES WITH DIFFERENT ORIENTATIONS.
- RECEIVES MINIMUM 3 HOURS SUNLIGHT BETWEEN 9AM - 12PM
- RECEIVES MINIMUM 3 HOURS SUNLIGHT BETWEEN 12PM - 3PM

