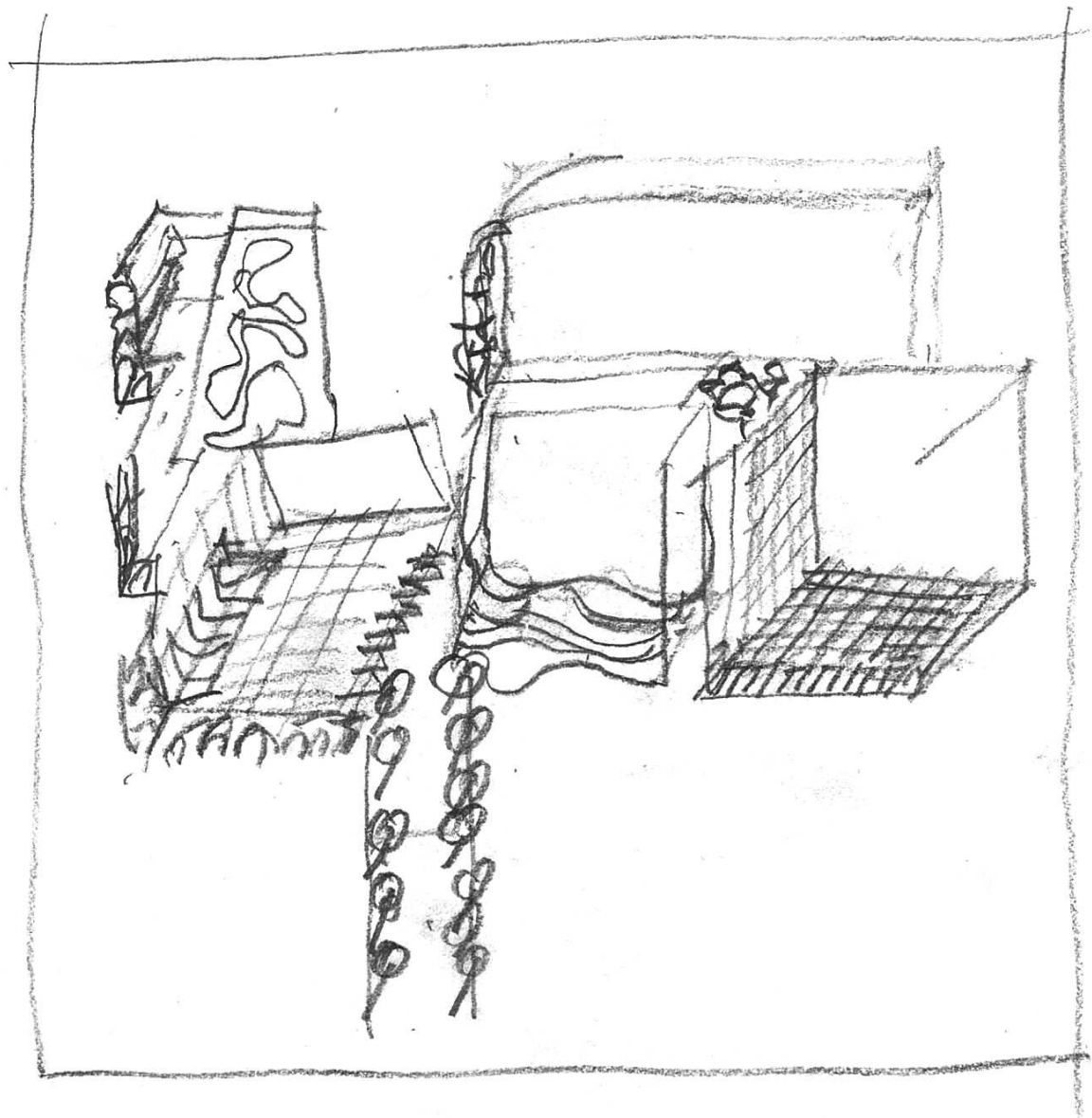


# WODEN VILLAGE

## BLOCK 4 SECTION 7, PHILLIP

24031

16/03/2026



SHEET	SHEET NAME	REVISION	SHEET	SHEET NAME	REVISION
DA0001	COVER SHEET	2	DA7001	3D VISUALISATION	2
DA0101	LOCALITY PLAN	1	DA7002	3D VISUALISATION	2
DA0102	SURVEY	1	DA9001	SHADOW DIAGRAMS - 21 JUNE 9AM	2
DA0103	EXISTING AND SITE ANALYSIS PLAN	1	DA9002	SHADOW DIAGRAMS - 21 JUNE 10AM	2
DA0104	DEMOLITION PLAN	1	DA9003	SHADOW DIAGRAMS - 21 JUNE 11AM	2
DA0105	LAND USE PLAN	1	DA9004	SHADOW DIAGRAMS - 21 JUNE 12PM	2
DA0106	PROPOSED SUBDIVISION PLAN	1	DA9005	SHADOW DIAGRAMS - 21 JUNE 1PM	2
DA0107	BLOCK DETAILS PLAN	1	DA9006	SHADOW DIAGRAMS - 21 JUNE 2PM	2
DA0108	CONCEPT MASTERPLAN	2	DA9007	SHADOW DIAGRAMS - 21 JUNE 3PM	2
DA0109	PROPOSED SITE PLAN	2	DA9008	SHADOW DIAGRAMS - 22 DEC 9AM	2
DA0110	ESTATE DEVELOPMENT PLAN	2	DA9009	SHADOW DIAGRAMS - 22 DEC 12PM	2
DA0111	PROPOSED STAGING PLAN	2	DA9010	SHADOW DIAGRAMS - 22 DEC 3PM	2
DA0112	PROPOSED PARKING PLAN	2	DA9696	PUBLIC NOTIFICATION AND SOLAR PLAN - BASEMENT 4	2
DA0113	ACTIVE TRAVEL PLAN	2	DA9697	PUBLIC NOTIFICATION AND SOLAR PLAN - BASEMENT 3	2
DA1096	FLOOR PLAN - BASEMENT 4	1	DA9698	PUBLIC NOTIFICATION AND SOLAR PLAN - BASEMENT 2	2
DA1097	FLOOR PLAN - BASEMENT 3	1	DA9699	PUBLIC NOTIFICATION AND SOLAR PLAN - BASEMENT 1	2
DA1098	FLOOR PLAN - BASEMENT 2	1	DA9700	PUBLIC NOTIFICATION AND SOLAR PLAN - GROUND FLOOR	2
DA1099	FLOOR PLAN - BASEMENT 1	1	DA9701	PUBLIC NOTIFICATION AND SOLAR PLAN - LEVEL 1	2
DA1100	FLOOR PLAN - GROUND LEVEL	2	DA9702	PUBLIC NOTIFICATION AND SOLAR PLAN - LEVEL 2	2
DA1101	FLOOR PLAN - OVERALL - LEVEL 1	1	DA9703	PUBLIC NOTIFICATION AND SOLAR PLAN - LEVEL 3	2
DA1102	FLOOR PLAN - OVERALL - LEVEL 2	2	DA9704	PUBLIC NOTIFICATION AND SOLAR PLAN - LEVEL 4	2
DA1103	FLOOR PLAN - OVERALL - LEVEL 3	2	DA9705	PUBLIC NOTIFICATION AND SOLAR PLAN - LEVEL 5	2
DA1104	FLOOR PLAN - OVERALL - LEVEL 4	2	DA9706	PUBLIC NOTIFICATION AND SOLAR PLAN - LEVEL 6	2
DA1105	FLOOR PLAN - OVERALL - LEVEL 5	2	DA9707	PUBLIC NOTIFICATION AND SOLAR PLAN - LEVEL 7	2
DA1106	FLOOR PLAN - OVERALL - LEVEL 6	2	DA9708	PUBLIC NOTIFICATION AND SOLAR PLAN - LEVEL 8	2
DA1107	FLOOR PLAN - OVERALL - LEVEL 7	2	DA9709	PUBLIC NOTIFICATION AND SOLAR PLAN - LEVEL 9	2
DA1108	FLOOR PLAN - OVERALL - LEVEL 8	2	DA9710	PUBLIC NOTIFICATION AND SOLAR PLAN - LEVEL 10	2
DA1109	FLOOR PLAN - OVERALL - LEVEL 9	2	DA9711	PUBLIC NOTIFICATION AND SOLAR PLAN - LEVEL 11	2
DA1110	FLOOR PLAN - OVERALL - LEVEL 10	2	DA9712	PUBLIC NOTIFICATION AND SOLAR PLAN - LEVEL 12	2
DA1111	FLOOR PLAN - OVERALL - LEVEL 11	2	DA9713	PUBLIC NOTIFICATION AND SOLAR PLAN - LEVEL 13	2
DA1112	FLOOR PLAN - OVERALL - LEVEL 12	2	DA9714	PUBLIC NOTIFICATION AND SOLAR PLAN - LEVEL 14	2
DA1113	FLOOR PLAN - OVERALL - LEVEL 13	2	DA9715	PUBLIC NOTIFICATION AND SOLAR PLAN - LEVEL 15	2
DA1114	FLOOR PLAN - OVERALL - LEVEL 14	2	DA9716	PUBLIC NOTIFICATION AND SOLAR PLAN - LEVEL 16	2
DA1115	FLOOR PLAN - OVERALL - LEVEL 15	2	DA9717	PUBLIC NOTIFICATION AND SOLAR PLAN - ROOF	2
DA1116	FLOOR PLAN - OVERALL - LEVEL 16	2	DA9801	MATERIAL BOARD - EXTERNAL FINISHES - MULTI-UNIT DWELLINGS	2
DA1117	ROOF PLAN - OVERALL	2	DA9802	MATERIAL BOARD - EXTERNAL FINISHES - OFFICE & COMMUNITY HUB	2
DA2001	STREETSCAPE ELEVATION - MATILDA STREET AND BUILDING NORTH ELEVATION	2	DA9803	MATERIAL BOARD - EXTERNAL FINISHES - CARPARK	2
DA2002	STREETSCAPE ELEVATION - CALLAM STREET AND BUILDING EAST ELEVATION	2	DA9901	DEVELOPMENT SCHEDULE	2
DA2003	STREETSCAPE ELEVATION - BOWES STEET AND BUILDING SOUTH ELEVATION	2	DA9902	DEVELOPMENT SCHEDULE - GFA DIAGRAMS	2
DA2004	STREETSCAPE ELEVATION - BOWES STREET AND BUILDING WEST ELEVATION	2	DA9903	DEVELOPMENT SCHEDULE - GFA DIAGRAMS	2
DA3001	SECTION A-A	2			
DA3002	SECTION B-B	2			
DA3003	SECTION C-C	2			
DA3004	SECTION D-D	2			
DA3005	SECTION E-E	2			
DA5000	AFFORDABLE HOUSING APARTMENT TYPES	2			
DA5001	AFFORDABLE HOUSING APARTMENT TYPES	2			
DA5003	AFFORDABLE HOUSING APARTMENT TYPES	2			
DA5004	COMMUNITY HOUSING APARTMENT TYPES	2			
DA5005	COMMUNITY HOUSING APARTMENT TYPES	2			
DA6000	TYPICAL APARTMENT PLAN - 1 BEDROOM	2			
DA6001	TYPICAL APARTMENT PLAN - 1 BEDROOM	2			
DA6002	TYPICAL APARTMENT PLAN - 1 BEDROOM	2			
DA6003	TYPICAL APARTMENT PLAN - 1 BEDROOM	2			
DA6004	TYPICAL APARTMENT PLAN - 1 BEDROOM	2			
DA6005	TYPICAL APARTMENT PLAN - 1 BEDROOM	2			
DA6006	TYPICAL APARTMENT PLAN - 1 BEDROOM	2			
DA6007	TYPICAL APARTMENT PLAN - 1 BEDROOM	2			
DA6008	TYPICAL APARTMENT PLAN - 1 BEDROOM	2			
DA6009	TYPICAL APARTMENT PLAN - 2 BEDROOM	2			
DA6010	TYPICAL APARTMENT PLAN - 2 BEDROOM	2			
DA6011	TYPICAL APARTMENT PLAN - 2 BEDROOM	2			
DA6012	TYPICAL APARTMENT PLAN - 2 BEDROOM	2			
DA6013	TYPICAL APARTMENT PLAN - 2 BEDROOM	2			
DA6014	TYPICAL APARTMENT PLAN - 2 BEDROOM	2			
DA6015	TYPICAL APARTMENT PLAN - 2 BEDROOM	2			
DA6016	TYPICAL APARTMENT PLAN - 3 BEDROOM	2			
DA6017	TYPICAL APARTMENT PLAN - 3 BEDROOM	2			
DA6018	TYPICAL APARTMENT PLAN - 3 BEDROOM	2			
DA6019	TYPICAL APARTMENT PLAN - 3 BEDROOM	2			
DA6020	TYPICAL APARTMENT PLAN - 3 BEDROOM	2			
DA6021	TYPICAL APARTMENT PLAN - 3 BEDROOM	2			
DA6022	TYPICAL APARTMENT PLAN - 3 BEDROOM	2			
DA6023	TYPICAL APARTMENT PLAN - 3 BEDROOM	2			
DA6024	TYPICAL PRIVACY SCREEN DETAIL	1			
DA7000	3D VISUALISATION	2			

Woden Village DA RFI – List of Changes:

- A1. Driveways and verge crossings updated to match the Waste Management Ground Floor Plan.
- A2. Ground floor waste enclosures and waste storage updated.
- A3. Canopy above the waste collection zone removed.
- A4. Carpark link design revised.
- A5. Residential building link height adjusted.
- A6. Apartment layouts revised to improve functionality.
- A7. Development Schedule for the Community Building revised.
- A9. Northern Residential Tower upper levels revised (façade, internal planning, and apartment mix updated).
- A10. Carpark roof landscape updated.
- A11. Roof plant area setbacks updated, and solar panel orientation adjusted.
- A12. Carpark pedestrian link updated, services relocated.
- A13. Dwelling typology plans provided.
- A14. Floor-to-ceiling heights added.
- A15. Residential corridor widths adjusted to meet the minimum requirement of 1540 mm.
- A16. Ground floor amenity space converted to a residential lobby.
- A17. Privacy screen details provided.
- A18. Additional elevations added.