

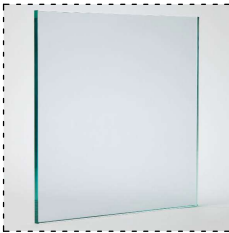
KEYPLAN

NOTES:

GLAZING PROPERTIES:

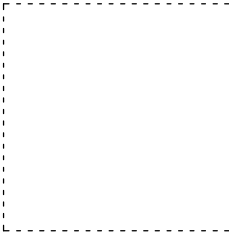
HIGH PERFORMANCE DOUBLE GLAZING WITH 6MM CRYSTAL CLEAR TOUGHENED (EXTERNAL)/ 12MM AIR WITH BLACK SPACER/ 6MM CLEAR TOUGHENED (INTERNAL).

EXTERNAL REFLECTANCE: 16-20% INTERNAL REFLECTANCE: 13-14% VISUAL LIGHT TRANSMISSION (VLT): 30-45% INSULATION VALUES AND SHADING COEFFICIENT: AS DETERMINED IN CONJUNCTION WITH THE SERVICES ENGINEER AND ENERGY RATING.



GL 01 - DOUBLE GLAZED GLASS

COLOUR CLEAR



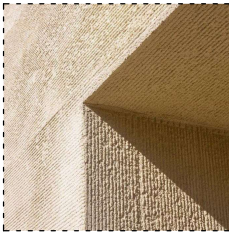
MET 01 - METAL CLADDING DULUX

COLOUR PALE EUCALYPT



MET 02 - METAL CLADDING DULUX

COLOUR COPPER PEARL



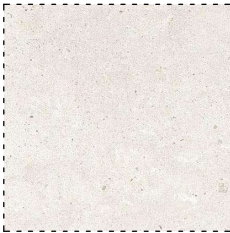
FC 01 - TEXTURED STONE CLADDING

COLOUR WARM SANDSTONE



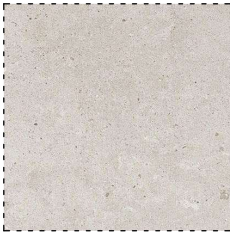
FC 02 - BRICK SLIPS OR SIMILAR

COLOUR ANTICO CASALE OCRA



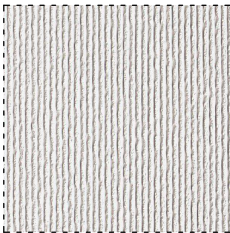
CON 01 - CONCRETE FINISH

COLOUR BRIGHTON LITE



CON 02 - CONCRETE LOOK CLADDING EQUITONE

COLOUR WARM



CON 03 - RECKLI TEXTURED CONCRETE

COLOUR BRIGHTON LITE



MET 03 - METAL PALISADE

COLOUR LIGHT GREY



MET 04 - METAL CLADDING

COLOUR STAINLESS STEEL